

Supplementary Material

QUANTITATIVE PROTEOMICS REVEALS NOVEL THERAPEUTIC AND DIAGNOSTIC MARKERS IN HYPERTENSION

Vittoria Matafora^{1,2}, Laura Zagato³, Mara Ferrandi³, Isabella Molinari³, Gianpaolo Zerbini⁴,
Nunzia Casamassima³, Chiara Lanzani³, Simona Delli Carpini³, Francesco Trepiccione², Paolo
Manunta^{3,5}, Angela Bachi^{1*} and Giovambattista Capasso²

*Corresponding author: Angela Bachi, IFOM-FIRC Institute of Molecular Oncology, Via
Adamello 16, 20139 Milano, Italy. Email: angela.bachi@ifom.eu, Phone: +3902574303873, Fax:
+3902.

Supplementary Table 1. Total proteins identified by Maxquant analysis. For each protein group identified, in the table are reported protein name, gene name, Uniprot ID, molecular weight, posterior error probability (PEP) and relative averaged LFQ intensities for each group analysed C, SR and SS as reported in the row.

Protein Names	Gene Names	Uniprot	Mol. Weight [kDa]	PEP	Intensity	average LFQ intensity C	average LFQ intensity SR	average LFQ intensity SS
1F5 antigen	CD59	E9PR17	14.529	0.00E+00	4.81E+10	1.57E+08	1.75E+08	1.49E+08
Ig kappa chain C region	IGKC	P01834	11.609	0.00E+00	4.54E+10	1.97E+08	1.12E+08	1.05E+08
Beta-trace protein	PDS	F8W7I2	24.39	0.00E+00	4.15E+10	1.93E+08	1.05E+08	1.34E+08
Alpha-2-thiol proteinase inhibitor	BDK	P01042-2	47.883	0.00E+00	3.75E+10	1.09E+08	1.28E+08	1.21E+08
Bone sialoprotein 1	BNSP	P10451	35.422	0.00E+00	2.28E+10	6.50E+07	9.43E+07	7.68E+07
Zinc-alpha-2-glycoprotein	AZGP1	P25311	34.258	0.00E+00	2.09E+10	1.20E+08	3.39E+07	1.01E+08
Ig gamma-2 chain C region	IGHG2	P01859	35.9	0.00E+00	1.67E+10	7.50E+07	5.20E+07	7.25E+07
Basement membrane-specific heparan sulfate proteoglycan core protein	HSPG2	P98160	468.83	0.00E+00	1.53E+10	5.57E+07	4.44E+07	4.59E+07
Activation peptide fragment 1	F2	P00734	70.036	0.00E+00	1.52E+10	5.09E+07	5.71E+07	4.91E+07
Ig lambda-2 chain C regions	IGLC2	P0CG05	11.293	0.00E+00	1.22E+10	5.87E+07	3.85E+07	4.41E+07
Beta-1 metal-binding globulin	PRO1400	P02787	77.063	0.00E+00	1.05E+10	3.96E+07	3.63E+07	4.62E+07
1,4-alpha-D-glucan glucanohydrolase	AMY2A	P04746	57.706	0.00E+00	9.22E+09	3.70E+07	3.33E+07	2.56E+07
CD44 antigen	CD44	P16070	81.537	1.52E-153	7.90E+09	1.88E+07	2.23E+07	2.50E+07
Alpha-1-acid glycoprotein 1	AGP1	P02763	23.511	0.00E+00	7.85E+09	4.41E+07	2.44E+07	3.02E+07
Hepatocellular carcinoma-associated protein TB6	PIGR	P01833	83.283	0.00E+00	7.76E+09	3.21E+07	2.91E+07	2.12E+07
Ig gamma-1 chain C region	IGHG1	P01857	36.105	0.00E+00	6.86E+09	3.05E+07	1.34E+07	1.54E+07
Epidermal growth factor	EGF	P01133	133.99	0.00E+00	6.06E+09	1.73E+07	2.53E+07	2.75E+07
Epididymal secretory protein E4	HE4	Q14508	12.993	0.00E+00	6.04E+09	1.07E+07	2.53E+07	2.87E+07
Ig alpha-1 chain C region	IGHA1	P01876	37.654	0.00E+00	5.49E+09	2.42E+07	2.46E+07	1.71E+07
HP-RNase	RIB1	P07998	17.644	0.00E+00	4.85E+09	1.77E+07	1.89E+07	1.81E+07
Glycoprotein GP36b	C5orf8	Q12907	40.228	0.00E+00	4.61E+09	2.19E+07	1.60E+07	1.22E+07
Pepsinogen 5, group I (Pepsinogen A)	hCG_1730399	F8WAB4	41.976	3.78E-157	4.59E+09	1.33E+07	1.09E+07	9.12E+06
Eosinophil-derived neurotoxin	EDN	P10153	18.354	0.00E+00	4.56E+09	1.54E+07	1.36E+07	1.13E+07
Alpha-2-HS-glycoprotein	AHSG	F5H0Q5	46.6	0.00E+00	4.50E+09	1.93E+07	8.67E+06	1.42E+07
Ig kappa chain V-III region SIE		P01620	11.775	5.16E-248	4.17E+09	1.91E+07	1.40E+07	1.16E+07
Kallikrein-1	KLK1	P06870	28.889	3.10E-220	3.73E+09	1.25E+07	9.45E+06	1.31E+07

Anti-neoplastic urinary protein	ARS	P55000	11.186	1.09E-172	3.69E+09	6.68E+06	6.89E+06	1.19E+07
Ig kappa chain V-II region GM607		P06309	12.664	3.91E-232	3.60E+09	1.42E+07	8.11E+06	1.02E+07
Peptidoglycan recognition protein 1	PGLYRP	O75594	21.731	0.00E+00	3.41E+09	1.38E+07	1.17E+07	7.11E+06
Alpha-1 protease inhibitor	AAT	P01009	46.736	0.00E+00	3.30E+09	1.30E+07	9.89E+06	8.74E+06
EGF-containing fibulin-like extracellular matrix protein 1	EFEMP1	Q12805	54.64	0.00E+00	3.00E+09	1.09E+07	8.58E+06	1.05E+07
460 kDa receptor	CUBN	O60494	398.73	0.00E+00	3.00E+09	9.11E+06	1.42E+07	1.03E+07
IGFBP-rP1	IGFBP7	Q16270	29.13	0.00E+00	2.97E+09	8.00E+06	8.89E+06	9.30E+06
Aging-associated gene 4 protein	AAG4	P10909-2	57.832	0.00E+00	2.91E+09	8.13E+06	1.17E+07	9.59E+06
Protein slit-like 2	SLITL2	Q6EMK4	71.712	0.00E+00	2.90E+09	7.17E+06	8.54E+06	9.45E+06
Actin-depolymerizing factor	GSN	P06396	85.696	0.00E+00	2.87E+09	1.56E+07	7.64E+06	8.14E+06
Extracellular sulfatase Sulf-2	KIAA1247	Q8IWU5	100.45	3.81E-31	2.86E+09	7.75E+06	7.71E+06	5.82E+06
Alpha-1-antichymotrypsin	AACT	G3V5I3	50.598	0.00E+00	2.86E+09	1.27E+07	8.00E+06	9.99E+06
Glycoprotein 330	LRP2	P98164	521.95	0.00E+00	2.85E+09	9.43E+06	1.24E+07	9.51E+06
70 kDa lysosomal alpha-glucosidase	GAA	P10253	105.32	0.00E+00	2.84E+09	8.81E+06	1.27E+07	1.05E+07
Leucine-rich alpha-2-glycoprotein	LRG	P02750	38.177	0.00E+00	2.70E+09	1.15E+07	4.30E+06	8.98E+06
Spasmolysin	SML1	Q03403	14.284	6.38E-268	2.53E+09	6.98E+06	8.85E+06	1.64E+07
Protein shisa-5	PSEC0133	Q8N114	25.582	1.29E-190	2.48E+09	7.85E+06	9.68E+06	8.93E+06
Alpha-1-acid glycoprotein 2	AGP2	P19652	23.602	1.03E-279	2.41E+09	1.07E+07	6.78E+06	1.39E+07
Putative uncharacterized protein CDH13	CDH13	C9JRI6	78.301	0.00E+00	2.36E+09	7.27E+06	6.12E+06	6.32E+06
Acrogranin	GRN	P28799	63.544	0.00E+00	2.23E+09	7.57E+06	1.25E+07	1.59E+07
Fibrillin-1	FBN	P35555	312.24	0.00E+00	2.20E+09	6.80E+06	7.11E+06	9.74E+06
Monocyte differentiation antigen CD14	CD14	P08571	40.076	0.00E+00	2.10E+09	9.89E+06	4.71E+06	4.54E+06
Vitelline membrane outer layer protein 1 homolog	UNQ6350/PR O21055	Q7Z5L0	21.534	1.87E-221	2.06E+09	5.85E+06	1.23E+07	7.73E+06
AXL oncogene	AXL	P30530	98.335	4.85E-142	2.01E+09	6.22E+06	6.32E+06	7.07E+06
cDNA FLJ58826, highly similar to Plasma protease C1 inhibitor	C1IN	E9PGN7	59.491	7.95E-298	1.96E+09	6.12E+06	6.97E+06	6.42E+06
Mannan-binding lectin serine protease 2	MASP2	O00187	75.702	0.00E+00	1.96E+09	1.02E+07	6.24E+06	5.22E+06
CD300 antigen-like family member G	CD300LG	Q6UXG3	36.06	0.00E+00	1.95E+09	5.56E+06	6.81E+06	8.42E+06
Alpha-1-B glycoprotein	A1BG	P04217	54.253	6.27E-281	1.93E+09	8.30E+06	5.70E+06	8.24E+06

SH3 domain-binding glutamic acid-rich-like protein 3	P1725	Q9H299	10.438	1.45E-130	1.88E+09	6.77E+06	6.22E+06	5.63E+06
Activated protein C receptor	EPCR	Q9UNN8	26.671	2.14E-282	1.85E+09	6.61E+06	6.11E+06	7.39E+06
cDNA, FLJ96520, Homo sapiens secreted phosphoprotein 1 (osteopontin, bonesialoprotein I, early T-lymphocyte activation 1) (SPP1), mRNA	hCG_38538	B2RDA1	33.843	0.00E+00	1.82E+09	6.83E+06	9.22E+06	8.21E+06
Endosialin	CD164L1	Q9HCU0	80.858	0.00E+00	1.78E+09	6.38E+06	5.79E+06	5.42E+06
Protein K12	SECTM1	Q8WVN6	27.039	4.14E-109	1.77E+09	8.73E+06	4.83E+06	3.91E+06
Leukocyte-associated immunoglobulin-like receptor 1	CD305	Q6GTX8	31.412	0.00E+00	1.71E+09	4.83E+06	5.96E+06	4.87E+06
Islet cells regeneration factor	PSPS	P05451	18.731	8.18E-136	1.71E+09	7.76E+06	3.07E+06	7.83E+06
Alpha-1 microglycoprotein	AMBP	P02760	159	4.72E+01	1.37E+11	6.09E+08	4.66E+08	5.56E+08
Prostatic acid phosphatase	ACPP	P15309	44.566	2.28E-293	1.70E+09	7.48E+06	6.95E+06	3.89E+06
Beta-defensin 1	BD1	P60022	7.4197	3.95E-190	1.64E+09	5.70E+06	3.15E+06	3.44E+06
CD55 molecule, decay accelerating factor for complement (Cromer blood group)	CD55	B1AP13	49.338	0.00E+00	1.62E+09	5.73E+06	3.41E+06	4.55E+06
Gamma-seminoprotein	APS	P07288	28.741	1.14E-126	1.49E+09	6.34E+06	5.87E+06	3.50E+06
Kringle domain-containing protein HGFL	HGFL	Q96FE7	28.248	3.84E-144	1.47E+09	3.10E+06	4.43E+06	5.68E+06
Clara cell phospholipid-binding protein	CC10	P11684	9.9937	3.25E-151	1.44E+09	4.83E+06	3.79E+06	4.97E+06
Basement membrane autoantigen p105	LGALS3BP	Q08380	65.33	0.00E+00	1.44E+09	4.51E+06	7.02E+06	6.66E+06
Deoxyribonuclease I	DNASE1	P24855	31.433	4.23E-239	1.43E+09	5.05E+06	5.08E+06	5.38E+06
HDC	IGHG3	P01860	41.287	3.55E-201	1.42E+09	1.01E+07	4.33E+06	5.64E+06
ITIH4 protein	ITIH4	B7ZKJ8	103.88	0.00E+00	1.38E+09	7.66E+06	3.99E+06	2.54E+06
Serum-spreading factor	VTN	P04004	54.305	0.00E+00	1.38E+09	4.50E+06	5.37E+06	4.50E+06
Collagen alpha-1(VI) chain	COL6A1	P12109	108.53	0.00E+00	1.32E+09	4.65E+06	4.02E+06	2.79E+06
Plasma retinol-binding protein	PRO2222	P02753	23.01	1.64E-128	1.32E+09	4.06E+06	4.18E+06	4.58E+06
Ig kappa chain V-III region VG		P04433	12.575	2.28E-85	1.32E+09	6.25E+06	3.09E+06	4.47E+06
Haptoglobin	HP	P00738	45.205	0.00E+00	1.26E+09	1.15E+07	2.52E+06	4.90E+06
Cell adhesion molecule 4	CADM4	Q8NFZ8	42.785	0.00E+00	1.17E+09	3.62E+06	4.02E+06	3.59E+06
Endonuclease domain-containing 1 protein	ENDOD1	O94919	55.016	0.00E+00	1.16E+09	4.55E+06	2.80E+06	4.25E+06

Entactin	NID	P14543	136.38	1.14E-121	1.15E+09	5.53E+06	4.14E+06	3.22E+06
Anastellin	FN	P02751	262.62	0.00E+00	1.15E+09	3.41E+06	4.39E+06	4.54E+06
Secreted Ly-6/uPAR-related protein 2	SLURP2	G3XAC2	14.026	2.24E-258	1.06E+09	3.35E+06	3.41E+06	3.10E+06
Alanyl aminopeptidase	ANPEP	P15144	109.54	0.00E+00	1.05E+09	4.60E+06	4.39E+06	2.99E+06
Hepatitis A virus cellular receptor 2	HAVCR2	Q8TDQ0	33.394	3.27E-232	1.04E+09	3.16E+06	3.69E+06	3.16E+06
Activated protein C-binding protein	APOH	P02749	38.298	0.00E+00	9.95E+08	3.23E+06	3.03E+06	2.87E+06
Latent-transforming growth factor beta-binding protein 2	C14orf141	Q14767	195.05	7.52E-197	9.83E+08	2.86E+06	3.86E+06	3.85E+06
Ig lambda chain V-III region LOI		P80748	11.935	4.07E-28	9.67E+08	4.63E+06	2.26E+06	2.11E+06
Beta-1B-glycoprotein	HPX	P02790	51.676	0.00E+00	9.43E+08	4.14E+06	3.20E+06	3.00E+06
Cerebroside sulfate activator protein	GM2A	P17900	20.838	8.73E-115	9.39E+08	4.26E+06	2.21E+06	3.34E+06
Magic roundabout	ROBO4	Q8WZ75	107.46	0.00E+00	9.17E+08	3.92E+06	3.75E+06	2.28E+06
Prosaposin	PSAP	B1AVU8	61.692	2.24E-138	9.12E+08	3.47E+06	4.36E+06	3.86E+06
Cysteine-rich secretory protein 9	CRISP9	Q6UXB8	49.471	6.25E-55	9.04E+08	3.50E+06	1.52E+06	4.23E+06
Attractin	ATRN	O75882	158.54	0.00E+00	8.99E+08	2.93E+06	3.37E+06	3.31E+06
Beta-2-microglobulin	B2M	P61769	13.714	6.84E-28	8.95E+08	4.26E+06	3.47E+06	1.97E+06
C-type lectin domain family 3 member B	CLEC3B	P05452	22.537	0.00E+00	8.84E+08	3.37E+06	2.95E+06	2.50E+06
Immunoglobulin J chain	IGCJ	P01591	18.098	5.54E-158	8.63E+08	3.61E+06	4.10E+06	2.51E+06
Cadherin-1	CDH1	F5GYI6	99.577	0.00E+00	8.62E+08	3.77E+06	2.21E+06	3.42E+06
CCN family member 3	CCN3	P48745	39.162	1.02E-180	8.61E+08	2.95E+06	3.40E+06	4.29E+06
Golgi membrane protein 1	C9orf155	Q8NBJ4	45.333	0.00E+00	8.55E+08	2.66E+06	3.26E+06	2.41E+06
CD27 antigen	CD27	P26842	29.137	2.87E-176	8.34E+08	3.11E+06	2.88E+06	3.36E+06
CD16a antigen	CD16A	E9PG94	32.561	4.02E-59	7.89E+08	1.78E+06	3.32E+06	2.24E+06
N-acetylmuramoyl-L-alanine amidase	PGLYRP2	Q96PD5-2	68	0.00E+00	7.81E+08	2.89E+06	1.68E+06	1.77E+06
Developmental arteries and neural crest EGF-like protein	DANCE	G3V4U0	50.881	0.00E+00	7.74E+08	2.65E+06	2.24E+06	2.65E+06
Acrosomal serine protease inhibitor	PCI	P05154	45.674	0.00E+00	7.63E+08	1.67E+06	3.94E+06	2.98E+06
Putative uncharacterized protein BTN2A1	BTN2A1	B9ZVU6	60.041	2.66E-116	7.57E+08	2.03E+06	3.18E+06	2.78E+06
Nectin-like protein 5	PVR	P15151	45.302	4.14E-138	7.48E+08	1.78E+06	2.74E+06	2.23E+06
Ig heavy chain V-III region BRO		P01766	13.227	1.50E-249	7.35E+08	4.31E+06	2.87E+06	1.58E+06
Ceruloplasmin	CP	P00450	122.2	1.43E-220	7.31E+08	3.72E+06	2.29E+06	3.69E+06
Gc-globulin	GC	P02774	52.963	0.00E+00	7.25E+08	2.02E+06	2.78E+06	2.49E+06
Nuclear transport factor 2	NTF2	P61970	14.478	0.00E+00	7.22E+08	2.87E+06	2.34E+06	1.50E+06
Lanimostim	CSF1	P09603	60.179	7.03E-228	7.13E+08	1.68E+06	1.98E+06	2.16E+06

Fibrinogen alpha chain	FGA	P02671	94.972	0.00E+00	7.11E+08	2.18E+06	2.21E+06	1.70E+06
Cystatin-3	CST3	P01034	15.799	1.25E-48	7.11E+08	2.30E+06	1.54E+06	1.60E+06
Glucosamine-6-sulfatase	GNS	F6S8M0	65.709	0.00E+00	6.98E+08	2.77E+06	2.32E+06	2.97E+06
Collagen alpha-1(XV) chain	COL15A1	P39059	141.72	2.69E-158	6.85E+08	2.02E+06	1.73E+06	1.77E+06
Cystatin-6	CST6	Q15828	16.511	0.00E+00	6.82E+08	3.41E+06	1.69E+06	1.82E+06
Ig kappa chain V-I region AG		P01593	11.992	0.00E+00	6.80E+08	3.01E+06	1.71E+06	1.71E+06
Apolipoprotein D	APOD	P05090	96	4.92E+01	5.10E+10	1.92E+08	1.49E+08	1.66E+08
Breast cancer estrogen-inducible protein	BCEI	P04155	9.1494	3.08E-194	6.40E+08	1.77E+06	2.18E+06	3.70E+06
Ig kappa chain V-III region POM		P01624	11.922	1.39E-20	6.39E+08	2.11E+06	1.53E+06	2.26E+06
Liver-expressed antimicrobial peptide 2	LEAP2	Q969E1	8.8135	3.99E-21	6.29E+08	2.13E+06	1.22E+06	1.19E+06
Ig kappa chain V-IV region B17		P06314	14.966	0.00E+00	6.20E+08	2.54E+06	1.38E+06	1.85E+06
Actin, cytoplasmic 1	ACTB	P60712	41.736	0.00E+00	6.17E+08	2.08E+06	3.27E+06	2.01E+06
Activation peptide	PLG	P00747	90.568	4.79E-281	6.12E+08	2.31E+06	1.92E+06	2.57E+06
ASCR	PRIP	P04156	27.661	8.29E-63	5.93E+08	2.53E+06	1.99E+06	2.54E+06
Gp80-LNGFR	NGFR	P08138	45.183	2.63E-141	5.87E+08	1.66E+06	2.64E+06	3.02E+06
ABPP	A4	P05067	86.942	6.14E-53	5.74E+08	1.65E+06	2.49E+06	2.71E+06
Fibulin-6	FIBL6	Q96RW7	613.38	0.00E+00	5.67E+08	1.98E+06	1.80E+06	1.64E+06
Elastin microfibril interface located protein 3	EMILIN3	Q9H8L6	104.41	6.86E-155	5.63E+08	1.57E+06	1.72E+06	1.23E+06
Vitamin K-dependent protein Z	PROZ	P22891-2	47.053	6.83E-122	5.51E+08	2.08E+06	1.92E+06	2.03E+06
CCN family member 5	CCN5	O76076	26.825	0.00E+00	5.34E+08	1.47E+06	1.29E+06	1.31E+06
Hexabrachion-like protein	HXBL	E7EPZ9	458.38	0.00E+00	5.34E+08	1.53E+06	1.48E+06	2.01E+06
Chondroitin sulfate proteoglycan 4	CSPG4	Q6UVK1	250.53	3.81E-195	5.34E+08	2.12E+06	1.81E+06	1.41E+06
CD107 antigen-like family member A	LAMP1	P11279	44.882	2.33E-45	5.32E+08	1.44E+06	2.89E+06	2.08E+06
Agrin	AGRIN	O00468	214.84	0.00E+00	5.26E+08	2.18E+06	1.19E+06	1.74E+06
Mucin-like protein 1	MUCL1	Q96DR8	9.0391	9.85E-32	5.26E+08	1.51E+06	1.37E+06	1.62E+06
Apolipoprotein A1	APOA1	P02647	30.777	3.11E-161	5.24E+08	1.41E+06	1.64E+06	1.01E+06
Arylsulfatase A	ARSA	P15289	53.588	1.42E-303	5.00E+08	1.77E+06	1.55E+06	1.47E+06
Herpes virus entry mediator A	HVEA	Q92956	30.391	4.72E-286	4.99E+08	1.52E+06	2.07E+06	2.39E+06
Ig kappa chain V-III region NG9		P01621	10.729	1.05E-68	4.94E+08	1.78E+06	1.43E+06	1.19E+06
Complement component C7	C7	P10643	93.517	7.64E-158	4.87E+08	9.89E+05	1.53E+06	1.53E+06
Glutaminyl cyclase	QPCT	Q16769	40.876	1.38E-132	4.82E+08	1.74E+06	1.65E+06	1.54E+06
CD81 partner 3	CD81P3	Q969P0	65.033	4.95E-193	4.67E+08	1.91E+06	1.41E+06	1.11E+06
Lysosomal acid phosphatase	ACP2	P11117	48.344	1.19E-83	4.66E+08	1.47E+06	2.48E+06	1.07E+06
B7 homolog 2	B7H2	O75144-2	34.225	1.24E-109	4.49E+08	1.18E+06	1.64E+06	1.69E+06
gp17	GCDFP15	P12273	16.572	0.00E+00	4.35E+08	1.56E+06	1.27E+06	1.53E+06

APP secretase	CPSB	P07858	37.821	8.08E-62	4.27E+08	1.39E+06	1.17E+06	1.98E+06
Tamm-Horsfall urinary glycoprotein	UMOD	E9PEA4	110	3.11E+01	1.27E+11	2.03E+08	7.91E+08	7.45E+08
C1r-like serine protease analog protein	C1RL	Q9NZP8	53.498	1.04E-102	4.20E+08	1.29E+06	1.48E+06	1.19E+06
Serpin A7	SERPINA7	P05543	46.324	0.00E+00	4.17E+08	1.31E+06	7.48E+05	1.13E+06
ATTR	PALB	E7EW61	20.294	3.72E-73	4.17E+08	1.36E+06	1.86E+06	1.31E+06
IgLON family member 4	IGLON4	Q7Z3B1	38.719	0.00E+00	4.07E+08	1.38E+06	1.06E+06	1.28E+06
Limitrin	MXRA8	Q9BRK3-2	49.619	1.29E-190	3.98E+08	1.45E+06	2.27E+06	1.75E+06
Alpha-N-acetylglucosaminidase	NAGLU	P54802	82.265	0.00E+00	3.89E+08	1.86E+06	1.35E+06	1.05E+06
Cell surface retention sequence-binding protein 1	CRSBP1	Q9Y5Y7	35.213	4.04E-79	3.89E+08	1.32E+06	4.57E+05	8.62E+05
Alpha-glucosidase	MGA	E7ER45	312.11	3.27E-270	3.72E+08	1.42E+06	1.20E+06	1.22E+06
Cartilage oligomeric matrix protein	COMP	P49747	82.86	0.00E+00	3.65E+08	1.24E+06	1.39E+06	2.01E+06
Beta-globin	HBB	P68871	15.998	3.45E-198	3.48E+08	7.27E+05	1.21E+06	3.09E+06
Osteoclast-associated immunoglobulin-like receptor	OSCAR	Q8IYS5-7	30.877	3.06E-164	3.47E+08	1.12E+06	1.39E+06	1.25E+06
Latent-transforming growth factor beta-binding protein 4	LTBP4	Q8N2S1-2	165.74	6.42E-117	3.46E+08	8.94E+05	7.98E+05	1.10E+06
Brain Ig-like molecule with tyrosine-based activation motifs	BIT	P78324-2	55.394	5.30E-161	3.40E+08	1.02E+06	8.45E+05	1.23E+06
Acid beta-galactosidase	ELNR1	P16278	76.074	1.13E-144	3.39E+08	1.88E+06	1.27E+06	8.31E+05
UBC protein	RPS27A	P0CG48	77.028	2.82E-116	3.38E+08	1.56E+06	1.40E+06	1.45E+06
5H9 antigen	CD9	P21926	25.416	2.11E-43	3.35E+08	1.14E+06	1.67E+06	1.22E+06
Bile salt-activated lipase	BAL	P19835	79.321	2.25E-155	3.25E+08	8.18E+05	1.09E+06	3.01E+05
Beta-microseminoprotein	MSMB	P08118	12.865	2.72E-11	3.22E+08	1.31E+06	5.27E+05	7.95E+05
Cadherin-2	CDH2	P19022	99.808	1.32E-166	3.20E+08	8.34E+05	1.04E+06	1.29E+06
CD300 antigen-like family member A	CD300A	Q9UGN4	33.2	3.49E-27	3.14E+08	7.65E+05	8.13E+05	6.94E+05
Adult folate-binding protein	FOLR	P15328	29.819	3.54E-164	3.11E+08	9.97E+05	1.53E+06	1.10E+06
Pancreatic secretory trypsin inhibitor	PSTI	P00995	8.5067	9.46E-149	3.01E+08	7.92E+05	1.22E+06	1.22E+06
Twisted gastrulation protein homolog 1	PSEC0250	Q9GZX9	25.017	3.95E-46	2.98E+08	9.14E+05	9.31E+05	7.51E+05
Collagen alpha-3(VI) chain	COL6A3	P12111	343.67	4.15E-188	2.92E+08	1.12E+06	1.06E+06	1.11E+06
Melanoma-associated antigen p97	MAP97	P08582	80.214	5.34E-184	2.87E+08	1.42E+06	9.42E+05	4.82E+05
LDH heart subunit	LDHB	P07195	36.638	3.40E-100	2.84E+08	8.70E+05	1.12E+06	9.22E+05
Di-N-acetylchitobiase	CTB	Q01459	43.759	4.57E-127	2.81E+08	6.81E+05	4.60E+05	9.29E+05
Carboxypeptidase N 83 kDa chain	ACBP	P22792	60.556	0.00E+00	2.81E+08	8.05E+05	1.00E+06	6.29E+05

Cell growth-inhibiting gene 1 protein	CLN2	O14773	61.247	8.37E-108	2.79E+08	8.37E+05	7.04E+05	6.46E+05
Zymogen granule protein 16 homolog B	UNQ773/PRO1567	Q96DA0	22.739	1.56E-167	2.77E+08	9.51E+05	6.63E+05	6.64E+05
Herpes virus entry mediator B	HVEB	Q92692	57.741	5.89E-95	2.76E+08	1.17E+06	8.99E+05	6.87E+05
Dermatopontin	DPT	Q07507	24.005	2.76E-120	2.76E+08	9.34E+05	1.32E+06	8.46E+05
Glycoprotein 6	GP6	Q9HCN6-3	67.475	3.22E-74	2.74E+08	9.40E+05	1.04E+06	9.49E+05
Breast carcinoma-associated antigen DF3	MUC1	P15941-2	122.94	3.35E-275	2.73E+08	8.33E+05	1.01E+06	8.74E+05
Ig heavy chain V-III region TIL		P01765	11.612	9.91E-247	2.73E+08	1.78E+06	6.80E+05	5.71E+05
Mucosal addressin cell adhesion molecule 1	MADCAM1	F5H511	42.439	2.85E-94	2.68E+08	6.49E+05	1.21E+06	1.09E+06
Ig mu chain C region	IGHM	P01871-2	51.79	2.54E-94	2.67E+08	1.82E+06	6.70E+05	1.09E+05
6-phosphogluconolactonase	PGLS	O95336	27.547	5.77E-41	2.65E+08	9.46E+05	7.83E+05	5.14E+05
Prostate stem cell antigen	PSCA	O43653	12.912	4.93E-75	2.58E+08	7.75E+05	1.18E+06	7.37E+05
Fibulin 1	CTA-941F9.7-002	B1AHL2	78.329	6.81E-186	2.57E+08	7.57E+05	8.22E+05	8.79E+05
Collagen alpha-1(XII) chain	COL12A1	Q99715	333.14	7.66E-195	2.56E+08	9.25E+05	1.02E+06	1.64E+06
Alpha-globin	HBA1	P69905	15.257	1.78E-33	2.52E+08	3.72E+05	9.15E+05	2.34E+06
155 kDa platelet multimerin	ECM	Q13201	138.11	3.91E-21	2.50E+08	6.03E+05	8.97E+05	9.88E+05
Ig superfamily receptor LNIR	LNIR	Q96NY8	55.454	4.58E-163	2.41E+08	9.03E+05	9.00E+05	3.42E+05
Gamma-glutamyltransferase 1	GGT	P19440	61.409	0.00E+00	2.39E+08	8.60E+05	1.15E+06	5.20E+05
HCNPPP	PBP	P30086	21.057	1.44E-186	2.35E+08	9.07E+05	1.04E+06	7.06E+05
Ig gamma-4 chain C region	IGHG4	P01861	35.94	0.00E+00	2.35E+08	1.43E+06	7.55E+05	2.14E+05
EGF-containing fibulin-like extracellular matrix protein 2	EFEMP2	O95967	49.405	6.65E-61	2.32E+08	6.91E+05	8.37E+05	8.97E+05
INCAM-100	L1CAM	P19320	81.275	1.28E-213	2.31E+08	7.69E+05	5.28E+05	8.15E+05
Interleukin-18-binding protein	IL18BP	G3V1C5	21.93	1.12E-12	2.28E+08	6.58E+05	1.13E+06	7.87E+05
Carboxypeptidase C	CTSA	P10619	54.465	6.06E-264	2.27E+08	1.08E+06	8.29E+05	8.79E+05
C3B/C4B inactivator	CFI	E7ETH0	66.625	0.00E+00	2.27E+08	6.94E+05	1.18E+06	7.65E+05
Hepatocyte growth factor activator inhibitor type 2	HAI2	O43291	28.228	2.03E-23	2.25E+08	6.84E+05	7.93E+05	6.19E+05
B(2)GCN homolog	EIF3A	P56537	26.599	2.86E-154	2.25E+08	7.14E+05	1.05E+06	7.74E+05
Cathepsin D	CPSD	P07339	44.552	9.51E-126	2.25E+08	6.72E+05	8.46E+05	5.58E+05
Acid ceramidase	ASAH	Q13510-2	46.503	1.76E-63	2.24E+08	9.33E+05	1.23E+06	9.34E+05
Nogo receptor-like 3	NGRH1	Q86UN3	46.105	1.01E-69	2.18E+08	7.12E+05	8.54E+05	9.11E+05

Antiapoptotic protein GW112	GW112	Q6UX06	57.279	3.49E-227	2.18E+08	8.96E+05	7.87E+05	6.78E+05
Cadherin family member 2	CDHF2	F8W7U2	101.4	8.49E-112	2.16E+08	1.20E+06	4.34E+05	4.88E+05
8D6 antigen	8D6A	Q9NPF0	28.991	5.87E-90	2.15E+08	6.10E+05	7.20E+05	6.27E+05
Prostasin	PRSS8	Q16651	36.431	5.31E-13	2.14E+08	8.37E+05	8.23E+05	6.98E+05
Apolipoprotein E	APOE	P02649	36.154	7.66E-120	2.12E+08	5.03E+05	1.02E+06	5.85E+05
Epididymal secretory protein E1	HE1	G3V3D1	23.699	0.00E+00	2.10E+08	6.60E+05	8.39E+05	8.38E+05
		P00978	39.234	6.09E-09	2.05E+08	1.05E+06	4.44E+05	5.41E+05
EFL-3	EFL3	P98172	38.006	2.97E-62	2.03E+08	7.44E+05	5.13E+05	5.86E+05
Amphiglycan	SDC4	P31431	21.641	4.00E-112	2.02E+08	6.59E+05	9.19E+05	7.16E+05
25 kDa alpha-2-microglobulin-related subunit of MMP-9	HNL	P80188	22.588	9.30E-181	1.99E+08	1.15E+06	7.61E+05	5.73E+05
Fructose-bisphosphate aldolase B	ALDB	P05062	39.473	0.00E+00	1.98E+08	7.89E+05	1.50E+06	4.98E+05
Triple homeobox protein 1	KIAA0395	F5H820	106.32	8.92E-04	1.95E+08	1.76E+06	7.63E+05	1.33E+06
2-oxoglutarate dehydrogenase complex component E2	DLST	P36957	48.755	3.00E-108	1.92E+08	5.96E+05	9.21E+05	8.49E+05
Cell adhesion molecule 1	CADM1	F5H0J4	49.633	1.83E-246	1.84E+08	4.99E+05	7.38E+05	6.33E+05
Apolipoprotein(a)	LPA	P08519	501.31	1.62E-43	1.82E+08	6.45E+05	7.88E+05	9.11E+05
Cathepsin P	CTSZ	Q9UBR2	33.868	1.52E-152	1.81E+08	6.31E+05	7.35E+05	9.50E+05
Fibulin-2	FBLN2	P98095-2	131.86	5.19E-115	1.75E+08	4.96E+05	4.64E+05	5.89E+05
Cathepsin C	CPPI	P53634	51.853	4.82E-111	1.74E+08	6.99E+05	4.88E+05	2.87E+05
CD172 antigen-like family member B	SIRPB1	O00241	43.211	1.64E-107	1.72E+08	4.14E+05	4.35E+05	5.55E+05
Syndecan-1	SDC	P18827	32.461	2.91E-25	1.71E+08	6.51E+05	5.92E+05	5.52E+05
Quiescin Q6	QSCN6	O00391	82.577	3.82E-195	1.71E+08	5.43E+05	6.25E+05	6.37E+05
Delangin	IDN3	Q6KC79	316.05	1.02E-04	1.70E+08	3.81E+05	6.62E+05	8.94E+05
Dehydropeptidase-I	DPEP1	P16444	45.673	3.26E-45	1.70E+08	8.84E+05	7.94E+05	4.34E+05
Cadherin-11	CDH11	P55287	87.964	6.51E-35	1.67E+08	7.49E+05	6.20E+05	5.36E+05
Lecithin-cholesterol acyltransferase	LCAT	P04180	49.577	4.50E-145	1.67E+08	5.08E+05	4.80E+05	6.52E+05
Complement component 4A (Rodgers blood group)	C4A	B0UZ83	192.87	2.24E-190	1.64E+08	8.19E+05	4.54E+05	4.07E+05
Keratan sulfate proteoglycan lumican	LDC	P51884	38.429	2.83E-74	1.61E+08	4.38E+05	5.09E+05	5.06E+05
1,4-alpha-D-glucan glucanohydrolase 1	AMY1	P04745	57.767	0.00E+00	1.60E+08	8.45E+05	3.76E+05	4.73E+05
Adipose tissue-specific secretory factor	FIZZ3	Q9HD89	11.419	5.57E-264	1.59E+08	5.45E+05	7.30E+05	5.80E+05
Fcgamma-binding protein antigen	FCGBP	Q9Y6R7	572.01	3.82E-199	1.56E+08	1.04E+06	2.82E+05	2.77E+05
Carboxypeptidase M	CPM	P14384	50.513	1.68E-47	1.55E+08	5.76E+05	5.54E+05	4.99E+05
Ig heavy chain V-III region GAL		P01781	11.771	3.21E-174	1.53E+08	8.32E+05	5.31E+05	4.04E+05

Angiotensin I	AGT	P01019	53.154	5.64E-148	1.53E+08	7.91E+05	3.48E+05	3.54E+05
ADABP	ADCP2	P27487	88.278	1.65E-89	1.51E+08	7.99E+05	4.11E+05	7.48E+05
Matrilin-4	MATN4	O95460	68.486	1.45E-166	1.50E+08	6.14E+05	5.60E+05	9.29E+05
Protein CEGP1	CEGP1	E7EQD6	112.94	9.77E-07	1.46E+08	5.82E+05	2.45E+05	3.97E+05
Ig kappa chain V-II region RPMI 6410		P06310	14.707	7.28E-33	1.45E+08	8.18E+05	3.73E+05	2.07E+05
Extracellular superoxide dismutase [Cu-Zn]	SOD3	P08294	25.851	7.53E-168	1.44E+08	4.86E+05	6.18E+05	4.70E+05
Putative uncharacterized protein ENSP00000387251	IGLC1	B9A064	23.063	0.00E+00	1.44E+08	6.14E+05	3.71E+05	5.11E+05
67 kDa matrix metalloproteinase-9	CLG4B	P14780	78.457	1.06E-18	1.43E+08	4.25E+05	3.40E+05	5.04E+05
Ig alpha-2 chain C region	IGHA2	P01877	36.526	0.00E+00	1.43E+08	4.40E+05	7.00E+05	5.79E+05
Afamin	AFM	P43652	69.068	3.09E-60	1.41E+08	3.98E+05	6.34E+05	6.34E+05
Bone marrow proteoglycan	MBP	P13727	25.205	1.83E-44	1.40E+08	4.86E+05	3.80E+05	4.89E+05
Carboxypeptidase E	CPE	P16870	53.15	6.04E-77	1.40E+08	5.04E+05	5.98E+05	2.60E+05
Antithrombin-III	AT3	P01008	52.602	1.03E-31	1.39E+08	4.67E+05	2.48E+05	4.55E+05
Neural cell adhesion molecule 1	NCAM	P13591	94.573	0.00E+00	1.39E+08	5.34E+05	4.78E+05	7.03E+05
Auberger B antigen	BCAM	P50895	67.404	1.60E-80	1.38E+08	5.93E+05	5.81E+05	3.75E+05
Hepatocyte growth factor activator inhibitor type 1	HAI1	O43278	58.397	1.35E-86	1.36E+08	3.98E+05	3.67E+05	3.87E+05
Prolylcarboxypeptidase (Angiotensinase C), isoform CRA_b	hCG_27286	A8MU24	58.099	2.69E-72	1.35E+08	5.28E+05	6.21E+05	3.44E+05
GP40	CD7	P09564	25.409	3.11E-34	1.35E+08	4.21E+05	4.31E+05	5.64E+05
OPCML protein	OPCML	B7ZLQ1	38.849	7.75E-131	1.29E+08	3.25E+05	2.23E+05	4.12E+05
CAK1 antigen	MPF	Q13421-2	71.491	5.69E-140	1.28E+08	6.46E+05	2.51E+05	3.59E+05
Beta-type platelet- derived growth factor receptor	PDGFRB	P09619	123.97	4.25E-53	1.27E+08	3.66E+05	3.05E+05	3.00E+05
Procollagen C- endopeptidase enhancer 1	PCOLCE	Q15113	47.972	2.79E-29	1.26E+08	4.17E+05	2.04E+05	3.38E+05
Angiopoietin-like protein 2	ANGPTL2	Q9UKU9	57.104	4.27E-105	1.24E+08	5.40E+05	5.05E+05	4.34E+05
Intercellular adhesion molecule 2	ICAM2	P13598	30.654	8.02E-73	1.23E+08	3.49E+05	3.19E+05	3.77E+05
Complement factor H- related protein 1	CFHL	Q03591	37.65	1.09E-150	1.21E+08	4.91E+05	4.04E+05	5.44E+05
Cytotactin	HXB	P24821	240.85	1.12E-214	1.21E+08	4.03E+05	4.31E+05	5.56E+05
Alpha-D-galactosidase A	GLA	P06280	48.766	4.54E-141	1.20E+08	4.74E+05	4.58E+05	2.96E+05
Conjugase	GGH	Q92820	35.964	2.25E-193	1.19E+08	6.73E+05	3.48E+05	4.50E+05
2-phospho-D-glycerate hydro-lyase	ENO1	P06733	47.168	1.11E-227	1.17E+08	3.87E+05	7.10E+05	2.77E+05
Corticosteroid-binding globulin	CBG	P08185	45.14	1.82E-30	1.15E+08	5.88E+05	2.32E+05	2.90E+05
CDw130	IL6ST	P40189	103.54	3.55E-14	1.14E+08	3.86E+05	3.58E+05	3.29E+05

Ciliary neurotrophic factor receptor subunit alpha	CNTFR	P26992	40.633	6.30E-24	1.14E+08	4.53E+05	3.23E+05	4.55E+05
Amplixin	CTTN	Q14247	61.585	0.00E+00	1.13E+08	1.90E+05	2.79E+05	3.01E+05
Activin receptor type IB	ACVR1B	P36896-4	61.438	3.35E-25	1.13E+08	2.23E+05	3.00E+05	3.14E+05
C3 and PZP-like alpha-2-macroglobulin domain-containing protein 1	C3	P01024	187.15	0.00E+00	1.13E+08	0.00E+00	4.45E+05	2.97E+05
GCTM-2 antigen	PCLP	F5GWY5	58.865	8.24E-25	1.10E+08	3.23E+05	5.24E+05	3.52E+05
Ig heavy chain V-III region VH26		P01764	12.582	1.50E-93	1.09E+08	6.33E+05	3.86E+05	3.23E+05
Big LEN	PCSK1N	Q9UHG2	27.372	3.04E-101	1.05E+08	2.73E+05	3.78E+05	2.07E+05
Cell surface antigen MAX.3	CD84	Q9UIB8	38.782	7.12E-30	1.05E+08	3.16E+05	2.26E+05	2.55E+05
Sushi domain-containing protein 2	SUSD2	Q9UGT4	90.207	5.90E-247	1.04E+08	3.65E+05	4.71E+05	2.69E+05
Lipocalin-1	LCN1	P31025	19.25	4.85E-57	1.03E+08	5.58E+05	1.26E+05	2.39E+05
Choline phosphatase 3	PLD3	Q8IV08	54.705	6.54E-51	1.03E+08	4.11E+05	5.10E+05	3.09E+05
cDNA FLJ59679, highly similar to Biotinidase (EC 3.5.1.12)	BTD	A6NHF2	61.51	7.85E-55	1.01E+08	3.28E+05	2.40E+05	2.68E+05
Cadherin-related family member 2	CDHR2	Q9BYE9	141.54	2.11E-78	1.01E+08	4.89E+05	4.13E+05	5.14E+05
Guanylate cyclase activator 2A	GUCA2	Q02747	12.388	4.41E-26	9.90E+07	3.03E+05	3.38E+05	4.38E+05
Acetylcholinesterase-associated protein	ACHAP	O60888-2	20.925	2.87E-06	9.90E+07	5.58E+05	2.17E+05	1.31E+05
Collagen alpha-2(VI) chain	COL6A2	P12110-2	97.418	2.92E-147	9.75E+07	2.81E+05	4.77E+05	3.51E+05
Thrombospondin-1	THBS1	P07996	129.38	1.09E-104	9.55E+07	2.71E+05	3.00E+05	3.00E+05
Immunoglobulin superfamily containing leucine-rich repeat protein	ISLR	O14498	45.997	3.09E-26	9.52E+07	2.17E+05	2.43E+05	2.45E+05
Cathepsin L1	CTSL	P07711	37.564	1.75E-25	9.47E+07	2.99E+05	3.29E+05	3.34E+05
Collectin placenta protein 1	CLP1	Q5KU26	81.514	4.60E-64	9.46E+07	4.37E+05	1.35E+05	1.42E+05
Protein HEG homolog 1	HEG1	Q9ULI3	147.46	1.35E-93	9.45E+07	1.74E+05	2.96E+05	4.46E+05
Cell surface glycoprotein MUC18	MCAM	P43121	71.607	9.26E-66	9.30E+07	3.15E+05	1.93E+05	2.28E+05
5F7	BSG	P35613	42.2	7.35E-13	9.24E+07	2.94E+05	2.12E+05	2.40E+05
Aminopeptidase A	ENPEP	Q07075	109.24	2.51E-168	9.24E+07	4.44E+05	3.27E+05	1.77E+05
Laminin B2 chain	LAMB2	P11047	177.6	3.04E-103	9.07E+07	2.93E+05	2.62E+05	2.73E+05
EndoCAM	PECAM1	P16284	82.535	1.11E-10	9.01E+07	2.26E+05	3.16E+05	4.51E+05
Biglycan	BGN	P21810	41.654	4.63E-09	8.83E+07	2.63E+05	4.31E+05	2.91E+05
Dipeptidyl aminopeptidase II	DPP2	Q9UHL4	54.341	3.25E-109	8.79E+07	3.49E+05	3.21E+05	2.97E+05
Aspartyl protease 4	NAP1	O96009	45.386	2.31E-148	8.69E+07	3.64E+05	2.71E+05	2.57E+05
Cyclophilin A	CYPA	P62937	18.012	7.36E-22	8.54E+07	2.40E+05	3.94E+05	2.75E+05
1,4-alpha-D-glucan glucanohydrolase 2B	AMY2B	P19961	57.709	0.00E+00	8.53E+07	3.11E+05	1.70E+05	2.08E+05

Cartilage intermediate layer protein 2	CILP2	Q8IUL8	126.29	7.90E-68	8.52E+07	3.71E+05	2.79E+05	2.97E+05
COCH-5B2	COCH	O43405	59.482	3.16E-42	8.38E+07	2.54E+05	3.37E+05	1.79E+05
cDNA FLJ55673, highly similar to Complement factor B (EC 3.4.21.47)	BF	B4E1Z4	140.94	1.46E-120	8.18E+07	1.01E+05	3.21E+05	3.44E+05
Close homolog of L1	CALL	O00533-2	136.7	2.07E-70	8.13E+07	2.59E+05	1.62E+05	2.56E+05
Defensin, alpha 1	DEF1	P59665	10.201	2.57E-21	8.10E+07	3.71E+05	2.96E+05	5.97E+05
H-Lse	SIAE	Q9HAT2	58.314	9.33E-59	8.05E+07	4.15E+05	3.26E+05	3.79E+05
Collagen alpha-1(XXVIII) chain	COL28	Q2UY09	116.66	1.09E-16	7.95E+07	2.43E+05	2.31E+05	2.47E+05
G-protein coupled receptor family C group 5 member C	GPRC5C	Q9NQ84-2	49.388	9.72E-51	7.88E+07	2.01E+05	3.12E+05	3.02E+05
Glyceraldehyde-3-phosphate dehydrogenase	CDABP0047	P04406	36.053	7.66E-76	7.82E+07	2.01E+05	4.57E+05	3.30E+05
HBV XAg-transactivated protein 4	C17orf37	Q9BRT3	12.403	1.63E-08	7.80E+07	2.24E+05	4.20E+05	4.99E+05
Protocadherin gamma-C3	PCDH2	Q9UN70	101.08	5.05E-17	7.80E+07	3.15E+05	2.57E+05	1.67E+05
Cartilage intermediate layer protein 1	CILP	O75339	132.56	1.88E-33	7.78E+07	2.60E+05	1.63E+05	2.32E+05
Man(9)-alpha-mannosidase	MAN1A1	P33908	72.968	7.64E-61	7.68E+07	1.90E+05	3.96E+05	2.07E+05
Cystatin-4	CST4	P01036	16.214	1.02E-46	7.66E+07	2.04E+05	1.27E+04	1.63E+05
		P02769	69.293	8.20E-83	7.57E+07	2.59E+05	3.63E+05	1.10E+05
ABP-280-like protein	ABPL	Q14315	291.02	1.06E-12	7.39E+07	3.89E+05	3.98E+05	2.64E+05
DDAHII	DDAH	O95865	29.644	5.32E-44	7.39E+07	2.17E+05	1.84E+05	1.84E+05
Delta and Notch-like epidermal growth factor-related receptor	BET	Q8NFT8	78.474	2.32E-61	7.27E+07	2.65E+05	2.18E+05	2.72E+05
Fetomodulin	THBD	P07204	60.329	3.86E-87	7.27E+07	1.42E+05	3.03E+05	2.62E+05
Fatty acid-binding protein 3	FABP11	P05413	14.858	5.76E-19	7.23E+07	1.36E+05	1.29E+05	2.23E+05
cDNA FLJ55176, highly similar to G-protein coupled receptor family C group 5 member B	GPRC5B	B7Z831	47.695	6.27E-42	7.22E+07	1.60E+05	1.73E+05	2.55E+05
Ig lambda chain V-I region HA		P01700	11.896	3.62E-11	7.14E+07	3.44E+05	2.35E+05	2.44E+05
Bone morphogenetic protein receptor type II	BMPR2	Q13873	115.2	1.27E-20	7.06E+07	2.26E+05	2.39E+05	2.01E+05
Ig heavy chain V-III region BUT		P01767	11.906	5.85E-36	6.99E+07	4.82E+05	1.89E+05	2.11E+05
EPH homology kinase 3	EHK3	Q15375	112.1	0.00E+00	6.99E+07	1.67E+05	1.71E+05	1.71E+05

Putative uncharacterized protein ENSP00000323500	PGCP	B5MDX4	59.757	1.12E-84	6.92E+07	2.73E+05	1.91E+05	1.52E+05
Latent-transforming growth factor beta-binding protein 1	LTBP1	Q14766-4	186.87	1.23E-184	6.90E+07	2.50E+05	1.00E+05	2.12E+05
Fibronectin receptor subunit beta	FNRB	P05556-3	91.619	2.70E-60	6.74E+07	1.93E+05	3.14E+05	2.14E+05
Triosephosphate isomerase	TPI	P60174	30.791	4.02E-134	6.71E+07	2.29E+05	3.19E+05	1.98E+05
Calcium-independent alpha-latrotoxin receptor 1	KIAA0821	O94910	162.71	1.63E-21	6.63E+07	2.40E+05	2.68E+05	2.42E+05
Retinoid-inducible serine carboxypeptidase	MSTP034	Q9HB40	50.83	1.04E-46	6.63E+07	2.73E+05	2.19E+05	2.14E+05
CDw90	THY1	E9PNQ8	18.164	1.16E-53	6.57E+07	2.46E+05	1.63E+05	1.77E+05
Apolipoprotein A2	APOA2	P02652	11.175	5.51E-30	6.49E+07	1.57E+05	1.72E+05	7.29E+04
Cadherin-like protein 1	PCDH1	Q08174-2	133.72	4.66E-47	6.47E+07	2.37E+05	1.35E+05	1.63E+05
Putative uncharacterized protein RNASET2	RNASET2	C9JIU8	35.335	5.86E-38	6.43E+07	2.42E+05	2.20E+05	2.58E+05
Receptor-type tyrosine-protein phosphatase gamma	PTPG	P23470	162	1.07E-70	6.43E+07	2.44E+05	1.98E+05	1.70E+05
Sodium pump subunit alpha-2	ATP1A2	P50993	112.26	8.57E-04	6.41E+07	0.00E+00	5.24E+04	6.27E+04
Density-enhanced phosphatase 1	DEP1	Q12913	145.94	2.51E-30	6.40E+07	1.85E+05	2.92E+05	1.61E+05
NHL repeat-containing protein 3	NHLRC3	Q5JS37	38.282	2.15E-20	6.39E+07	2.35E+05	2.16E+05	2.40E+05
4Ig-B7-H3	B7H3	Q5ZPR3	57.235	4.96E-66	6.39E+07	1.95E+05	1.26E+05	1.82E+05
Epididymis-specific alpha-mannosidase	KIAA0935	Q9Y2E5	113.98	8.94E-87	6.38E+07	1.46E+05	1.34E+05	1.58E+05
Fibroblast growth factor-inducible immediate-early response protein 14	FN14	Q9NP84	13.911	1.66E-06	6.18E+07	2.14E+05	1.18E+05	1.06E+05
Fatty acid-binding protein 1	FABP1	P07148	14.208	2.09E-27	6.12E+07	3.81E+05	1.59E+05	1.60E+05
Kinase-related protein	MLCK	Q15746	210.71	2.98E-28	6.11E+07	1.24E+05	2.83E+05	2.00E+05
C-type lectin domain family 14 member A	C14orf27	Q86T13	51.635	3.26E-51	5.92E+07	2.07E+05	1.53E+05	9.44E+04
Antigen AC133	MSTP061	O43490	97.201	1.36E-47	5.85E+07	1.90E+05	3.06E+05	3.06E+05
Aminoacylase-1	ACY1	Q03154	45.884	3.47E-29	5.77E+07	1.92E+05	4.98E+05	1.89E+05
C-type lectin domain family 4 member G	CLEC4G	Q6UXB4	32.561	1.36E-07	5.68E+07	1.64E+05	4.26E+04	1.71E+05
		P01966	15.184	4.97E-13	5.67E+07	1.05E+05	2.29E+05	4.82E+05
Uncharacterized protein C2orf81	C2orf81	G3XAA6	64.084	1.83E-04	5.65E+07	1.71E+05	1.00E+05	1.63E+05
Alpha-dystroglycan	DAG1	Q14118	97.44	7.08E-73	5.58E+07	2.47E+05	1.99E+05	1.39E+05
CCN family member 2	CCN2	P29279	38.091	5.88E-54	5.52E+07	2.00E+05	1.72E+05	1.95E+05

Melanoma differentiation-associated protein 9	MDA9	O00560	32.444	1.26E-63	5.50E+07	1.11E+05	1.68E+05	1.73E+05
Carboxypeptidase, vitellogenic-like	CPVL	Q9H3G5	54.163	2.51E-179	5.49E+07	1.72E+05	2.72E+05	1.41E+05
Protein FAM3C	FAM3C	Q92520	24.68	3.00E-44	5.29E+07	1.94E+05	1.69E+05	8.27E+04
CD85 antigen-like family member F	ILT11	A6NI73	32.755	5.89E-22	5.22E+07	1.78E+05	2.75E+05	1.94E+05
Urokinase-type plasminogen activator	PLAU	P00749	48.507	9.90E-66	5.19E+07	1.54E+05	3.47E+05	2.86E+05
Cervical mucin	MUC5	E9PBJ0	596.68	4.99E-64	5.19E+07	2.82E+05	1.11E+05	4.66E+04
Hepatocyte growth factor activator	HGFAC	D6RAR4	71.482	1.29E-08	5.16E+07	1.51E+05	1.75E+05	2.24E+05
Beta-actin-like protein 2	ACTBL2	Q562R1	42.003	7.98E-209	5.12E+07	1.62E+05	2.51E+05	3.07E+05
Epidermal-type fatty acid-binding protein	FABP5	Q01469	15.164	2.89E-146	5.02E+07	8.63E+03	2.75E+05	1.22E+05
Acetylneuraminyl hydrolase	NANH	Q99519	45.467	6.33E-32	4.99E+07	1.42E+05	1.42E+05	1.46E+05
1-O-acylceramide synthase	LYPLA3	Q8NCC3	46.657	6.69E-78	4.85E+07	2.32E+05	2.19E+05	1.27E+05
Abhydrolase domain-containing protein 14B	ABHD14B	Q96IU4	22.345	1.22E-23	4.84E+07	1.66E+05	9.39E+04	6.99E+04
Neurotrophic tyrosine kinase, receptor-related 1	NTRKR1	Q01973	104.28	1.69E-61	4.82E+07	1.13E+05	9.07E+04	1.22E+05
Peptide O-xylosyltransferase 1	XT1	Q86Y38	107.57	2.60E-16	4.81E+07	1.12E+05	2.21E+05	1.55E+05
cDNA FLJ32696 fis, clone TESTI2000358	IST1	A8KAH5	41.565	1.04E-27	4.76E+07	1.43E+05	2.94E+05	1.38E+05
Neurosecretory protein VGF	VGF	O15240	67.257	1.12E-13	4.75E+07	1.33E+05	1.31E+05	1.30E+05
Transmembrane protein 149	TMEM149	Q9H665	37.894	6.22E-13	4.73E+07	1.12E+05	1.64E+05	1.67E+05
Ephrin type-B receptor 4	EPHB4	P54760	108.27	4.63E-56	4.73E+07	1.79E+05	1.56E+05	2.19E+05
Ig kappa chain V-I region Scw		P01609	11.764	3.20E-278	4.72E+07	2.40E+05	6.77E+04	1.10E+05
Complement component C6	C6	P13671	104.79	1.15E-12	4.72E+07	2.45E+05	1.24E+05	2.83E+05
p75	TNFBFR	P20333	48.291	8.89E-79	4.70E+07	1.13E+05	1.56E+05	1.69E+05
Receptor expressed in lymphoid tissues	RELT	Q969Z4	46.091	1.04E-30	4.70E+07	9.98E+04	2.00E+05	9.74E+04
Epidermal growth factor-like protein 9	DLK2	Q6UY11	40.547	1.23E-32	4.66E+07	1.47E+05	1.29E+05	1.68E+05
Ig kappa chain V-I region EU		P01598	11.788	3.35E-62	4.66E+07	2.43E+05	1.33E+05	1.25E+05
Intestinal trefoil factor	ITF	E9PBB5	10.181	9.95E-11	4.60E+07	2.11E+05	1.17E+05	9.32E+04
26S protease regulatory subunit 8	PSMC5	P62195	45.626	1.02E-03	4.56E+07	7.11E+04	1.60E+05	9.94E+04
Toll-like receptor adapter molecule 2 (TICAM-2) (Putative NF-kappa-B-activating protein 502).	hCG_37564	Q6JUT2	46.172	7.32E-18	4.49E+07	1.98E+05	1.46E+05	1.80E+05

Monocyte activation antigen Mo3	MO3	Q03405	36.978	7.91E-48	4.49E+07	1.24E+05	1.96E+05	1.07E+05
Ig lambda chain V-III region SH		P01714	11.392	2.62E-30	4.39E+07	1.88E+05	1.52E+05	1.40E+05
I-beta-1,3-N-acetylglucosaminyltransferase	B3GNT1	O43505	47.119	2.36E-25	4.35E+07	1.02E+05	1.12E+05	7.16E+04
Hemicentin-2	HMCN2	Q8NDA2	542.49	2.44E-09	4.33E+07	1.45E+05	1.29E+05	2.39E+05
Extracellular glutathione peroxidase	GPX3	P22352	25.57	1.14E-19	4.32E+07	1.23E+05	1.85E+05	2.11E+05
Contactin-1	CNTN1	Q12860	113.32	1.58E-33	4.26E+07	1.01E+05	1.47E+05	8.02E+04
Betaine--homocysteine S-methyltransferase I	BHMT	Q93088	44.998	1.24E-153	4.25E+07	6.93E+04	5.45E+05	1.61E+05
Pappalysin-2	PAPPA2	Q9BXP8	198.54	1.12E-21	4.24E+07	1.46E+05	1.42E+05	7.67E+04
14-3-3 protein zeta/delta	YWHAZ	E7EX29	28.036	3.45E-54	4.22E+07	1.19E+05	2.23E+05	8.96E+04
Brain-enriched hyaluronan-binding protein	BCAN	Q96GW7	99.117	6.34E-05	4.16E+07	1.02E+05	1.90E+05	1.34E+05
Apolipoprotein A4	APOA4	P06727	45.398	1.63E-56	4.13E+07	1.42E+05	5.53E+04	4.38E+05
Glucocorticoid-inducible protein 5	GIS5	Q9GZM7	52.387	3.04E-38	4.09E+07	1.07E+05	1.83E+05	2.42E+05
High endothelial venule protein	SPARCL1	Q14515	75.207	7.03E-90	4.08E+07	1.05E+05	2.58E+05	5.07E+04
Follistatin-like protein 1	FRP	Q12841	34.985	2.98E-31	4.06E+07	1.25E+05	1.55E+05	1.12E+05
UPF0624 protein C6orf186	C6orf186	Q5JXM2	41.33	2.11E-03	4.03E+07	2.31E+05	3.06E+04	0.00E+00
Kaliocin-1	LF	P02788	78.181	1.05E-225	4.01E+07	4.97E+04	3.29E+05	7.83E+05
Glutathione S-transferase P	FAEES3	P09211	23.356	3.32E-167	4.00E+07	1.81E+05	2.38E+05	7.75E+04
Alpha-1 type I collagen	COL1A1	P02452	138.94	6.41E-46	3.97E+07	1.97E+05	9.15E+04	1.59E+05
Aggrecan core protein	ACAN	E7EX88	261.33	1.75E-70	3.91E+07	6.03E+04	1.00E+05	1.55E+05
Actin-binding protein 280	FLN	P21333	280.74	1.79E-39	3.91E+07	1.78E+05	1.32E+05	1.09E+05
Alpha-2-macroglobulin receptor	A2MR	Q07954	504.6	8.94E-25	3.90E+07	6.17E+04	1.12E+05	1.15E+05
Gamma-glutamyltransferase 6	GGT6	Q6P531	50.509	7.02E-29	3.88E+07	1.44E+05	1.16E+05	9.77E+04
cDNA FLJ57265, highly similar to Neurotrimin	IGLON2	B7Z1Z5	39.209	1.79E-14	3.83E+07	1.35E+05	7.71E+04	1.34E+05
E3 ubiquitin-protein ligase RNF167	LP2254	Q9H6Y7	38.298	1.06E-06	3.82E+07	7.70E+04	2.72E+05	9.86E+04
Integrin-alpha FG-GAP repeat-containing protein 1	CDA08	Q8TB96	68.107	1.02E-64	3.81E+07	1.13E+05	1.07E+05	6.75E+04
Metallothionein-1X	MT1X	P80297	6.0683	8.87E-20	3.81E+07	9.25E+04	1.97E+05	1.40E+05
Anthrax toxin receptor 1	ANTXR1	Q9H6X2	62.788	1.59E-48	3.79E+07	1.79E+05	7.65E+04	1.69E+05
Immunoglobulin superfamily DCC subclass member 2	IGDCC2	Q92859	160.01	1.07E-40	3.78E+07	9.01E+04	8.37E+04	9.33E+04

Beta-hexosaminidase subunit alpha	HEXA	P06865	60.702	1.49E-16	3.78E+07	1.04E+05	9.83E+04	9.02E+04
Probable G-protein coupled receptor 116	GPR116	Q8IZF2	149.46	7.60E-17	3.70E+07	1.04E+05	5.54E+04	1.10E+05
76 kDa protein	PLBD2	Q8NHP8	65.471	1.78E-44	3.70E+07	7.81E+04	1.27E+05	1.71E+05
C-type lectin domain family 8 member A	CLEC8A	P78380	30.959	4.06E-66	3.69E+07	1.43E+05	1.78E+05	1.29E+05
Alpha-galactosidase B	NAGA	P17050	46.564	2.13E-17	3.67E+07	1.88E+05	1.19E+05	1.05E+05
Insulin-like growth factor-binding protein 2	BP2	P18065	34.814	1.59E-80	3.67E+07	7.53E+04	1.83E+05	1.32E+05
Ras-related protein Rab-5B	RAB5B	P61020	23.707	8.41E-05	3.61E+07	2.50E+05	1.93E+05	1.81E+05
Beta-glucan receptor	BGR	Q9BXN2	27.627	3.98E-57	3.58E+07	8.73E+04	1.45E+05	2.13E+05
Lubricin	MSF	Q92954	151.08	2.83E-07	3.57E+07	8.25E+04	4.71E+04	9.10E+04
Endothelial cell-selective adhesion molecule	ESAM	Q96AP7	41.176	2.16E-28	3.57E+07	1.37E+05	2.16E+04	8.82E+04
Cadherin-14	CDH14	P55291	88.915	1.61E-36	3.55E+07	1.76E+05	1.51E+05	7.83E+04
D-fructose-1,6-bisphosphate 1-phosphohydrolase 1	FBP	P09467	36.842	1.18E-61	3.50E+07	1.46E+05	2.01E+05	7.16E+04
Fetal antigen 1	DLK	P80370	41.3	4.57E-16	3.49E+07	7.36E+04	1.87E+05	2.97E+05
Neurotrophic tyrosine kinase, receptor-related 2	NTRKR2	Q01974	104.76	4.25E-20	3.48E+07	8.07E+04	6.18E+04	8.00E+04
Carboxypeptidase Z	CPZ	Q66K79	73.655	1.22E-08	3.44E+07	6.75E+04	8.50E+04	1.52E+05
Complement factor H-related protein 2	CFHL2	P36980	30.65	1.70E-120	3.43E+07	1.48E+05	8.93E+04	1.32E+05
14-3-3 protein epsilon	YWHAE	P62258	29.174	2.77E-16	3.42E+07	1.18E+05	2.65E+05	7.95E+04
Antileukoproteinase	SLPI	P03973	14.326	8.23E-14	3.40E+07	8.95E+04	7.75E+04	1.32E+05
Alpha-2-antiplasmin	AAP	P08697	54.565	8.61E-23	3.36E+07	1.32E+05	1.58E+05	1.20E+05
Chondroitinsulfatase	GALNS	P34059	58.025	2.50E-19	3.35E+07	1.78E+05	1.46E+05	9.25E+04
Intercellular adhesion molecule 1	ICAM1	P05362	57.825	1.12E-24	3.33E+07	8.04E+04	6.76E+04	7.33E+04
Ig kappa chain V-I region AU		P01594	11.939	3.22E-232	3.33E+07	1.76E+05	5.26E+04	7.46E+04
Ecto-ADP-ribosyltransferase 3	ART3	Q13508	43.923	1.25E-16	3.32E+07	1.40E+05	1.32E+05	2.07E+05
Ephrin type-B receptor 6	EPHB6	O15197	110.7	1.30E-24	3.31E+07	1.35E+05	9.07E+04	6.33E+04
Prothymosin alpha	PTMA	P06454	12.203	5.21E-60	3.26E+07	1.16E+05	1.51E+05	1.19E+05
CNDP dipeptidase 2	CN2	Q96KP4	52.878	1.92E-14	3.21E+07	1.04E+05	2.45E+05	8.54E+04
Cadherin-19	CDH19	Q96JQ0	346.18	3.44E-08	3.21E+07	9.77E+04	8.07E+04	5.91E+04
Butyrophilin B7-DC	B7DC	Q9BQ51	30.957	5.15E-21	3.21E+07	1.31E+05	9.22E+04	1.11E+05
Protocadherin-12	PCDH12	Q9NPG4	128.99	8.88E-44	3.19E+07	1.71E+05	7.30E+04	6.76E+04
Phosphatidylethanolamine-binding protein 4	CORK1	Q96S96	25.733	6.33E-08	3.13E+07	9.74E+04	9.70E+04	1.40E+05
Laminin subunit alpha-5	KIAA0533	O15230	399.73	2.02E-152	3.05E+07	8.03E+04	1.00E+05	6.42E+04
Beta-G1	GUSB	P08236	74.731	1.25E-31	3.02E+07	2.70E+05	0.00E+00	1.34E+04

		E9PC04	53.146	6.54E-19	3.01E+07	1.63E+05	8.56E+04	1.05E+05
Filamin B	FLNB	B2ZZ83	281.63	8.53E-16	2.99E+07	7.04E+04	5.80E+04	1.71E+05
Kallikrein inhibitor	KST	P29622	48.541	3.23E-24	2.98E+07	4.61E+04	3.03E+04	5.03E+04
AIG2-like domain-containing protein 1	A2LD1	Q9BVM4	17.328	1.08E-33	2.96E+07	1.11E+05	1.66E+05	6.08E+04
E48 antigen	E48	Q14210	13.286	5.39E-09	2.94E+07	5.13E+04	6.81E+04	2.47E+04
Carcinoembryonic antigen CGM6	CEACAM8	P31997	38.153	1.78E-30	2.94E+07	1.12E+05	5.13E+04	4.14E+04
Cathepsin H	CPSB	P09668	37.393	5.65E-17	2.85E+07	4.73E+04	8.15E+04	6.96E+04
CCP module-containing protein 22	C9orf13	Q4LDE5	390.17	1.22E-03	2.84E+07	0.00E+00	0.00E+00	1.24E+05
Herpes virus entry mediator C	HVEC	Q15223	57.157	1.17E-10	2.84E+07	5.02E+04	2.06E+04	8.87E+04
Lymphocyte function-associated antigen 3	CD58	P19256	28.147	1.31E-40	2.80E+07	4.42E+04	7.51E+04	1.05E+05
Glypican-3	GPC3	P51654	65.562	5.14E-16	2.79E+07	1.07E+05	7.16E+04	3.95E+04
Heat shock 70 kDa protein 8	HSC70	P11142	70.897	2.65E-59	2.78E+07	1.10E+05	1.94E+05	8.45E+04
C2-PI3K	PIK3C2B	O00750	184.77	4.53E-04	2.71E+07	0.00E+00	0.00E+00	7.64E+04
Cell migration-inducing gene 10 protein	MIG10	P00558	44.614	1.98E-66	2.70E+07	1.10E+05	7.03E+04	4.26E+04
Calcium-independent phospholipase A2-gamma	BM-043	Q9NP80	88.476	9.78E-04	2.69E+07	7.36E+04	2.25E+04	9.95E+04
Superoxide dismutase [Cu-Zn]	SOD1	P00441	15.936	3.28E-22	2.67E+07	7.65E+04	2.76E+04	8.35E+04
Basic fibroblast growth factor receptor 1	FGFR	P11362-2	91.667	3.13E-09	2.66E+07	1.47E+05	3.38E+04	5.85E+04
Collagen alpha-1(XIV) chain	COL14A1	Q05707	193.51	2.27E-57	2.65E+07	1.07E+05	1.68E+05	2.18E+05
Ras-related protein Rab-14	RAB14	P61106	23.897	1.13E-14	2.65E+07	1.09E+05	1.20E+05	1.12E+05
Interleukin-1 receptor 3	C3orf13	Q9NPH3-5	78.602	8.24E-16	2.64E+07	1.60E+05	5.05E+04	8.37E+04
Inositol 1,3,4-trisphosphate 5/6-kinase	ITPK1	Q13572	45.621	1.89E-03	2.63E+07	6.57E+04	4.82E+04	0.00E+00
Beta-hexosaminidase subunit beta	HCC7	P07686	63.111	1.33E-15	2.58E+07	4.62E+04	1.12E+05	7.21E+04
Kin of irregular chiasm-like protein 1	KIRREL	Q96J84-2	85.048	1.15E-47	2.57E+07	6.99E+04	1.02E+05	1.26E+05
Uncharacterized protein C6orf72	C6orf72	Q9NU53	36.84	3.57E-13	2.51E+07	1.08E+05	9.04E+04	5.64E+04
Acyl-CoA-binding protein	DBI	P07108	10.044	1.80E-58	2.50E+07	1.10E+05	1.80E+05	1.57E+05
Cell proliferation-inducing gene 35 protein	PEDF	P36955	46.312	1.21E-116	2.50E+07	5.77E+04	1.01E+05	6.69E+04
Canstatin	COL4A2	E7EPD1	168.04	1.46E-13	2.49E+07	8.22E+04	7.44E+04	1.14E+05
Hyaluronidase-1	HYAL1	Q12794	48.368	3.48E-26	2.48E+07	1.33E+05	9.71E+04	4.33E+04

14.5 kDa translational inhibitor protein	HRSP12	P52758	14.494	2.49E-31	2.47E+07	1.50E+05	8.62E+04	5.18E+04
CCB peptide	CHGB	P05060	78.275	4.21E-09	2.46E+07	8.35E+04	8.27E+04	5.73E+04
Ig heavy chain V-III region WEA		P01763	12.141	3.72E-36	2.46E+07	1.16E+05	1.20E+05	8.02E+04
EF-hand domain-containing protein KIAA0494	KIAA0494	O75071	55.031	1.09E-14	2.45E+07	1.12E+05	8.52E+04	7.22E+04
Actin, cytoplasmic 2	ACTB	P63261	41.792	0.00E+00	2.42E+07	7.58E+04	1.47E+05	1.44E+05
AL-11	CHGA	P10645	50.688	8.69E-12	2.42E+07	5.31E+04	2.57E+04	3.13E+04
Natural killer cell-enhancing factor A	PAGA	Q06830	22.11	2.70E-17	2.40E+07	1.30E+05	1.10E+05	2.31E+04
Cytovillin	EZR	P15311	69.412	2.86E-28	2.38E+07	1.36E+05	7.72E+04	8.27E+04
CALNUC	NUC	Q02818	53.879	7.67E-16	2.37E+07	7.11E+04	9.33E+04	5.44E+04
Ig kappa chain V-III region Ti		P01622	11.788	2.32E-216	2.32E+07	7.44E+04	6.32E+04	1.14E+05
Deubiquitinating enzyme 16	MSTP039	Q9Y5T5-3	91.869	1.00E-03	2.29E+07	4.26E+04	3.41E+04	1.70E+05
Alpha-trypsin chain 1	PRSS1	E7EQ64	28.123	1.29E-12	2.23E+07	4.94E+04	2.18E+05	1.11E+05
Aldehyde dehydrogenase family 1 member A1	ALDC	P00352	54.861	3.09E-15	2.22E+07	1.12E+05	9.83E+04	4.44E+04
Calgranulin-B	CAGB	P06702	13.242	4.93E-08	2.19E+07	1.81E+05	2.04E+04	2.70E+04
		G3V3Y2	9.9002	0.00E+00	2.19E+07	5.97E+04	2.47E+04	8.41E+04
Ig kappa chain V-IV region JI	IGKV4-1	P06313	14.632	5.51E-170	2.18E+07	1.06E+05	6.14E+04	5.90E+04
Cadherin-6	CDH6	P55285	88.308	9.74E-18	2.17E+07	1.18E+05	3.74E+04	1.35E+05
Protein FAM151A	C1orf179	Q8WW52	64.027	1.85E-06	2.17E+07	7.91E+04	9.61E+04	6.41E+04
56 kDa autoantigen	ANX11	P50995	54.389	6.09E-28	2.16E+07	9.62E+04	1.05E+05	1.80E+05
CSC-21K	TIMP2	P16035	24.399	1.80E-24	2.14E+07	3.02E+04	6.60E+04	5.45E+04
p160 ROCK-1	ROCK1	Q13464	158.17	2.55E-03	2.14E+07	7.29E+03	0.00E+00	0.00E+00
ADAMTS-like protein 4	ADAMTSL4	F8WAD0	118.82	2.98E-10	2.12E+07	4.69E+04	8.80E+04	6.35E+04
Carom	FCHSD2	E9PG19	86.813	2.27E-04	2.11E+07	1.10E+05	1.11E+05	1.31E+05
MOCO1-A	MOCO1	O96033	9.7552	7.14E-09	2.09E+07	8.15E+04	1.07E+05	3.30E+04
Fibroblast growth factor receptor 2	BEK	P21802-11	92.732	1.53E-15	2.08E+07	6.43E+04	1.12E+05	3.02E+04
14 kDa phosphohistidine phosphatase	CGI-202	Q9NRX4	13.832	3.41E-25	2.04E+07	4.76E+04	7.98E+04	1.05E+05
Histidine-proline-rich glycoprotein	HRG	P04196	59.578	1.04E-84	2.02E+07	6.47E+04	6.20E+04	5.74E+04
Complement factor H	CFH	P08603	139.09	5.38E-86	2.01E+07	4.80E+04	4.46E+04	1.27E+05
Glutathione S-transferase Mu 3	GST5	P21266	26.559	1.75E-25	2.00E+07	8.94E+04	5.84E+04	1.87E+04
Erythroid-potentiating activity	CLGI	P01033	23.171	3.70E-32	2.00E+07	8.14E+04	4.56E+04	2.95E+04
Ig heavy chain V-I region V35		P23083	13.009	1.06E-05	1.94E+07	8.38E+04	2.21E+04	1.65E+04
Glutaredoxin-1	GLRX	P35754	11.776	4.33E-11	1.94E+07	6.12E+04	6.14E+04	3.88E+04
Hemofiltrate peptide HF6478	SPINK5	Q9NQ38-3	124.08	1.79E-15	1.93E+07	8.91E+04	0.00E+00	2.29E+04
67 kDa cytokeratin	KRT1	P04264	66.017	1.13E-178	1.93E+07	0.00E+00	1.94E+05	2.36E+05

RAR-responsive protein TIG1	RARRES1	P49788	33.285	2.29E-28	1.92E+07	1.25E+05	2.34E+04	7.85E+03
Cholesteryl ester transfer protein	CETP	P11597	54.756	4.42E-20	1.90E+07	2.48E+04	0.00E+00	4.56E+04
Glypican-1	GPC1	P35052	61.68	2.87E-25	1.85E+07	7.26E+04	5.66E+04	3.15E+04
Cadherin-related family member 5	CDHR5	Q9HBB8	88.222	9.05E-66	1.82E+07	4.28E+04	1.42E+05	8.70E+04
Apolipoprotein M	APOM	O95445	21.253	1.49E-06	1.81E+07	7.18E+04	6.11E+04	3.87E+04
Cyclophilin B	CYPB	P23284	23.742	3.49E-16	1.79E+07	8.66E+04	5.58E+04	4.85E+03
4F2 cell-surface antigen heavy chain	MDU1	P08195-4	71.122	4.45E-29	1.75E+07	6.75E+04	6.29E+04	3.63E+04
Glutathione S-transferase A2	GST2	P09210	25.664	1.44E-18	1.74E+07	9.05E+04	1.08E+05	2.80E+04
Uncharacterized protein C10orf47	C10orf47	Q86WR7	45.801	5.88E-04	1.74E+07	6.69E+04	8.04E+04	2.07E+04
Epidermal growth factor-like protein 4	C19orf49	Q7Z7M0	303.1	3.25E-23	1.72E+07	4.73E+04	1.14E+05	6.34E+04
CD209 antigen	CD209	Q9NNX6	45.774	1.15E-100	1.70E+07	7.59E+04	2.64E+04	4.83E+04
Lymphocyte antigen 6H	LY6H	O94772	14.669	5.43E-09	1.66E+07	7.30E+04	5.67E+04	9.90E+04
Cytokeratin-10	KPP	P13645	59.51	6.40E-79	1.66E+07	0.00E+00	1.12E+05	2.93E+05
Atriopeptidase	EPN	P08473	85.513	4.26E-37	1.63E+07	6.10E+04	9.31E+04	7.75E+04
CD62 antigen-like family member L	LNHR	P14151	42.187	6.41E-29	1.62E+07	3.66E+04	6.02E+03	4.07E+04
Frizzled protein, human endometrium	FRPHE	Q6FHJ7	39.826	5.39E-14	1.57E+07	2.64E+04	5.82E+04	7.00E+04
Histone H1.4	H1F4	P10412	21.865	4.03E-16	1.56E+07	1.53E+04	1.91E+04	2.35E+04
Alpha-2-macroglobulin	A2M	P01023	163.29	1.94E-39	1.53E+07	2.36E+04	1.46E+05	6.53E+04
cDNA FLJ54854, highly similar to Junctional adhesion molecule A	F11R	B7Z5W1	32.858	9.28E-06	1.53E+07	1.05E+04	3.13E+04	3.03E+04
CD177 antigen	CD177	Q8N6Q3	46.363	1.23E-08	1.52E+07	2.07E+04	5.95E+04	8.55E+04
Laminin subunit alpha-4	LAMA4	Q16363	202.52	1.85E-08	1.48E+07	5.31E+04	3.84E+04	6.48E+04
EPH-related receptor tyrosine kinase ligand 1	EFNA1	P20827	23.787	6.95E-10	1.47E+07	3.21E+04	4.65E+04	4.02E+04
Putative uncharacterized protein BST1	BST1	A6NC48	37.482	1.27E-10	1.47E+07	7.76E+04	8.20E+03	1.06E+04
BLAST-2	CD23A	P06734	36.468	2.84E-15	1.46E+07	2.49E+04	1.92E+04	4.69E+04
Carbonate dehydratase I	CA1	P00915	28.87	2.90E-28	1.46E+07	1.43E+05	2.02E+04	7.96E+04
Semenogelin II	SEMG2	Q02383	65.444	2.65E-35	1.46E+07	0.00E+00	6.13E+04	1.46E+05
EPH-like kinase 2	EPHB3	P54753	110.33	1.62E-19	1.45E+07	7.13E+04	7.39E+04	5.28E+04
Putative uncharacterized protein C16orf89	C16orf89	C9JNB3	48.819	1.01E-29	1.42E+07	3.15E+04	3.42E+04	5.90E+04
Putative uncharacterized protein FGG	FGG	C9JC84	52.337	3.59E-130	1.39E+07	0.00E+00	0.00E+00	7.97E+03
CD300 antigen-like family member F	CD300F	E7EME0	33.797	2.12E-34	1.38E+07	8.02E+04	2.98E+04	7.05E+04
Neuroserpin	PII2	Q99574	46.426	1.31E-15	1.37E+07	5.67E+04	9.82E+04	4.42E+04

Receptor-type tyrosine-protein phosphatase S	PTPRS	E9PDC5	217.23	5.87E-12	1.35E+07	8.58E+04	7.50E+04	4.83E+04
Coactosin-like protein	CLP	Q14019	15.945	1.71E-19	1.31E+07	3.68E+04	5.50E+04	1.41E+04
Cytokine receptor class-II member 4	CRFB4	Q08334	36.995	6.22E-13	1.29E+07	1.88E+04	3.00E+04	4.80E+04
230 kDa bullous pemphigoid antigen	BPAG1	E9PEB9	880.55	1.25E-03	1.29E+07	2.73E+04	1.55E+04	4.59E+04
		F8VX91	12.491	4.99E-45	1.28E+07	3.04E+04	4.56E+03	2.58E+04
Phosphatidylinositol-4-phosphate 3-kinase C2 domain-containing subunit alpha	PIK3C2A	O00443	190.68	3.73E-05	1.27E+07	0.00E+00	0.00E+00	4.99E+04
Endoplasmic reticulum resident protein 46	TLP46	Q8NBS9	47.628	8.59E-12	1.24E+07	3.67E+04	5.28E+04	3.13E+04
Frizzled-7	FZD7	O75084	63.619	4.62E-05	1.23E+07	3.99E+04	4.25E+04	2.05E+04
Multiple epidermal growth factor-like domains protein 5	KIAA0814	O75094	167.71	2.33E-03	1.22E+07	0.00E+00	0.00E+00	3.50E+04
ALG-2-interacting protein 1	AIP1	E9PFU1	96.771	6.21E-65	1.22E+07	3.67E+04	8.67E+04	1.03E+05
Connectin	TTN	Q8WZ42-8	3829.8	7.26E-14	1.22E+07	4.66E+04	4.78E+04	8.97E+04
		E7ETN3	124.02	4.70E-99	1.21E+07	5.47E+03	1.83E+04	1.05E+05
18 kDa cationic antimicrobial protein	CAMP	P49913	19.301	6.49E-08	1.19E+07	2.27E+04	6.85E+04	8.05E+04
Fibrinogen beta chain	FGB	P02675	55.928	8.78E-90	1.16E+07	0.00E+00	0.00E+00	0.00E+00
Inter-alpha-trypsin inhibitor complex component II	IGHEP2	P19823	106.46	3.99E-33	1.14E+07	0.00E+00	1.91E+04	0.00E+00
Interleukin-25	C19orf10	Q969H8	18.795	2.01E-15	1.12E+07	8.33E+04	2.39E+04	4.31E+04
GTP cyclohydrolase 1 feedback regulatory protein	GCHFR	P30047	9.6981	2.24E-06	1.12E+07	2.89E+04	7.46E+04	3.64E+04
DNA polymerase-transactivated protein 2	DNAPT2	Q8NC42	43.164	4.47E-08	1.09E+07	1.43E+04	2.02E+04	2.23E+04
BMP and activin membrane-bound inhibitor homolog	BAMBI	Q13145	29.107	1.92E-14	1.09E+07	0.00E+00	4.25E+04	2.82E+04
RING finger protein 13	RNF13	O43567	42.813	1.10E-05	1.09E+07	4.39E+04	1.64E+04	5.75E+04
Leu-enkephalin	PENK	P01210	30.787	2.50E-30	1.07E+07	8.68E+04	1.96E+04	2.93E+04
7,8-dihydro-8-oxoguanine triphosphatase	MTH1	P36639	22.519	3.21E-07	1.06E+07	5.71E+04	2.92E+04	2.32E+04
1-Cys peroxiredoxin	AOP2	P30041	25.035	3.68E-11	1.04E+07	7.32E+04	7.86E+03	0.00E+00
Growth/differentiation factor 15	GDF15	Q99988	34.14	3.41E-13	1.03E+07	4.59E+04	4.92E+04	8.77E+03
Metallothionein-0	MT1H	P80294	6.0393	1.43E-12	1.03E+07	6.20E+03	5.64E+04	2.87E+04
N-sulphoglucosamine sulphohydrolase	HSS	P51688	56.695	2.98E-19	1.02E+07	1.51E+04	0.00E+00	8.54E+04
Collagen alpha-1(XVIII) chain	COL18A1	F5GZA2	178.19	3.34E-31	1.01E+07	1.28E+04	2.63E+04	2.96E+04

Cytokeratin-28	KRT25D	Q7Z3Y7	53.025	1.56E-08	9.95E+06	0.00E+00	0.00E+00	1.07E+05
Alcohol dehydrogenase [NADP+]	AKR1A1	P14550	36.573	4.39E-16	9.87E+06	2.38E+04	7.75E+04	3.41E+04
Chondrolectin	C21orf68	Q9H9P2	30.43	6.12E-12	9.72E+06	2.75E+04	0.00E+00	2.84E+04
Collectrin	TMEM27	Q9HBJ8	25.235	1.70E-11	9.68E+06	4.03E+04	2.07E+04	3.68E+04
Cytokine-like protein 2-21	C21orf11	P58499-2	30.383	1.46E-18	9.59E+06	2.07E+04	1.37E+04	0.00E+00
Ig kappa chain V-I region Ka		P01603	11.285	3.39E-04	9.37E+06	1.14E+04	4.79E+04	2.95E+04
Leukocyte-associated immunoglobulin-like receptor 2	CD306	Q6ISS4	16.28	5.07E-20	9.37E+06	2.04E+04	3.30E+04	0.00E+00
Junctional sarcoplasmic reticulum protein 1	JP45	Q96MG2	36.318	5.89E-04	8.96E+06	3.62E+04	8.08E+03	4.99E+03
Signal peptide, CUB domain, EGF-like 1	SCUBE1	B1AH90	37.306	4.48E-16	8.92E+06	5.33E+04	5.67E+04	6.76E+03
CD167 antigen-like family member A	CAK	Q08345-5	101.8	1.26E-09	8.91E+06	2.83E+04	2.68E+04	2.09E+03
Glycerol-3-phosphate dehydrogenase [NAD+], cytoplasmic	GPD1	P21695	37.567	1.73E-30	8.76E+06	4.87E+04	3.25E+04	1.59E+04
Cyclic AMP-responsive element-binding protein 3-like protein 3	CREB3L3	Q68CJ9	49.077	8.14E-05	8.68E+06	5.66E+04	0.00E+00	0.00E+00
Protein Z39Ig	CRIG	Q9Y279	43.987	7.06E-09	8.68E+06	2.52E+04	3.58E+04	1.76E+04
gp67	CD33	P20138	39.825	8.80E-11	8.64E+06	2.87E+04	2.53E+04	1.82E+04
Cytosolic thyroid hormone-binding protein	OIP3	P14618	57.936	4.22E-31	8.40E+06	1.45E+04	3.97E+04	4.46E+04
Glycosylation-inhibiting factor	GLIF	P14174	12.476	1.49E-12	8.34E+06	3.98E+04	6.16E+04	2.75E+04
C219-reactive peptide	KIAA0268	Q5JRA6	213.7	2.87E-09	8.23E+06	2.35E+04	2.55E+04	3.24E+04
Calgranulin-A	CAGA	P05109	10.834	6.27E-10	8.22E+06	6.37E+04	2.79E+04	0.00E+00
AXL receptor tyrosine kinase ligand	AXLLG	Q14393	79.676	1.59E-10	8.21E+06	2.83E+04	8.47E+03	8.84E+03
80K-H protein	G19P1	E7EQZ9	60.192	8.00E-08	8.09E+06	4.83E+03	3.25E+04	1.98E+04
Low-density lipoprotein receptor relative with 11 ligand-binding repeats	C11orf32	Q92673	248.42	2.08E-16	8.06E+06	1.61E+04	3.98E+04	4.03E+04
Heat shock 86 kDa	HSP90A	P07900-2	98.16	4.55E-28	7.84E+06	1.85E+04	7.91E+04	2.01E+04
Glypican-4	GPC4	O75487	62.411	1.27E-10	7.80E+06	2.71E+04	8.69E+03	0.00E+00
Ceroid-lipofuscinosis neuronal protein 5	CLN5	O75503	41.496	5.82E-06	7.74E+06	2.53E+04	2.59E+04	0.00E+00
300 kDa mannose 6-phosphate receptor	IGF2R	P11717	274.37	2.92E-12	7.69E+06	3.16E+03	4.57E+04	6.08E+04
von Willebrand antigen 2	F8VWF	P04275	309.26	4.82E-10	7.64E+06	3.41E+04	4.00E+04	3.65E+04
Integral membrane protein GPR180	GPR180	Q86V85	49.395	7.40E-15	7.62E+06	2.66E+04	3.60E+04	1.77E+04

Aminoacylproline aminopeptidase	XPNPEP2	O43895	75.624	1.39E-20	7.57E+06	3.78E+04	6.15E+04	1.75E+04
Dystrophin	DMD	E9PDN5	426.02	1.99E-03	7.54E+06	2.93E+04	1.93E+04	3.03E+04
Alpha-inhibin-31	SEMG	P04279	52.13	4.50E-36	7.48E+06	0.00E+00	3.55E+04	6.10E+04
Cancer/testis antigen 19	IL13R	P78552	48.759	1.16E-07	7.48E+06	2.10E+04	3.00E+03	3.76E+04
Serine protease 10	PRSS10	F8WES1	57.69	1.07E-10	7.48E+06	1.99E+04	2.20E+04	2.51E+04
Hepcidin	HAMP	P81172	9.4081	4.06E-05	7.48E+06	3.29E+04	0.00E+00	8.28E+03
45 kDa calcium-binding protein	CAB45	Q9BRK5	41.806	8.42E-13	7.43E+06	3.40E+04	1.82E+04	8.68E+03
Inter-alpha-trypsin inhibitor complex component III	IGHEP1	P19827	101.39	2.55E-46	7.42E+06	2.31E+04	7.09E+03	1.11E+04
Ig kappa chain V-I region Wes		P01611	11.608	3.18E-08	7.35E+06	5.42E+04	0.00E+00	1.46E+04
Aspartate aminotransferase, cytoplasmic	GOT1	P17174	46.247	2.67E-05	7.14E+06	8.66E+03	2.56E+04	1.02E+04
Cadherin-19	CDH19	Q9H159	87.001	1.99E-08	7.09E+06	2.70E+04	2.93E+04	1.27E+04
Axonemal beta dynein heavy chain 3	DNAH3	Q8TD57	470.77	2.85E-03	6.79E+06	1.99E+04	6.27E+04	0.00E+00
Calbindin	CAB27	P05937	30.025	1.41E-13	6.75E+06	2.25E+04	5.90E+03	1.47E+04
Cadherin-3	CDH3	P22223	91.417	1.36E-15	6.70E+06	3.47E+04	1.86E+04	4.08E+04
78 kDa glucose-regulated protein	GRP78	P11021	72.332	2.04E-17	6.67E+06	8.61E+03	4.27E+04	2.19E+04
A disintegrin and metalloproteinase domain-like protein decysin-1	ADAMDEC1	O15204	52.775	3.38E-06	6.64E+06	6.49E+03	1.84E+04	0.00E+00
Protein S100-A7	PSOR1	P31151	11.471	1.12E-10	6.62E+06	1.29E+04	5.79E+04	1.66E+04
High-temperature requirement factor A3	HTRA3	P83110	48.607	8.89E-05	6.49E+06	2.47E+04	1.74E+04	0.00E+00
Aspartylglucosaminidase	AGA	P20933	37.208	3.00E-43	6.43E+06	8.26E+04	1.67E+03	4.70E+04
Bactericidal/permeability-increasing protein-like 1	BPIL1	Q8N4F0	49.172	3.70E-67	6.37E+06	4.07E+04	0.00E+00	0.00E+00
28 kDa heat shock protein	HSP27	P04792	22.782	6.09E-09	6.31E+06	1.80E+04	6.77E+04	2.75E+03
Endothelial lectin HL-1	INTL	Q8WWA0	34.961	7.35E-17	6.12E+06	3.99E+04	4.07E+04	0.00E+00
Cell migration-inducing gene 5 protein	MIG5	P63000-2	23.467	4.60E-07	6.09E+06	1.76E+04	5.14E+04	3.28E+04
22 kDa pancormulin	SPRC	Q9UBC9	18.154	5.80E-23	6.03E+06	5.32E+03	7.46E+04	0.00E+00
1-phosphatidylinositol-4,5-bisphosphate phosphodiesterase epsilon-1	KIAA1516	Q9P212-2	223.87	3.90E-04	5.99E+06	1.15E+04	1.49E+04	0.00E+00
Histone H4	H4/A	P62805	11.367	2.67E-28	5.96E+06	0.00E+00	6.60E+04	4.12E+04
CD300 antigen-like family member E	CD300E	Q496F6	22.918	4.08E-08	5.91E+06	1.32E+04	3.15E+04	3.61E+04
Heat shock 70 kDa protein 1/2	HSPA1	P08107	70.051	1.21E-17	5.79E+06	1.71E+04	3.61E+04	1.37E+04
Histone H1.2	H1F2	P16403	21.364	6.39E-12	5.73E+06	0.00E+00	1.12E+04	7.67E+03

Fibulin-7	FBLN7	Q53RD9	47.375	7.69E-05	5.70E+06	5.73E+03	2.52E+04	3.42E+03
Bone sialoprotein 1	BNSP	P10451-3	32.355	0.00E+00	5.63E+06	9.31E+03	1.09E+04	1.05E+04
Autotaxin	ATX	Q13822-2	105.2	2.20E-11	5.60E+06	2.66E+04	0.00E+00	2.12E+04
GPI-anchored metastasis-associated protein C4.4A homolog	C4.4A	O95274	35.97	1.36E-08	5.49E+06	1.11E+04	2.24E+04	2.93E+04
Prominin-2	PROM2	Q8N271	91.882	2.51E-07	5.43E+06	1.44E+04	4.98E+03	1.89E+04
Ig kappa chain V-I region Ni		P01613	11.745	3.14E-135	5.40E+06	3.54E+04	6.52E+03	1.26E+04
Ezrin-radixin-moesin-binding phosphoprotein 50	NHERF	O14745	38.868	2.60E-08	5.37E+06	5.31E+04	1.06E+04	0.00E+00
CD160 antigen	BY55	O95971	19.81	1.73E-07	5.36E+06	2.50E+03	9.62E+03	1.25E+04
Layilin	LAYN	Q6UX15	43.108	1.47E-05	5.30E+06	4.41E+03	5.59E+03	1.07E+04
Profilin I	PFN1	P07737	15.054	2.10E-10	5.27E+06	1.58E+04	6.03E+03	2.73E+04
Signal-regulatory protein beta-1 isoform 3	SIRPB1	Q5TFQ8	43.359	1.36E-57	5.21E+06	7.67E+03	0.00E+00	1.35E+04
Elongation factor 1-alpha 2	EEF1A2	Q05639	50.47	8.55E-06	5.18E+06	2.28E+04	2.07E+04	0.00E+00
Plexin domain-containing protein 2	PLXDC2	Q6UX71	59.582	1.16E-05	5.03E+06	1.36E+04	4.17E+03	9.15E+03
Asialoglycoprotein receptor 2	ASGR2	P07307	35.092	4.46E-04	4.99E+06	9.75E+03	1.40E+04	1.59E+04
Cytosolic malate dehydrogenase	MDH1	F5H098	38.627	2.02E-47	4.93E+06	1.53E+04	5.36E+04	3.00E+04
G-protein coupled receptor 56	GPR56	Q9Y653	77.737	6.96E-08	4.93E+06	8.79E+03	5.86E+03	5.55E+03
		D6RAK8	55.076	0.00E+00	4.81E+06	2.80E+04	3.30E+04	5.28E+04
Beta-mannosidase	MANB1	O00462	100.89	1.77E-13	4.80E+06	0.00E+00	2.26E+04	1.14E+04
Cystatin-A	CSTA	P01040	11.006	1.44E-16	4.75E+06	3.52E+04	0.00E+00	6.06E+03
RAR-responsive protein TIG2	RARRES2	Q99969	18.617	1.07E-08	4.72E+06	2.89E+04	0.00E+00	0.00E+00
CFR-1	CFR1	Q92896-2	137.22	1.85E-51	4.71E+06	0.00E+00	3.74E+04	2.16E+04
Low-density lipoprotein receptor	LDLR	P01130	95.375	2.08E-04	4.69E+06	3.21E+04	7.29E+03	0.00E+00
Aromatic-L-amino-acid decarboxylase	AADC	P20711	53.926	2.75E-32	4.69E+06	1.94E+04	4.44E+04	5.22E+03
Antigen CD42b-alpha	GP1BA	E7ES66	71.539	1.68E-07	4.68E+06	3.19E+04	0.00E+00	1.77E+04
B-CK	CKB	P12277	42.644	5.84E-05	4.57E+06	1.93E+04	2.10E+04	0.00E+00
IgLON family member 3	IGLON3	F5H5G1	39.704	4.63E-18	4.56E+06	1.46E+04	8.31E+03	2.24E+04
Amyloid protein homolog	APLP2	Q06481	86.955	5.71E-08	4.54E+06	0.00E+00	1.68E+04	0.00E+00
Glycine hydroxymethyltransferase	SHMT1	P34896	53.082	9.27E-10	4.50E+06	4.83E+03	5.78E+04	1.22E+04
CD5 antigen-like	API6	O43866	38.087	1.32E-05	4.49E+06	1.28E+04	7.36E+03	1.44E+04
Cadherin-16	CDH16	O75309	89.922	6.87E-05	4.45E+06	1.24E+04	0.00E+00	5.54E+03
Putative uncharacterized protein MEGF9	MEGF9	C9J1K8	67.312	4.47E-06	4.41E+06	6.40E+03	2.92E+04	3.75E+04
NSFL1 cofactor p47	NSFL1C	Q9UNZ2-5	40.816	7.40E-17	4.30E+06	1.67E+04	3.46E+04	0.00E+00

Putative uncharacterized protein CFHR4	CFHR4	C9J7J7	65.221	1.55E-05	4.26E+06	3.56E+04	0.00E+00	2.33E+04
Chondroitin sulfate proteoglycan core protein 2	CSPG2	P13611	372.82	2.02E-14	4.22E+06	1.62E+04	4.09E+04	2.73E+04
Alpha-L-fucosidase I	FUCA1	P04066	53.688	4.17E-09	4.15E+06	3.72E+04	1.87E+04	5.59E+03
Laminin B1 chain	LAMB1	G3XAI2	200.48	6.55E-13	4.14E+06	7.10E+03	5.40E+03	6.04E+03
3-hydroxybutyrate dehydrogenase type 2	BDH2	Q9BUT1	26.724	9.63E-43	4.09E+06	8.10E+03	4.06E+04	1.74E+04
ATL-derived factor	TRDX	P10599	11.737	7.45E-04	3.99E+06	2.02E+04	0.00E+00	0.00E+00
CD85 antigen-like family member K	ILT3	Q8NHJ6-3	49.396	3.84E-04	3.92E+06	9.50E+03	1.29E+04	0.00E+00
Placental ribonuclease inhibitor	PRI	P13489	49.973	2.83E-09	3.91E+06	7.64E+03	3.05E+04	0.00E+00
Hemoglobin scavenger receptor	CD163	Q86VB7-2	125.98	2.68E-06	3.82E+06	0.00E+00	8.99E+03	5.78E+03
Palmitoyl-protein hydrolase 1	PPT	E9PES1	37.131	1.79E-05	3.71E+06	1.40E+04	1.71E+04	0.00E+00
18 kDa phosphoprotein	CFL	E9PK25	22.728	9.26E-10	3.66E+06	1.84E+04	4.57E+03	0.00E+00
Aldehyde reductase	AKR1B1	P15121	35.853	7.84E-04	3.65E+06	0.00E+00	7.60E+04	0.00E+00
56 kDa selenium-binding protein	SBP	Q13228	52.39	1.81E-13	3.64E+06	1.35E+04	2.73E+04	0.00E+00
Argininosuccinate synthase	ASS	P00966	46.53	3.11E-10	3.63E+06	7.01E+03	2.01E+04	1.79E+04
Matrilysin	MMP7	P09237	29.676	7.13E-05	3.53E+06	1.19E+04	2.13E+04	3.15E+04
Dopamine-responsive gene 1 protein	C6orf55	Q9NP79	33.879	2.65E-06	3.52E+06	1.55E+03	5.78E+04	1.25E+04
Nicotinate-nucleotide pyrophosphorylase [carboxylating]	QPRT	Q15274	30.845	4.96E-08	3.47E+06	1.37E+04	2.36E+04	0.00E+00
Ig kappa chain V-I region Hau		P01600	11.671	6.89E-218	3.46E+06	1.43E+04	3.71E+04	5.17E+03
Ester hydrolase C11orf54	C11orf54	Q9H0W9	35.117	5.36E-07	3.45E+06	1.10E+04	3.36E+04	0.00E+00
Bumetanide-sensitive sodium-(potassium)-chloride cotransporter 2	NKCC2	E9PDW4	121.39	1.21E-10	3.39E+06	1.00E+04	2.85E+04	0.00E+00
Chloride channel ABP	CLIC1	O00299	26.922	2.75E-07	3.38E+06	2.16E+04	1.19E+04	2.64E+03
		G3V1N2	11.948	1.87E-10	3.26E+06	1.65E+04	1.06E+04	0.00E+00
Actin regulatory protein CAP-G	AFCP	P40121	38.498	2.86E-09	3.21E+06	1.87E+03	2.50E+04	2.54E+04
Ig kappa chain V-II region FR		P01615	12.059	5.61E-04	3.15E+06	0.00E+00	6.59E+04	0.00E+00
Sodium pump subunit alpha-1	ATP1A1	F5H3A1	113	2.24E-03	3.14E+06	6.26E+03	4.01E+03	6.36E+03
C-X-C motif chemokine 12	CXCL12	P48061-4	15.495	1.22E-04	3.12E+06	7.56E+03	8.00E+03	0.00E+00
ECM3 homolog	FREM2	Q5SZK8	351.15	3.81E-10	3.12E+06	3.84E+03	2.65E+03	4.28E+03
Heparin cofactor 2	HCF2	P05546	57.07	1.75E-10	3.10E+06	0.00E+00	0.00E+00	0.00E+00
BH3-interacting domain death agonist	BID	P55957-2	26.836	2.51E-14	3.07E+06	0.00E+00	8.02E+03	2.32E+03

Ig kappa chain V-I region Roy		P01608	11.782	3.37E-217	3.05E+06	1.66E+04	0.00E+00	0.00E+00
DRT	DRT	P29323	117.49	1.05E-11	3.01E+06	3.04E+03	2.81E+04	1.33E+04
Anionic trypsinogen	PRSS2	P07478	26.487	1.92E-16	2.99E+06	0.00E+00	0.00E+00	2.56E+03
Voltage-dependent calcium channel subunit alpha-2/delta-1	CACNA2D1	F8WC36	125.39	8.22E-07	2.96E+06	1.15E+03	6.79E+03	7.74E+03
Adipocyte adhesion molecule	ACAM	Q9H6B4	41.28	3.60E-04	2.94E+06	0.00E+00	0.00E+00	3.10E+04
C-type lectin domain family 5 member A	CLEC5A	Q9NY25	21.521	6.49E-05	2.94E+06	9.55E+03	2.44E+04	1.38E+04
Histone H1.5	H1F5	P16401	22.58	4.29E-07	2.93E+06	0.00E+00	0.00E+00	5.10E+03
Cytokeratin-13	KRT13	P13646-3	45.867	3.07E-18	2.92E+06	0.00E+00	1.15E+04	0.00E+00
Imidodipeptidase	PEPD	P12955	54.548	1.43E-07	2.85E+06	3.85E+03	5.84E+03	0.00E+00
Insulin-like growth factor-binding protein complex acid labile subunit	ALS	E9PGU3	70.235	2.28E-11	2.82E+06	6.07E+03	4.21E+03	8.44E+03
Sodium-dependent neutral amino acid transporter B(0)AT1	SLC6A19	Q695T7	71.109	3.71E-04	2.76E+06	2.92E+04	0.00E+00	0.00E+00
Charged multivesicular body protein 5	C9orf83	Q9NZZ3	24.57	4.32E-07	2.71E+06	4.75E+03	3.17E+04	0.00E+00
Protein jagged-1	JAG1	P78504	133.8	6.07E-06	2.71E+06	2.91E+03	0.00E+00	4.02E+03
Fibrinolyase	TGM4	P49221	77.144	4.26E-11	2.69E+06	0.00E+00	4.47E+04	0.00E+00
		F8WDK9	10.848	1.20E-03	2.68E+06	1.70E+04	4.05E+03	0.00E+00
Angiotensin-converting enzyme	ACE	P12821	149.71	7.41E-08	2.66E+06	0.00E+00	3.51E+04	1.12E+04
Ig heavy chain V-III region TUR		P01779	12.188	1.88E-222	2.65E+06	1.22E+04	4.42E+03	3.03E+03
Hair keratin, type I Ha1	Hka1	A2A5Y0	53.728	1.98E-07	2.65E+06	0.00E+00	2.39E+04	0.00E+00
1,4-beta-N-acetylmuramidase C	LYZ	P61626	16.537	5.51E-06	2.61E+06	0.00E+00	5.64E+03	0.00E+00
Charged multivesicular body protein 2a	BC2	O43633	25.104	2.27E-12	2.57E+06	4.48E+03	1.31E+04	0.00E+00
Cytokeratin-9	KRT9	P35527	62.129	2.57E-05	2.53E+06	0.00E+00	6.28E+04	0.00E+00
Collagen alpha-3(V) chain	COL5A3	P25940	172.12	8.16E-07	2.53E+06	9.21E+03	0.00E+00	2.65E+04
Leucine-rich repeat neuronal protein 4	C20orf75	Q8WUT4	78.842	1.22E-05	2.52E+06	1.24E+03	1.51E+04	0.00E+00
NRH dehydrogenase [quinone] 2	NMOR2	P16083	25.918	3.12E-06	2.51E+06	3.24E+03	3.99E+04	0.00E+00
15-hydroxyprostaglandin dehydrogenase [NADP+]	CBR	P16152	30.375	2.72E-10	2.51E+06	0.00E+00	2.66E+04	0.00E+00
CDw113	PRR3	Q9NQS3	61.002	6.30E-04	2.50E+06	0.00E+00	1.85E+04	2.29E+03
Desmuslin	DMN	O15061	172.77	6.82E-04	2.49E+06	0.00E+00	0.00E+00	4.58E+03
Complement component C9	C9	P02748	63.173	3.57E-07	2.45E+06	0.00E+00	9.65E+03	1.47E+04
Endoglin	END	P17813	70.577	1.19E-05	2.41E+06	1.82E+03	0.00E+00	1.15E+04
Caspase-14	CASP14	P31944	27.679	6.70E-09	2.40E+06	0.00E+00	1.79E+04	1.48E+04

C-type lectin domain family 13 member E	CLEC13E	Q9UBG0	166.67	6.61E-26	2.40E+06	0.00E+00	0.00E+00	0.00E+00
Carcinoembryonic antigen	CEA	P06731	76.794	5.39E-11	2.33E+06	4.74E+03	1.45E+04	2.75E+04
50 kDa dynein-associated polypeptide	DCTN2	F5H2S7	44.809	6.91E-04	2.29E+06	1.63E+04	1.22E+04	0.00E+00
Fc-gamma RIIB-beta	CD16B	O75015	26.216	1.06E-36	2.27E+06	2.86E+03	1.36E+04	2.74E+02
14 kDa thioredoxin-related protein	TXNDC17	Q9BRA2	13.941	9.22E-06	2.27E+06	0.00E+00	2.47E+04	8.56E+03
Natural killer cell-enhancing factor B	NKEFB	P32119	21.892	3.74E-07	2.19E+06	3.73E+03	1.06E+04	1.12E+04
Neural cell adhesion molecule 2	NCAM2	O15394	93.045	1.04E-05	2.17E+06	4.55E+03	0.00E+00	3.93E+03
Apyrase homolog	CANT1	Q8WVQ1	44.839	3.35E-08	2.16E+06	6.00E+03	1.26E+04	0.00E+00
		Q2KIS7	22.144	1.72E-146	2.14E+06	5.00E+03	0.00E+00	4.80E+03
Cytochrome c-releasing factor 21	C7orf24	O75223	21.007	9.41E-10	2.11E+06	0.00E+00	1.07E+04	0.00E+00
cDNA FLJ51269, highly similar to Aminopeptidase N (EC 3.4.11.2)		B4DP96	55.976	4.10E-171	2.10E+06	8.65E+03	1.25E+04	0.00E+00
Fibronectin-like domain-containing leucine-rich transmembrane protein 2	FLRT2	O43155	74.048	1.41E-03	2.04E+06	1.14E+04	7.87E+03	0.00E+00
Elafin	PI3	P19957	12.269	1.96E-07	2.02E+06	4.53E+03	2.36E+04	3.83E+03
9.5S alpha-1-glycoprotein	APCS	P02743	25.387	2.47E-08	2.00E+06	0.00E+00	5.68E+04	0.00E+00
Cell proliferation-inducing gene 46 protein	CYK18	P05783	48.057	1.30E-07	1.92E+06	0.00E+00	2.20E+04	0.00E+00
Neural cell adhesion molecule L1	CAML1	F5H025	140.16	9.79E-06	1.87E+06	5.55E+03	6.95E+03	2.82E+03
Aromatic esterase 1	PON	P27169	39.731	3.78E-08	1.82E+06	0.00E+00	0.00E+00	0.00E+00
35-beta calcimedien	ANX4	P09525	35.882	2.48E-05	1.81E+06	0.00E+00	2.47E+04	0.00E+00
BPG-dependent PGAM 1	CDABP0006	F2Z2J9	28.85	6.47E-07	1.79E+06	0.00E+00	3.33E+04	5.04E+03
Gamma-butyrobetaine dioxygenase	BBH	O75936	44.714	1.85E-03	1.77E+06	3.60E+03	2.33E+04	0.00E+00
Delta-globin	HBD	P02042	16.055	2.07E-61	1.73E+06	0.00E+00	0.00E+00	4.28E+04
Bone marrow serine protease	ELA2	P08246	28.518	7.76E-08	1.71E+06	0.00E+00	3.16E+04	0.00E+00
Cystatin-2	CST2	P09228	16.445	1.44E-09	1.69E+06	2.66E+04	1.49E+04	0.00E+00
Bw-45	HLAB	P30483	40.414	5.49E-05	1.68E+06	5.74E+03	0.00E+00	1.02E+04
Cortactin-binding protein 1	CORTBP1	Q9UPX8-4	134.93	5.37E-04	1.67E+06	0.00E+00	0.00E+00	2.70E+04
15-oxoprostaglandin 13-reductase	LTB4DH	Q14914	35.869	1.94E-03	1.62E+06	6.55E+03	9.79E+03	0.00E+00
Complement component 8 subunit alpha	C8A	P07357	65.163	9.23E-20	1.61E+06	0.00E+00	0.00E+00	0.00E+00
Annexin A2	ANX2	P07355-2	40.411	8.17E-13	1.58E+06	0.00E+00	1.74E+04	1.42E+04
10-formyltetrahydrofolate dehydrogenase	ALDH1L1	O75891	98.828	1.33E-06	1.54E+06	0.00E+00	2.98E+04	0.00E+00

Ephrin type-A receptor 1	EPH	P21709	108.13	1.10E-08	1.53E+06	0.00E+00	6.55E+03	0.00E+00
		E5RH16	26.484	7.28E-45	1.52E+06	0.00E+00	0.00E+00	4.20E+03
L-lactate dehydrogenase	LDHA	B7Z5E3	39.837	4.98E-24	1.47E+06	0.00E+00	2.26E+04	0.00E+00
Mu-crystallin homolog	CRYM	Q14894	33.775	3.81E-06	1.44E+06	3.81E+03	3.51E+03	0.00E+00
136 kDa double-stranded RNA-binding protein	ADAR	E7ENU4	140.83	1.60E-07	1.43E+06	3.60E+04	0.00E+00	0.00E+00
14-3-3 protein beta/alpha	YWHAB	P31946	28.082	1.20E-12	1.40E+06	0.00E+00	1.71E+04	0.00E+00
Adenosylhomocysteinase	AHCY	P23526	47.716	7.01E-05	1.39E+06	0.00E+00	1.90E+04	0.00E+00
Antagonist decoy receptor for TRAIL/Apo-2L	DCR1	F5H3Y5	29.684	1.91E-04	1.39E+06	3.98E+03	4.72E+03	0.00E+00
Brain immunoglobulin receptor	CADM3	Q8N126-2	47.02	8.64E-07	1.38E+06	2.02E+04	0.00E+00	0.00E+00
FXFD domain-containing ion transport regulator 2	ATP1C	P54710	7.2832	1.05E-11	1.37E+06	0.00E+00	0.00E+00	1.30E+04
Primary amine oxidase	ABP1	C9J690	87.238	5.45E-06	1.35E+06	0.00E+00	1.37E+04	0.00E+00
HCV NS5A-transactivated protein 13 target protein 2	NS5ATP13TP2	Q86UD1	30.688	6.39E-05	1.34E+06	0.00E+00	1.72E+03	7.84E+03
Cytokeratin-8	CYK8	F8VXB4	56.608	2.93E-06	1.32E+06	0.00E+00	1.30E+04	4.18E+03
Copine III	CPN3	O75131	60.13	4.48E-05	1.31E+06	3.67E+03	3.79E+03	9.18E+03
Alpha-actinin-4	ACTN4	O43707	104.85	5.36E-05	1.30E+06	5.93E+03	1.56E+04	0.00E+00
Heat shock 70kDa protein 1-like	DAAP-21F2.9-001	Q53FA3	70.403	1.72E-09	1.30E+06	7.15E+03	0.00E+00	0.00E+00
Neurofascin	KIAA0756	O94856-9	137.61	4.45E-04	1.30E+06	1.65E+03	2.12E+03	0.00E+00
Anchorin CII	ANX5	P08758	35.936	3.68E-05	1.29E+06	0.00E+00	1.47E+04	4.73E+03
3-mercaptopyruvate sulfurtransferase	MPST	E7ERL2	33.174	1.23E-04	1.29E+06	0.00E+00	1.58E+04	0.00E+00
Leucine-rich repeat protein induced by beta-amyloid homolog	LIB	Q8TF66-2	65.021	3.62E-05	1.17E+06	0.00E+00	0.00E+00	1.69E+04
Charged multivesicular body protein 4b	C20orf178	Q9H444	24.95	4.97E-05	1.15E+06	0.00E+00	2.78E+04	0.00E+00
ESCRT-I complex subunit VPS28	VPS28	Q9UK41-2	26.462	1.54E-06	1.12E+06	0.00E+00	2.44E+04	0.00E+00
Cell division control protein 42 homolog	CDC42	P60953	21.258	6.52E-10	1.10E+06	0.00E+00	2.26E+03	2.14E+04
Serine protease hepsin	HPN	P05981	45.011	3.12E-06	1.09E+06	8.35E+03	9.00E+03	0.00E+00
Putative uncharacterized protein FCN2	FCN2	A8MT47	35.262	6.15E-06	1.07E+06	6.72E+03	0.00E+00	1.68E+03
Ig heavy chain V-III region HIL		P01771	13.437	8.05E-10	1.07E+06	1.10E+04	0.00E+00	9.02E+03
Cytosolic NADP-isocitrate dehydrogenase	IDH1	O75874	46.659	3.18E-05	1.07E+06	0.00E+00	8.83E+03	0.00E+00

Ras-related protein Rab-15	RAB15	P59190	24.39	2.26E-13	1.07E+06	3.97E+03	6.88E+03	0.00E+00
C3 and PZP-like alpha-2-macroglobulin domain-containing protein 4	C5	P01031	188.3	2.09E-08	1.03E+06	0.00E+00	0.00E+00	0.00E+00
Putative uncharacterized protein FAM3C	FAM3C	C9JMN4	16.157	6.84E-42	1.02E+06	0.00E+00	5.03E+03	0.00E+00
Constitutively expressed serum amyloid A protein	CSAA	P35542	14.746	2.71E-07	1.02E+06	0.00E+00	0.00E+00	0.00E+00
Na-Cl symporter	SLC12A3	P55017-2	113.93	1.76E-04	1.02E+06	2.55E+03	4.38E+03	0.00E+00
100 kDa NT receptor	SORT1	Q99523	92.067	6.84E-05	1.01E+06	4.77E+03	1.57E+03	1.05E+03
Pyroglutamyl-peptidase II	TRHDE	Q9UKU6	117	1.22E-04	1.00E+06	0.00E+00	0.00E+00	1.05E+04
Ig lambda-7 chain C region	IGLC7	A0M8Q6	11.303	3.34E-299	9.98E+05	0.00E+00	8.52E+03	0.00E+00
Atrial natriuretic peptide clearance receptor	ANPRC	P17342	59.807	2.11E-07	9.90E+05	5.15E+03	1.62E+04	0.00E+00
Cytokeratin-4	CYK4	P19013	63.91	3.18E-08	9.01E+05	0.00E+00	0.00E+00	0.00E+00
Phosphohydroxythreonine aminotransferase	PSA	Q9Y617	40.422	3.71E-04	8.98E+05	4.39E+03	6.88E+03	0.00E+00
G protein subunit beta-2	GNB2	P62879	37.331	7.99E-06	8.52E+05	0.00E+00	9.91E+03	8.54E+03
Collagen, type XI, alpha 2	COL11A2	B0UXF1	31.9	1.62E-03	8.43E+05	1.29E+03	0.00E+00	1.06E+03
Kinesin-like protein KIF12	KIF12	Q96FN5	70.659	7.61E-05	8.29E+05	0.00E+00	1.30E+04	0.00E+00
Gamma-tropomyosin	TPM3	P06753-2	29.032	3.69E-04	8.18E+05	0.00E+00	2.29E+03	1.93E+03
G-protein coupled receptor 140	GPR140	Q96AM1	38.171	5.52E-04	7.40E+05	0.00E+00	0.00E+00	0.00E+00
Apoptosis-linked gene 2 protein	ALG2	O75340	21.868	4.81E-04	7.09E+05	0.00E+00	2.64E+03	1.69E+03
Glutathione S-transferase A1	GSTA1	P08263	25.631	2.85E-18	6.97E+05	1.06E+04	0.00E+00	0.00E+00
		F8WCC8	44.881	5.98E-303	6.63E+05	0.00E+00	1.19E+04	0.00E+00
Killer cell lectin-like receptor subfamily K member 1	D12S2489E	P26718	25.274	5.83E-04	6.58E+05	5.05E+03	0.00E+00	0.00E+00
Chromokinesin-B	KIF4B	Q2VIQ3	140.03	1.68E-03	6.53E+05	0.00E+00	5.27E+03	0.00E+00
cDNA FLJ53670, highly similar to EGF-containing fibulin-like extracellular matrix protein 1		B4DW75	39.195	0.00E+00	6.00E+05	3.60E+03	0.00E+00	0.00E+00
Ephrin type-A receptor 2	ECK	P29317	108.27	2.41E-03	5.81E+05	0.00E+00	2.04E+03	0.00E+00
Putative uncharacterized protein MUC20	MUC20	C9JJE7	73.131	3.15E-16	5.68E+05	0.00E+00	1.26E+04	1.43E+04
Ig kappa chain V-III region GOL		P04206	11.83	1.36E-208	5.63E+05	0.00E+00	3.93E+03	2.20E+03
LC64P	LCPI	P13796	70.288	1.34E-04	5.49E+05	0.00E+00	2.67E+03	1.53E+04

Erythrocyte band 7 integral membrane protein	BND7	P27105	31.73	1.39E-07	5.22E+05	0.00E+00	1.48E+04	0.00E+00
Involucrin	IVL	P07476	68.478	3.99E-04	5.19E+05	0.00E+00	1.06E+04	0.00E+00
Formimidoyltetrahydrofolate cyclodeaminase	FTCD	O95954	58.926	8.53E-04	4.93E+05	0.00E+00	1.10E+04	0.00E+00
Guanine nucleotide-binding protein G(I)/G(S)/G(T) subunit beta-1	GNB1	P62873	37.377	1.17E-03	4.93E+05	0.00E+00	9.25E+03	0.00E+00
Fructose transporter	GLUT5	P22732	54.973	6.90E-06	4.84E+05	0.00E+00	3.64E+03	2.70E+03
84 kDa myeloperoxidase	MPO	P05164-3	87.248	1.56E-05	4.63E+05	0.00E+00	0.00E+00	1.74E+04
Apolipoprotein L	APOL	O14791-2	45.918	2.43E-05	4.55E+05	0.00E+00	0.00E+00	0.00E+00
Collagen alpha-5(IV) chain	COL4A5	E7EQD0	161.66	9.10E-04	4.31E+05	0.00E+00	0.00E+00	4.88E+02
Cadherin family member 14	CDHF14	Q6V0I7	542.68	8.98E-04	4.16E+05	0.00E+00	9.53E+03	0.00E+00
Heat shock 84 kDa	HSP90AB1	P08238	83.263	3.67E-27	3.71E+05	0.00E+00	4.13E+03	0.00E+00
14-3-3 protein gamma	YWHAQ	P61981	28.302	1.46E-08	3.67E+05	7.01E+02	4.08E+03	2.29E+03
Heterogeneous nuclear ribonucleoprotein M	HNRNPM	P52272	77.515	5.78E-04	3.25E+05	2.50E+03	1.85E+03	0.00E+00
NADPH:quinone reductase	CRYZ	Q08257	35.206	1.29E-03	2.53E+05	0.00E+00	5.91E+03	0.00E+00
Membrane-organizing extension spike protein	MSN	P26038	67.819	1.94E-10	2.49E+05	0.00E+00	2.89E+03	0.00E+00
Angiopoietin-like 2	ANGPTL2	Q8NCH7	22.717	2.31E-42	2.42E+05	0.00E+00	4.21E+03	0.00E+00
Charged multivesicular body protein 1a	CHMP1	Q9HD42	21.703	9.88E-04	2.28E+05	0.00E+00	2.36E+03	0.00E+00
Alanine aminotransferase 1	AAT1	P24298	54.636	1.19E-08	2.00E+05	0.00E+00	3.54E+03	0.00E+00
Ig heavy chain V-III region BUR		P01773	12.265	2.74E-03	1.68E+05	4.32E+03	0.00E+00	0.00E+00
		Q32PJ2	43.017	9.77E-05	1.51E+05	0.00E+00	0.00E+00	3.19E+03
Ig heavy chain V-III region KOL		P01772	13.718	9.87E-07	1.05E+05	0.00E+00	0.00E+00	0.00E+00
Ephrin type-A receptor 10	EPHA10	Q5JZY3	109.63	1.39E-78	1.04E+05	1.08E+03	0.00E+00	0.00E+00
Heat shock-related 70 kDa protein 2	HSPA2	P54652	70.02	8.08E-10	8.90E+04	0.00E+00	9.75E+02	0.00E+00
Latent-transforming growth factor beta-binding protein 3	LTBP3	Q9NS15	139.36	1.30E-04	5.01E+04	0.00E+00	0.00E+00	8.30E+02
14-3-3 protein tau	YWHAQ	P27348	27.764	1.22E-08	4.97E+04	0.00E+00	1.42E+03	0.00E+00
Putative uncharacterized protein MDH1	MDH1	C9JRL4	13.044	1.55E-45	0.00E+00	0.00E+00	0.00E+00	0.00E+00

Supplementary Table 2. Statistical analysis of the quantified proteins. In the table are reported proteins significantly modulated (P value <0.01) by ANOVA test among SS, SR patients and control C and proteins significantly modulate after T test analysis between the groups indicated in the row. Protein names, gene names, Uniprot ID for each protein was also reported in the table.

Protein Names	Gene Names	Uniprot	ANOVA p value	T-test P-VALUE CvsSR	T-test P-VALUE CvsSS	T test P-VALUE SRvsSS
Alpha-globin	HBA1	P69905	2.23E-04		8.27E-03	1.42E-02
N-sulphoglucosamine sulphohydrolase	HSS	P51688	1.92E-05		8.92E-03	1.67E-03
Beta-globin	HBB	P68871	5.80E-05		3.23E-03	6.35E-03
Filamin B	FLNB	B2ZZ83	2.36E-05		4.45E-04	3.69E-04
nephrin 1	KIRREL	Q96J84-2	4.97E-04	5.04E-03	8.58E-04	4.54E-02
Anti-neoplastic urinary protein	ARS	P55000	9.11E-04		5.02E-03	3.94E-03
Hemicentin-2	HMCN2	Q8NDA2	6.43E-05		2.67E-03	6.52E-05
Afamin	AFM	P43652	3.97E-04		1.80E-04	3.94E-03
Cadherin-2	CDH2	P19022	1.49E-04		3.68E-04	2.18E-02
CCN family member 3	CCN3	P48745	1.43E-04		2.31E-03	5.74E-03
Ig alpha-1 chain C region	IGHA1	P01876	2.32E-03		6.54E-04	3.35E-03
Immunoglobulin J chain	IGCJ	P01591	7.06E-04		7.38E-04	6.11E-04
Chondroitin sulfate proteoglycan 4	CSPG4	Q6UVK1	8.51E-04		1.37E-03	1.49E-03
Hepatocellular carcinoma-associated protein TB6	PIGR	P01833	4.86E-05		3.31E-06	1.66E-04
Alanyl aminopeptidase	ANPEP	P15144	1.85E-05		5.66E-05	4.74E-07
Auberger B antigen	BCAM	P50895	2.60E-03		5.08E-03	1.34E-03
Gamma-glutamyltransferase 1	GGT	P19440	1.06E-07	1.22E-03	8.90E-04	2.90E-07
Collagen alpha-1(VI) chain	COL6A1	P12109	1.03E-05		2.42E-05	1.16E-04
Herpes virus entry mediator B	HVEB	Q92692	3.89E-05		6.48E-07	4.65E-03
Entactin	NID	P14543	1.33E-05		1.02E-04	8.27E-03
Magic roundabout	ROBO4	Q8WZ75	6.17E-04		2.32E-04	1.77E-04
Alpha-N-acetylglucosaminidase	NAGLU	P54802	2.60E-04		3.28E-04	2.73E-02
Glycoprotein GP36b	C5orf8	Q12907	9.44E-06		9.18E-08	1.24E-02
Gamma-seminoprotein	APS	P07288	5.88E-03		2.11E-03	5.25E-03
6-phosphogluconolactonase	PGLS	O95336	7.51E-05		7.34E-05	2.76E-03
Protocadherin gamma-C3	PCDH2	Q9UN70	3.21E-04		9.38E-07	9.94E-03
Nuclear transport factor 2	NTF2	P61970	5.93E-05		1.62E-04	1.40E-04
Prostatic acid phosphatase	ACPP	P15309	5.38E-05		3.92E-04	1.49E-04
Carboxypeptidase E	CPE	P16870	2.02E-07		1.10E-04	1.80E-07

Peptidoglycan recognition protein 1	PGLYRP	O75594	1.74E-03		1.12E-05	6.70E-03
Ig heavy chain V-III region VH26		P01764	1.56E-05	1.92E-03	8.98E-05	3.62E-02
Dehydropeptidase-I	DPEP1	P16444	3.71E-03		2.82E-03	5.41E-05
Beta-2-microglobulin	B2M	P61769	3.71E-05		1.71E-05	3.13E-05
Ig kappa chain V-I region Scw		P01609	1.26E-12	2.95E-12	2.04E-06	2.00E-02
C-type lectin domain family 14 member A	C14orf27	Q86T13	4.41E-03		1.29E-03	1.67E-02
Acid beta-galactosidase	ELNR1	P16278	2.59E-03		1.18E-03	2.62E-02
Glutathione S-transferase P	FAEES3	P09211	1.45E-03		5.52E-03	6.82E-04
Lipocalin-1	LCN1	P31025	1.54E-06	1.92E-05	1.13E-03	3.32E-02
Protein FAM3C	FAM3C	Q92520	7.28E-05		7.75E-06	6.71E-04
Cathepsin C	CPPI	P53634	3.29E-05		1.94E-05	4.19E-03
Aminopeptidase A	ENPEP	Q07075	7.25E-04		3.18E-04	1.91E-02
Ig superfamily receptor LNIR	LNIR	Q96NY8	1.67E-11		3.11E-08	5.67E-09
Ig heavy chain V-III region BRO		P01766	2.76E-03		4.71E-04	1.86E-02
Melanoma-associated antigen p97	MAP97	P08582	2.25E-05		5.33E-06	9.02E-04
ITIH4 protein	ITIH4	B7ZKJ8	4.54E-03		4.57E-03	1.57E-02
Growth/differentiation factor 15	GDF15	Q99988	1.94E-03		2.06E-03	1.01E-04
Natural killer cell-enhancing factor A	PAGA	Q06830	1.80E-04		9.67E-06	2.70E-04
28 kDa heat shock protein	HSP27	P04792	5.78E-05	3.92E-03	2.91E-03	3.93E-04
CD167 antigen-like family member A	CAK	Q08345-5	2.23E-03		5.71E-04	2.15E-04
Ig mu chain C region	IGHM	P01871-2	3.10E-09	1.86E-04	1.13E-12	9.59E-03
Cyclophilin B	CYPB	P23284	4.34E-06		2.10E-07	6.45E-05
Low-density lipoprotein receptor	LDLR	P01130	5.80E-05	4.89E-03	1.77E-04	1.46E-02
Ceroid-lipofuscinosis neuronal protein 5	CLN5	O75503	5.51E-03		1.63E-03	4.32E-04
Calgranulin-A	CAGA	P05109	7.73E-03		2.07E-03	1.15E-02
CCP module-containing protein 22	C9orf13	Q4LDE5	2.59E-06		2.51E-03	2.51E-03
Dopamine-responsive gene 1 protein	C6orf55	Q9NP79	6.42E-04	2.21E-03		1.36E-02
Endoglin	END	P17813	1.16E-03			1.20E-02
DRT	DRT	P29323	2.59E-04	3.15E-04		3.31E-02
Apolipoprotein A4	APOA4	P06727	6.18E-04			9.81E-03
Glycine hydroxymethyltransferase	SHMT1	P34896	1.93E-03	5.62E-03		1.73E-02
Betaine--homocysteine S-methyltransferase 1	BHMT	Q93088	1.90E-03	5.17E-03		2.04E-02
Cadherin-related family member 5	CDHR5	Q9HBB8	2.70E-04	1.64E-04		3.96E-02
Cancer/testis antigen 19	IL13R	P78552	5.19E-04	2.80E-03		2.17E-03

CD107 antigen-like family member A	LAMP1	P11279	2.26E-05	2.16E-05	3.03E-02
Fibrillin-1	FBN	P35555	6.47E-03		4.80E-02
APP secretase	CPSB	P07858	2.73E-03		9.72E-03
Di-N-acetylchitobiase	CTB	Q01459	3.59E-05	9.16E-03	6.75E-05
Lymphocyte antigen 6H	LY6H	O94772	5.60E-03		1.01E-02
Calcium-independent phospholipase A2-gamma	BM-043	Q9NP80	1.61E-03	5.25E-04	5.97E-03
Epidermal growth factor-like protein 4	C19orf49	Q7Z7M0	1.70E-04	1.21E-04	4.60E-03
Vitelline membrane outer layer protein 1 homolog	UNQ6350/PRO21055	Q7Z5L0	4.89E-05	9.05E-05	4.68E-03
Neural cell adhesion molecule 1	NCAM	P13591	6.68E-03		1.83E-02
Hexabrachion-like protein	HXBL	E7EPZ9	9.20E-03		2.09E-02
Alpha-1-acid glycoprotein 2	AGP2	P19652	3.91E-03		4.59E-04
Protein S100-A7	PSOR1	P31151	9.28E-03		2.99E-02
E3 ubiquitin-protein ligase RNF167	LP2254	Q9H6Y7	4.06E-05	8.91E-05	1.97E-03
OPCML protein	OPCML	B7ZLQ1	9.81E-03		5.83E-03
GTP cyclohydrolase 1 feedback regulatory protein	GCHFR	P30047	5.47E-03	6.90E-03	2.67E-02
Latent-transforming growth factor beta-binding protein 4	LTBP4	Q8N2S1-2	5.67E-03		7.15E-03
Limitrin	MXRA8	Q9BRK3-2	9.93E-03	5.56E-03	4.47E-02
Cysteine-rich secretory protein 9	CRISP9	Q6UXB8	3.78E-04	6.96E-07	6.18E-03
Interleukin-18-binding protein	IL18BP	G3V1C5	6.08E-04	5.88E-04	2.24E-02
70 kDa lysosomal alpha-glucosidase	GAA	P10253	7.43E-05	4.78E-05	1.84E-02
Aging-associated gene 4 protein	AAG4	P10909-2	4.48E-03	3.64E-03	4.23E-02
Apolipoprotein E	APOE	P02649	3.02E-05	5.89E-05	1.57E-03
Cadherin-6	CDH6	P55285	5.13E-05	2.29E-05	8.53E-04
Cyclophilin A	CYPA	P62937	5.14E-05	5.32E-05	1.84E-03
460 kDa receptor	CUBN	O60494	1.09E-06	7.43E-07	2.98E-04
CD62 antigen-like family member L	LNHR	P14151	6.07E-03	3.20E-03	8.17E-03
Biglycan	BGN	P21810	1.63E-03	1.71E-03	1.11E-02
C3B/C4B inactivator	CFI	E7ETH0	2.66E-04	7.47E-05	1.21E-02
CD85 antigen-like family member F	ILT11	A6NI73	3.41E-03	9.61E-04	3.23E-02
GCTM-2 antigen	PCLP	F5GWY5	8.03E-04	1.37E-03	1.23E-02
Man(9)-alpha-mannosidase	MAN1A1	P33908	6.58E-04	2.10E-03	2.86E-03
Heat shock 86 kDa	HSP90A	P07900-2	7.32E-03		2.38E-02
B(2)GCN homolog	EIF3A	P56537	2.08E-06	3.00E-05	5.19E-04

Adipose tissue-specific secretory factor	FIZZ3	Q9HD89	4.70E-03	1.22E-03	3.73E-02
C-type lectin domain family 4 member G	CLEC4G	Q6UXB4	9.10E-03	1.04E-03	2.63E-02
Chondrolectin	C21orf68	Q9H9P2	9.23E-03	4.23E-04	3.32E-02
Glycoprotein 330	LRP2	P98164	1.82E-04	2.37E-04	1.79E-03
Islet cells regeneration factor	PSPS	P05451	3.84E-04	2.77E-06	8.88E-03
Receptor expressed in lymphoid tissues	RELT	Q969Z4	9.20E-04	1.39E-03	5.96E-03
cDNA FLJ32696 fis, clone TESTI2000358	IST1	A8KAH5	9.00E-04	1.20E-03	7.60E-03
cDNA FLJ32696 fis, clone TESTI2000358	IST1	A8KAH5	8.83E-04	1.61E-03	5.89E-03
Actin, cytoplasmic 1	ACTB	P60712	5.22E-04	2.87E-03	2.88E-03
Anthrax toxin receptor 1	ANTXR1	Q9H6X2	3.10E-06	2.49E-07	5.81E-04
Endonuclease domain-containing 1 protein	ENDOD1	O94919	6.63E-04	5.16E-04	8.78E-03
Golgi membrane protein 1	C9orf155	Q8NBJ4	1.47E-03	8.72E-03	2.44E-03
Density-enhanced phosphatase 1	DEP1	Q12913	2.76E-03	2.52E-03	7.60E-03
Triosephosphate isomerase	TPI	P60174	2.83E-03	7.59E-03	5.60E-03
Latent-transforming growth factor beta-binding protein 1	LTBP1	Q14766-4	1.13E-04	6.19E-06	6.19E-03
CNDP dipeptidase 2	CN2	Q96KP4	3.60E-04	3.30E-03	1.83E-03
Alpha-1 type I collagen	COL1A1	P02452	4.48E-04	4.11E-05	2.37E-02
Agrin	AGRIN	O00468	1.02E-05	1.32E-05	6.14E-03
Contactin-1	CNTN1	Q12860	8.55E-03		9.55E-03
Carboxypeptidase N 83 kDa chain	ACBP	P22792	1.40E-04	2.44E-03	7.59E-04
Neuroserpin	PII2	Q99574	9.77E-03		1.65E-02
Heat shock 70 kDa protein 8	HSC70	P11142	4.89E-04	4.31E-03	1.52E-03
14-3-3 protein zeta/delta	YWHAZ	E7EX29	1.78E-04	1.94E-03	4.28E-05
Choline phosphatase 3	PLD3	Q8IV08	2.30E-04		3.22E-04
Sushi domain-containing protein 2	SUSD2	Q9UGT4	9.51E-04		7.55E-04
Alpha-2-HS-glycoprotein	AHSG	F5H0Q5	2.57E-05	5.10E-07	4.44E-02
Lysosomal acid phosphatase	ACP2	P11117	1.12E-07	1.05E-04	2.18E-06
Ig kappa chain V-III region VG		P04433	4.25E-05	1.61E-05	4.51E-02
2-phospho-D-glycerate hydro-lyase	ENO1	P06733	1.75E-05	1.01E-03	8.78E-05
14-3-3 protein epsilon	YWHAE	P62258	1.68E-04	3.36E-03	5.57E-04
Prolylcarboxypeptidase (Angiotensinase C), isoform CRA_b	hCG_27286	A8MU24	2.13E-04		4.91E-04

Endothelial cell-selective adhesion molecule	ESAM	Q96AP7	6.96E-04	1.47E-04	2.95E-02
CD209 antigen	CD209	Q9NNX6	1.96E-05	1.30E-06	1.43E-02
Fructose-bisphosphate aldolase B	ALDB	P05062	2.07E-04	6.28E-03	9.09E-04
Antigen CD42b-alpha	GP1BA	E7ES66	2.13E-05	1.78E-05	5.41E-03
AIG2-like domain-containing protein 1	A2LD1	Q9BVM4	1.89E-04	7.88E-04	1.47E-03
High endothelial venule protein	SPARCL1	Q14515	1.19E-03		2.00E-03
Haptoglobin	HP	P00738	1.45E-03	2.76E-03	1.56E-02
MOCO1-A	MOCO1	O96033	2.43E-03		4.74E-04
Coactosin-like protein	CLP	Q14019	3.10E-03		1.37E-03
Aromatic-L-amino-acid decarboxylase	AADC	P20711	9.99E-03		7.14E-03
Fc-gamma RIII-beta	CD16B	O75015	1.91E-04	5.56E-03	8.75E-04
Bumetanide-sensitive sodium-(potassium)-chloride cotransporter 2	NKCC2	E9PDW4	2.00E-04	1.29E-02	1.54E-04
Placental ribonuclease inhibitor	PRI	P13489	8.79E-05	4.75E-03	2.31E-04
NRH dehydrogenase [quinone] 2	NMOR2	P16083	1.34E-07	8.99E-05	3.08E-05
Leucine-rich repeat neuronal protein 4	C20orf75	Q8WUT4	4.74E-03		1.25E-02
Charged multivesicular body protein 5	C9orf83	Q9NZZ3	7.40E-03		1.29E-02
Apyrase homolog	CANT1	Q8WVQ1	9.10E-03		3.41E-03
Bumetanide-sensitive sodium-(potassium)-chloride cotransporter 2	NKCC2	E9PDW4	2.43E-04	1.29E-03	1.54E-04
Aldehyde reductase	AKR1B1	P15121	1.35E-04	2.31E-03	2.31E-03
Fibrinolytic	TGM4	P49221	1.39E-04	2.43E-03	2.35E-03
Angiotensin-converting enzyme	ACE	P12821	1.72E-03	2.53E-03	4.20E-02
CDw113	PRR3	Q9NQS3	7.38E-04	3.82E-03	1.00E-02
BPG-dependent PGAM 1	CDABP0006	F2Z2J9	4.18E-05	4.85E-04	2.87E-03
L-lactate dehydrogenase	LDHA	B7Z5E3	2.84E-04	3.46E-03	3.46E-03
ESCRT-I complex subunit VPS28	VPS28	Q9UK41-2	8.65E-04	6.40E-03	6.40E-03
Cytosolic NADP-isocitrate dehydrogenase	IDH1	O75874	1.82E-03	9.75E-03	9.95E-03
Kinesin-like protein KIF12	KIF12	Q96FN5	8.28E-04	6.25E-03	6.41E-03
Amyloid protein homolog	APLP2	Q06481	2.77E-03		1.24E-02
Histone H1.5	H1F5	P16401	2.37E-04		1.40E-02
15-hydroxyprostaglandin dehydrogenase [NADP+]	CBR	P16152	2.65E-03		1.21E-02

35-beta calcimedlin	ANX4	P09525	4.40E-03			1.62E-02
Delta-globin	HBD	P02042	1.23E-04			1.08E-02
14-3-3 protein beta/alpha	YWHAB	P31946	2.51E-03			1.17E-02
Adenosylhomocysteinase	AHCY	P23526	3.50E-03			1.42E-02
Cell division control protein 42 homolog	CDC42	P60953	1.45E-03			3.40E-02
Pyroglutamyl-peptidase II	TRHDE	Q9UKU6	1.14E-03			2.63E-02
Guanine nucleotide-binding protein G(I)/G(S)/G(T) subunit beta-1	GNB1	P62873	2.90E-03			1.27E-02
Cadherin family member 14	CDHF14	Q6V0I7	4.18E-03			1.60E-02
NADPH:quinone reductase	CRYZ	Q08257	8.78E-03			2.44E-02
10-formyltetrahydrofolate dehydrogenase	ALDH1L1	O75891	5.97E-03			1.94E-02
300 kDa mannose 6-phosphate receptor	IGF2R	P11717	5.68E-04	1.15E-03		7.21E-04
Kaliocin-1	LF	P02788	7.45E-03	3.42E-04		
Epidermal-type fatty acid-binding protein	FABP5	Q01469	8.64E-03	3.08E-04		
Actin regulatory protein CAP-G	AFCP	P40121	3.58E-03	2.00E-03		5.29E-03
Metallothionein-0	MT1H	P80294	1.71E-03	1.51E-03		
Fetal antigen 1	DLK	P80370	5.67E-03			3.29E-03
Tamm-Horsfall urinary glycoprotein	UMOD	E9PEA4	1.71E-06	2.00E-07		2.71E-04
18 kDa cationic antimicrobial protein	CAMP	P49913	8.59E-04	1.63E-04		5.16E-03
Epididymal secretory protein E4	HE4	Q14508	5.49E-07	2.61E-05		2.86E-06
Aggrecan core protein	ACAN	E7EX88	7.98E-04			1.55E-04
Protein HEG homolog 1	HEG1	Q9ULI3	2.95E-04	1.42E-03		2.54E-03
Spasmolysin	SML1	Q03403	1.90E-03			8.94E-03
Glucocorticoid-inducible protein 5	GIS5	Q9GZM7	2.59E-03			3.03E-03
76 kDa protein	PLBD2	Q8NHP8	6.85E-05	4.35E-04		7.22E-04
Acrogranin	GRN	P28799	2.80E-03	2.00E-04		
EndoCAM	PECAM1	P16284	4.00E-03			1.18E-04
Fetomodulin	THBD	P07204	7.28E-04	1.58E-04		
Kringle domain-containing protein HGFL	HGFL	Q96FE7	1.16E-03			5.49E-03
Gp80-LNGFR	NGFR	P08138	2.84E-03	2.72E-03		4.84E-03
Acrosomal serine protease inhibitor	PCI	P05154	8.14E-05	2.09E-04		3.65E-04
Insulin-like growth factor-binding protein 2	BP2	P18065	6.44E-03	2.31E-03		
Mucosal addressin cell adhesion molecule 1	MADCAM1	F5H511	2.56E-03	4.35E-05		
ABPP	A4	P05067	5.67E-06	4.32E-05		6.09E-05

Epidermal growth factor	EGF	P01133	1.80E-04	2.23E-04	5.72E-04
Herpes virus entry mediator A	HVEA	Q92956	9.59E-04	2.41E-03	1.37E-03
Complement component C7	C7	P10643	1.12E-03	1.54E-03	6.55E-04
Metallothionein-1X	MT1X	P80297	4.73E-03	1.21E-03	
Peptide O-xylosyltransferase 1	XT1	Q86Y38	4.15E-03	1.71E-03	
Putative uncharacterized protein BTN2A1	BTN2A1	B9ZVU6	4.42E-04	5.39E-04	1.07E-03
Anastellin	FN	P02751	6.37E-03	2.32E-03	
Nectin-like protein 5	PVR	P15151	3.06E-03	1.80E-03	
Gc-globulin	GC	P02774	2.76E-03	1.45E-03	
Bone sialoprotein 1	BNSP	P10451	8.73E-03	4.43E-03	
Putative uncharacterized protein CDH13	CDH13	C9JRI6	6.90E-03	9.53E-04	
Basement membrane-specific heparan sulfate proteoglycan core protein	HSPG2	P98160	3.95E-03	6.29E-03	2.78E-03
5F7	BSG	P35613	5.85E-03	1.31E-03	
CD55 molecule, decay accelerating factor for complement (Cromer blood group)	CD55	B1AP13	5.04E-04	4.30E-05	
Alpha-1-antichymotrypsin	AACT	G3V5I3	3.92E-03	5.00E-04	
Cerebroside sulfate activator protein	GM2A	P17900	2.20E-03	7.51E-04	
Ig lambda-2 chain C regions	IGLC2	P0CG05	5.28E-03	2.61E-04	
Cell surface glycoprotein MUC18	MCAM	P43121	3.43E-03	5.64E-08	
Ig kappa chain V-II region GM607		P06309	7.89E-04	2.36E-04	
Beta-trace protein	PDS	F8W7I2	2.74E-04	1.27E-05	
1,4-alpha-D-glucan glucanohydrolase	AMY2A	P04746	6.32E-03		1.30E-03
Protein CEGP1	CEGP1	E7EQD6	2.69E-04	1.33E-04	
Alpha-1 protease inhibitor	AAT	P01009	2.61E-03	8.68E-03	4.20E-03
Cell surface retention sequence-binding protein 1	CRSBP1	Q9Y5Y7	1.42E-04	1.08E-06	
Ig kappa chain V-III region SIE		P01620	6.36E-03		6.87E-04
CD81 partner 3	CD81P3	Q969P0	2.02E-05	2.31E-03	1.39E-07
Ig kappa chain V-I region AG		P01593	2.48E-05	2.71E-04	1.72E-05
HDC	IGHG3	P01860	1.77E-04	2.96E-04	9.09E-03
1,4-alpha-D-glucan glucanohydrolase 1	AMY1	P04745	2.66E-03	1.23E-06	
Ig kappa chain V-IV region JI	IGKV4-1	P06313	7.35E-03		1.76E-03

Putative uncharacterized protein ENSP00000323500	PGCP	B5MDX4	5.76E-04	2.04E-03	1.27E-03
Alpha-galactosidase B	NAGA	P17050	6.84E-04	3.35E-03	1.57E-03
CAK1 antigen	MPF	Q13421-2	9.40E-03		
Cystatin-6	CST6	Q15828	5.25E-11	1.18E-09	2.81E-07
Ig kappa chain C region	IGKC	P01834	1.28E-04	5.69E-04	1.22E-04
Actin-depolymerizing factor	GSN	P06396	5.13E-06	7.99E-05	2.05E-05
Interleukin-1 receptor 3	C3orf13	Q9NPH3-5	2.46E-04	2.75E-05	9.26E-03
Ig kappa chain V-I region EU		P01598	1.39E-03	6.48E-04	5.65E-03
Ig gamma-1 chain C region	IGHG1	P01857	9.33E-05	1.29E-04	3.01E-03
Complement component 4A (Rodgers blood group)	C4A	B0UZ83	1.42E-03	9.22E-03	6.86E-04
Corticosteroid-binding globulin	CBG	P08185	9.41E-06	1.59E-05	5.88E-04
Ig heavy chain V-III region GAL		P01781	2.48E-06	3.60E-04	2.96E-06
Monocyte differentiation antigen CD14	CD14	P08571	5.10E-06	3.39E-05	7.77E-05
Ig lambda chain V-III region LOI		P80748	3.14E-05	1.59E-04	3.96E-04
Angiotensin I	AGT	P01019	4.80E-04	2.02E-03	3.20E-03
Intestinal trefoil factor	ITF	E9PBB5	7.40E-03		1.75E-03
Ig heavy chain V-III region BUT		P01767	1.96E-03	2.30E-03	7.44E-03
Ig kappa chain V-I region AU		P01594	3.01E-04	3.37E-04	2.80E-03
Fatty acid-binding protein 1	FABP1	P07148	9.39E-04	3.47E-03	3.81E-03
Cadherin family member 2	CDHF2	F8W7U2	4.68E-08	2.09E-06	1.55E-06
7,8-dihydro-8-oxoguanine triphosphatase	MTH1	P36639	3.72E-03	9.53E-03	3.06E-03
Protocadherin-12	PCDH12	Q9NPG4	6.04E-04	2.53E-03	1.09E-04
Erythroid-potentiating activity	CLGI	P01033	8.44E-03		2.21E-03
Ig kappa chain V-I region Ni		P01613	3.79E-03	1.93E-03	
Leu-enkephalin	PENK	P01210	1.29E-06	3.99E-06	7.17E-05
Collectin placenta protein 1	CLP1	Q5KU26	5.04E-05	9.20E-05	5.22E-04
Ig heavy chain V-III region TIL		P01765	1.87E-04	2.88E-03	1.15E-03
Ig kappa chain V-I region Wes		P01611	1.10E-05	4.01E-05	5.91E-03
Fc gamma-binding protein antigen	FCGBP	Q9Y6R7	5.20E-05	8.37E-04	5.90E-04
45 kDa calcium-binding protein	CAB45	Q9BRK5	3.52E-03		4.60E-04

Ig kappa chain V-II region RPMI 6410		P06310	3.01E-06	1.41E-03	7.31E-09
Cystatin-A	CSTA	P01040	5.14E-03	7.50E-03	
Calgranulin-B	CAGB	P06702	6.40E-05	9.75E-04	1.19E-03
Putative uncharacterized protein BST1	BST1	A6NC48	6.23E-07	4.35E-05	6.97E-05
RAR-responsive protein TIG1	RARRES1	P49788	5.10E-06	6.49E-04	6.78E-05
Beta-G1	GUSB	P08236	1.24E-06	1.47E-04	2.80E-04
ATL-derived factor	TRDX	P10599	6.64E-04	5.53E-03	5.53E-03
Bactericidal/permeability- increasing protein-like 1	BPIL1	Q8N4F0	1.07E-04	2.04E-03	2.04E-03
1-Cys peroxiredoxin	AOP2	P30041	1.26E-07	9.56E-05	1.25E-05
Glypican-4	GPC4	O75487	7.06E-03		1.71E-03
BMP and activin membrane-bound inhibitor homolog	BAMBI	Q13145	6.41E-03	1.60E-03	
Beta-mannosidase	MANB1	O00462	4.46E-03	1.56E-03	
14 kDa thioredoxin- related protein	TXNDC17	Q9BRA2	7.12E-03	5.31E-03	

Supplementary Table 3. Proteins differentially expressed in urines of SS and SR patients with respect to healthy subjects.

Uniprot	Protein Names	Gene Names	average C	average SR	average SS	ANOVA p value	T test	T test	T test
							C-SR p value < 0.01	C-SS p value < 0.01	SR-SS p value < 0.05
Q14508	Epididymal secretory protein E4	HE4	10687200	25234500	28727200	5.49E-07	+	+	
P05067	Amyloid beta A4 protein	A4	1647730	2413870	2711590	5.67E-06	+	+	
E9PEA4	Uromodulin	UMOD	203406000	654286000	745013000	1.71E-06	+	+	
P05154	Protein C inhibitor;Serpins A5	PCI	1672740	4151090	2980300	8.14E-05	+	+	
P01133	Epidermal growth factor	EGF	17270000	27384700	27532100	1.80E-04	+	+	
P10643	Complement component C7	C7	989433	1562820	1527440	1.12E-03	+	+	
P11717	300 kDa mannose 6-phosphate receptor	IGF2R	3161.78	50814.2	60786	5.68E-04	+	+	
Q8NHP8	Phospholipase B domain-containing protein 2	PLBD2	78062.1	128132	170912	6.85E-05	+	+	
Q96J84-2	Nephrin 1	KIRREL	69860.6	101682	126063	4.97E-04	+	+	+
B9ZVU6	Butyrophilin subfamily 2 member A1	BTN2A1	2030540	3192960	2784120	4.42E-04	+	+	
Q92956	Tumor necrosis factor receptor superfamily member 14	HVEA	1519080	2132660	2387770	9.59E-04	+	+	
Q9ULI3	Protein HEG homolog 1	HEG1	174336	299069	445843	2.95E-04	+	+	
P08138	Gp80-LNGFR;Low affinity neurotrophin receptor p75NTR	NGFR	1658880	2625050	3024760	2.84E-03	+	+	
P49913	18 kDa cationic antimicrobial protein	CAMP	22708.4	60737.2	80544.7	8.59E-04	+	+	
P40121	Actin regulatory protein CAP-G	AFCP	1865.74	27820.2	25444.6	3.58E-03	+	+	
P98160	Basement membrane-specific heparan sulfate proteoglycan core protein;Perlecan	HSPG2	55720800	45340300	45894700	3.95E-03	+	+	
P01871-2	Ig mu chain C region	IGHM	1822730	744996	109178	3.10E-09	+	+	+
P06310	Ig kappa chain V-II region RPMI 6410		818128	414822	207229	3.01E-06	+	+	
Q969P0	CD81 partner 3	CD81P3	1905540	1365510	1105210	2.02E-05	+	+	
Q15828	Cystatin-6	CST6	3411430	1466690	1824310	5.25E-11	+	+	
F8W7U2	Cadherin family member 2	CDHF2	1196790	438179	488400	4.68E-08	+	+	
P01609	Ig kappa chain V-I region Scw		239737	55605.6	109614	1.26E-12	+	+	+
P01781	Ig heavy chain V-III region GAL		831979	538298	404472	2.48E-06	+	+	

P30041	1-Cys peroxiredoxin, Acidic calcium-independent phospholipase A2;	AOP2	73191.2	8733.56	0	1.26E-07	+	+	
P01593	Ig kappa chain V-I region AG		3007510	1797530	1709160	2.48E-05	+	+	
P06396	Gelsolin	GSN	15575400	7582180	8143730	5.13E-06	+	+	
	RAR-responsive protein								
P49788	TIG1;Tazarotene-induced gene 1 protein	RARRES1	125168	26013.1	7851.19	5.10E-06	+	+	
A6NC48	Putative uncharacterized protein								
	BST1	BST1	77576.6	9113.33	10639	6.23E-07	+	+	
P01210	Leu-enkephalin	PENK	86802.6	21782.1	29279.8	1.29E-06	+	+	
P08571	Monocyte differentiation antigen								
	CD14	CD14	9894330	5230700	4538340	5.10E-06	+	+	
P01764	Ig heavy chain V-III region VH26		633000	410081	323138	1.56E-05	+	+	+
Q9NPG4	Vascular cadherin-2	PCDH12	170943	81089.1	67593.4	6.04E-04	+	+	
P01834	Ig kappa chain C region	IGKC	196873000	115090000	105165000	1.28E-04	+	+	
P01130	Low-density lipoprotein receptor	LDLR	32075.9	8096.3	0	5.80E-05	+	+	+
P08236	Beta-glucuronidase	GUSB	270487	0	13409	1.24E-06	+	+	
P80748	Ig lambda chain V-III region LOI		4633150	2193790	2113390	3.14E-05	+	+	
Q5KU26	Collectin placenta protein 1	CLP1	437385	149447	141824	5.04E-05	+	+	
P08185	Transcortin	CBG	587858	231867	290087	9.41E-06	+	+	
Q9Y6R7	Fcgamma-binding protein antigen	FCGBP	1043850	313846	276794	5.20E-05	+	+	
B0UZ83	Complement component 4A	C4A	819324	504756	407431	1.42E-03	+	+	
P31025	Lipocalin-1	LCN1	557982	127465	238994	1.54E-06	+	+	+
P01765	Ig heavy chain V-III region TIL		1778340	694560	570923	1.87E-04	+	+	
P06702	Calgranulin-B	CAGB	181236	22628.1	27001.9	6.40E-05	+	+	
B5MDX4	Plasma glutamate carboxypeptidase	PGCP	273490	187818	152118	5.76E-04	+	+	
P17050	Alpha-galactosidase B	NAGA	188340	132043	104600	6.84E-04	+	+	
P01594	Ig kappa chain V-I region AU		175775	58481	74555.1	3.01E-04	+	+	
P01857	Ig gamma-1 chain C region	IGHG1	30536400	13989500	15389600	9.33E-05	+	+	
P36639	Nucleoside diphosphate-linked moiety X motif 1	MTH1	57059.2	32445.1	23160.7	3.72E-03	+	+	
P01019	Angiotensin family	AGT	791485	386492	353554	4.80E-04	+	+	
P07148	Fatty acid-binding protein 1	FABP1	381225	176389	159571	9.39E-04	+	+	
P01009	Serpin A1	AAT	13043800	10530000	8743900	2.61E-03	+	+	
P01598	Ig kappa chain V-I region EU		243488	147546	125403	1.39E-03	+	+	
P01611	Ig kappa chain V-I region Wes		54182.9	0	14642.9	1.10E-05	+	+	

P01767	Ig heavy chain V-III region BUT		482204	177843	210850	1.96E-03	+	+
P01860	Heavy chain disease protein	IGHG3	10069800	4513020	5642250	1.77E-04	+	+
Q9NPH3-5	Interleukin-1 receptor 3	C3orf13	160280	56101.9	83675	2.46E-04	+	+

List of the proteins that are significant both from the ANOVA test among the SS, SR and C groups and from the T test between SR vs C and SS vs C. Some of them are further significant upon T test between SS vs SR groups. + indicates proteins with a significant P value. The up-regulated proteins are colored in red, while in blue are the down regulated ones.

Supplementary Table 4. Proteins differentially expressed in urines of SS patients with respect to healthy and SR subjects.

Uniprot	Protein Names	Gene Names	average C	average Sr	average SS	ANOVA p value	T test C-SR p value < 0.01	T test C-SS p value < 0.01	T test SR-SS p value < 0.05
P19022	Cadherin-2	CDH2	834360	983067	1290010	1.49E-04		+	+
B2ZZ83	Filamin B	FLNB	70385.1	64416.2	171292	2.36E-05		+	+
Q96J84-2	Nephrin 1	KIRREL	69860.6	101682	126063	4.97E-04	+	+	+
P48745	CCN family member 3	CCN3	2945760	3102160	4289030	1.43E-04		+	+
Q8NDA2	Hemicentin-2	HMCN2	145006	105602	239112	6.43E-05		+	+
P68871	Beta-globin	HBB	727191	913361	3094950	5.80E-05		+	+
P55000	Anti-neoplastic urinary protein	ARS	6684520	6536890	11918000	9.11E-04		+	+
P69905	Alpha-globin	HBA1	372101	524845	2337730	2.23E-04		+	+
P51688	Sulphamidase	HSS	15104	0	85402.2	1.92E-05		+	+
Q4LDE5	CCP module-containing protein 22	C9orf13	0	0	124458	2.59E-06		+	+
P01871-2	Ig mu chain C region	IGHM	1822730	744996	109178	3.10E-09	+	+	+
Q96NY8	Nectin-4	LNIR	902834	1000230	342213	1.67E-11		+	+
Q12907	Vesicular integral-membrane protein VIP36	C5orf8	21902500	16990900	12191400	9.44E-06		+	+
P23284	Cyclophilin B	CYPB	86575.4	62030.9	4853.24	4.34E-06		+	+
Q92692	Nectin-2	HVEB	1174040	972492	687108	3.89E-05		+	+
Q9UN70	Protocadherin-2	PCDH2	315067	262459	167233	3.21E-04		+	+
P01609	Ig kappa chain V-I region Scw		239737	55605.6	109614	1.26E-12	+	+	+

P08582	Melanotransferrin	MAP97	1419330	1046850	482125	2.25E-05		+	+
Q92520	Protein FAM3C	FAM3C	194087	187310	82743.4	7.28E-05		+	+
Q06830	Peroxiredoxin-1	PAGA	130270	122666	23097.6	1.80E-04		+	+
O75594	Peptidoglycan recognition protein 1	PGLYRP	13791100	12718500	7112320	1.74E-03		+	+
P61769	Beta-2-microglobulin	B2M	4262030	3556140	1973610	3.71E-05		+	+
P53634	Cathepsin C	CPPI	698695	541780	287028	3.29E-05		+	+
P12109	Collagen alpha-1(VI) chain	COL6A1	4651830	4450430	2785390	1.03E-05		+	+
P15144	Alanyl aminopeptidase	ANPEP	4595820	4871130	2986940	1.85E-05		+	+
O95336	6-phosphogluconolactonase	PGLS	945914	869450	514002	7.51E-05		+	+
P01764	Ig heavy chain V-III region VH26		633000	410081	323138	1.56E-05	+	+	+
P14543	Nidogen-1	NID	5534320	4591030	3224710	1.33E-05		+	+
P16870	Carboxypeptidase E	CPE	503569	664615	260305	2.02E-07		+	+
P61970	Nuclear transport factor 2	NTF2	2865490	2598890	1497850	5.93E-05		+	+
P01130	Low-density lipoprotein receptor	LDLR	32075.9	8096.3	0	5.80E-05	+	+	+
Q8WZ75	Roundabout homolog 4	ROBO4	3924980	4146660	2282100	6.17E-04		+	+
Q07075	Aminopeptidase A	ENPEP	443876	363794	177483	7.25E-04		+	+
P54802	Alpha-N- acetylglucosaminidase	NAGLU	1860100	1502570	1047700	2.60E-04		+	+
P15309	Prostatic acid phosphatase	ACPP	7477940	7717390	3890110	5.38E-05		+	+
P01766	Ig heavy chain V-III region BRO		4309780	3018010	1577890	2.76E-03		+	+
Q08345-5	Cell adhesion kinase	CAK	28252.2	29754.2	2090.57	2.23E-03		+	+
P01591	Immunoglobulin J chain	IGCJ	3606150	4330490	2510860	7.06E-04		+	+
P19440	Gamma-glutamyltransferase 1	GGT	860472	1275160	519616	1.06E-07	+	+	+
P31025	Lipocalin-1	LCN1	557982	127465	238994	1.54E-06	+	+	+
P16278	Acid beta-galactosidase	ELNR1	1876400	1411530	831314	2.59E-03		+	+
Q86T13	Epidermal growth factor receptor 5	C14orf27	206510	170283	94397.6	4.41E-03		+	+
Q6UVK1	Chondroitin sulfate proteoglycan 4	CSPG4	2117460	1989790	1408460	8.51E-04		+	+
O75503	Ceroid-lipofuscinosis neuronal protein 5	CLN5	25310.2	28735.6	0	5.51E-03		+	+
Q99988	Growth/differentiation factor	GDF15	45900.2	54694.4	8766.43	1.94E-03		+	+

P05109	Calgranulin-A	CAGA	63706.7	30951.5	0	7.73E-03	+	+
P07288	Kallikrein-3	APS	6344130	6527100	3503180	5.88E-03	+	+
P16444	Dehydropeptidase-I	DPEP1	883913	882054	434238	3.71E-03	+	+
B7ZKJ8	inter-alpha-trypsin inhibitor heavy chain H4	ITIH4	7657560	4334620	2537050	4.54E-03	+	+
P50895	Auberger B antigen	BCAM	592655	645221	375206	2.60E-03	+	+
P09211	Glutathione S-transferase P	FAEES3	180927	264341	77522	1.45E-03	+	+

List of the proteins that are significantly regulated in salt sensitive hypertensive patients both from the ANOVA test among the SS, SR and C groups than from the T test between both SS vs C and SS vs SR. + indicates proteins with a significant P value .

Supplementary Table 5. Proteins differentially expressed in the urines of SR patients with respect to healthy and SS subjects.

Uniprot	Protein Names	Gene Names	average C	average SR	average SS	ANOVA p value	T test C-	T test C-	T test SR-
							SR p value < 0.01	SS p value < 0.01	SS p value < 0.05
O60494	Cubilin	CUBN	9108300	15471300	10299100	1.09E-06	+		+
P56537	Eukaryotic translation initiation factor 6;p27(BBP)	EIF3A	713612	1163410	773913	2.08E-06	+		+
P62937	Cyclophilin A	CYPA	240043	426806	274554	5.14E-05	+		+
P02649	Apolipoprotein E	APOE	502791	1026850	585406	3.02E-05	+		+
Q9H6Y7	E3 ubiquitin-protein ligase RNF167	LP2254	76992.2	302179	98648.5	4.06E-05	+		+
P16083	NRH dehydrogenase [quinone] 2	NMOR2	3236.56	44370.3	0	1.34E-07	+		+
Q7Z5L0	Vitelline membrane outer layer protein 1 homolog	UNQ6350	5848860	12107900	7728730	4.89E-05	+		+
P11117	Lysosomal acid phosphatase	ACP2	1467260	2680610	1073950	1.12E-07	+		+
Q7Z7M0	Epidermal growth factor-like protein 4	C19orf49	47322.7	127027	63362.5	1.70E-04	+		+
P98164	Megalyn	LRP2	9430350	13185600	9514830	1.82E-04	+		+
F2Z2J9	Phosphoglycerate mutase 1	CDABP0006	0	36981.1	5042.67	4.18E-05	+		+
Q9BVM4	Gamma-glutamylaminocyclotransferase	A2LD1	110565	184548	60791.4	1.89E-04	+		+

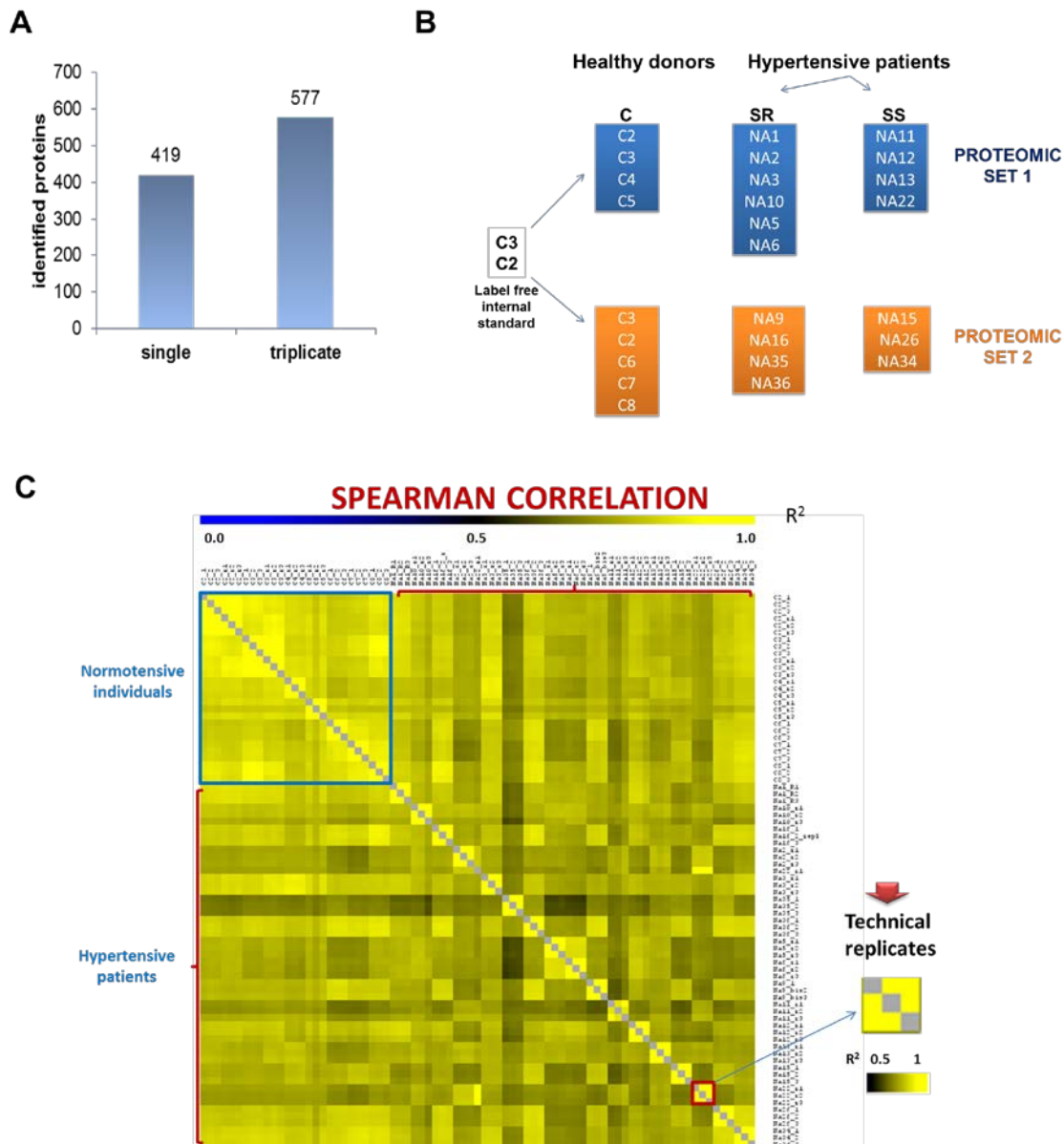
P06733	Alpha-enolase	ENO1	387013	789043	276908	1.75E-05	+		+
P19440	Gamma-glutamyltransferase 1	GGT	860472	1275160	519616	1.06E-07	+	+	+
Q96924	Receptor expressed in lymphoid tissues	RELT	99788.2	163820	97417.5	9.20E-04	+		+
A8KAH5	Increased sodium tolerance 1	IST1	142782	326882	138294	8.83E-04	+		+
E7EX29	Protein kinase C inhibitor protein 1	YWHAZ	118537	247597	89576.4	1.78E-04	+		+
P33908	Man(9)-alpha-mannosidase	MAN1A1	190392	440530	207286	6.58E-04	+		+
P22792	Carboxypeptidase N	ACBP	805257	1067150	629328	1.40E-04	+		+
Q12913	Density-enhanced phosphatase 1	DEP1	185248	293859	160737	2.76E-03	+		+
Q96KP4	Peptidase A	CN2	104461	272093	85360.5	3.60E-04	+		+
P62258	14-3-3 protein epsilon	YWHAE	118441	294041	79518.9	1.68E-04	+		+
P11142	Heat shock 70 kDa protein 8	HSC70	110468	215735	84544	4.89E-04	+		+
P13489	Placental ribonuclease inhibitor	PRI	7637.56	33906.1	0	8.79E-05	+		+
O75015	Fc-gamma RIII-beta	CD16B	2862.07	15064.7	273.648	1.91E-04	+		+
P05062	Fructose-bisphosphate aldolase B	ALDB	788532	1668180	497957	2.07E-04	+		+
P60174	Triose-phosphate isomerase	TPI	228846	354809	198067	2.83E-03	+		+
Q8NBJ4	Golgi phosphoprotein 2	C9orf155	2664270	3485860	2410920	1.47E-03	+		+
E9PDW4	Kidney-specific Na-K-Cl symporter	NKCC2	10018.074	31662	0	2.00E-04	+		+
P11279	Lysosome-associated membrane glycoprotein 1	LAMP1	1442830	2890410	2081080	2.26E-05	+		+
P10253	Lysosomal alpha-glucosidase	GAA	8808160	13659800	10517700	7.43E-05	+		+
E7ETH0	Complement factor I	CFI	693618	1153770	764619	2.66E-04	+		+
Q9HBB8	Cadherin-related family member 5	CDHR5	42840.4	157852	86984.7	2.70E-04	+		+
P29323	Ephrin type-B receptor 2	DRT	3038.15	31176.4	13283	2.59E-04	+		+
G3V1C5	Interleukin-18-binding protein	IL18BP	657628	1110960	787307	6.08E-04	+		+
A6NI73	CD85 antigen-like family member F	ILT11	177636	305699	194314	3.41E-03	+		+
Q9HD89	Adipose tissue-specific secretory factor	FIZZ3	545418	777524	580260	4.70E-03	+		+
P21810	Biglycan	BGN	262725	411524	290840	1.63E-03	+		+
Q9NP79	Vacuolar protein sorting-associated protein VTA1 homolog	C6orf55	1549	64221.7	12513.9	6.42E-04	+		+
Q01459	Di-N-acetylchitobiase	CTB	680619	450213	928955	3.59E-05	+		+
Q9H6X2	Anthrax toxin receptor 1	ANTXR1	178947	59506.1	168879	3.10E-06	+		+
P55285	Cadherin-6	CDH6	117824	41564.6	134877	5.13E-05	+		+
P78552	Cancer/testis antigen 19;Interleukin-13 receptor subunit alpha-1	IL13R	20987.1	3329.37	37562.2	5.19E-04	+		+

E7E566	Antigen CD42b-alpha	GP1BA	31893.2	0	17734.1	2.13E-05	+		+
Q9NP80	Calcium-independent phospholipase A2-gamma	BM-043	73581	10999.3	99534.8	1.61E-03	+		+
O00468	Agrin	AGRIN	2178220	1155250	1742900	1.02E-05	+		+
Q6UXB8	Cysteine-rich secretory protein 9	CRISP9	3502090	1471930	4233440	3.78E-04	+		+
Q14766-4	Latent-transforming growth factor beta-binding protein 1	LTBP1	250155	66001.6	212013	1.13E-04	+		+
P14151	CD62 antigen-like family member L	LNHR	36592	6687.52	40673.9	6.07E-03	+		+
O94919	Endonuclease domain-containing 1 protein	ENDOD1	4548390	2936060	4248800	6.63E-04	+		+
P05451	Lithostathine-1-alpha	PSPS	7763280	3150340	7828250	3.84E-04	+		+
P01871-2	Ig mu chain C region	IGHM	1822730	744996	109178	3.10E-09	+	+	+
P01609	Ig kappa chain V-I region Scw		239737	55605.6	109614	1.26E-12	+	+	+
F5H0Q5	Alpha-2-HS-glycoprotein	AHSG	19267800	9245760	14166800	2.57E-05	+		+
Q9NNX6	CD209 antigen	CD209	75859.6	11387.9	48267.9	1.96E-05	+		+
P04433	Ig kappa chain V-III region VG		6247100	3041310	4474860	4.25E-05	+		+
P31025	Lipocalin-1	LCN1	557982	127465	238994	1.54E-06	+	+	+
P02452	Alpha-1 type I collagen	COL1A1	197324	76273.5	159137	4.48E-04	+		+
Q96AP7	Endothelial cell-selective adhesion molecule	ESAM	136797	23986.9	88167.5	6.96E-04	+		+
Q9H9P2	Chondrolectin	C21orf68	27507.7	0	28397.9	9.23E-03	+		+
P01130	Low-density lipoprotein receptor	LDLR	32075.9	8096.3	0	5.80E-05	+	+	+

List of the proteins that are significantly regulated in salt resistant hypertensive patients both from the ANOVA test among the SS, SR and C groups than from the T test between SR vs C and SR vs SS. + indicates significant proteins.

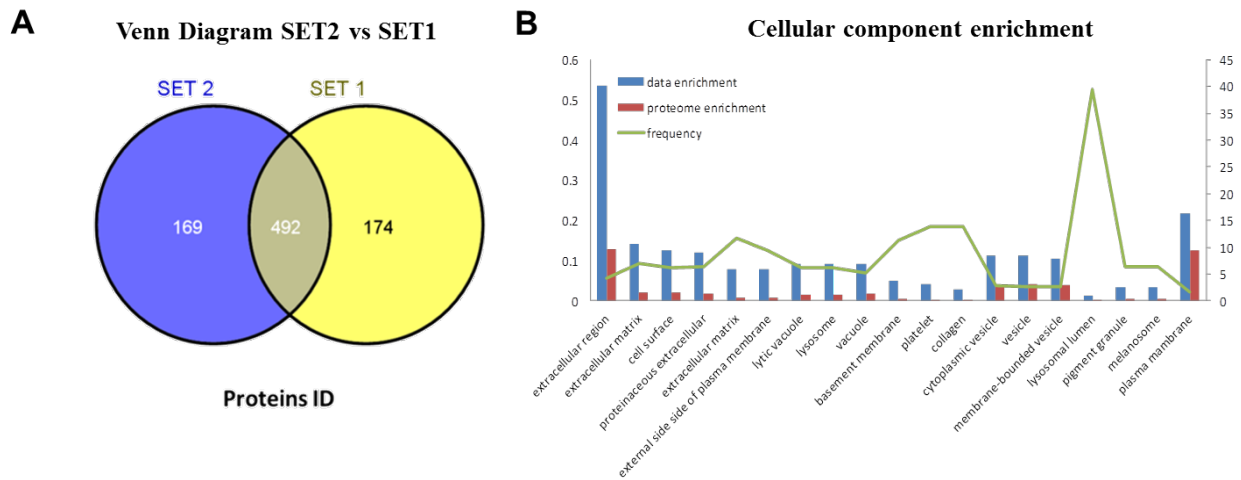
SUPPLEMENTARY FIGURES

Supplementary Fig. 1. Histogram representing the number of identified proteins from a single donor (A). Experimental design. (B). Spearman correlation of the intensities of all the proteins identified in all the samples analyzed (C).



Panel A: Histogram representing the number of identified proteins upon single or triplicate LC-MS/MS runs. Panel B: Experimental design. List of subjects analyzed by proteomic technique for the first and second set. Panels C: Spearman correlation of the intensities of all the proteins identified in all the samples analyzed including the three technical replicates.

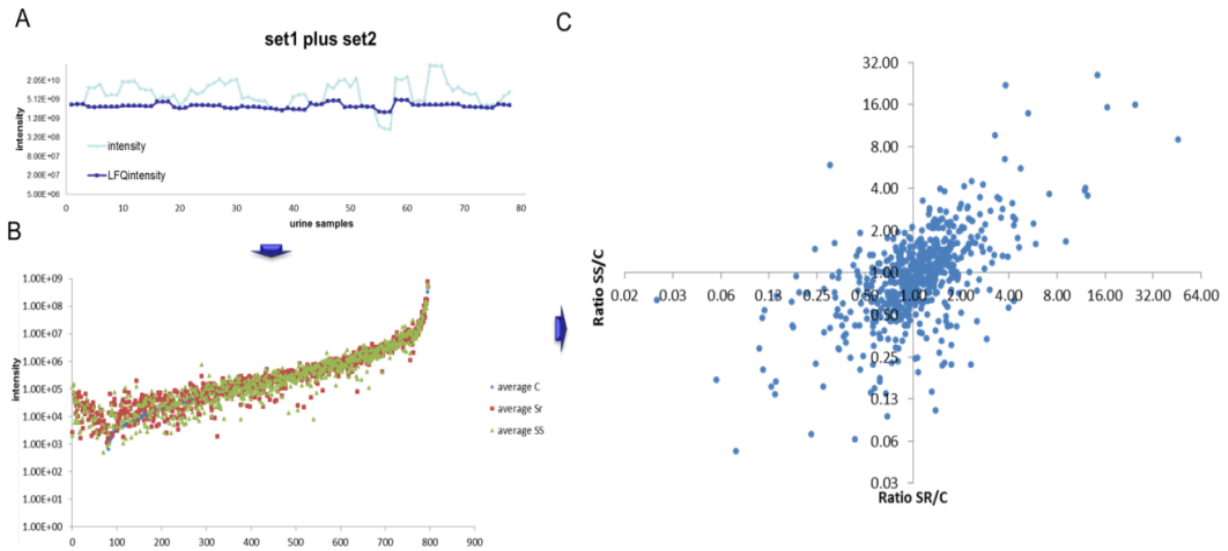
Supplementary Fig. 2. Venn diagram of the uniprot IDs of the proteins identified (A). GO cellular component enrichment analysis (B).



Panel A: Venn diagram of the uniprot IDs of the proteins identified in the first SET vs second SET.

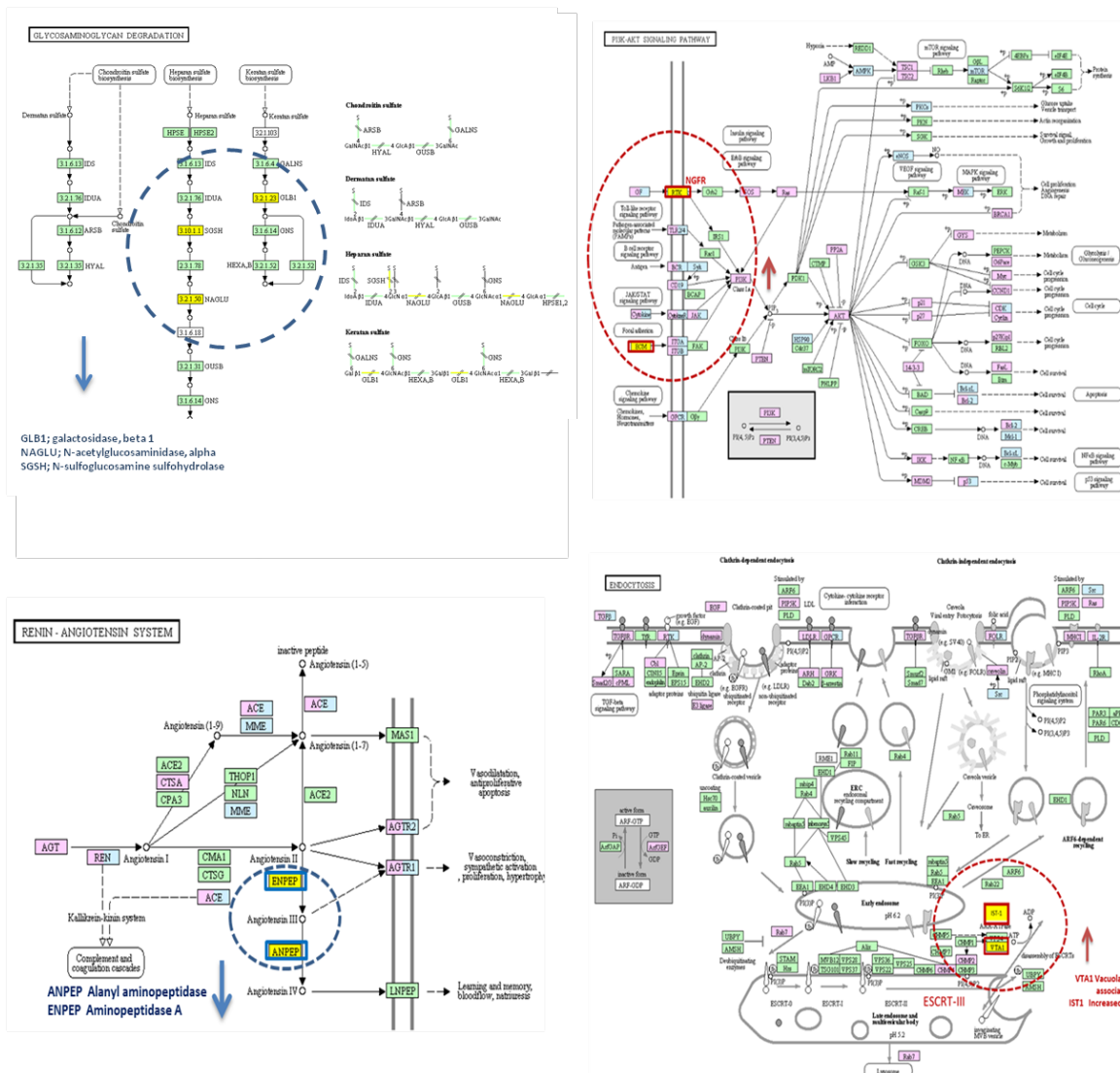
Panel B: GO cellular component enrichment analysis. Significantly over-represented GO cellular component terms for the urinary proteins identified in the entire dataset (p value < 0.01). This set of proteins was compared with the entire list of UniProtKB/Swiss-Prot. The ratio shown is the number of the urinary proteins identified over the entire UniProtKB/Swiss-Prot proteins annotated to each GO term.

Supplementary Fig. 3. Effect of the normalization on the total intensities for each sample in the entire dataset (A). Scatter plot of intensities averaged among the three groups: SS, SR and C for each protein identified (B). Plot of the ratios of proteins intensities for SS/C vs SR/C (C).



Panel A shows the effect of the normalization on the total intensities for each sample in the entire dataset (comparison of the summed intensities and normalized label free LFQ intensities of all the proteins per sample). Panel B Scatter plot of intensities averaged among the three groups: SS, SR and C for each protein identified. This plot gives an indication of the relative abundance of a given protein among the groups. Panel C: the ratios of proteins intensities are plotted for SS/C vs SR/C in order to follow the behavior of protein abundances of the patients vs healthy donors. The majority of these ratios show the same profile, precisely the majority of the proteins up regulated in SS patients are also up regulated in SR patients and vice versa.

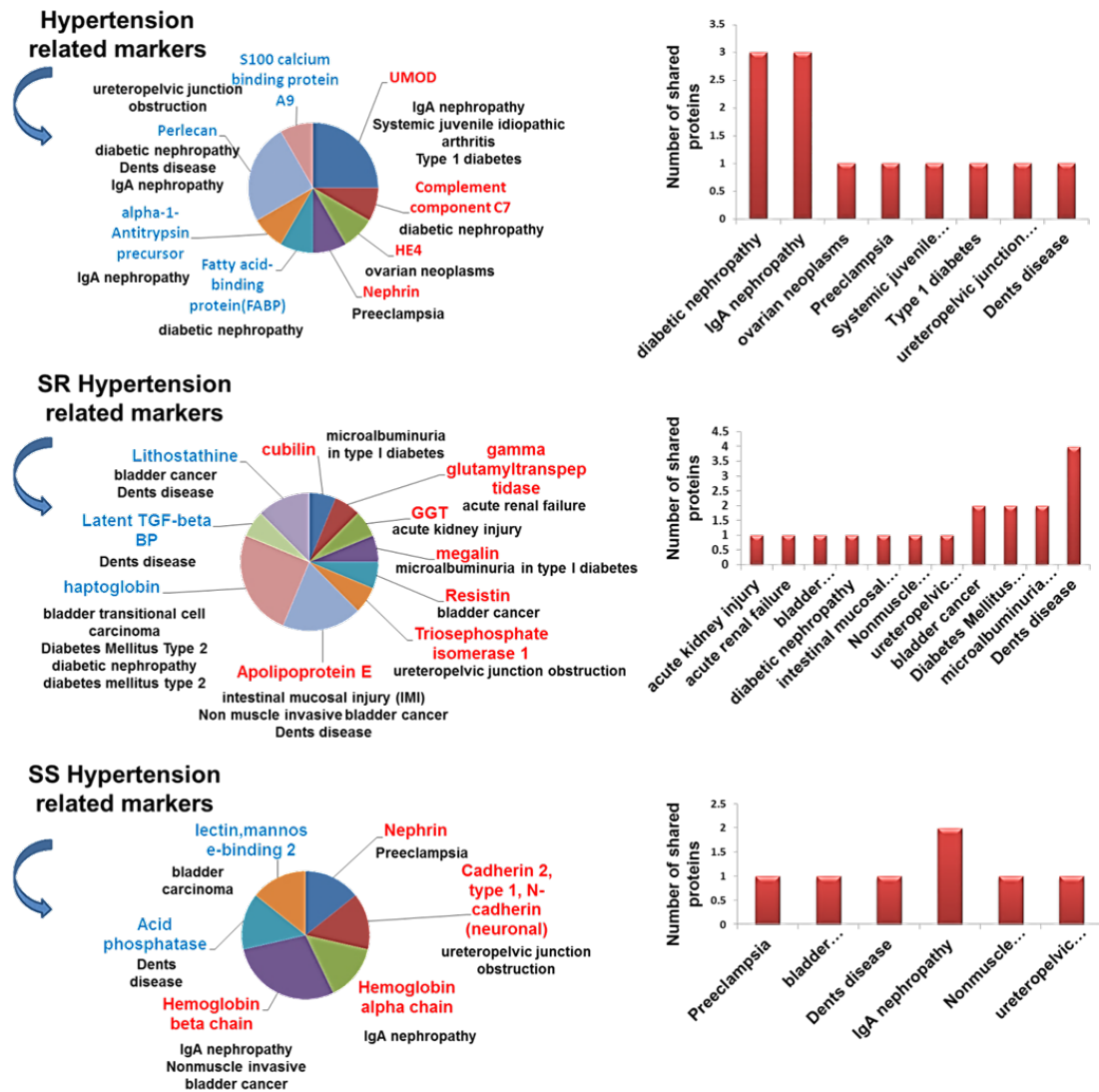
Supplementary Fig. 4. KEGG pathway analysis of the significantly modulated proteins.



Proteins found modulated were underlined. The down-regulated proteins are circled in blue while the up-regulated ones are circled in red.

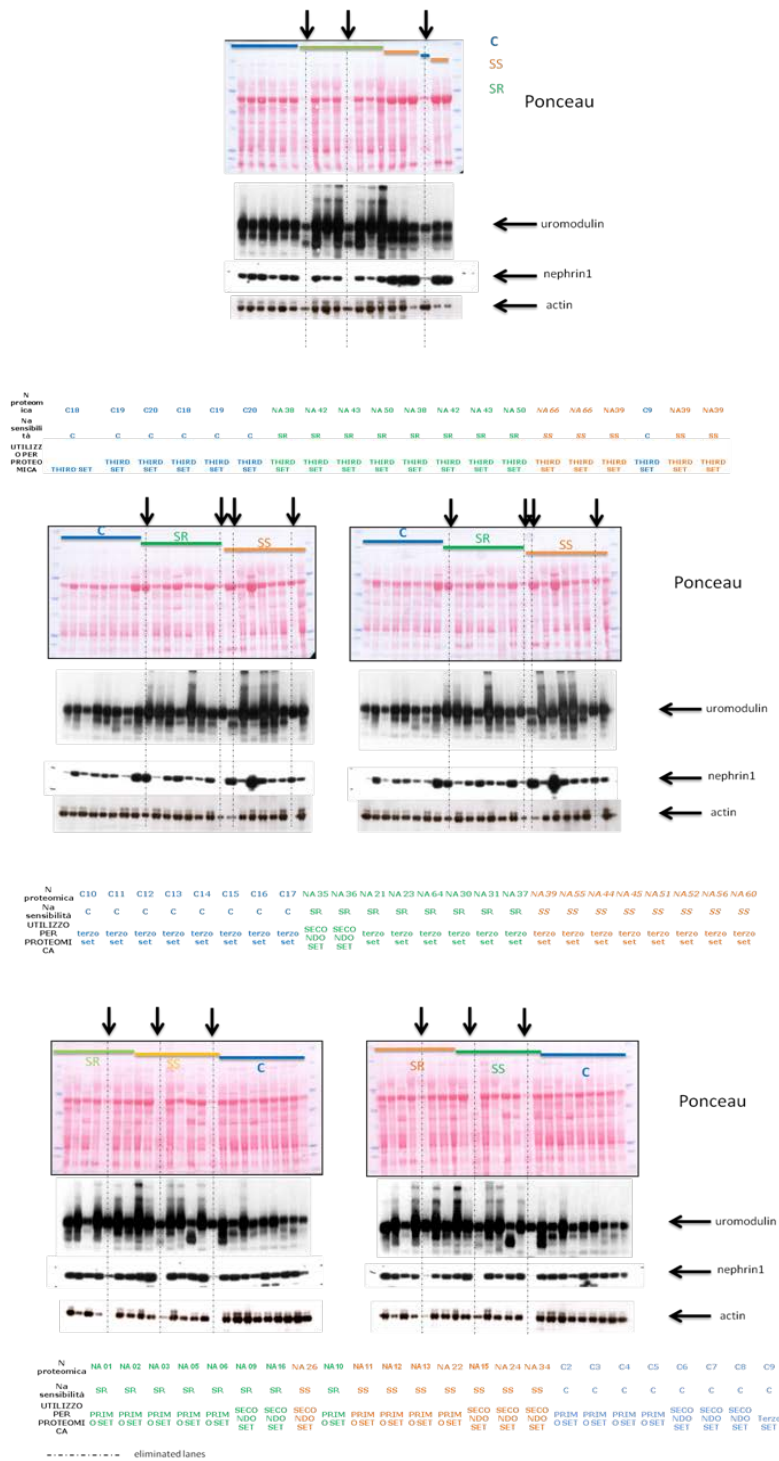
Supplementary Fig. 6. Analysis of the modulated proteins already published as biomarkers candidates in urine.

Urinary Protein Biomarker Database



The Urinary Proteins Biomarker Database was queried. (Left panels) Pie charts of the up regulated (red colored) and down regulated (blue colored) proteins found in the database with their associated pathologies. (Right panels) Histograms in terms of number of proteins matched in the database which share the same pathology are depicted for the three groups of subjects as indicated.

Supplementary Fig. 7. Validation by WB analysis of nephrin1 and uromodulin on a larger cohort of patients (19 healthy donors, 16 SR and 15 SS)



Ponceau and western blot analysis using antibodies against the proteins as indicated from 20 micrograms of concentrated urines from the patients as indicated. The symbols C, SS, SR stay for control, salt sensitive and salt resistant patients respectively.