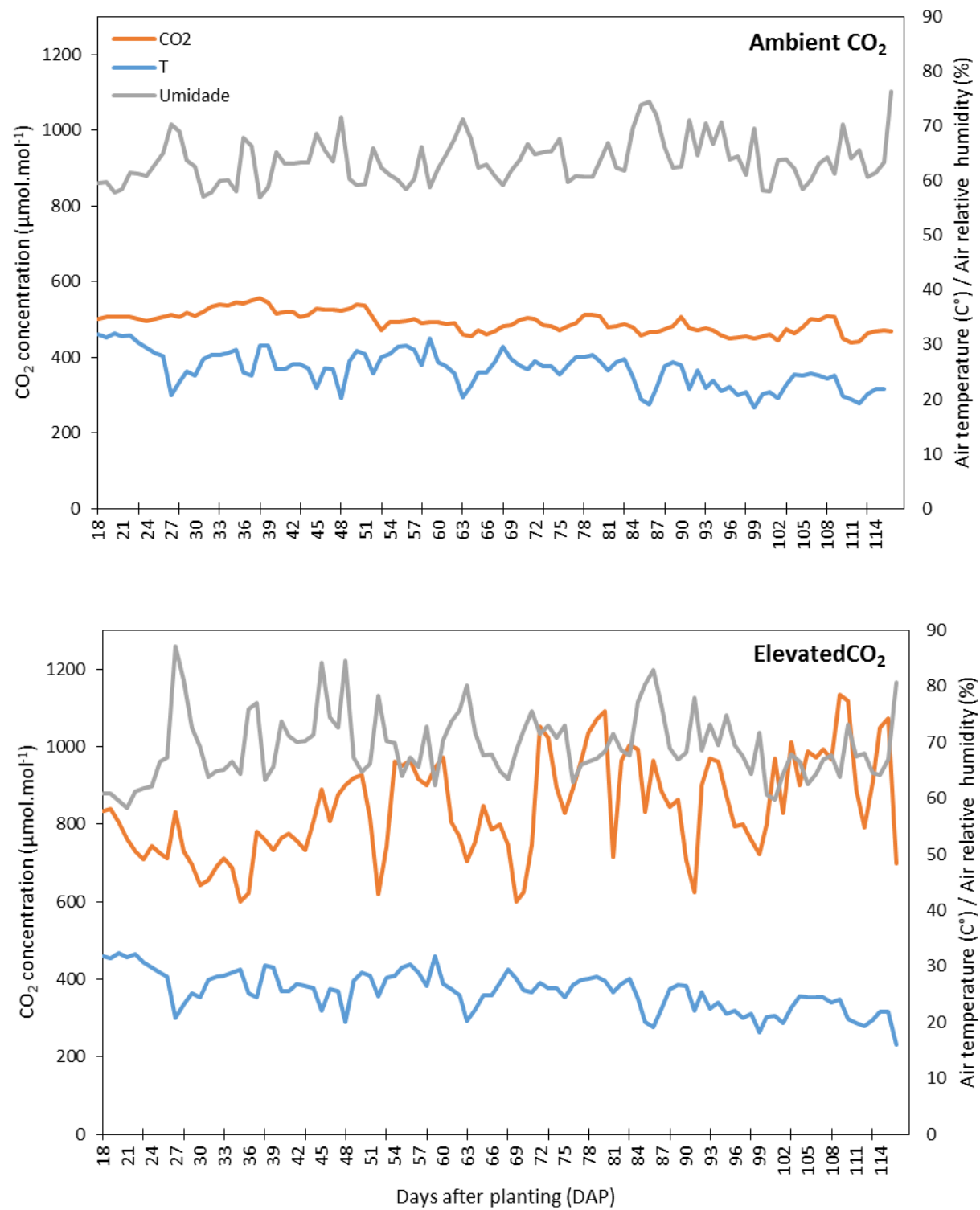


Supplemental Fig S1. Heatmap comparing the amount of metabolites among organs in *Sorghum bicolor* (cv. BRS 330). Independently of treatment or date of harvest, some metabolites were higher in **(A)** grains, **(B)** leaf, and **(C)** prop roots.



Supplemental Fig S2. Atmospheric CO₂ concentration (μmol.mol⁻¹), air temperature and air relative humidity (%) inside the open-top chambers (OTCs) with ambient or elevated CO₂ along the experiment with *Sorghum bicolor*, cv. BRS330. $n=2$. CO₂ concentrations averaged 482 ± 27 μmol.mol⁻¹ in ambient [CO₂] chambers and 840 ± 130 μmol.mol⁻¹ in elevated [CO₂] chambers.