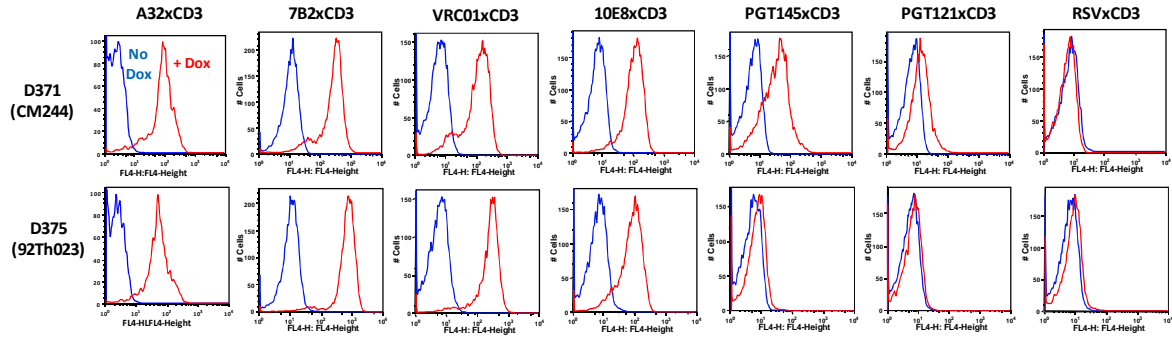
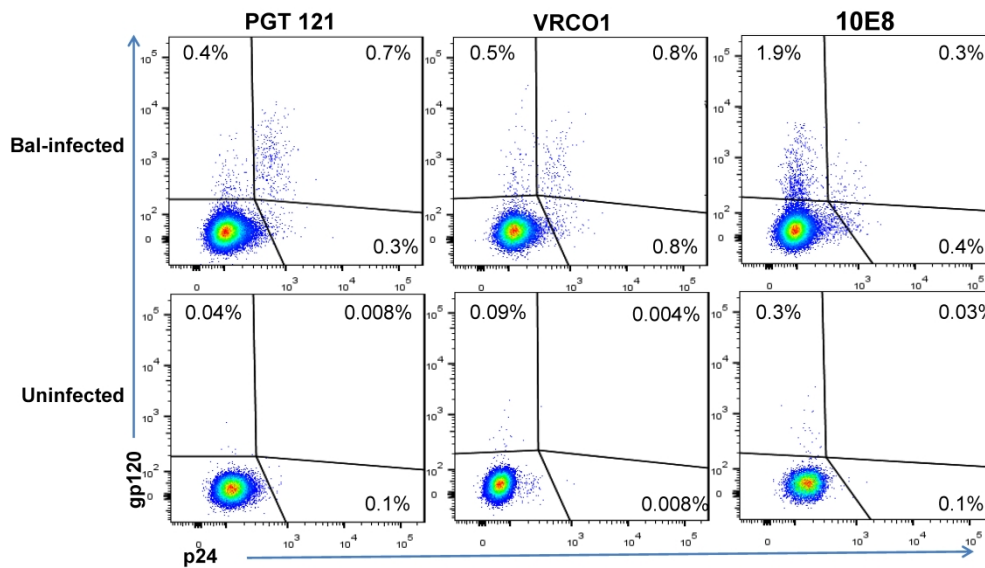


**A****B**

**Supplementary Fig. 1. Cell surface binding. (A) HIVxCD3 DART binding to Env-transfected cells.**

Histograms represent the relative levels of HIVxCD3 DART binding to HEK293-D371 cells expressing CM244 subtype AE *Env* (upper panels) and HEK293-D375 cells expressing subtype AE 92Th023 *Env* (lower panels) in the absence (blue lines) or presence (red lines) of doxycycline (dox), which induces *Env* expression. **(B) Parental anti-HIV *Env* IgG binding to HIV-infected cells.** Unstimulated CD4 T cells were mock-infected or infected with HIV-1 BaL. After 5 days in culture, cells were stained with anti-p24 and biotinylated forms of the indicated bNAbs prior to FACS analysis.