

SUPPLEMENTARY MATERIAL

Supplementary Table-1

Color scales with the associated hex-color values used for CVR, ssCVR and τ maps.

Supplementary Table-2 - Patient Characteristics

Supplementary Figure 1

Maps of CVR, z-CVR and z- τ for patients number 01 to 10.

Color scales are provided in Figures 4, 5, 6 and Supplementary Table-1

Supplementary Figure 2

Maps of CVR, z-CVR and z- τ for patients number 11 to 20.

Color scales are provided in Figures 4, 5, 6 and Supplementary Table-1

Supplementary Table 1

Color scales with the associated hex-color values used for CVR, ssCVR and τ maps.

| CVR / ssCVR | Hex-color values for a discrete color scale |
|---------------|---|
| 0.65 : 0.70 | #5B004E |
| 0.45 : 0.65 | #890056 |
| 0.35 : 0.45 | #C80041 |
| 0.30 : 0.35 | #DC0000 |
| 0.27 : 0.30 | #EF0300 |
| 0.24 : 0.27 | #EF2200 |
| 0.20 : 0.24 | #FF3900 |
| 0.15 : 0.20 | #DC4A00 |
| 0.10 : 0.15 | #DC7800 |
| 0.05 : 0.10 | #FFAC00 |
| 0.025 : 0.05 | #FFFE2A |
| 0 : 0.025 | #FFE288 |
| 0 : -0.025 | #B8FFD9 |
| -0.025 : 0.05 | #71FFE6 |
| -0.05 : -0.10 | #A0E3FF |
| 0.10 : -0.15 | #42C7FF |
| -0.15 : -0.20 | #9688FF |
| -0.20 : -0.30 | #632AFF |
| -0.30 : -0.40 | #500C80 |
| -0.40 : -0.70 | #120089 |

| Z scores | Hex-color values for a discrete color scale |
|--------------|---|
| 1.75 : 2 | #990000 |
| 1.5 : 1.75 | #FF0000 |
| 1.25 : 1.5 | #FF6600 |
| 1 : 1.25 | #FF9933 |
| 0.5 : 1 | #FFFF00 |
| 0 : 0.5 | #FFF0CC |
| 0 : -0.5 | #CCFFFF |
| -0.5 : -1 | #00CCFF |
| -1 : -1.25 | #FF99FF |
| -1.25 : -1.5 | #CC99FF |
| -1.5 : -1.75 | #6600CC |
| -1.75 : -2 | #000033 |

| τ (ssCVR>0) | Hex-color values for a continuous color scale |
|------------------|---|
| 100 | #009900 |
| 90 | #00FF00 |
| 50 | #FFFF00 |
| 40 | #FFFF00 |
| 0.01 | #FF0000 |

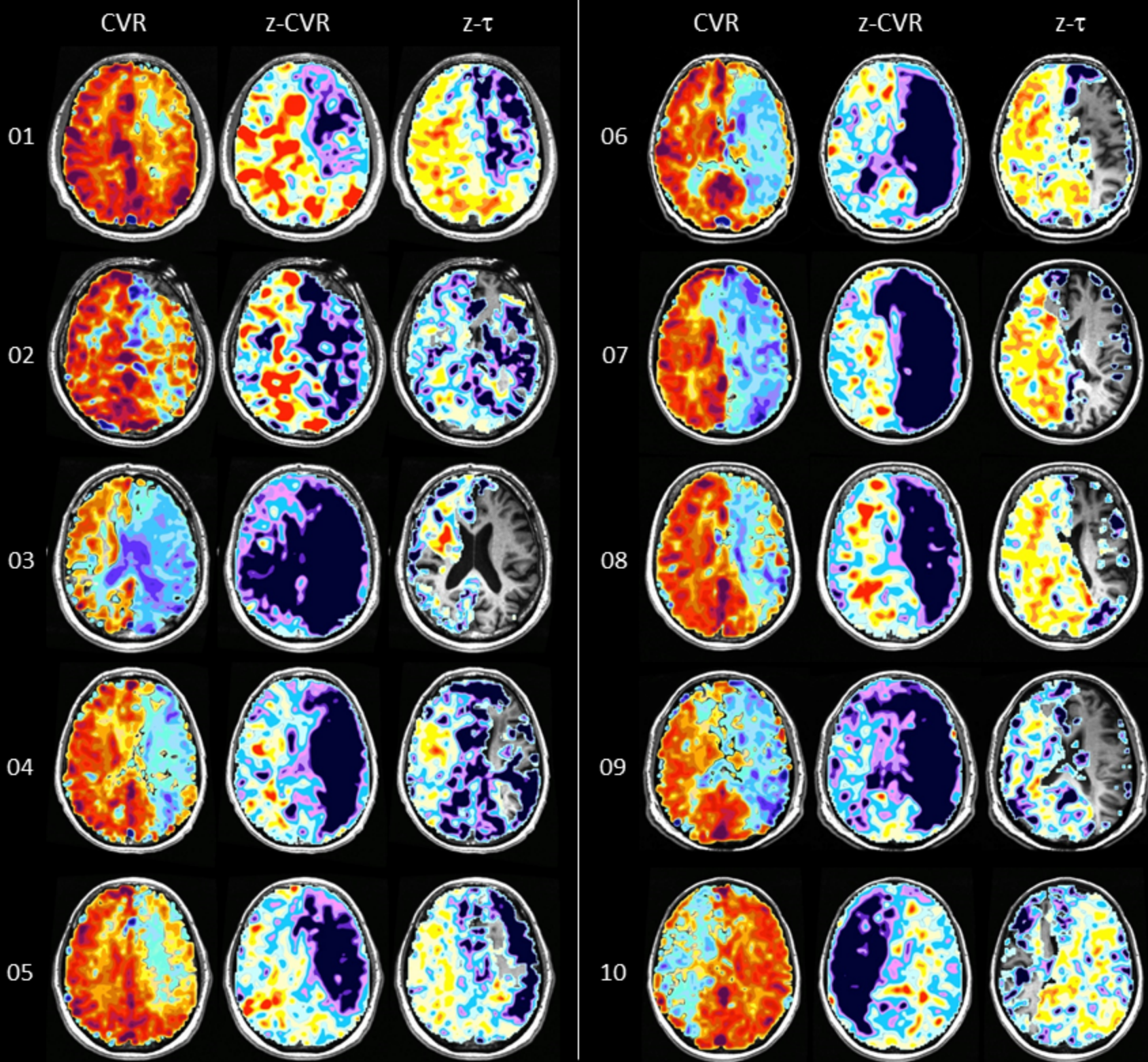
| τ (ssCVR<0) | Hex-color values for a continuous color scale |
|------------------|---|
| 100 | #9F00FF |
| 50 | #0000FF |
| 0 | #00FFFF |

Supplementary Table 2. Patient Characteristics

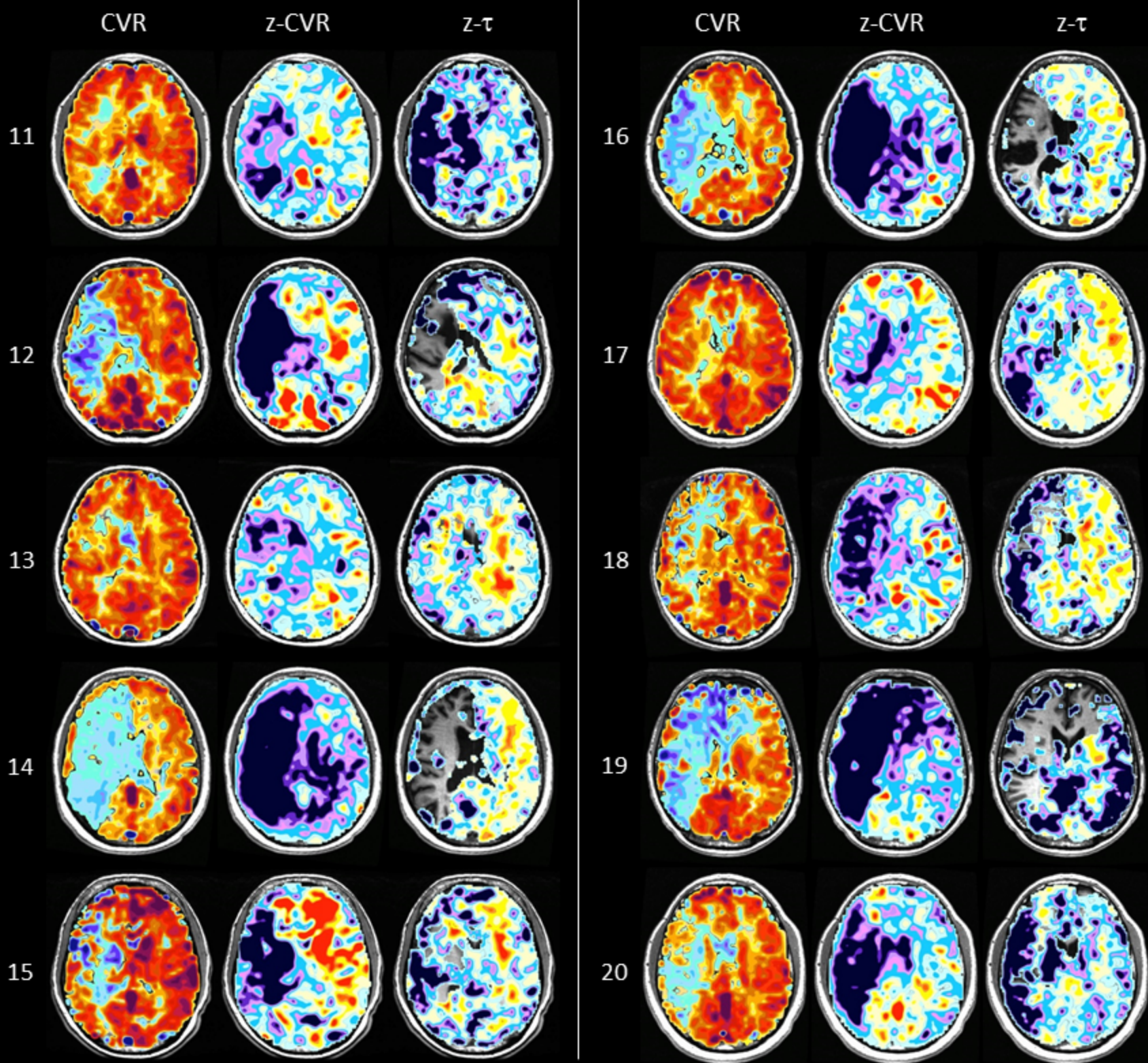
| Case No. | Age, Years | Sex | Side of Steno-occlusive Disease | Angiographic Findings, Affected hemisphere | Angiographic Findings, Unaffected Hemisphere |
|----------|------------|-----|---------------------------------|--|--|
| 01 | 53 | M | L | High-grade supraclinoid ICA stenosis | No abnormality |
| 02 | 63 | M | L | ICA occlusion at carotid siphon | No abnormality |
| 03 | 83 | M | L | Occlusion of supraclinoid ICA, hypoplastic P1, large left pcom. | No abnormality |
| 04 | 75 | M | L | Proximal ICA occlusion near bifurcation | Hypoplastic right vertebral |
| 05 | 55 | M | L | High-grade petrous ICA stenosis, small cavernous portion, narrow M1 segment, narrow A1 segment | No abnormality |
| 06 | 63 | M | L | ICA occlusion at carotid siphon | No abnormality |
| 07 | 54 | F | L | ICA occlusion at carotid siphon | No abnormality |
| 08 | 67 | F | L | ICA occlusion at supraclinoid segment | No abnormality |
| 09 | 74 | M | L | ICA occlusion at carotid siphon | No abnormality |
| 10 | 59 | M | R | Distal ICA occlusion | No abnormality |
| 11 | 35 | M | R | High-grade cervical ICA stenosis, hypoplastic M1 segment | No abnormality |
| 12 | 60 | M | R | ICA occlusion at origin | 30% cavernous ICA stenosis |
| 13 | 70 | M | R | ICA occlusion at carotid siphon | No abnormality |

| | | | | | |
|----|----|---|---|---|---|
| 14 | 85 | M | R | ICA occlusion at carotid bifurcation in neck | No abnormality |
| 15 | 67 | M | R | High-grade ICA stenosis at carotid siphon, hypoplastic M1 segment | No abnormality |
| 16 | 62 | F | R | Supraclinoid ICA occlusion | No abnormality |
| 17 | 25 | M | R | High-grade ICA stenosis near termination, narrow A1 and M1 segments | No abnormality |
| 18 | 79 | M | R | High-grade stenosis near carotid bifurcation in neck | Mild stenosis in proximal extracranial ICA |
| 19 | 56 | M | R | ICA occlusion at cervical segment | Mild ICA stenosis after carotid bifurcation |
| 20 | 46 | M | R | ICA occlusion | No abnormality |

M indicates male; F, female; L, left; R, right; PCA, posterior cerebral artery; ICA, internal carotid artery



Supplementary Figure-1



Supplementary Figure-2