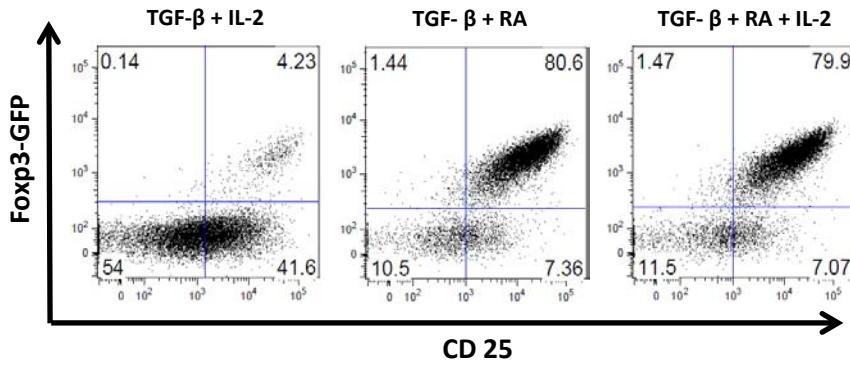


Supplementary figure 1: Intestinal inflammation as determined by changes in body weight after anti-CD3 antibody treatment. Mice were injected intraperitoneally two times (day 1 and 3) with either anti-CD3 antibody or PBS as a control. Body weight was recorded daily from day 1 to 7. The changes in body weight is expressed as a percentage of the initial weight at day 1. Mean \pm SEM are shown.

A-



B-

