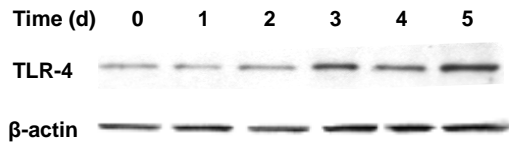
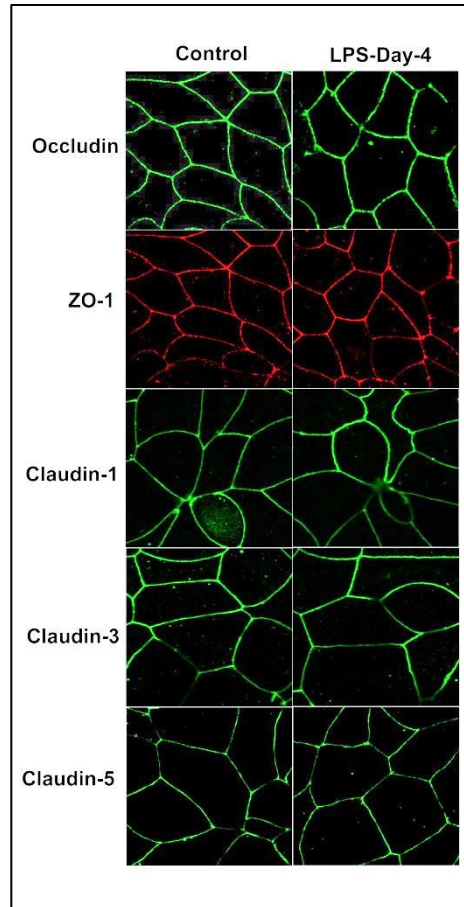


Supplemental Figure 1



Supplemental Figure 1. Time-course effect of LPS (0.3 ng/ml) on TLR-4 expression in Caco-2 monolayers. Caco-2 cells were treated with LPS (0.3 ng/ml) basolaterally for 5 days. The expression of TLR-4 was determined by Western blot.

Supplemental Figure 2



Supplemental Figure 2. Effect of LPS on epithelial tight junction (TJ). LPS treatment in the Caco-2 cells did not have significant effect on localization of occludin, ZO-1 and claudin-1, claudin-3, and claudin-5 on day 4 compared to control. Green-Alexa Flour-occludin,claudin-1,claudin-3 and claudin-5. Red-Cy3-ZO-1.