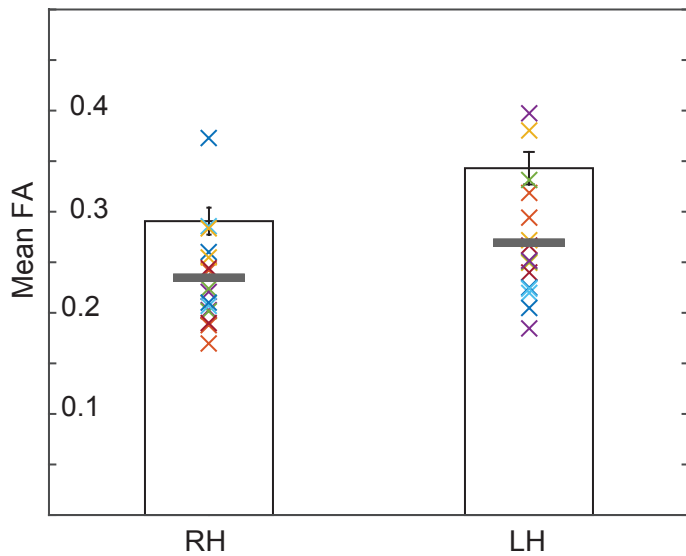


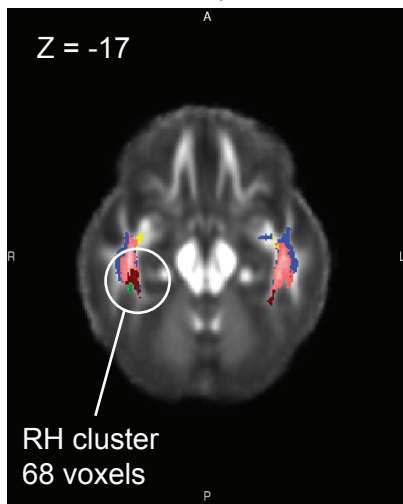
ILF and IFOF tracts and FFA fibers: Voxel-wise comparisons within tracts and fibers of interest (Interindividual variability in DP subjects)

a. Fractional anisotropy in RH and LH clusters

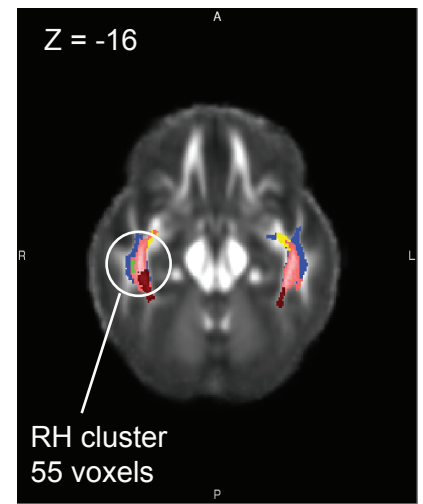
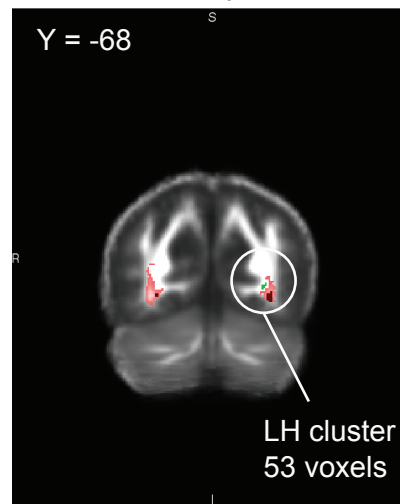


ILF and IFOF tracts and FFA fibers: Voxel-wise comparisons within tracts and fibers of interest (other metrics at $p < 0.005$ uncorrected and greater than 40 voxels)

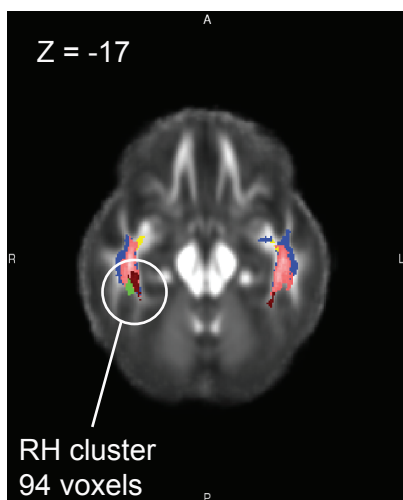
c. Mean Diffusivity (DP > controls)



e. Axial Diffusivity (Controls > DP)



d. Radial Diffusivity (DP > controls)



f. Fractional Anisotropy (DP > controls)

