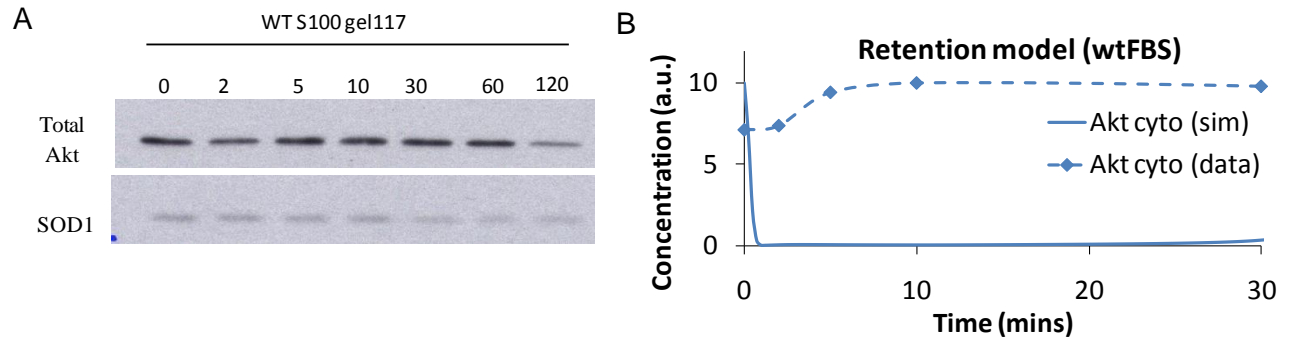


Supplemental Material for “Non-Canonical Activation of Akt in Serum-stimulated Fibroblasts, Revealed by Comparative Modeling of Pathway Dynamics”



Supplemental Figure S3. (A) Time-series measurements of total Akt in the cytosol showed (B) qualitative disagreement with simulations of the retention model, suggesting that the retention model alone is insufficient to explain the data.