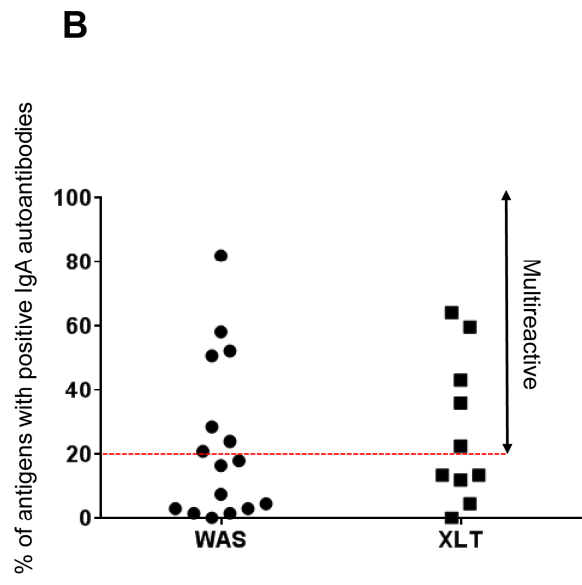
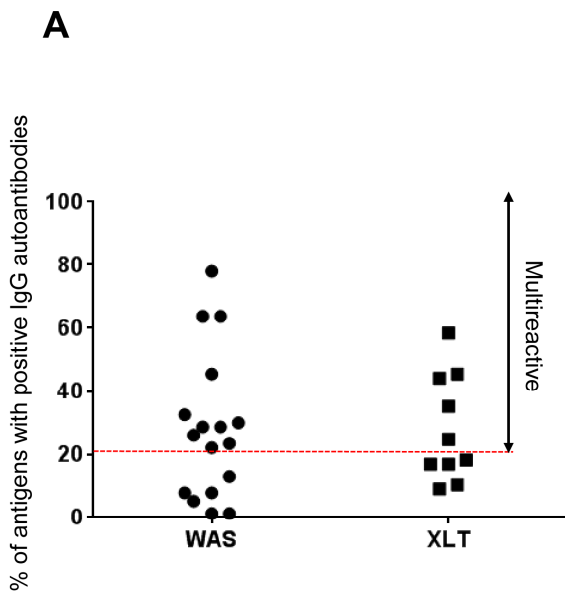


## Legends to Online Supplemental Figures

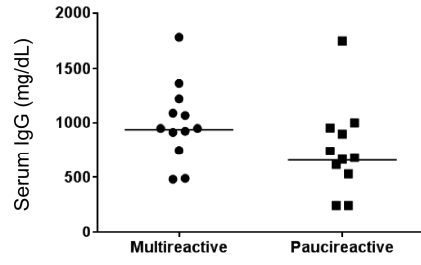
**Fig. E1.** Percentage of self-antigens for which IgG (panel A) and IgA (panel B) 580 autoantibodies were demonstrated in WAS and XLT patients.

**Fig. E2.** IgG (panel A) and IgA (panel B) serum levels in multireactive and in paucireactive patients with WAS/XLT.

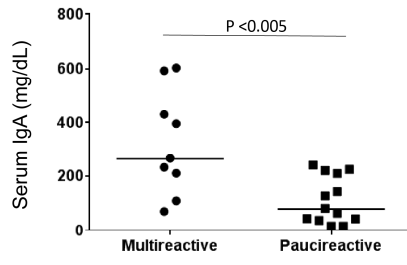
**Fig. E3.** Frequency of positivity for the 25 most common autoantibodies (panels A and B). Panel C shows Relative Autoantibody Reactivity (RAR) values for two IgG autoantibodies (to fibrinogen IV and mitochondrial antigen) that were significantly increased in XLT and WAS patients as compared to healthy controls.

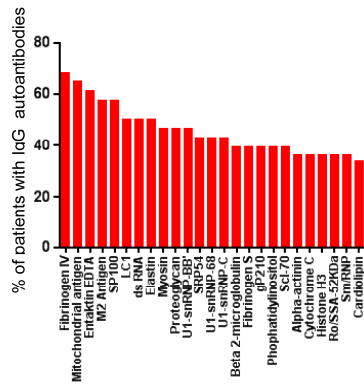
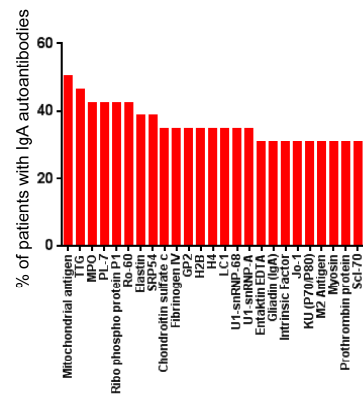


**A**



**B**



**A****B****C**