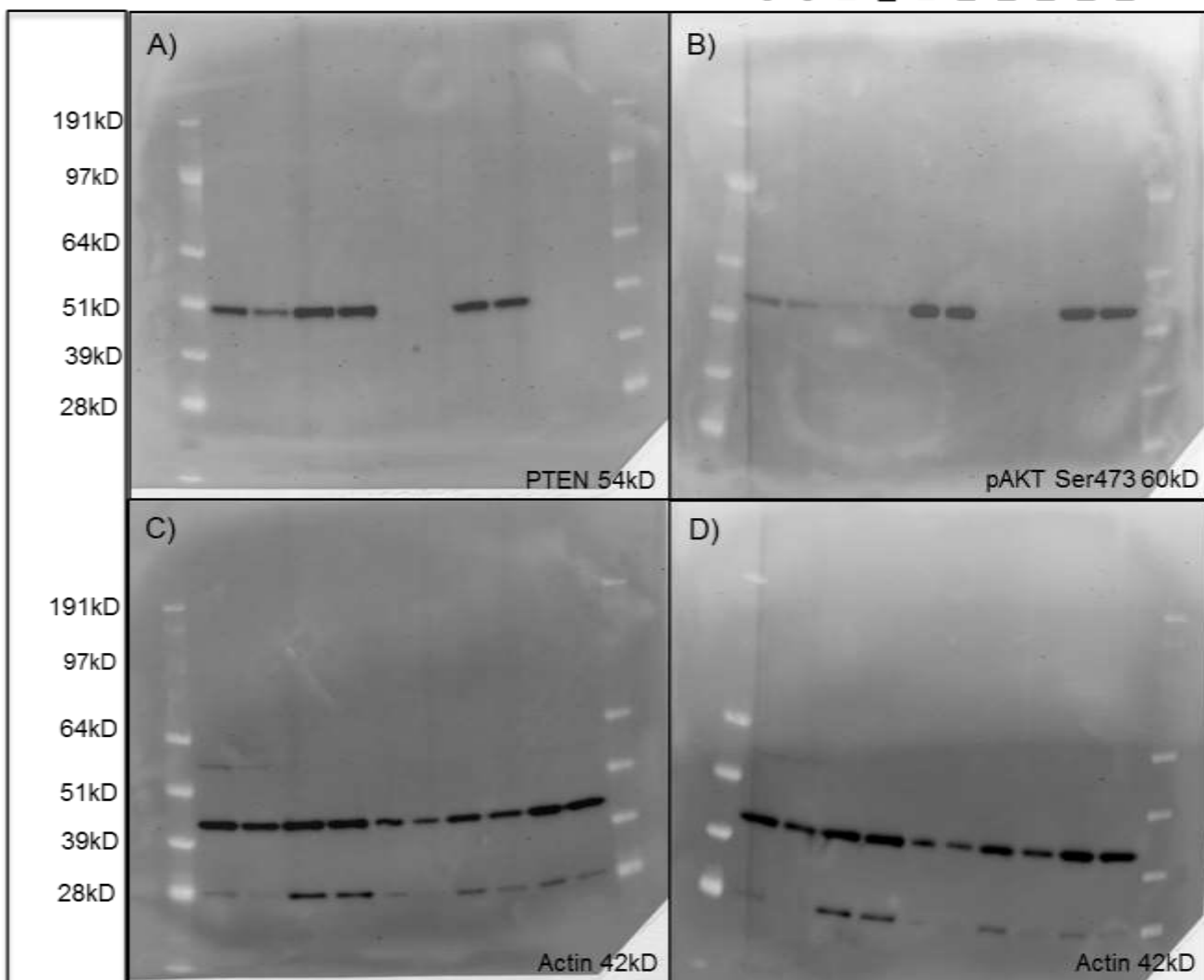


Ladder CWR22Rv1 CWR22Rv1+IFN $\gamma$  LAPC4 LAPC4+IFN $\gamma$  PC3 PC3+IFN $\gamma$  Du145 Du145+IFN $\gamma$  E006AA E006AA+IFN $\gamma$  Ladder

Ladder CWR22Rv1 CWR22Rv1+IFN $\gamma$  LAPC4 LAPC4+IFN $\gamma$  PC3 PC3+IFN $\gamma$  Du145 Du145+IFN $\gamma$  E006AA E006AA+IFN $\gamma$  Ladder



### Supplementary Figure 3 (Fig S-3)

Full Western blots. A) PTEN clone D3.4XP, 30 minute exposure. This protein ran slightly smaller than its apparent molecular weight of 54kD under these conditions. B) pAKT Ser473, 30 minute exposure. C & D) Beta actin companion to insets A & B, respectively. The same blots were stripped prior to re-blotting with beta actin to confirm the concentration of protein loaded in each well. All wells show similar amounts of beta actin with the exception of PC3 where there was slightly less protein however these two samples were comparable to each other. Both C&D are 10 minute exposures. CWR22Rv1, Du145, and LAPC4 have all been previously described as having intact PTEN; whereas E006AA and PC3 have been previously described as having loss of PTEN thus serving as internal positive and negative controls for this study. The protein reference ladder is from Invitrogen (Grand Island, NY, USA). Apparent molecular weights listed are based on their references using NuPage MOPS buffer. Myosin (191kD); Phosphorylase (97kD); BSA (64kD); Glutamic Dehydrogenase (51kD); Alcohol Dehydrogenase (39kD); Carbonic Anhydrase (28kD).