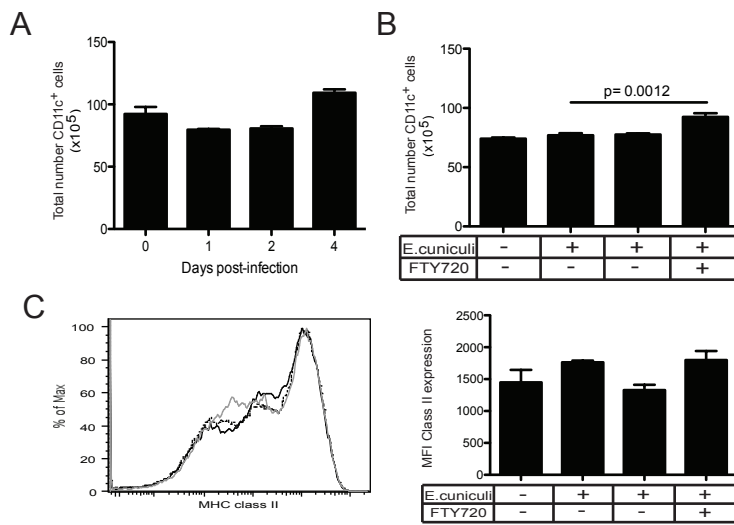


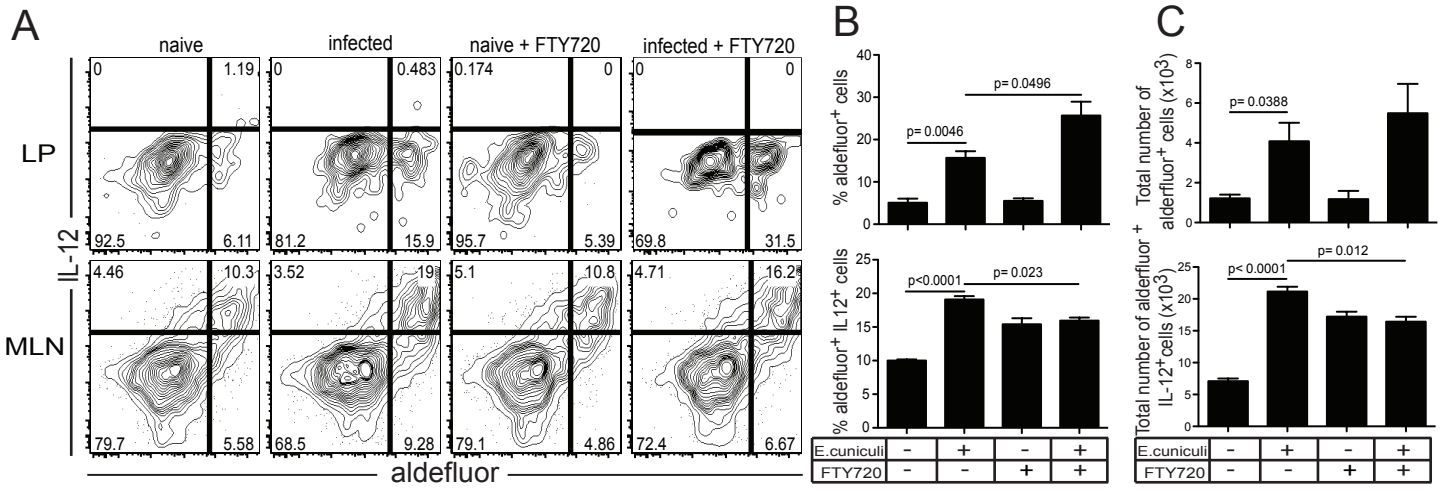
Supplementary figure 1

A) Parasite burden was measured at day 14 p.i. in the spleen, liver and gut from mice infected per orally (circle) or i.p. (square) with  $2 \times 10^7$  spores. B) *E. cuniculi* serotiter was measured in the serum of these animals at the same time point. C) The parasite burden in the stools of each animal was quantified every other day until day 14 p.i. ND= not detectable. Data represent 2 pooled experiments with at least 5 mice/group.



## Supplementary figure 2

A) The number of MHC class II<sup>+</sup> CD11c<sup>+</sup> DC in the spleen of C57BL/6 mice was measured at different time-points p.i. B) The number of MHC class II<sup>+</sup> CD11c<sup>+</sup> DC in the spleen of animals treated with FTY720 was assessed at day 2 p.i. C) The histogram shows MHC class II expression by splenic CD11c<sup>+</sup> cells at day 2 p.i. in mice treated or not with FTY720 while graph represents MFI for MHC class II. Experiment was performed twice and data are representative of one experiment.



Supplementary figure 3

A) RALDH activity (measured by aldefluor fluorescence) and IL-12 expression (YFP) in CD11b-CD8<sup>+</sup> DC subset was compared in LP and MLN of IL-12p40 YFP mice at day 2 p.i. Dot plots are gated on live CD11c<sup>+</sup>CD11b-CD8<sup>+</sup> subset. Graphs represent frequency (D) and total number (C) of IL-12<sup>+</sup>aldefluor<sup>+</sup> cells in MLN (top) and aldefluor<sup>+</sup> cells only in the LP (bottom). Experiment was performed twice and data are representative of one experiment.