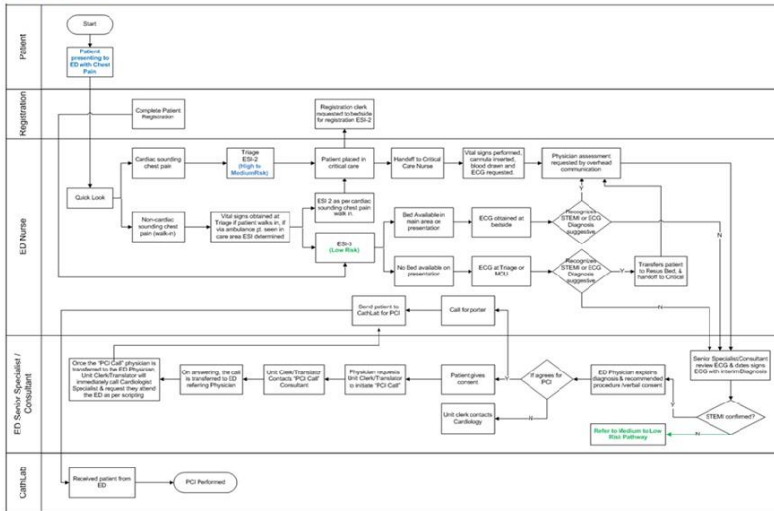
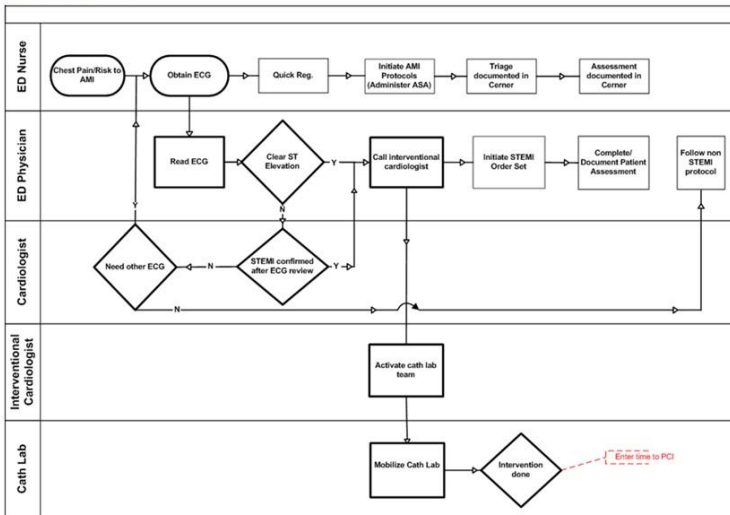


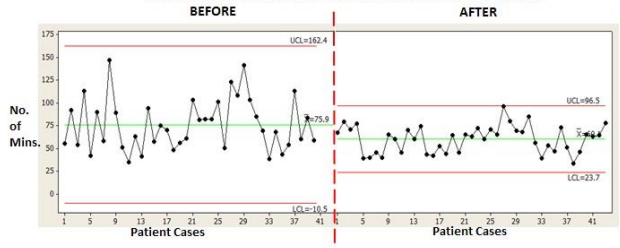
INITIAL PROCESS



IMPROVED PROCESS



PRIMARY PCI TIMES (BEFORE AND AFTER THE PROJECT)



PERCENT OF PATIENTS WITH PRIMARY PCI DONE WITHIN 90 MINUTES BEFORE THE PROJECT (SEP - DEC 2011) & AFTER THE PROJECT (JAN - AUG 2012)

