

Role of KRAS-LCS6 polymorphism in advanced NSCLC patients treated with erlotinib or docetaxel in second line treatment (TAILOR)

Monica Ganzinelli¹, Eliana Rulli², Elisa Caiola², Marina Chiara Garassino¹, Massimo Broggin², Elena Copreni², Sheila Piva³, Flavia Longo⁴, Roberto Labianca⁵, Claudia Bareggi⁶, Maria Agnese Fabbri⁷, Olga Martelli⁸, Daniele Fagnani⁹, Maria Cristina Locatelli¹⁰, Alessandro Bertolini¹¹, Giuseppe Valmadre¹², Ida Pavese¹³, Anna Calcagno¹⁴, Maria Giuseppa Sarobba¹⁵ and Mirko Marabese^{2*}

¹Oncology Department, Fondazione IRCCS Istituto Nazionale dei Tumori, Milan, Italy;

²Oncology Department, IRCCS - Istituto di Ricerche Farmacologiche Mario Negri, Italy;

³Oncology Department, Ospedale Fatebenefratelli e Oftalmico, Milan, Italy;

⁴Medical Oncology Department, Policlinico Umberto I Rome, Italy;

⁵Oncology Department, Papa Giovanni XXIII Hospital, Bergamo, Italy;

⁶Medical Oncology, Fondazione IRCCS Ca' Granda - Ospedale Maggiore Policlinico, Milano, Italy

⁷Medical Oncology Department, Ospedale Belcolle, Viterbo, Italy.

⁸Medical Oncology Department, San Giovanni e Addolorata Hospital, Rome, Italy

⁹Oncology Department, Azienda Ospedaliera Desio e Vimercate, Vimercate, Italy

¹⁰San Carlo Borromeo Hospital, Milano, Italy

¹¹Valtellina e Valchiavenna Hospital, Sondrio, Italy

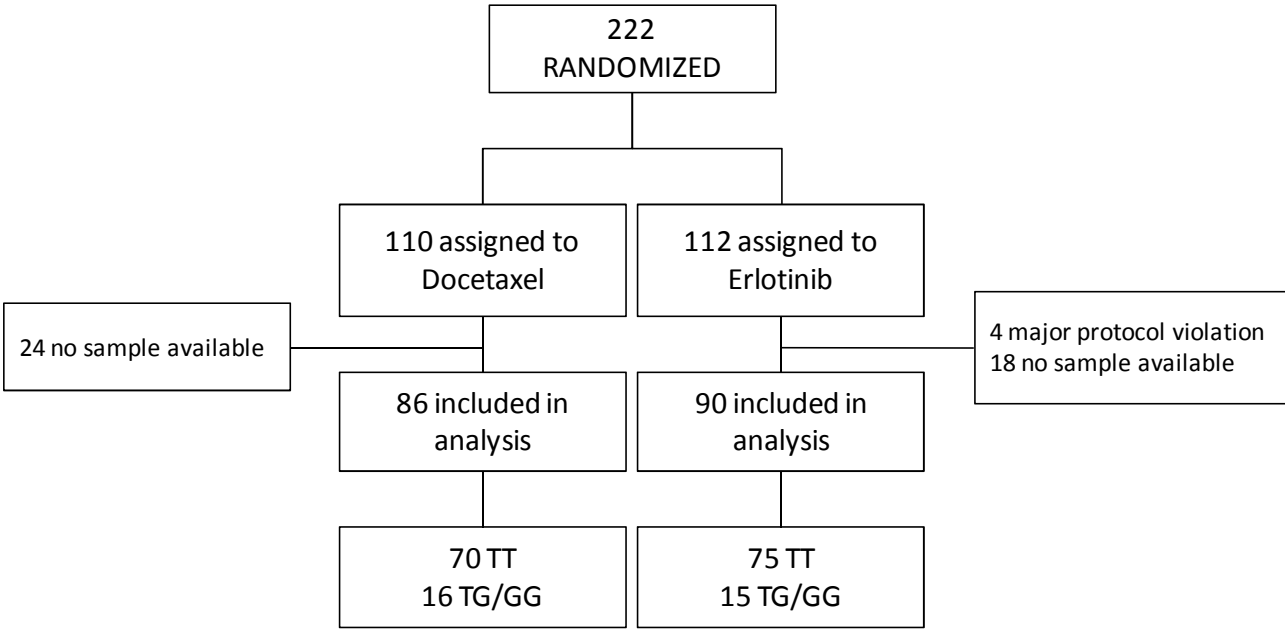
¹²Valtellina e Valchiavenna Hospital, Sondalo, Italy

¹³San Pietro Hospital, Roma, Italy

¹⁴Legnano Hospital, Legnano, Italy

¹⁵Azienda Ospedaliera Universitaria, Sassari, Italy

Supplementary Figure S1: CONSORT



Supplementary Figure S2: Kaplan-Meier curves reporting OS (upper panels) and PFS (lower panels) in docetaxel (panels A and B) and erlotinib (panels C and D) arm according to genotypes.

