

Supplemental Data:

Figure S1: Organ analysis of *Eμ-Myc* transgenic mice of different genotypes after tumor onset and evaluation of the functionality of the Myc/p19^{Arf}/p53 axis

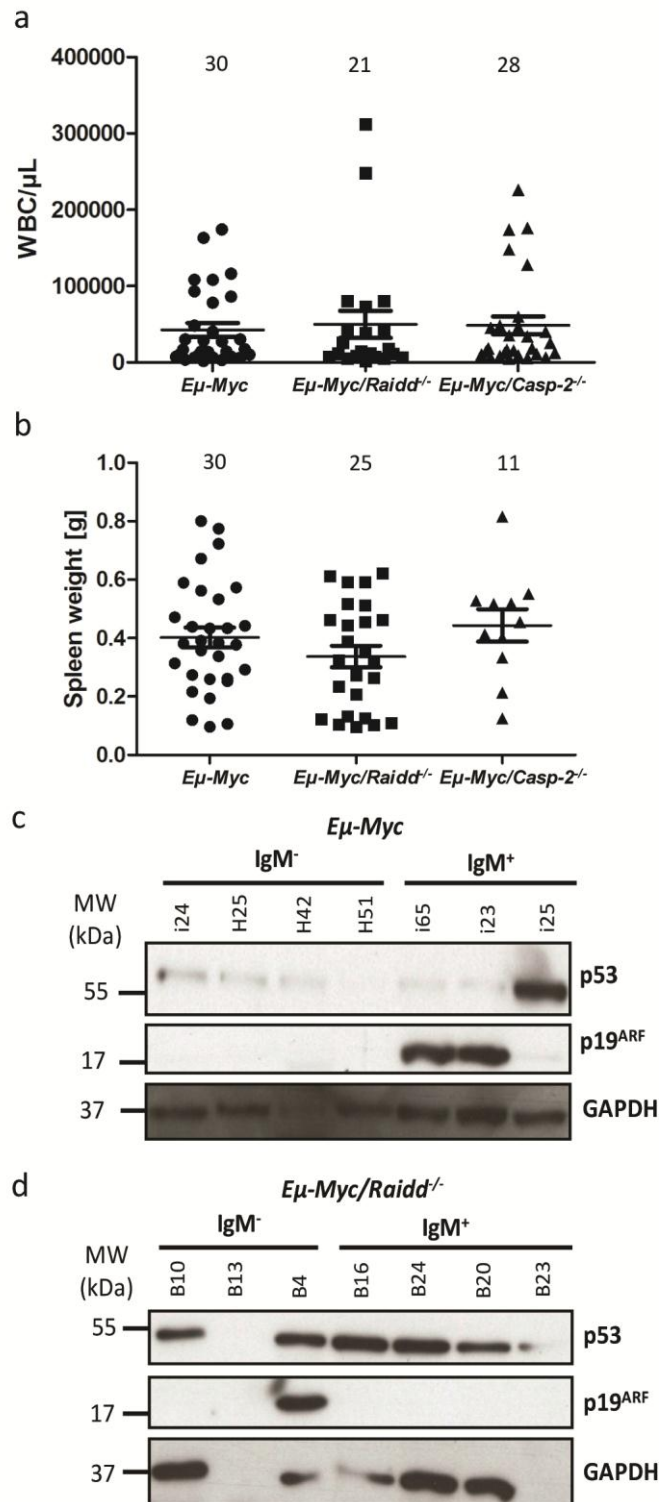
Figure S2: Changes in transcription of p53 target genes upon loss of Caspase-2 or *Raid1* in c-Myc transgenic premalignant pre-B cells.

Figure S1:

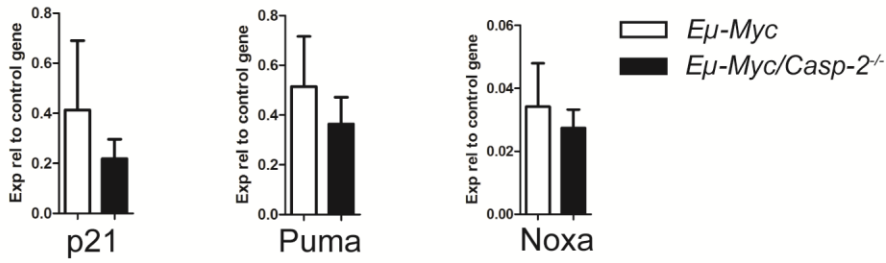
(a) White blood cell count (WBC) in peripheral blood of diseased *Eμ-Myc* mice. Peripheral blood was stained with Turks solution (1:200) and counted in a hemocytometer. Data are given as WBC/ μ l. (b) Spleen weight in grams of mice with palpable *Eμ-Myc* tumors of the indicated genotypes. Numbers of animals analyzed are indicated. (c and d) Representative Western blot analysis of the tumor suppressor gene p53 and its target p19ARF in IgM⁺ and IgM⁻ tumor lysates derived from *Eμ-Myc* (c) and *Eμ-Myc/Raid1*^{-/-} (d) mice. Reprobing with GAPDH was used as a control for loading. The alpha-numerical designations (e.g. H25) refer to the mouse ID number in our cohorts.

Figure S2:

(a) Relative mRNA levels of p21, Puma and Noxa in premalignant bone marrow-derived B220⁺CD43⁺IgM⁻ pre-B cells (n=3). (b) Vulcano blots of an Affymetrix Chip assay performed using mRNA from spleen-derived B220⁺IgM⁺IgD⁻ B cells isolated from indicated genotypes (n=3). Hits with adjusted p_{BH} – value <0.05 were considered as significantly changed. Adjustment was performed using Benjamini Hochberg method. Confirmative qRT-PCR analysis of hits identified in (b) using mRNA from B cells from *Eμ-Myc* and *Eμ-Myc/Casp-2*^{-/-} (c) or *Eμ-Myc/Raid1*^{-/-} (d) mice.

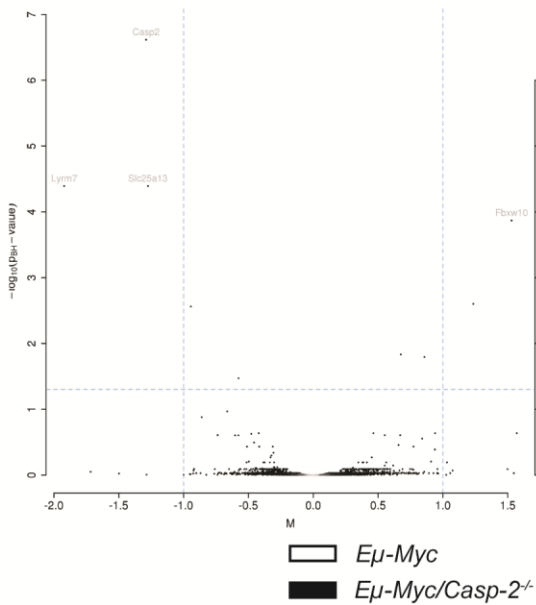


a



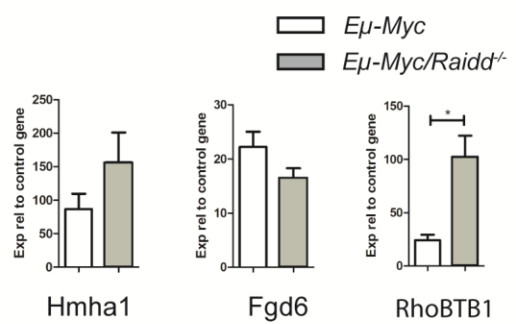
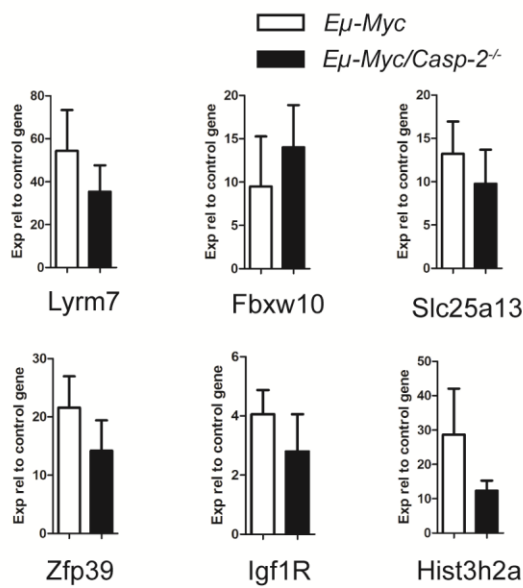
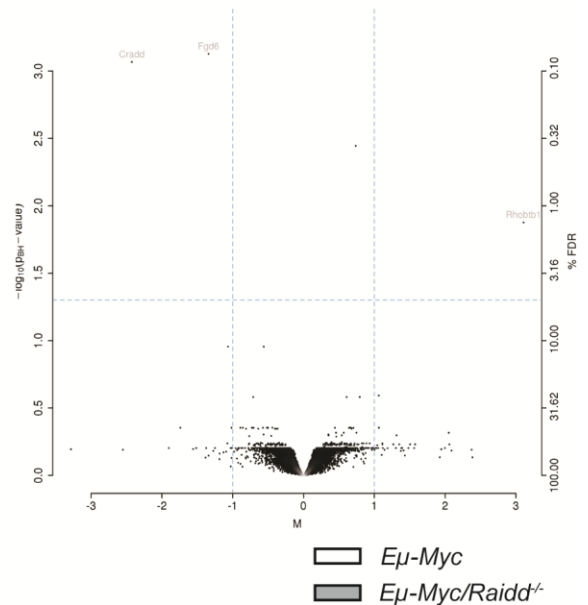
b

Eμ-Myc vs *Eμ-Myc/Casp-2^{-/-}*



c

Eμ-Myc vs *Eμ-Myc/Raidd^{-/-}*



List of used Primers

Actin	fwd	5'- ACT GGG ACG ACA TGG AGAAG -3'	rev	5'- GGG GTG TTG AAG GTC TCA AA -3'
L32	fwd	5'- ATC CTG ATG CCC AAC ATC GG - 3'	rev	5'- CCA GCT GTG CTG CTC TTT CT - 3'
Fbxw10	fwd	5'- AAA GAC TCT CAC TGG GCA CG - 3'	rev	5'- AGC ACC TCC AGA GAC GAG AT - 3'
Fgd6	fwd	5'- TGT AAC CCG GAA GTG TCA GC - 3'	rev	5'- GCC TTT TTA AGC ACC CCT GC - 3'
Hist3h2a	fwd	5'- CGT GCT ACT GCC CAA GAA GA - 3'	rev	5'- AAA AGT CGC ACT AAC GAC CG - 3'
Hmha1	fwd	5'- CAG GAG TTG CAG GAC TGA GA - 3'	rev	5'- CTC GCT TCT TCC GAG AGA ACA - 3'
Igf1R	fwd	5'- GTG TGT GTC CTG GAT TTG GGA - 3'	rev	5'- GGC AGA AAT GCG GAG TGG AA - 3'
Lym7	fwd	5'- CAC GTT GCA AAT GAG CGA CA - 3'	rev	5'- AAG GGA AAG AGA GGA GCG TC - 3'
NOXA	fwd	5'- CCC ACT CCT GGG AAA GTA CA - 3'	rev	5'- AAT CCC TTC AGC CCT TGA TT - 3'
p21	fwd	5'- TTG CAC TCT GGT GTC TGA GC - 3'	rev	5'- TCT GCG CTT GGA GTG ATA GA - 3'
Puma	fwd	5'- CAA GAA GAG CAG CAT CGA CA - 3'	rev	5'- TAG TTG GGC TCC ATT TCT GG - 3'
RhoBTB1	fwd	5'- AAA GCC AAT GTC CTC CCT CG - 3'	rev	5'- ACG TTG GGT CGT TCG TAG TC - 3'
Slc25a13	fwd	5'- AGC CCA GAA GTT TGG TCA GG - 3'	rev	5'- CTC GGC CAA GTT GAA GGG TA - 3'
Zfp39	fwd	5'- CTG GGT ACG GGC AGA AAC TT - 3'	rev	5'- CGA CTC CTG CAT GTA CCC TC - 3'