

SUPPLEMENTARY MATERIAL

CILAIR-BASED SECRETOME ANALYSIS OF OBESE VISCERAL AND SUBCUTANEOUS ADIPOSE TISSUES REVEALS DISTINCTIVE ECM REMODELING AND INFLAMMATION MEDIATORS.

Arturo Roca-Rivada, Susana Belen Bravo, Diego Perez-Sotelo, Jana Alonso, Ana Isabel Castro, Ivan Baamonde, Javier Baltar, Felipe F Casanueva, Maria Pardo.

SUPPLEMENTARY TABLE 1

	PROTEIN ID	PROTEIN NAME	Secretome P	Sequence coverage % Cov (95)
VAT	P31946 1433B_HUMAN	14-3-3 protein beta/alpha	0,352	15,5
	P63261 ACTG_HUMAN	Actin, cytoplasmic 2	0,505	21,1
	Q15848 ADIPO_HUMAN	Adiponectin	SP	6,1
	P01023 A2MG_HUMAN	Alpha-2-macroglobulin	SP	4,2
	P05067 A4_HUMAN	Amyloid beta A4 protein	SP	1,3
	P07355 ANXA2_HUMAN	Annexin A2	0,746	8,9
	P02647 APOA1_HUMAN	Apolipoprotein A-I	SP	19,1
	P02649 APOE_HUMAN	Apolipoprotein E	SP	1
	P20160 CAP7_HUMAN	Azurocidin	SP	5,2
	Q8NE79 POPD1_HUMAN	Blood vessel epicardial substance O	0,565	1
	P27797 CALR_HUMAN	Calreticulin	SP	11,3
	O94985 CSTN1_HUMAN	Calsyntenin-1	SP	2,4
	P00915 CAH1_HUMAN	Carbonic anhydrase 1	0,62	18,0
	P16870 CBPE_HUMAN	Carboxypeptidase E	SP	1,0
	Q9UBR2 CATZ_HUMAN	Cathepsin Z	SP	3,3
	Q03135 CAV1_HUMAN	Caveolin-1	0,5	11,8
	Q6YHK3 CD109_HUMAN	CD109 antigen	SP	1,3
	P16070 CD44_HUMAN	CD44 antigen	SP	1,6
	P43121 MUC18_HUMAN	Cell surface glycoprotein MUC18	SP	4,5
	Q9P2E5 CHPF2_HUMAN	Chondroitin sulfate glucuronyltransferase	SP	1,0
	P10909 CLUS_HUMAN	Clusterin	SP	2,7
	P02452 CO1A1_HUMAN	Collagen alpha-1(I) chain	SP	24,9
	P02461 CO3A1_HUMAN	Collagen alpha-1(III) chain	SP	16,3
	P02462 CO4A1_HUMAN	Collagen alpha-1(IV) chain	SP	8,6
	P20908 CO5A1_HUMAN	Collagen alpha-1(V) chain	SP	2,2
	Q05707 COEA1_HUMAN	Collagen alpha-1(XIV) chain	SP	4,7
	P05997 CO5A2_HUMAN	Collagen alpha-2(V) chain	SP	1,0
	P0C0L5 CO4B_HUMAN	Complement C4-B	SP	1,0
	P10643 CO7_HUMAN	Complement component C7	SP	1,0
	P00746 CFAD_HUMAN	Complement factor D (Adipsin)	SP	5,1
	P08603 CFAH_HUMAN	Complement factor H	SP	1,5
	P07585 PGS2_HUMAN	Decorin	0,506	10,3
	Q07507 DERM_HUMAN	Dermatopontin	SP	4,0
	P53634 CATC_HUMAN	Dipeptidyl peptidase 1	SP	2,4
	O43184 ADA12_HUMAN	Disintegrin and metalloproteinase domain-containing protein 12	SP	1,3
	Q13822 ENPP2_HUMAN	Ectonucleotide pyrophosphatase/phosphodiesterase family member 2	SP	1,6
	Q9Y6C2 EMIL1_HUMAN	EMILIN-1	SP	2,3
	Q9NZ08 ERAP1_HUMAN	Endoplasmic reticulum aminopeptidase 1	SP	2,8
	Q9HCU0 CD248_HUMAN	Endosialin	SP	7,9

P07099 HYEP_HUMAN	Epoxide hydrolase 1	SP	4,0
P08294 SODE_HUMAN	Extracellular superoxide dismutase [Cu-Zn]	SP	6,7
P15090 FABP4_HUMAN	Fatty acid-binding protein, adipocyte	0,747	39,4
P35555 FBN1_HUMAN	Fibrillin-1	SP	0,7
P02675 FIBB_HUMAN	Fibrinogen beta chain	SP	30,6
P02679 FIBG_HUMAN	Fibrinogen gamma chain	SP	15,7
Q06828 FMOD_HUMAN	Fibromodulin	SP	4,5
P98095 FBLN2_HUMAN	Fibulin-2	SP	0,8
Q9UBX5 FBLN5_HUMAN	Fibulin-5	SP	5,6
Q12841 FSTL1_HUMAN	Follistatin-related protein 1	SP	3,2
P04792 HB1_HUMAN	Heat shock protein beta-1	0,74	4,4
P02790 HEMO_HUMAN	Hemopexin	SP	2,4
Q96QV6 H2A1A_HUMAN	Histone H2A type 1-A	0,516	6,9
Q9BTM1 H2AJ_HUMAN	Histone H2A.J	0,559	12,4
Q16695 H31T_HUMAN	Histone H3.1t	0,696	8,1
Q29836 1B67_HUMAN	HLA class I histocompatibility antigen, B-67 alpha chain	SP	3,6
P01876 IGHA1_HUMAN	Ig alpha-1 chain C region	0,732	7,1
P01857 IGHG1_HUMAN	Ig gamma-1 chain C region	0,581	11,8
P01859 IGHG2_HUMAN	Ig gamma-2 chain C region	0,638	11,4
P01767 HV306_HUMAN	Ig heavy chain V-III region BUT	0,705	9,6
P01772 HV311_HUMAN	Ig heavy chain V-III region KOL	0,909	12,7
P01834 IGKC_HUMAN	Ig kappa chain C region	0,659	48,1
P01703 LV105_HUMAN	Ig lambda chain V-I region NEWM	0,839	16,5
P0CG06 LAC3_HUMAN	Ig lambda-3 chain C regions	0,783	28,3
P01871 IGHM_HUMAN	Ig mu chain C region	0,566	5,8
P04220 MUCB_HUMAN	Ig mu heavy chain disease protein	0,509	4,9
O14498 ISLR_HUMAN	Immunoglobulin superfamily containing leucine-rich repeat protein	SP	1,9
P22692 IBP4_HUMAN	Insulin-like growth factor-binding protein 4	SP	7,8
Q16270 IBP7_HUMAN	Insulin-like growth factor-binding protein 7	SP	7,8
P05231 IL6_HUMAN	Interleukin-6	SP	8,0
P10145 IL8_HUMAN	Interleukin-8	SP	16,2
O75874 IDHC_HUMAN	Isocitrate dehydrogenase [NADP] cytoplasmic	0,547	1,0
Q76M96-2 CCD80_HUMAN	Isoform 2 of Coiled-coil domain-containing protein 80	SP	4,2
P23142-4 FBLN1_HUMAN	Isoform C of Fibulin-1	SP	2,9
P02751-9 FINC_HUMAN	Isoform Fibronectin not containing EIIIA and EIIIB and uses V64 variant of IIIICS region of Fibronectin	SP	9,0
P13611-5 CG2_HUMAN	Isoform Vint of Versican core protein	SP	3,4
P02788 TRFL_HUMAN	Lactotransferrin	SP	1,7
O15230 LAMA5_HUMAN	Laminin subunit alpha-5	SP	0,4
P07942 LAMB1_HUMAN	Laminin subunit beta-1	SP	1,1
P55268 LAMB2_HUMAN	Laminin subunit beta-2	SP	1,1

Q99538 LGMN_HUMAN	Legumain	SP	3,9
P41159 LEP_HUMAN	Leptin	SP	10,8
P15018 LIF_HUMAN	Leukemia inhibitory factor	SP	8,4
P30740 ILEU_HUMAN	Leukocyte elastase inhibitor	0,516	3,7
P18428 LBP_HUMAN	Lipopolysaccharide-binding protein	SP	2,3
P23141 EST1_HUMAN	Liver carboxylesterase 1	SP	27,0
P00338 LDHA_HUMAN	L-lactate dehydrogenase A chain	0,549	9,3
P07195 LDHB_HUMAN	L-lactate dehydrogenase B chain	0,569	6,3
P51884 LUM_HUMAN	Lumican	SP	44,1
P09603 CSF1_HUMAN	Macrophage colony-stimulating factor 1	SP	3,2
Q5VSK2 MRC1L_HUMAN	Macrophage mannose receptor 1-like protein 1	SP	0,8
P33908 MA1A1_HUMAN	Mannosyl-oligosaccharide 1,2-alpha-mannosidase IA	SP	2,1
P14780 MMP9_HUMAN	Matrix metalloproteinase-9	SP	2,1
Q16853 AOC3_HUMAN	Membrane primary amine oxidase	SP	5,9
P55083 MFAP4_HUMAN	Microfibril-associated glycoprotein 4	SP	1,0
P05164 PERM_HUMAN	Myeloperoxidase	SP	2,4
P80188 NGAL_HUMAN	Neutrophil gelatinase-associated lipocalin	SP	7,6
P14543 NID1_HUMAN	Nidogen-1	SP	6,7
P26022 PTX3_HUMAN	Pentraxin-related protein PTX3	SP	1,5
P19021 AMD_HUMAN	Peptidyl-glycine alpha-amidating monooxygenase	SP	1,5
Q06830 PRDX1_HUMAN	Peroxiredoxin-1	0,528	5,0
P32119 PRDX2_HUMAN	Peroxiredoxin-2	0,522	9,1
P30086 PEBP1_HUMAN	Phosphatidylethanolamine-binding protein 1	0,672	17,7
P55058 PLTP_HUMAN	Phospholipid transfer protein	SP	3,0
P05155 IC1_HUMAN	Plasma protease C1 inhibitor	SP	5,4
P05120 PAI2_HUMAN	Plasminogen activator inhibitor 2	0,536	13,4
P13796 PLSL_HUMAN	Plastin-2	0,502	2,6
P07602 SAP_HUMAN	Proactivator polypeptide	SP	2,5
Q96SM3 CPXM1_HUMAN	Probable carboxypeptidase X1	SP	2,0
Q15084 PDIA6_HUMAN	Protein disulfide-isomerase A6	SP	3,9
Q6DN03 H2B2C_HUMAN	Putative histone H2B type 2-C	0,575	5,2
P49788 TIG1_HUMAN	Retinoic acid receptor responder protein 1	SP	6,1
P02753 RET4_HUMAN	Retinol-binding protein 4	SP	5,0
P07998 RNAS1_HUMAN	Ribonuclease pancreatic	SP	4,5
O75326 SEM7A_HUMAN	Semaphorin-7A	SP	2,3
P02787 TRFE_HUMAN	Serotransferrin	SP	6,4
P02768 ALBU_HUMAN	Serum albumin	SP	50,6
P02743 SAMP_HUMAN	Serum amyloid P-component	SP	4,5
O75368 SH3L1_HUMAN	SH3 domain-binding glutamic acid-rich-like protein	0,758	8,8
A6NMB1 SIG16_HUMAN	Sialic acid-binding Ig-like lectin 16	SP	1,0
Q13621 S12A1_HUMAN	Solute carrier family 12 member 1	0,565	1,0

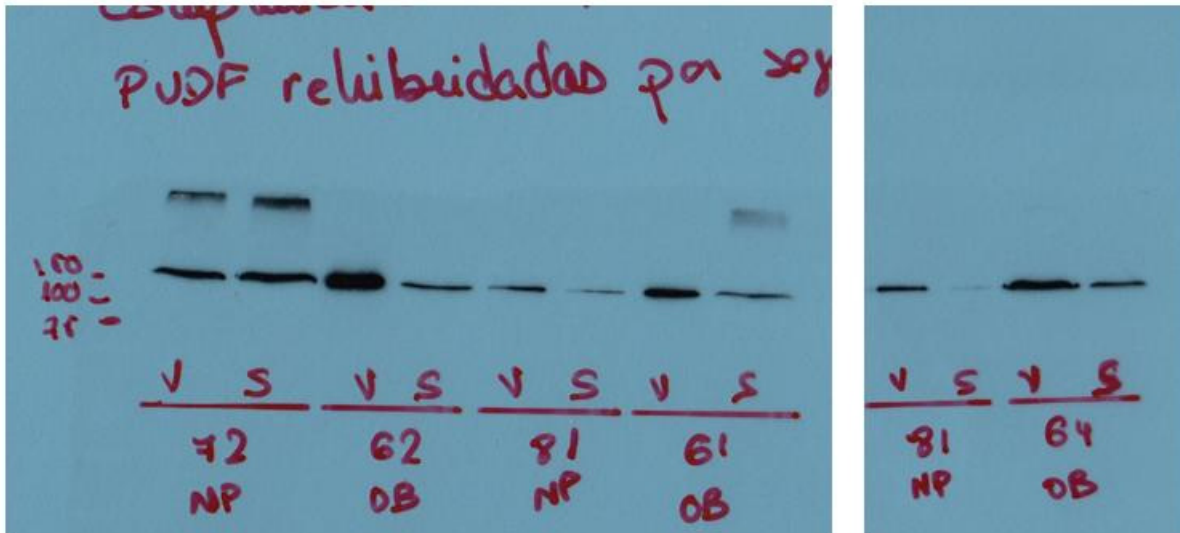
Q9BUD6 ON2_HUMAN	Spondin-2	SP	3,6
P09238 MMP10_HUMAN	Stromelysin-2	SP	2,5
P04179 SODM_HUMAN	Superoxide dismutase [Mn], mitochondrial	0,535	6,3
P22105 TENX_HUMAN	Tenascin-X	SP	1,0
Q9UKZ4 TEN1_HUMAN	Teneurin-1	0,591	1,0
Q8NBS9 TXND5_HUMAN	Thioredoxin domain-containing protein 5	SP	4,2
P10646 TFPI1_HUMAN	Tissue factor pathway inhibitor	SP	2,6
P48307 TFPI2_HUMAN	Tissue factor pathway inhibitor 2	SP	14,9
P60174 TPIS_HUMAN	Triosephosphate isomerase	0,51	22,5
Q15661 TRYB1_HUMAN	Tryptase beta-1	SP	1,0
P62988 UBIQ_HUMAN	Ubiquitin		17,1
Q969H8 CS010_HUMAN	UPF0556 protein C19orf10	SP	5,2
P00749 UROK_HUMAN	Urokinase-type plasminogen activator	SP	2,1
P08670 VIME_HUMAN	Vimentin	0,512	13,3
P07225 PROS_HUMAN	Vitamin K-dependent protein S	SP	1,2
P04004 VTNC_HUMAN	Vitronectin	SP	3,1

	PROTEIN ID	PROTEIN NAME	Secretome P	Sequence coverage
SAT	P02749 APOH_HUMAN	Beta-2-glycoprotein 1	SP	5,8
	P20908 CO5A1_HUMAN	Collagen alpha-1(V) chain	SP	1,0
	P09871 C1S_HUMAN	Complement C1s subcomponent	SP	6,0
	P08174 DAF_HUMAN	Complement decay-accelerating factor	SP	6,3
	Q16610 ECM1_HUMAN	Extracellular matrix protein 1	SP	11,3
	P02671 FIBA_HUMAN	Fibrinogen alpha chain	SP	13,5
	Q92820 GGH_HUMAN	Gamma-glutamyl hydrolase *	SP	4,4
	P35052 GPC1_HUMAN	Glypican-1	SP	3,4
	P00738 HPT_HUMAN	Haptoglobin	SP	4,2
	P04196 HRG_HUMAN	Histidine-rich glycoprotein	SP	1,7
	P01860 IGHG3_HUMAN	Ig gamma-3 chain C region	0,544	15,1
	P01861 IGHG4_HUMAN	Ig gamma-4 chain C region	0,609	4,3
	P00338-2 LDHA_HUMAN	Isoform 2 of L-lactate dehydrogenase A chain	0,549	6,3
	P56181-2 NDUV3_HUMAN	Isoform 2 of NADH dehydrogenase [ubiquinone] flavoprotein 3, mitochondrial	0,815	1,0
	P60174-2 TPIS_HUMAN	Isoform 2 of Triosephosphate isomerase	0,51	11,2
	Q15063-4 POSTN_HUMAN	Isoform 4 of Periostin	SP	13,1
	P05164-3 PERM_HUMAN	Isoform A of Myeloperoxidase	SP	4,1
	Q13822-2 ENPP2_HUMAN	Isoform Alpha of Ectonucleotide pyrophosphatase/phosphodiesterase family member 2	SP	9,9
	P02751-7 FINC_HUMAN	Isoform Fibronectin containing extra ED-B domain of Fibronectin	SP	10,5
	O14786 NRP1_HUMAN	Neuropilin-1	SP	1,7
	P59666 DEF3_HUMAN	Neutrophil defensin 3	SP	19,2

P02760	AMBP_HUMAN	Protein AMBP	SP	2,3
Q9NS98	SEM3G_HUMAN	Semaphorin-3G	SP	3,1
Q9BQG1	SYT3_HUMAN	Synaptotagmin-3	0,618	1,9
Q01995	TAGL_HUMAN	Transgelin	0,56	9,5

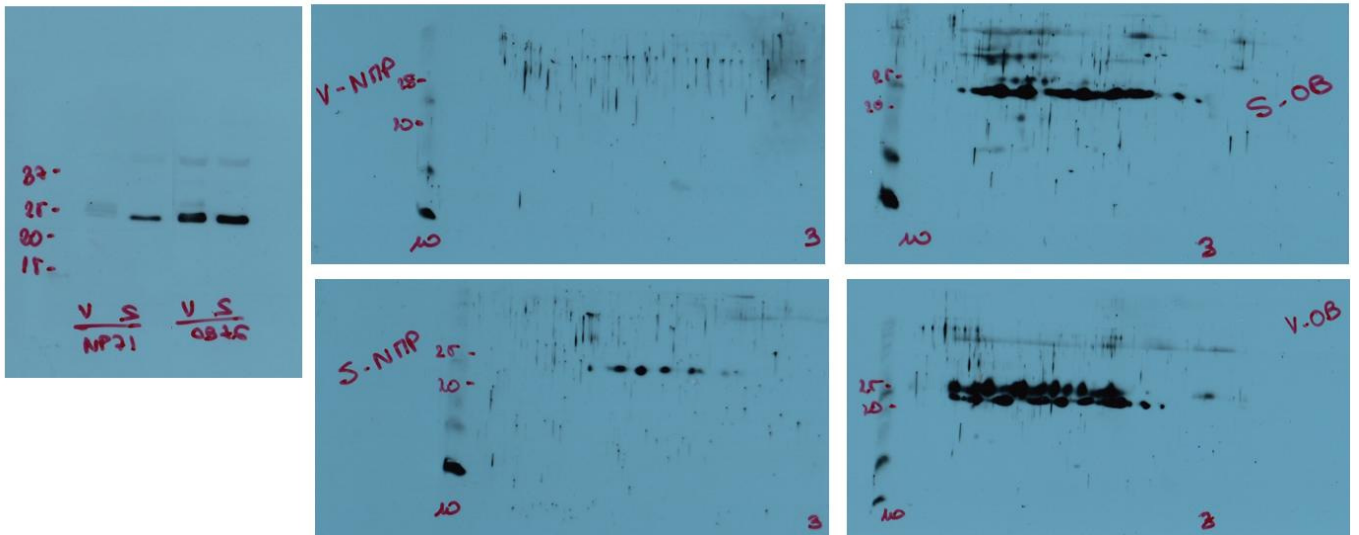
Supplementary material to Figure 4

Complement C3 western blot



Whole membrane images of Complement C3 western blot from Figure 4A are shown.

Supplementary material to Figure 4
TIMP-1 western blot



Whole membrane images of 1-D and 2-D TIMP-1 western blots from Figure 4B are shown.