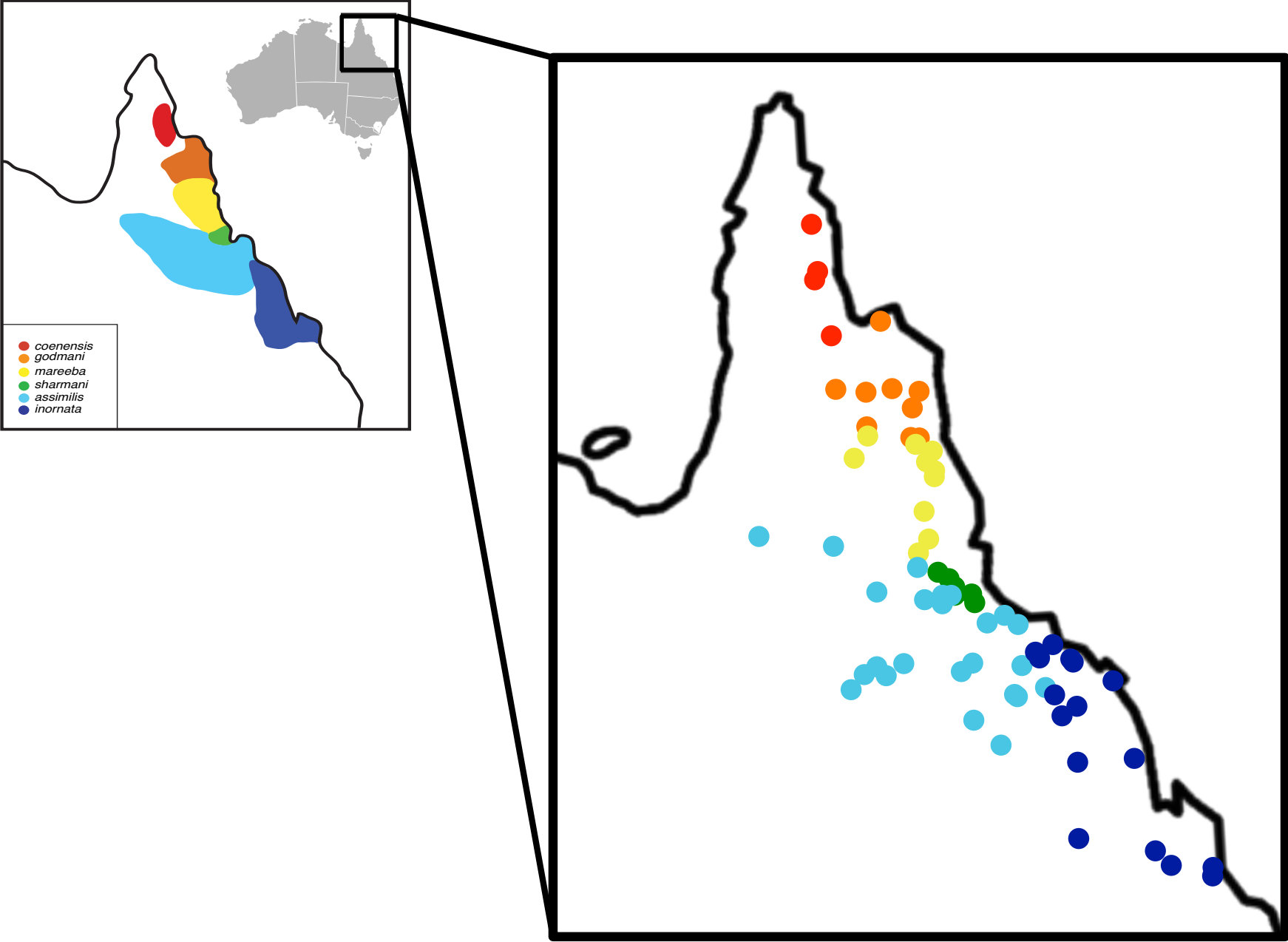
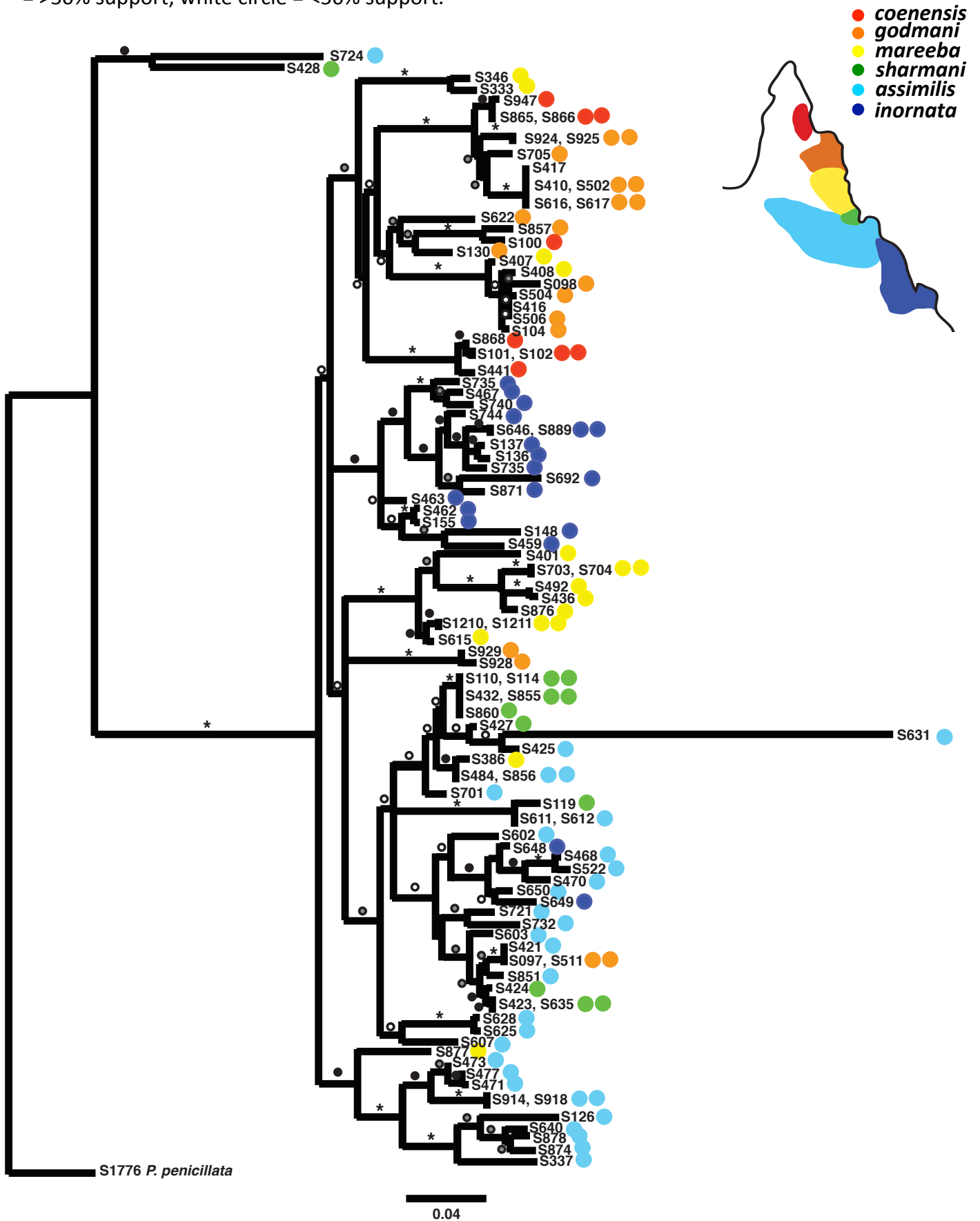


Supplementary Figure 1 Map of the sample localities for the six northeastern Queensland *Petrogale* species.



Supplementary Figure 2 Phylogenetic relationships amongst mitochondrial control region haplotypes of six northeastern Queensland *Petrogale* species based on maximum likelihood analysis. Bootstrap values are denoted on nodes by * = >95% support; black circle = >75% support; grey circle = >50% support; white circle = <50% support.



Supplementary Figure 3a Principal coordinate analysis of microsatellite data showing pairwise comparisons between adjacent northeast Queensland *Petrogale* species (coloured by map distributions). **3b** Genetic clustering of six northeast Queensland *Petrogale* species based on STRUCTURE analysis with clustering based on the number of recognized species (K=6) and then with no prior population information (K=2).

