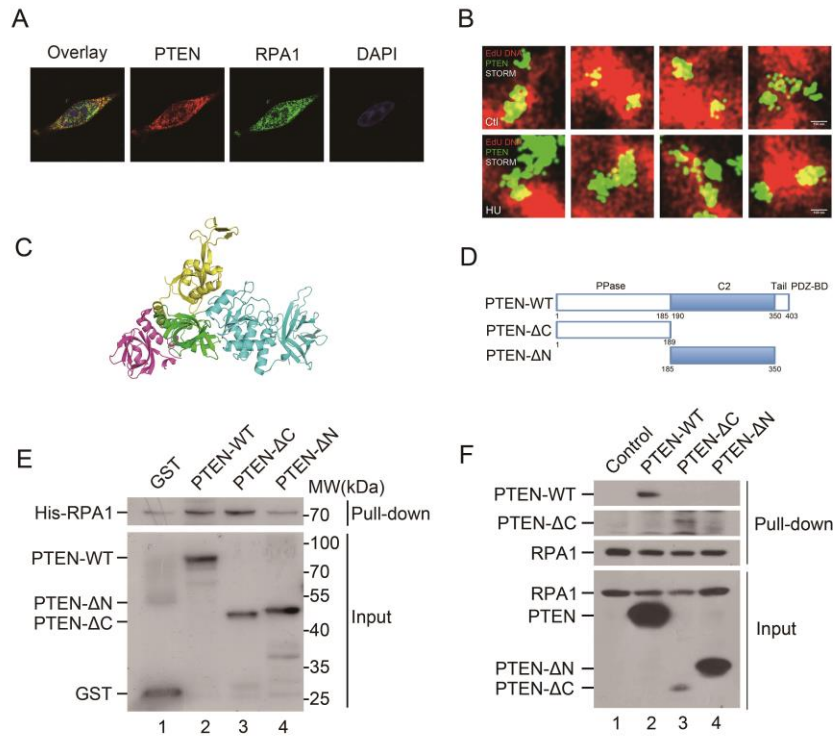


## Supplementary Figure 2



**Supplementary information, Figure S2. PTEN binds to RPA1 mainly through its PTP domain**

**(A)** Immunofluorescence of RPA1 and PTEN. Immunostaining experiments were performed using anti-RPA1 and anti-PTEN antibodies in PTEN<sup>+/+</sup> HCT116 cells. RPA1 co-localized with PTEN. **(B)** Specific views of STORM images of co-localization of DNA replication sites and PTEN with or without HU treatment. **(C)** Structural evidence for association of PTEN with RPA. In Silico docking analysis of PTEN and the RPA<sub>RPA1(439-616)/RPA2(43-171)/RPA3</sub> complex within a distance of 3.0Å. PTEN is represented by cyan and RPA1 by salmon. **(D and E)** *In vitro* binding assay with GST-tagged full-length PTEN, or various GST-tagged PTEN domains (structure as shown) (D) and His-tagged full-length RPA1. PTEN is capable of binding RPA1 with either its phosphatase domain or C2 domain. **(F)** *In vivo* binding assay of S-tagged-RPA1 and Flag-tagged-PTEN truncations.