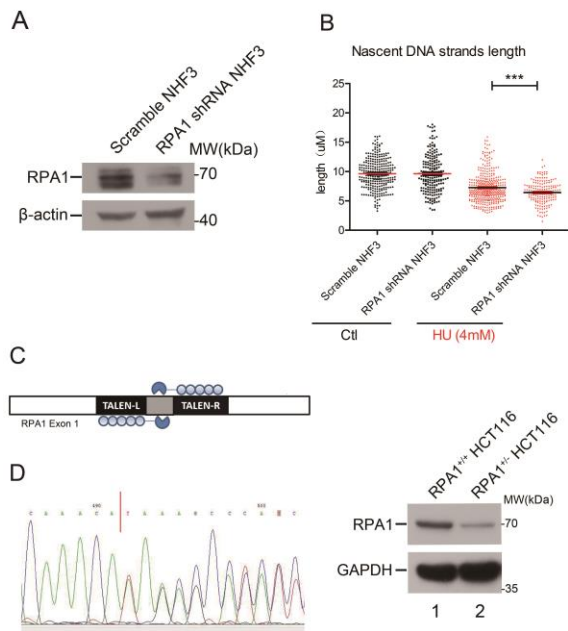


# Supplementary Figure 3



**Supplementary information, Figure S3. RPA1 is required for stalled replication forks protection**

**(A)** Western blot confirmation of RPA1 knock down in NHF3 cells. **(B)** IdU tract lengths in NHF3 cells transfected with RPA1 shRNA lentivirus and Scramble shRNA lentivirus. Data are presented as means  $\pm$  SEM and analyzed by unpaired t-test. \*\*\* $P < 0.001$ . **(C)** Schematic diagram of RPA1 TALEN knockout design. **(D)** DNA sequencing and western blot confirmation of RPA1 knockout.