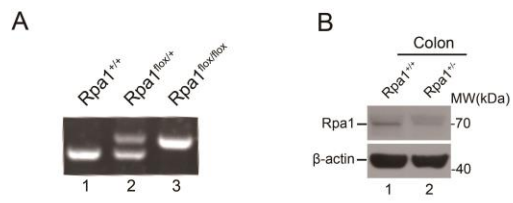


Supplementary Figure 5



Supplementary information, Figure S5. Validation of *Rpa1*^{+/-} mice

(A) Genotype analysis of *Rpa1*^{+/+}, *Rpa1*^{fllox/+} and *Rpa1*^{fllox/fllox} mice. **(B)** Verification of expression of RPA1 in *Rpa1* heterozygous knockout mice. Colon tissues from *Rpa1*^{+/+} and *Rpa1*^{+/-} mice were lysed for immunoblotting with the anti-RPA1 antibody.