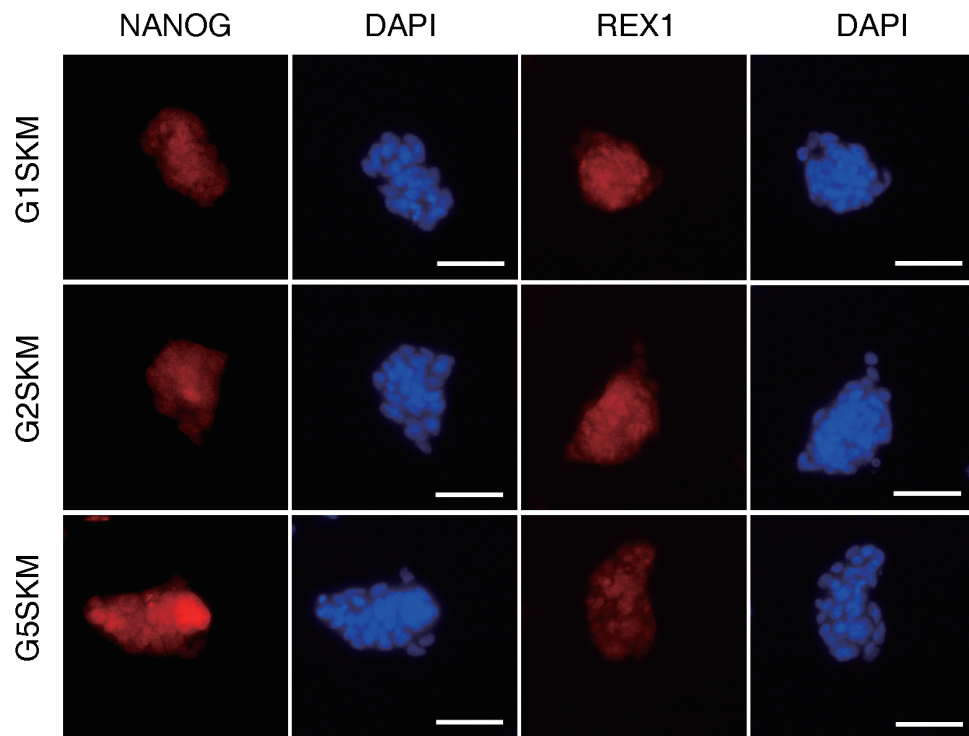
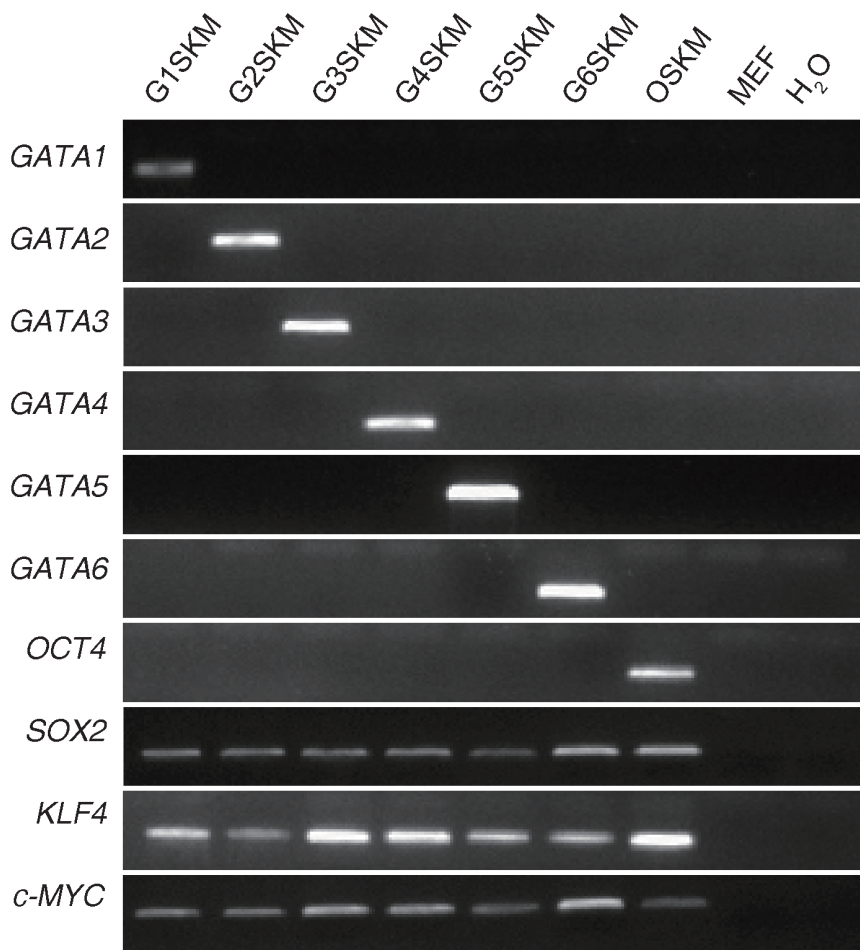


A**B**

Supplementary Information, Figure S1 Characterization of GATA-reprogrammed iPSCs. (A) The expression of NANOG and REX1 in G1SKM-induced iPSCs, G2SKM-induced iPSCs, and G5SKM-induced iPSCs was visualized by immunostaining (red). Nuclei were counterstained using DAPI (blue). Scale bars represent 50 μm. (B) PCR verification of the genomic integration of exogenous genes in GATA family member-reprogrammed iPSCs. MEFs and H₂O were used as controls.