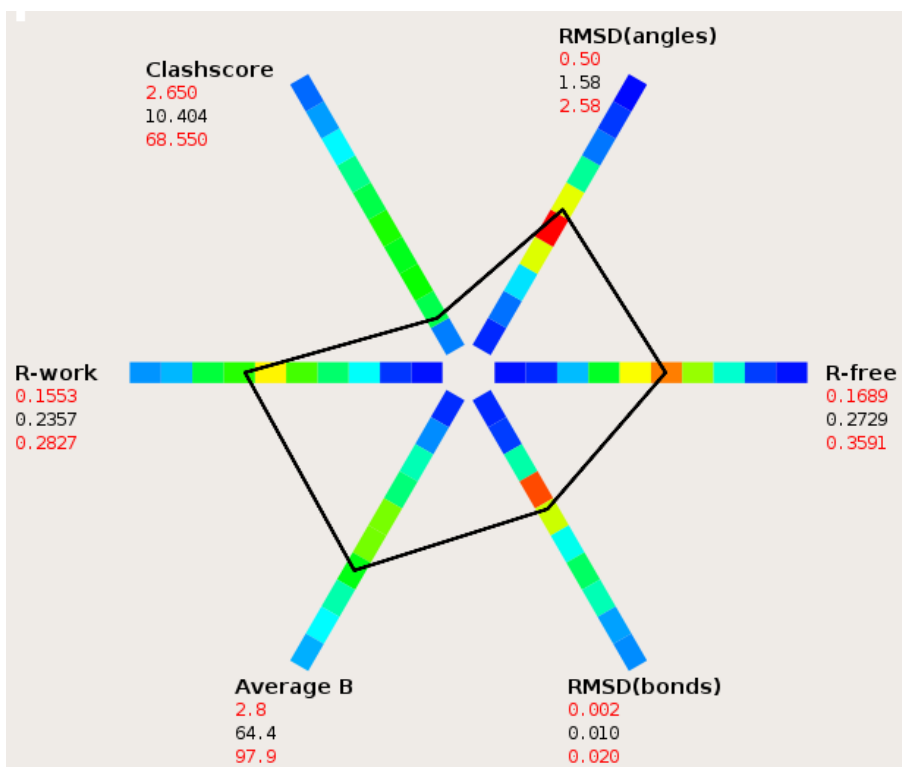


Ramachandran	
outlier	0.00%
favored	95.53%
Rotamer outliers	5.92%
C-beta deviations	1 Å
Clash score	10.40
Molprobity score	2.43
rms bond	0.0096 Å
rms angles	1.58 °



**Supplementary Figure 10. Molprobity statistics (top) and polygon diagram (bottom) of the KD-AID model.** Polygon statistics were calculated based on 780 PDB entries of similar resolution from the PDB data bank.