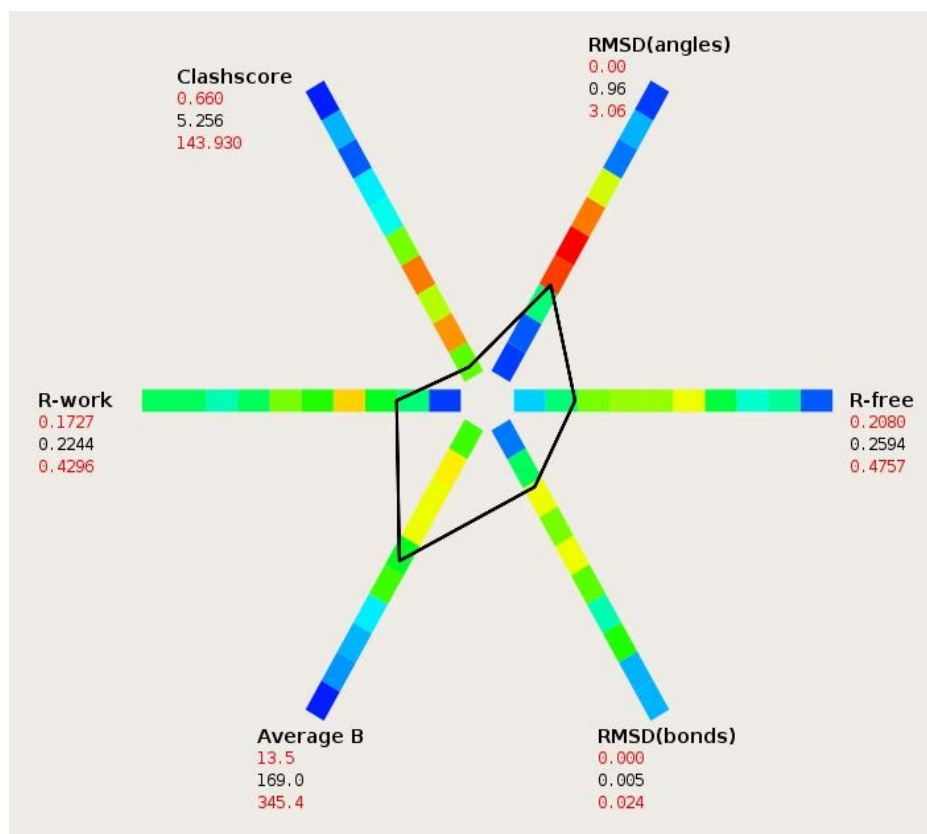


Ramachandran	
outlier	0.11%
favored	95.24%
Rotamer outliers	7.84%
C-beta deviations	0 Å
Clash score	5.26
Molprobity score	2.29
rms bond	0.0068 Å
rms angles	0.99 °



Supplementary Figure 8. Molprobity statistics (top) and polygon diagram (bottom) of the p-AMPK model. Polygon statistics were calculated based on 150 PDB entries of similar resolution from the PDB data bank.