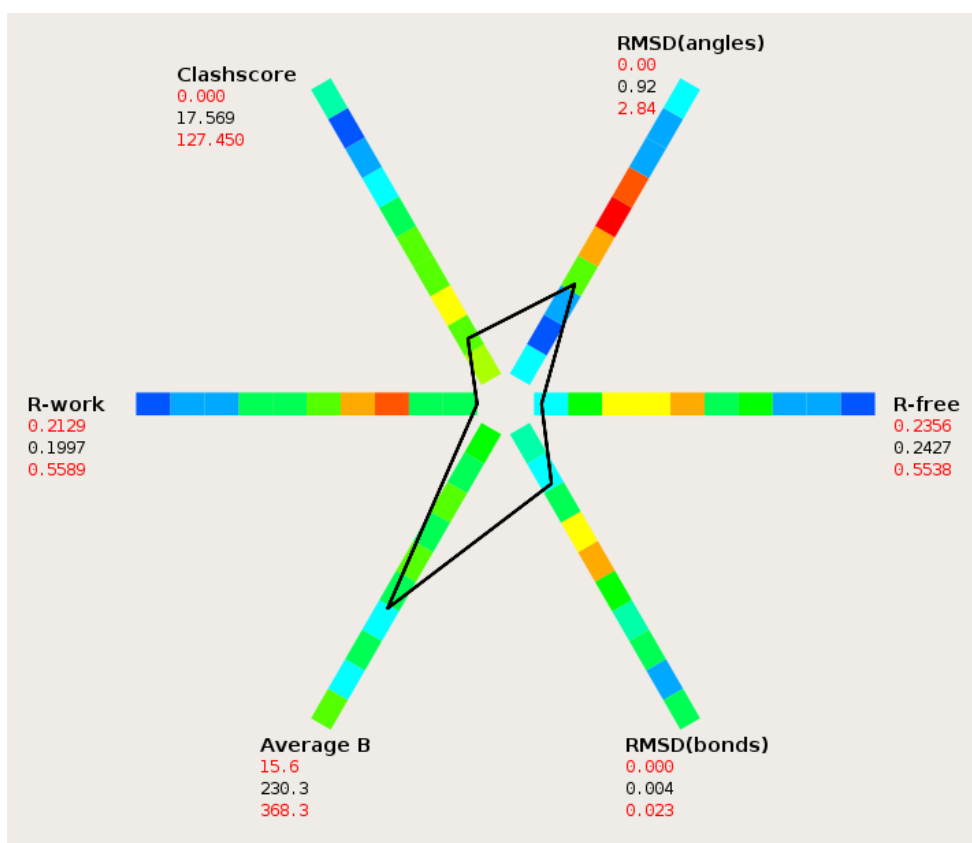


Ramachandran	
outlier	0.13%
favored	93.69%
Rotamer outliers	9.17%
C-beta deviations	0
Clash score	17.57
Molprobity score	2.89
RMS bond	0.0065 Å
RMS angles	0.98 °



Supplementary Figure 9. Molprobity statistics (top) and polygon diagram (bottom) of the model of non-phosphorylated AMPK Polygon statistics were calculated based on 53 PDB entries of similar resolution from the PDB data bank.