

Supplementary information, Figure S7

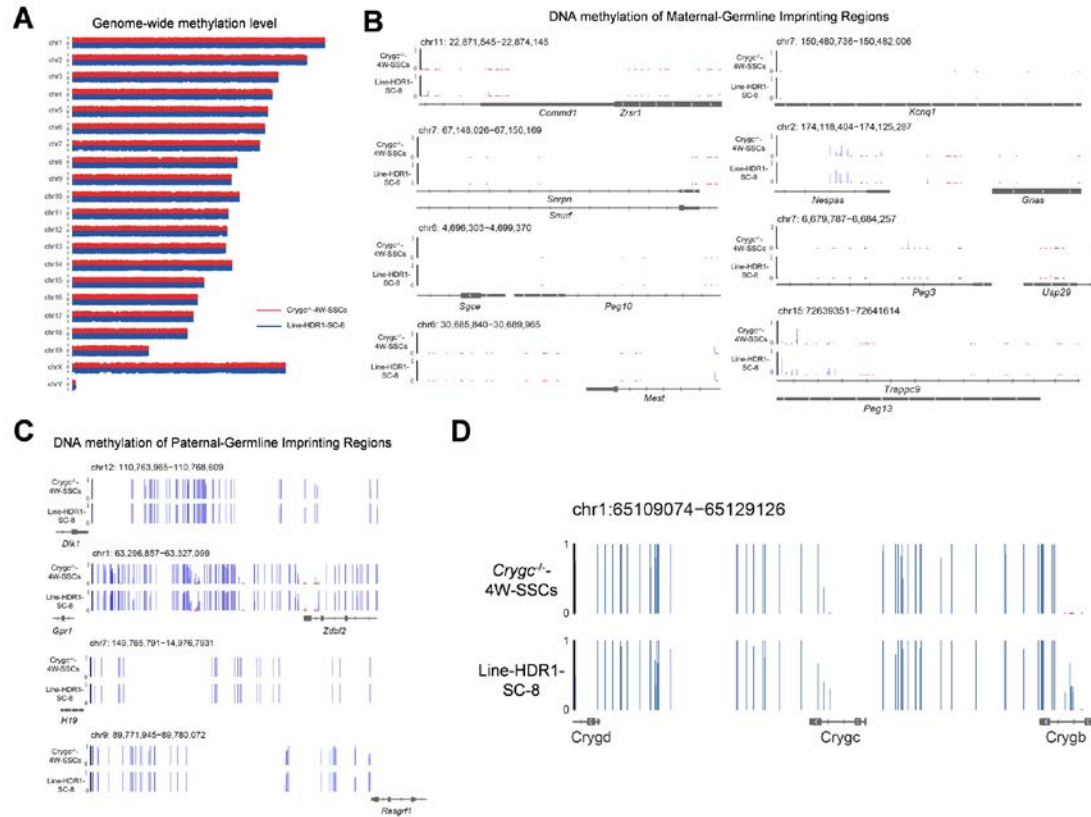


Figure S7 DNA Methylation patterns were not disrupted by CRISPR-Cas9 system. **(A)** Line-HDR1-SC-8 SSCs were consistent with *Crygc*^{-/-}-4W-SSCs on genome-wide DNA methylation levels. **(B, C)** All tested imprinted genes kept the typical paternal imprinting status in both Line-HDR1-SC-8 and its parental *Crygc*^{-/-}-4W-SSCs. **(D)** The DNA methylation level of *Crygc* remains unchanged in both Line-HDR1-SC-8 and its parental *Crygc*^{-/-}-4W-SSCs.