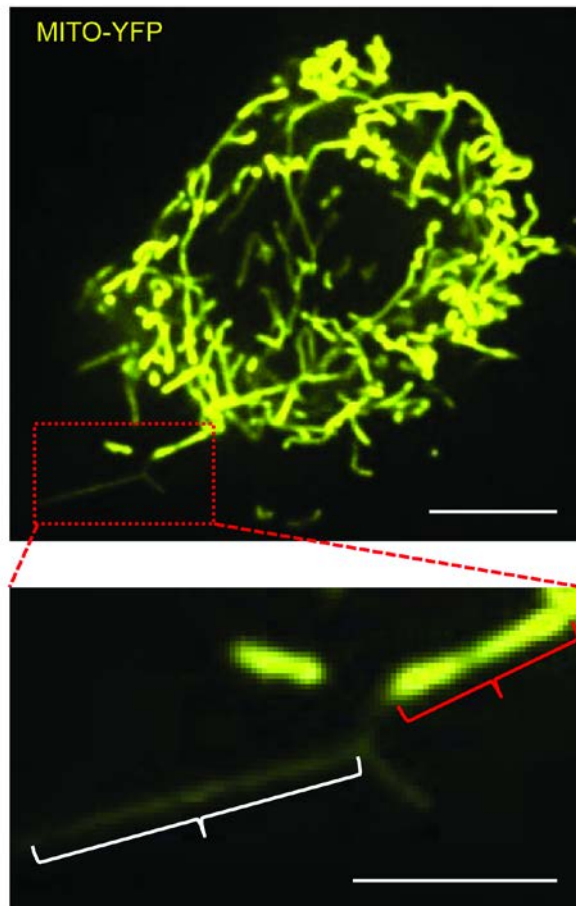


## Supplementary information, Figure S13



**Figure S13** Schematic diagram for measurement of diameter of normal and dynamic mitochondrial tubules in NRK cell fluorescent images. KIF5B-knockout NRK cells that stably express Mito-YFP and TET-ON-KIF5B were treated with 0.5  $\mu\text{g/ml}$  tetracycline for 1 h, and then observed with a spinning-disk microscope system. Scale bar, 10  $\mu\text{m}$ ; scale bar in zoomed panel, 5  $\mu\text{m}$ . Red brace indicates normal mitochondrial tube and white brace indicates dynamic mitochondrial tube.