

Supplementary information, Figure S14

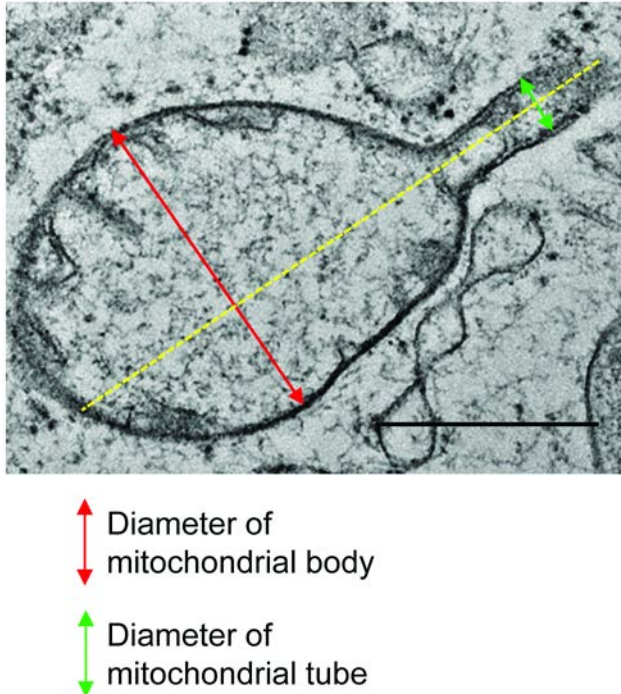


Figure S14 Schematic diagram for measurement of diameter of normal and dynamic mitochondrial tubules in EM images. NRK cells were observed by high-pressure freezing TEM and diameters were measured as shown. Scale bar, 0.5 μm . Diameters of mitochondrial body and tube were measured along the direction of tube (yellow line), and the maximum diameters (red and green arrows) were taken as final diameters of mitochondrial body and tube, respectively.