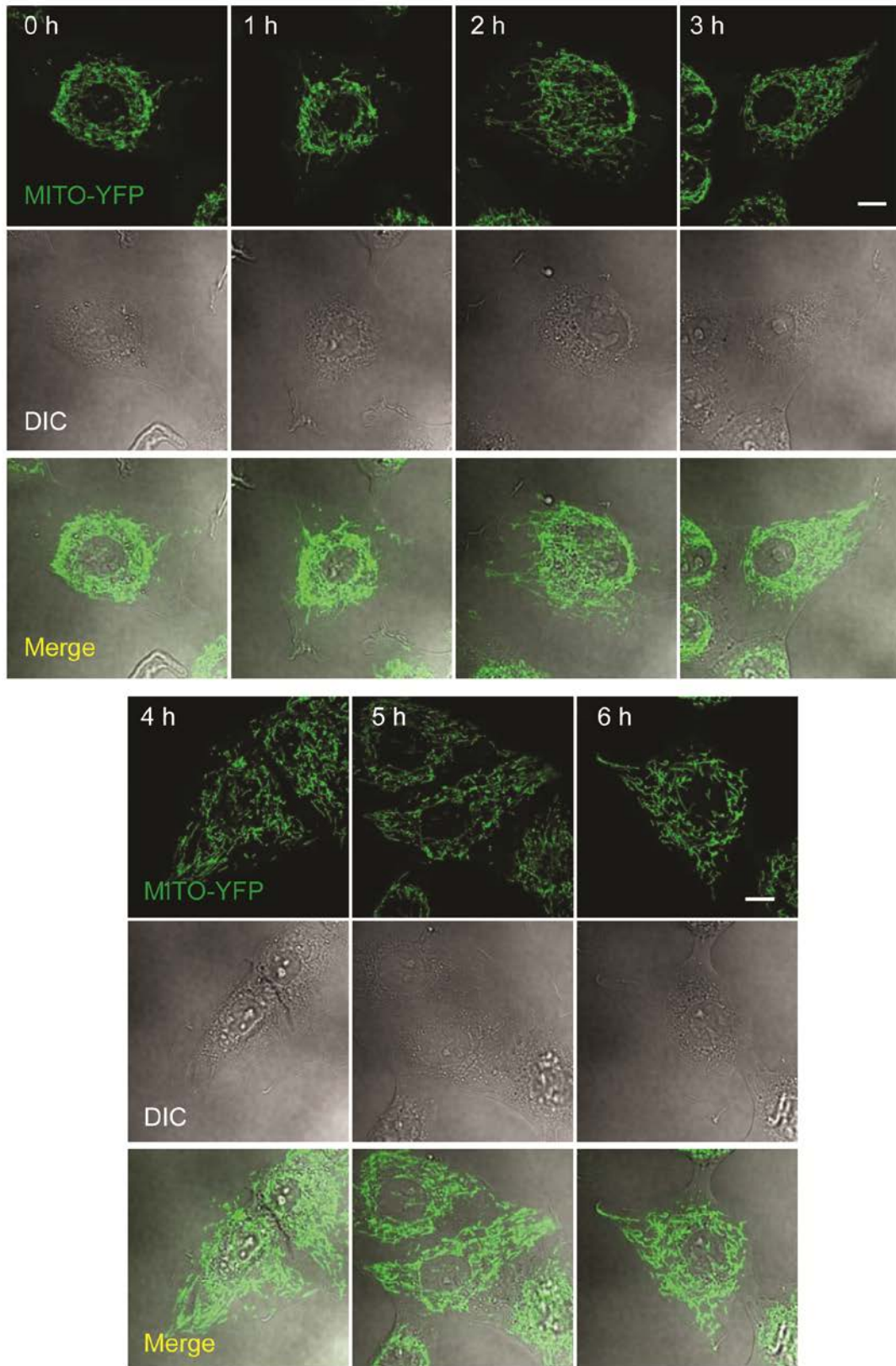


**Supplementary information, Figure S5**



**Figure S5** KIF5B drives peripheral mitochondrial network formation. *KIF5B*<sup>-/-</sup> NRK cells that stably express Mito-YFP and TET-ON-KIF5B were treated with 0.5 µg/ml tetracycline, and observed by confocal microscopy. Scale bar, 10 µm.