

Supplementary information, Figure S6

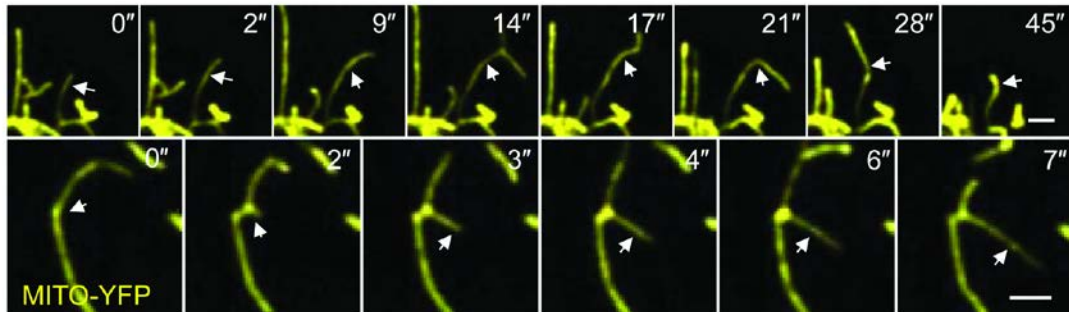


Figure S6 KIF5B drives mitochondrial dynamic tubulation. *KIF5B*^{-/-} NRK cells that stably express Mito-YFP and TET-ON-KIF5B were treated with 0.5 $\mu\text{g/ml}$ tetracycline for 1 h, and then observed with a spinning-disk microscope system. Scale bar, 2 μm . White arrows indicate dynamic tubules.