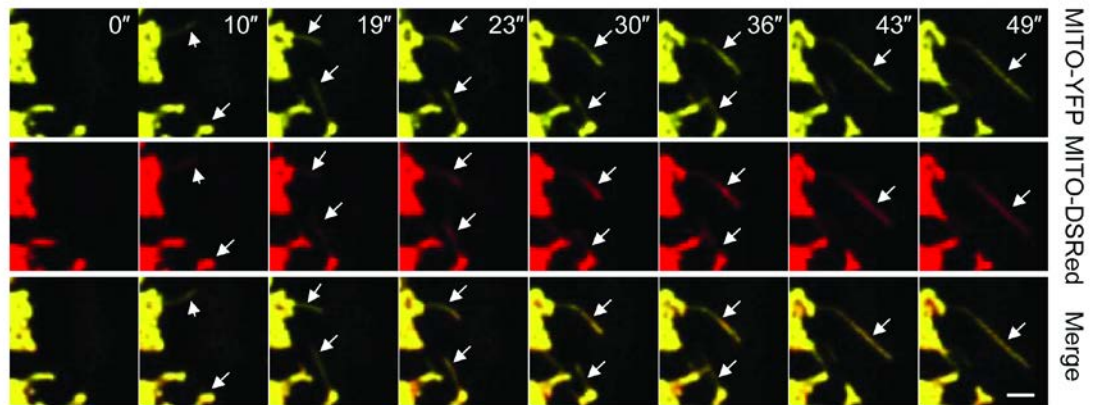


## Supplementary information, Figure S7



**Figure S7** Dynamic tubules contain mitochondrial matrix. *KIF5B*<sup>-/-</sup> NRK cells that stably express Mito-YFP and TET-ON-KIF5B were transfected with Mito-DsRed, treated with 0.5  $\mu\text{g/ml}$  tetracycline for 1 h, and then observed with a spinning-disk microscope system. Scale bar, 2  $\mu\text{m}$ . White arrows indicate dynamic tubules.