

Supplementary information, Figure S9

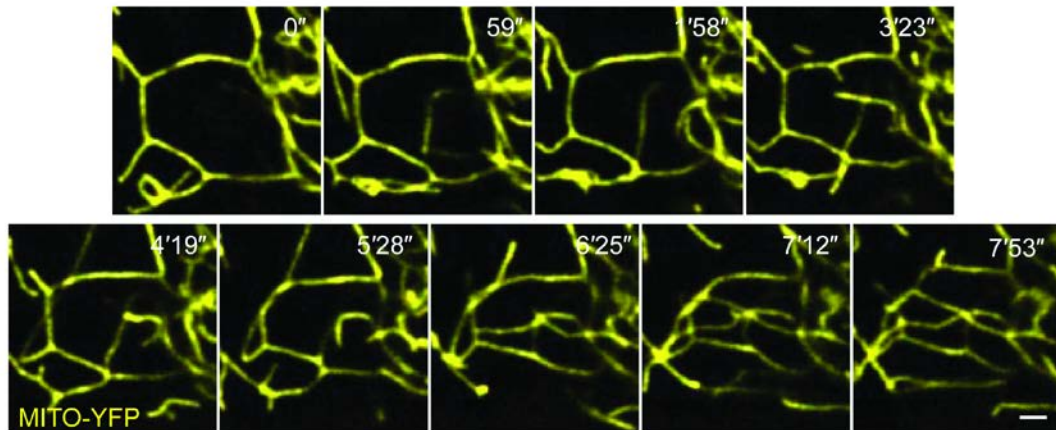


Figure S9 Dynamic tubulation drives network formation. *KIF5B*^{-/-} NRK cells that stably express Mito-YFP and TET-ON-KIF5B were treated with 0.5 $\mu\text{g/ml}$ tetracycline for 2 h. Cells were observed by spinning-disk microscopy, Scale bar, 2 μm .