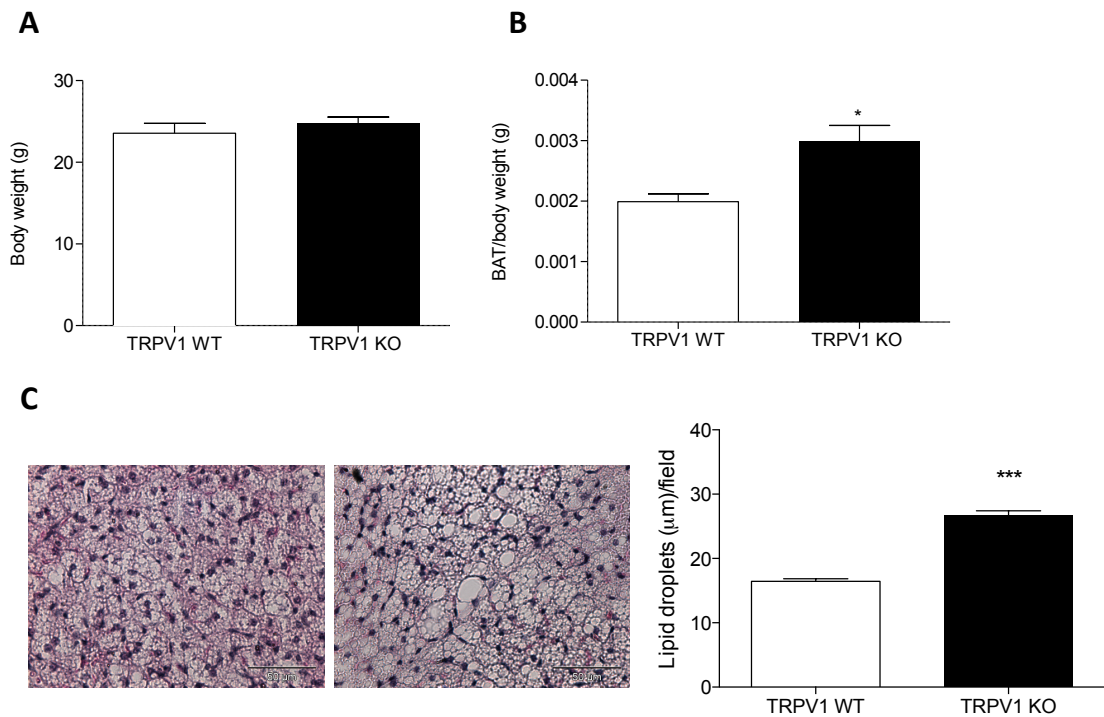


## Supplemental Figure 2.



## Supplemental Figure 2

Increased lipisation in TRPV1 KO brown adipose tissue.

(A) Body mass of juvenile TRPV1 WT and KO mice (n=4-6). (B) Intrascapular BAT mass normalised to body weight is increased in TRPV1 KO mice (n=4-6). (C) H&E staining of BAT from naive TRPV1 WT (left) and KO (right) panel, acquired at x40 magnification; scale bar: 50  $\mu\text{m}$ . Quantification of lipid droplets diameter (n=4-6).

\*  $p < 0.05$ , \*\*  $p < 0.01$  vs WT using two-tailed Student's *t* test.