

***IN VIVO EVALUATION OF ADIPOSE DERIVED STROMAL CELLS DELIVERED WITH A  
NANOFIBER SCAFFOLD FOR TENDON-TO-BONE REPAIR***

**- Supplemental Document -**

Lipner J<sup>1,2</sup>  
Shen H<sup>1</sup>  
Cavinatto L<sup>1</sup>  
Liu W<sup>4</sup>  
Havlioglu N<sup>6</sup>  
Xia Y<sup>5</sup>  
Galatz L<sup>1</sup>  
Thomopoulos S<sup>1,2,3\*</sup>

Washington University in St. Louis, St. Louis, MO:

<sup>1</sup>Department of Orthopedic Surgery

<sup>2</sup>Department of Biomedical Engineering

<sup>3</sup>Department of Mechanical Engineering and Materials Science

Georgia Institute of Technology, Atlanta, GA:

<sup>4</sup>School of Chemical and Biomolecular Engineering

<sup>5</sup>The Wallace H. Coulter Department of Biomedical Engineering

John Cochran VA Medical Center, St. Louis, MO:

<sup>6</sup>Department of Pathology

Corresponding Author:

Stavros Thomopoulos, Ph.D.

Washington University

Department of Orthopaedic Surgery

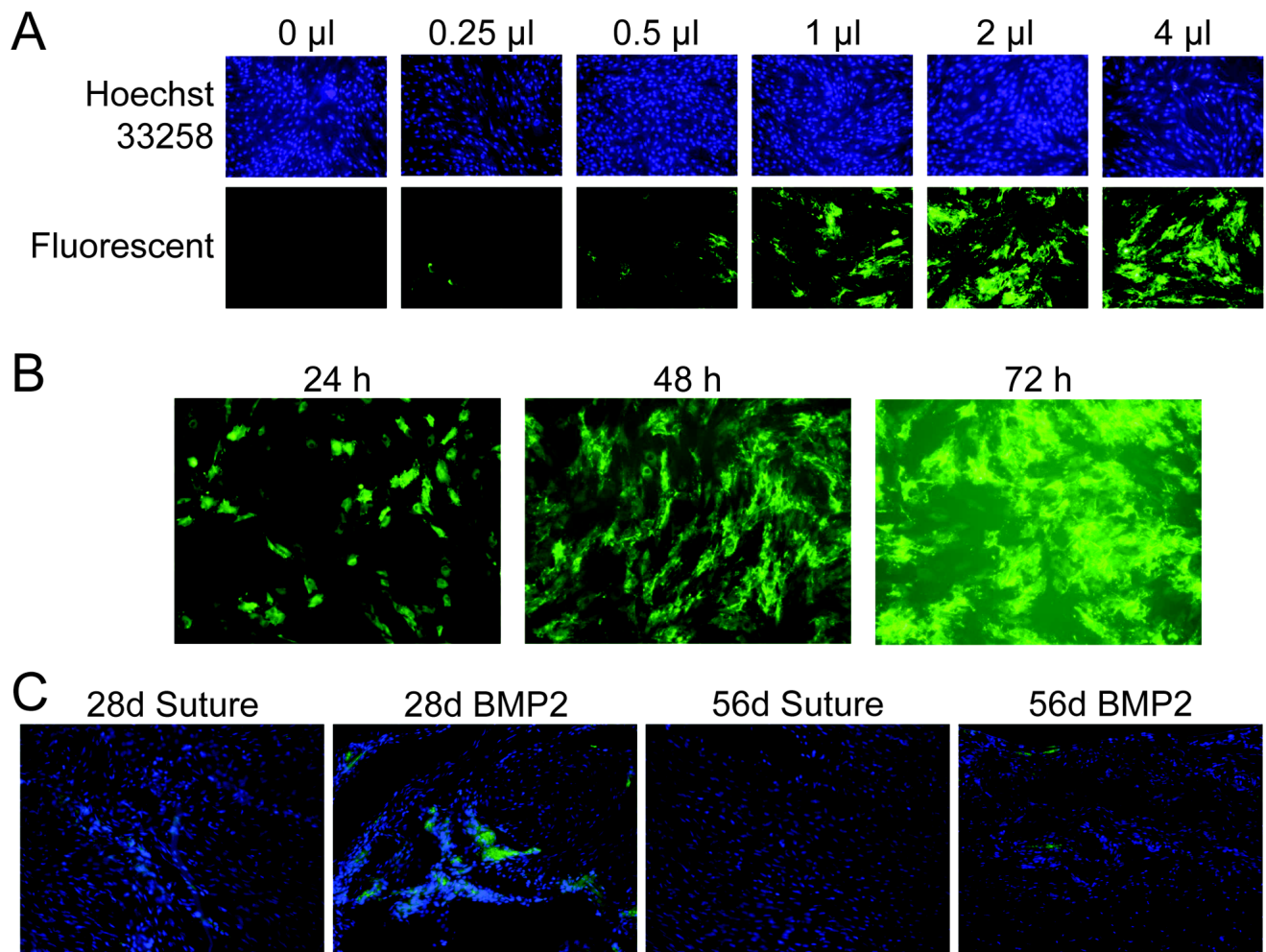
660 South Euclid, Campus Box 8233

St. Louis, MO 63110

Phone: 314-362-8605

Fax: 314-362-0334

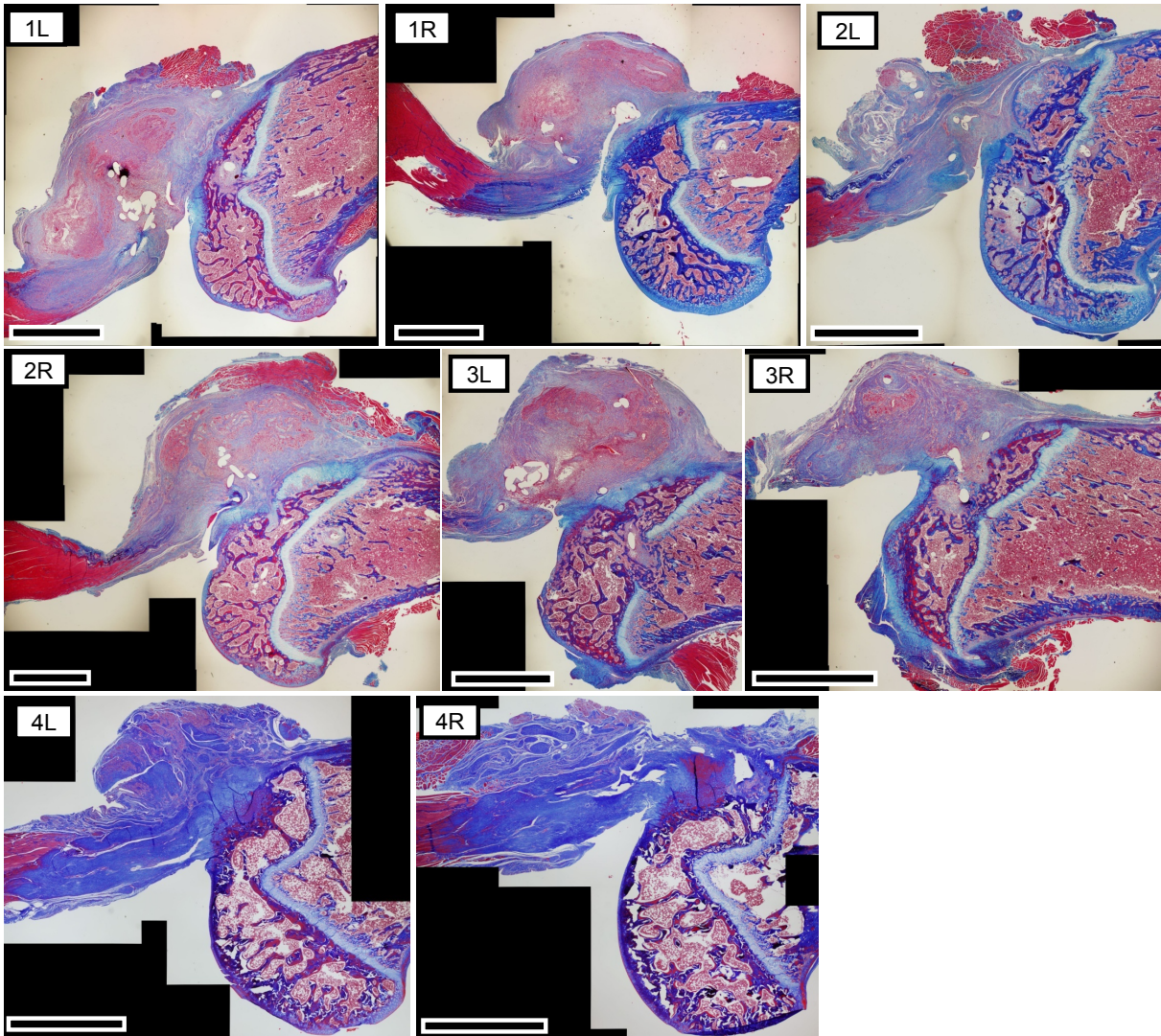
Email: ThomopoulosS@wudosis.wustl.edu



**Supplementary Fig. S1:** (A) ASCs were transduced for 4 hours with various doses of AdBMP-2-YFP vector (0 – 4  $\mu$ l). There was a dose dependent increase in fluorescence. (B) There was an increase in expression over time (note: 24 h image taken at 1/4 s exposure, 48 h and 72 h images taken at 1/20 s exposure). (C) Fluorescent cells were evident near the repair site 28 d and 56 d after implantation. All scale bars: 200  $\mu$ m.

A

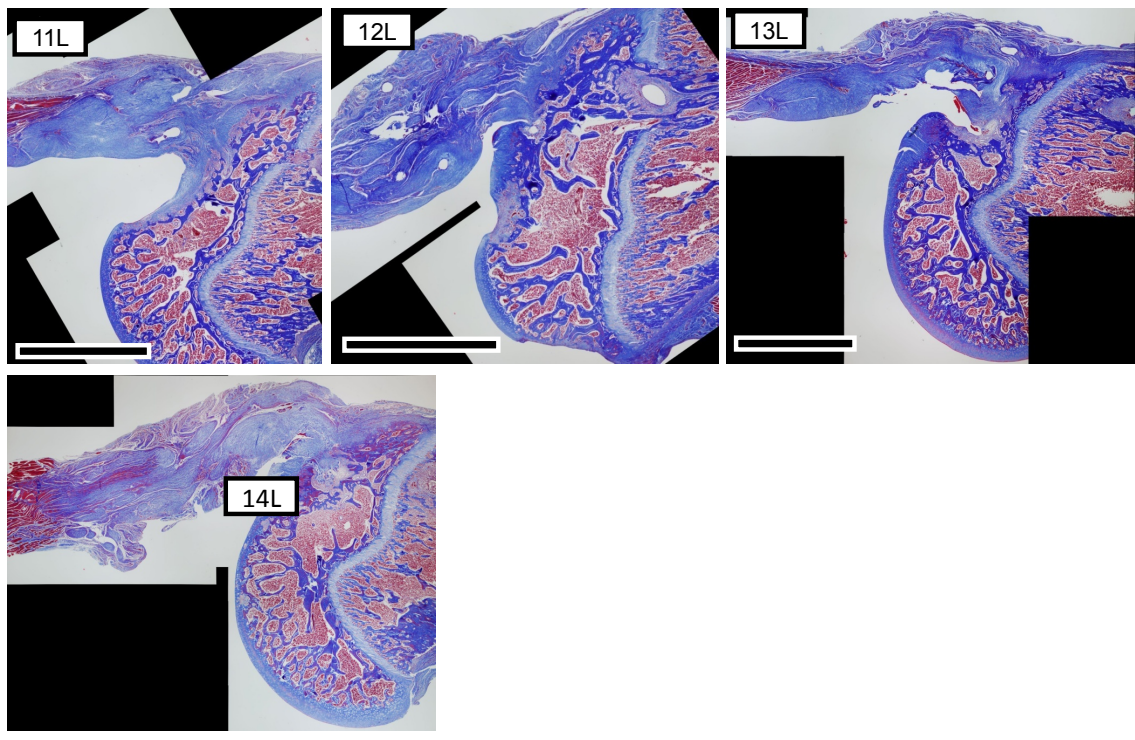
Acellular – 14 Day





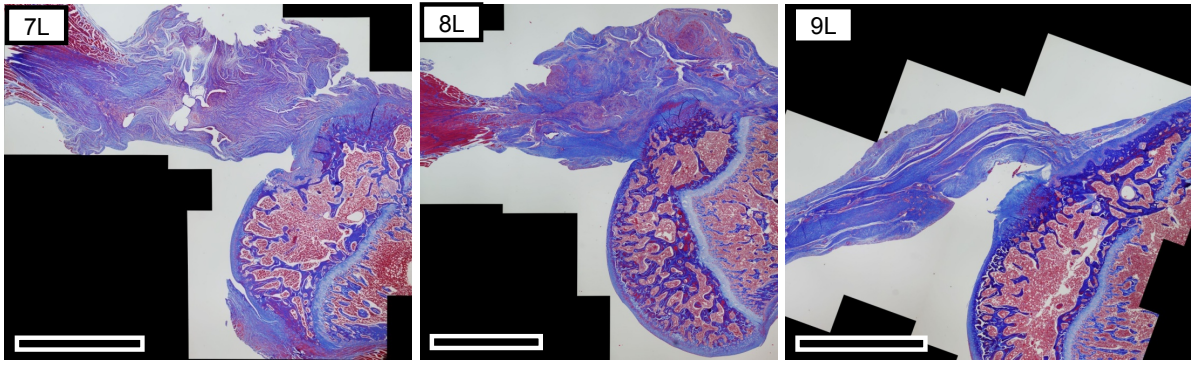
**B**

Suture – 28 Day



**C**

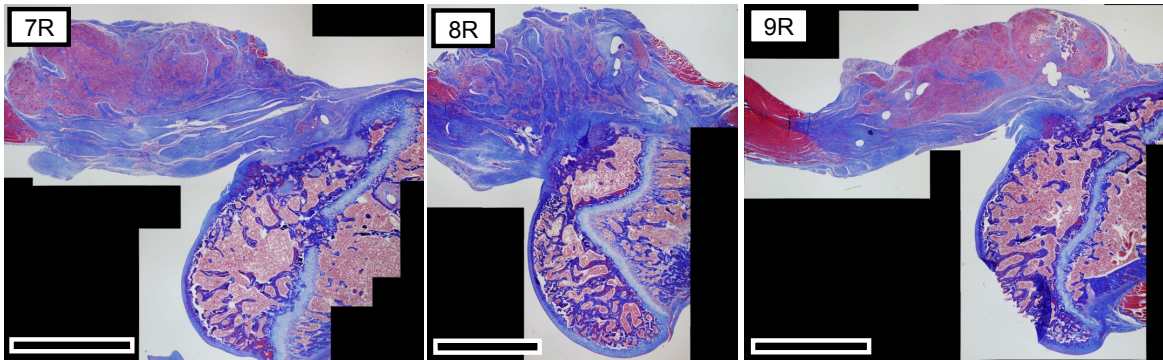
Acellular – 28 Day





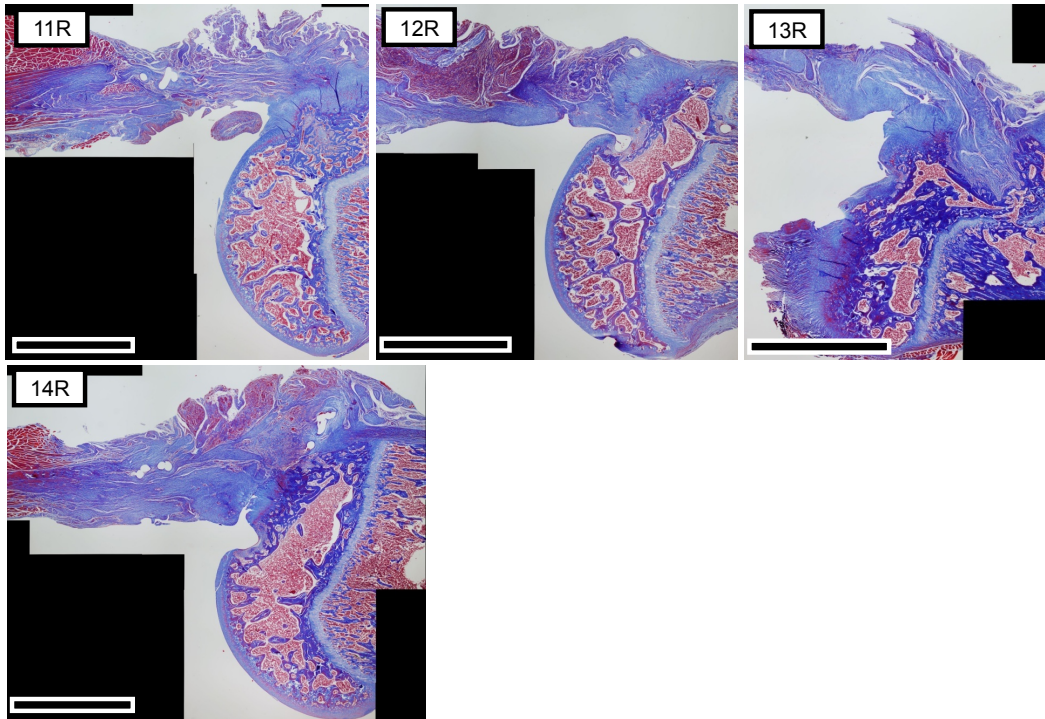
D

Cellular – 28 Day

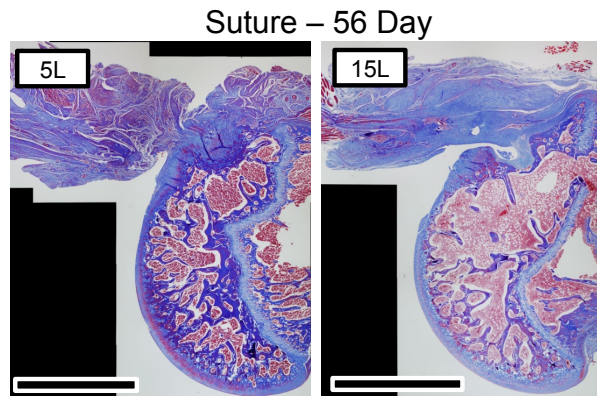


E

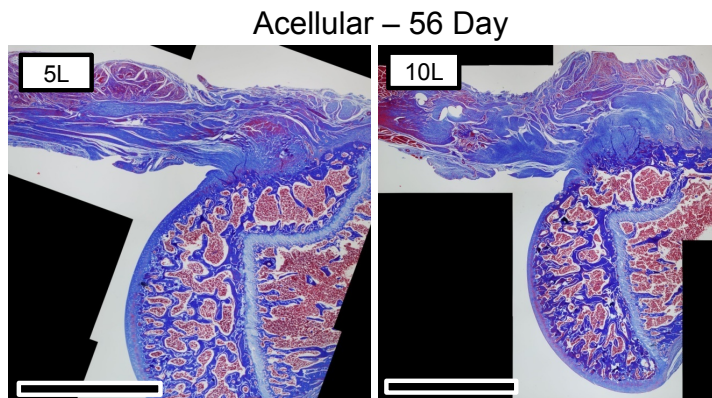
Cellular BMP2 – 28 Day



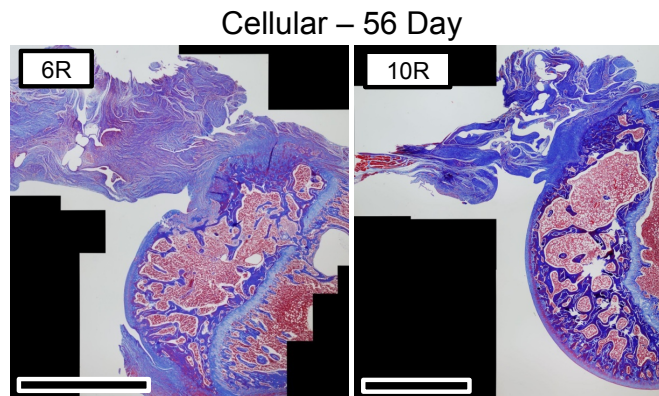
F



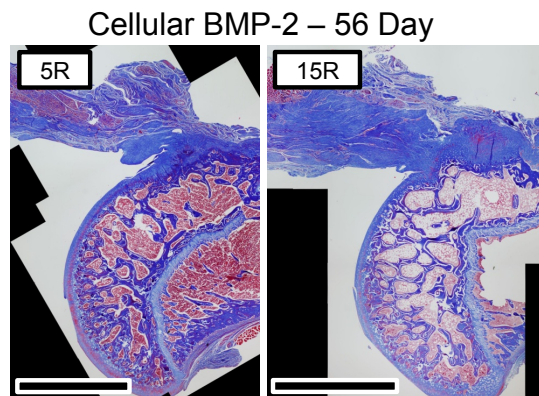
G



H



I



**Supplementary Fig. S2:** Histologic sections from (A) Acellular 14 day, (B) Suture only 28 day, (C) Acellular 28 day, (D) Cellular 28 day, (E) Cellular BMP2 28 day, (F) Suture only 56 day, (G) Acellular 56 day, (H) Cellular 56 day, and (I) Cellular BMP2 56 day, All samples are oriented with the supraspinatus one the left and the humeral head on the right. Scale bars = 2mm.