

SUPPLEMENTAL INFORMATION

A FRET-based System Provides Insight into the Ordered Assembly of Yeast Septin Hetero-octamers

Elizabeth A. Booth^{1a}, Eleanor W. Vane^{1b}, Dustin Dovala^{2c} and Jeremy Thorner^{1*}

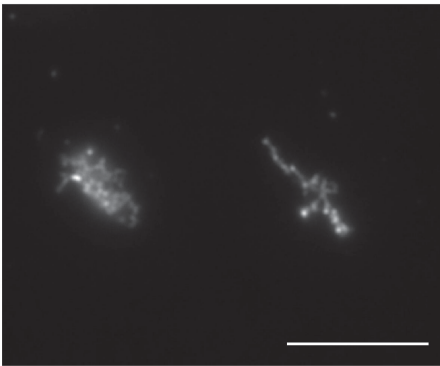
¹Division of Biochemistry, Biophysics, and Structural Biology, Department of Molecular and Cell Biology, University of California, Berkeley, CA 94720-3202

²Program in Microbial Pathogenesis and Host Defense, Department of Microbiology and Immunology, University of California School of Medicine, San Francisco, CA 94158-2200

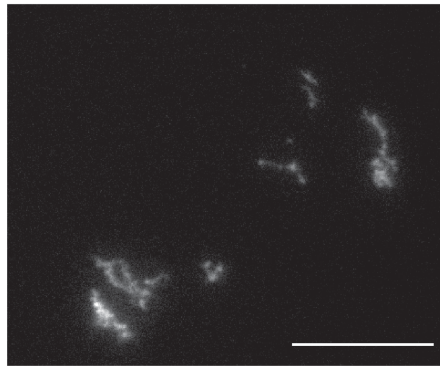
Running title: *A spectroscopic approach for analysis of septin assembly*

*To whom correspondence should be addressed: Prof. Jeremy Thorner, Dept. of Molecular and Cell Biology, University of California, Rm. 526, Barker Hall, Berkeley, CA 94720-3202. Phone: (510) 642-2558, FAX: (510) 642-6420, E-mail: jthorner@berkeley.edu

Shs1 AF555



Shs1 ΔCTE AF555



Shs1 Δα0 AF555

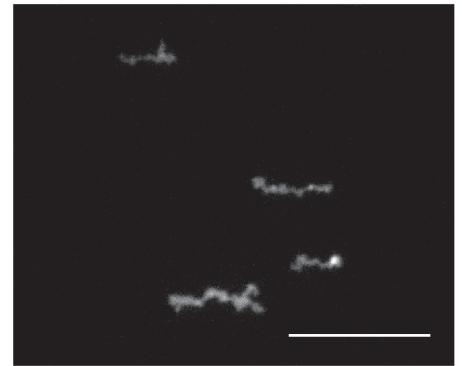


Figure S1: Micrographs of assembled Shs1 septins. Shs1^{AF555} constructs self-assembled for 1 hour at room temperature before plating on PLL coated slides.

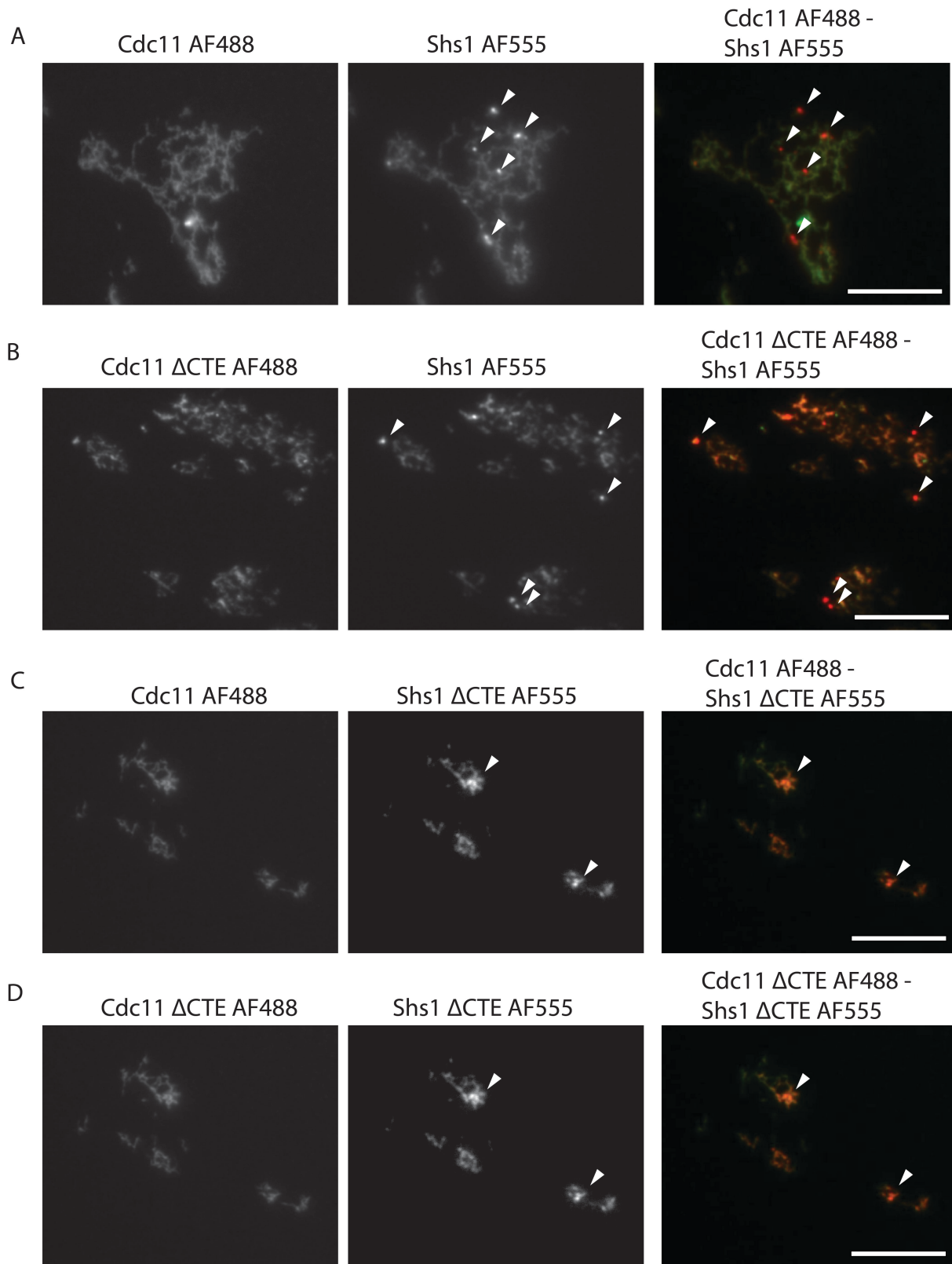


Figure S2: Micrographs of assembled Cdc11 and Shs1 septins with CTE deletions. Equimolar concentrations for Cdc11^{AF488} septins and Shs1^{AF555} septins self-assembled for 1 hour at room temperature before plating on PLL coated slides. (A-D) Leftmost column shows the Cdc11^{AF488} construct. The center column shows the Shs1^{AF555} construct. The rightmost column shows the overlay of the AF555 and AF488 labeled constructs. Arrows indicate the formation of Shs1 puncta.

A spectroscopic approach for analysis of septin assembly

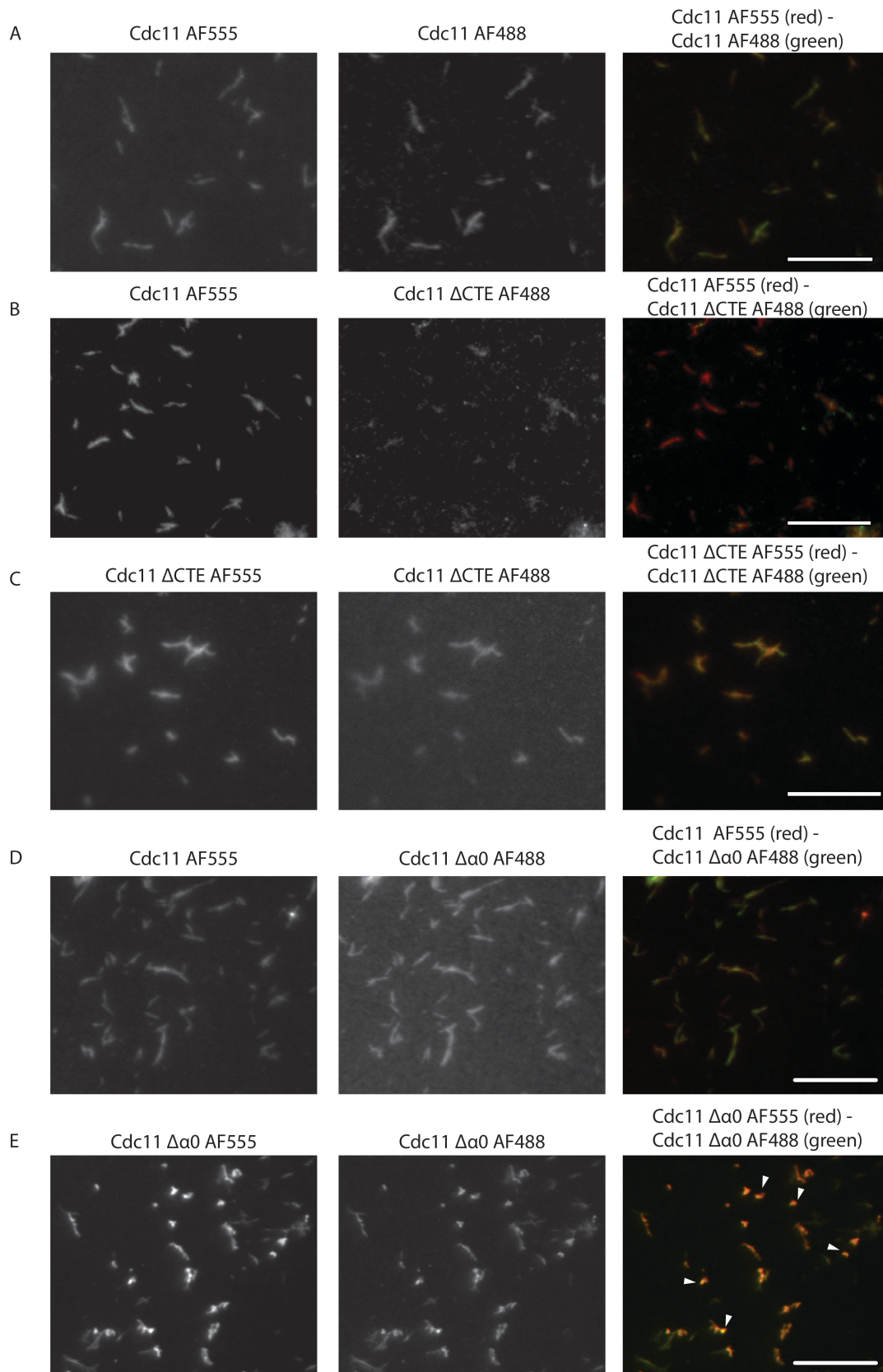


Figure S3: Micrographs of assembled Cdc11 septins. Equimolar concentrations for AF488 and AF555 labeled septins self-assembled for 1 hour at room temperature before plating on PLL coated slides. (A-E) Leftmost column shows the Cdc11^{AF555} construct. The center column shows the Cdc11^{AF488} construct. The rightmost column shows the overlay of the AF555 and AF488 labeled constructs.

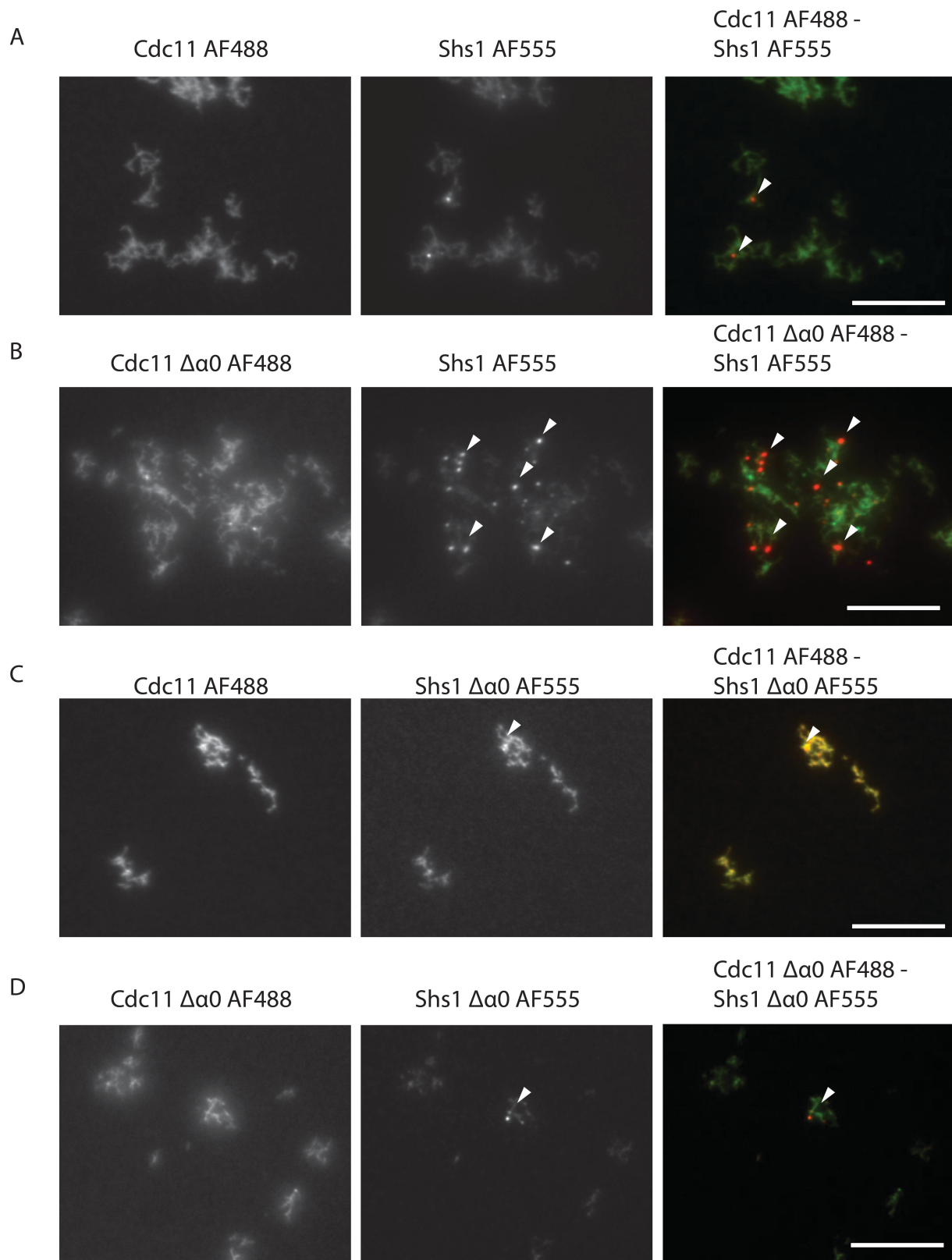


Figure S4: Micrographs of assembled Cdc11 and Shs1 septins with $\alpha 0$ deletions. Equimolar concentrations for Cdc11^{AF488} septins and Shs1^{AF555} septins self-assembled for 1 hour at room temperature before plating on PLL coated slides. (A-D) Leftmost column shows the Cdc11^{AF488} construct. The center column shows the Shs1^{AF555} construct. The rightmost column shows the overlay of the AF555 and AF488 labeled constructs. Arrows indicate the formation of Shs1 puncta.