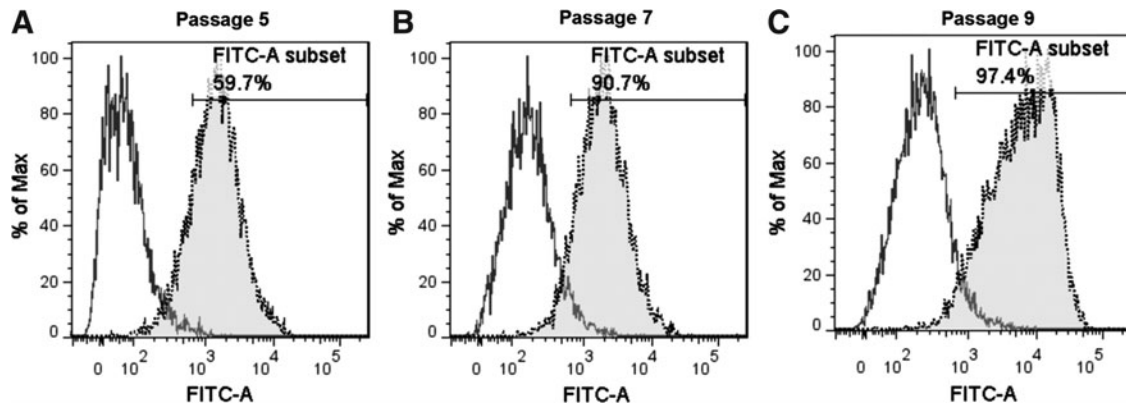


Supplementary Data



SUPPLEMENTARY FIG. S1. Flow cytometry analysis of CD31 expression (FITC-A) for iPSC-ECs with LV-SIRT1 at passages 5 (A), 7 (B), and 9 (C). The percentages of CD31-positive population (*gray histogram*) are shown compared to the isotype control (*white histogram*). EC, endothelial cell; iPSC, induced pluripotent stem cell; LV, lentivirus.