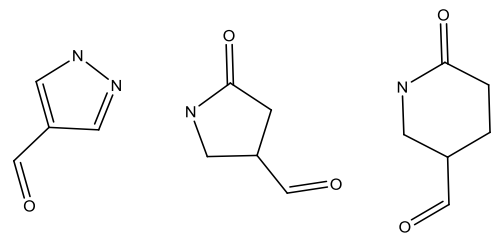


1
2
3
4
5
6
7
8
9
10
11
12
13
14
15

Scheme S1 Structure of fragments used in the substructure cheminformatics search

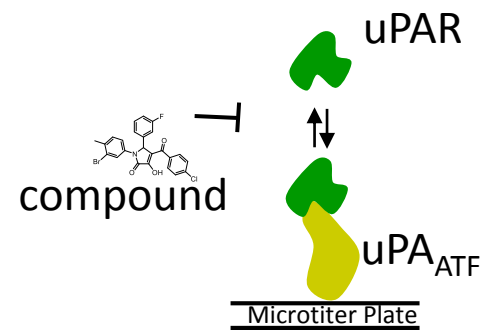
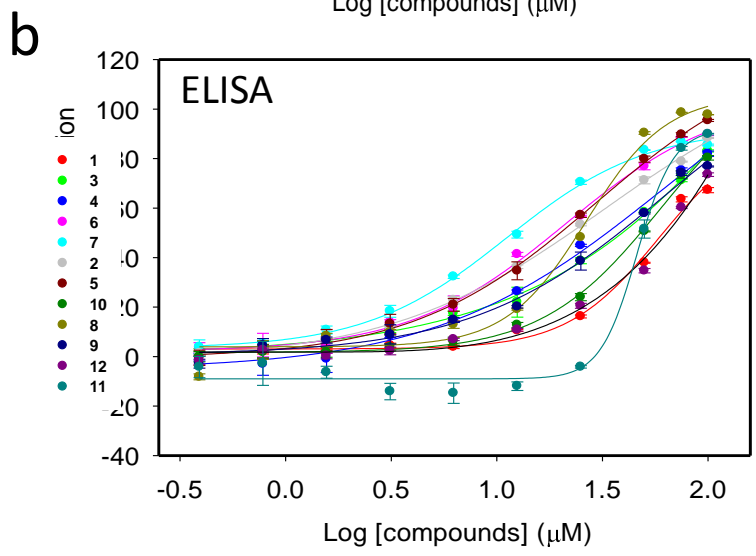
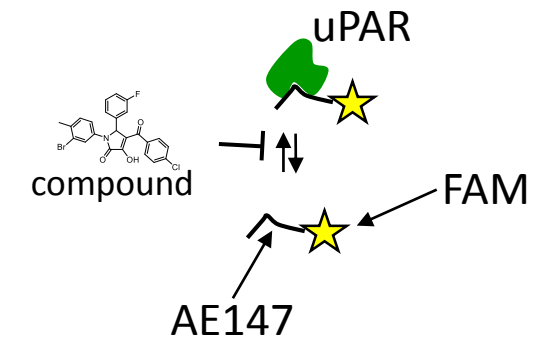
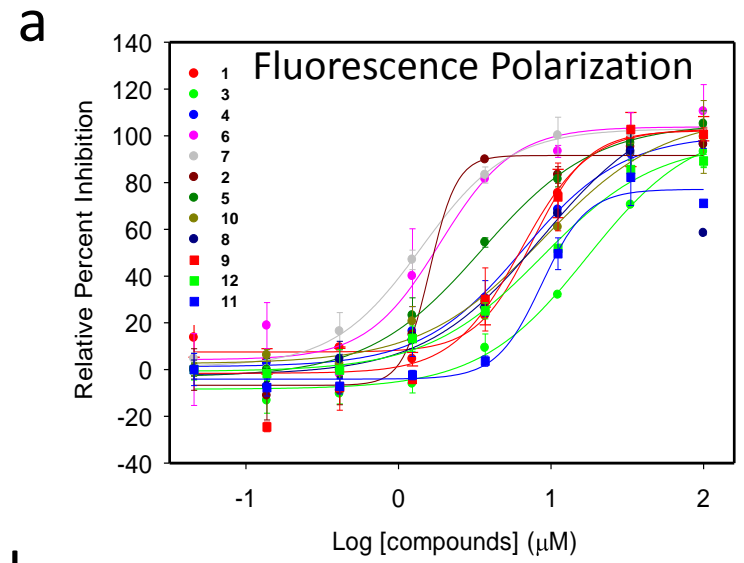
Figure S1. **(a)** Fluorescence polarization (mP) for FAM-AE147 and uPAR measured at increasing concentration of 12 candidate compounds. **(b)** An ELISA was used to measure inhibition of uPAR binding to uPA_{ATF}-coated microtiter plate by serial dilutions of 12 candidate compounds.

Scheme S1



10
11 Fragments used in substructure search that led to **1**

1
2
3
4
5
6
7
8
9
10
11
12
13
14
15
16
17
18
19
20
21
22
23
24
25
26
27
28
29
30
31
32
33
34
35
36
37
38
39
40
41
42
43



(a) Fluorescence polarization (mP) for FAM-AE147 and uPAR measured at increasing concentration of compounds. Error bars represent means \pm S.D. **(b)** An ELISA was used to measure inhibition of uPAR binding to uPA_{ATF}-coated microtiter plate by serial dilutions of compounds. Error bars represent means \pm S.D.