

Supplementary Material for:

## **Metabolic profiling comparison of human pancreatic ductal epithelial cells and three pancreatic cancer cell lines using NMR based metabonomics.**

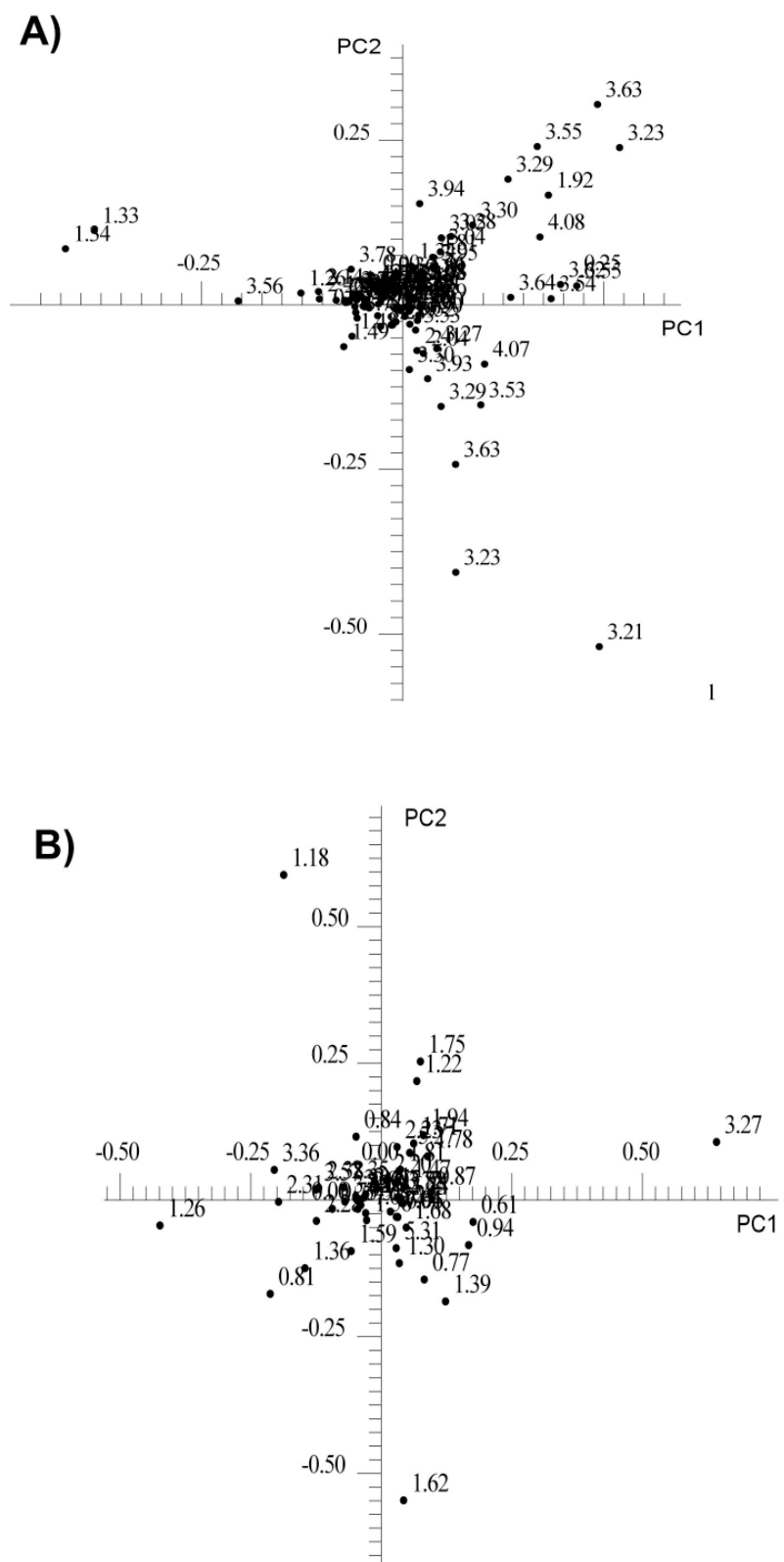
Miki Watanabe<sup>a</sup>, Sulaiman Sheriff<sup>b</sup>, Kenneth B. Lewis<sup>a</sup>, Junho Cho<sup>a</sup>, Stuart L. Tinch<sup>a</sup>  
Ambikaipakan Balasubramaniam<sup>b,c,d</sup> and Michael A. Kennedy<sup>a\*</sup>

### **Contents:**

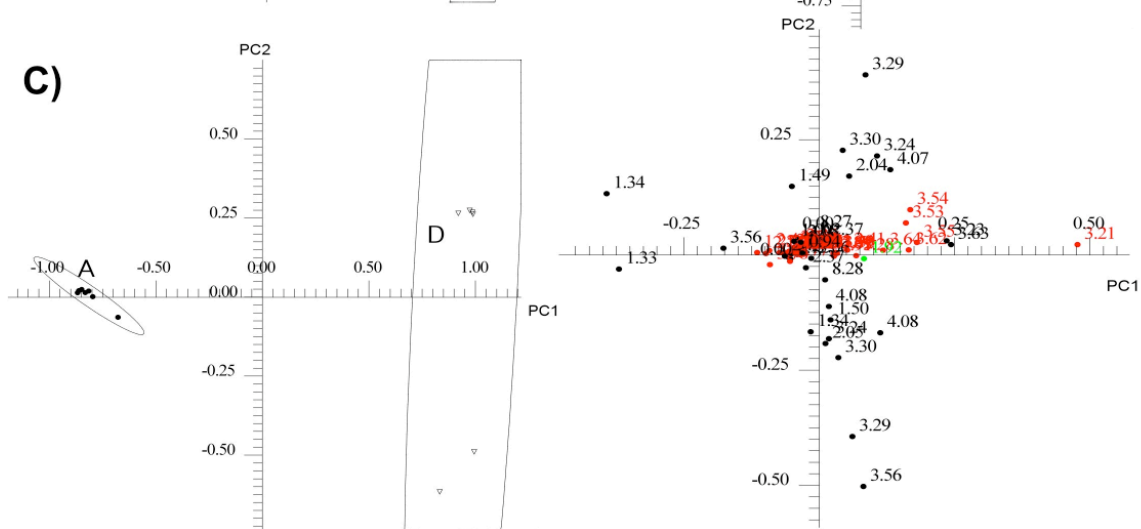
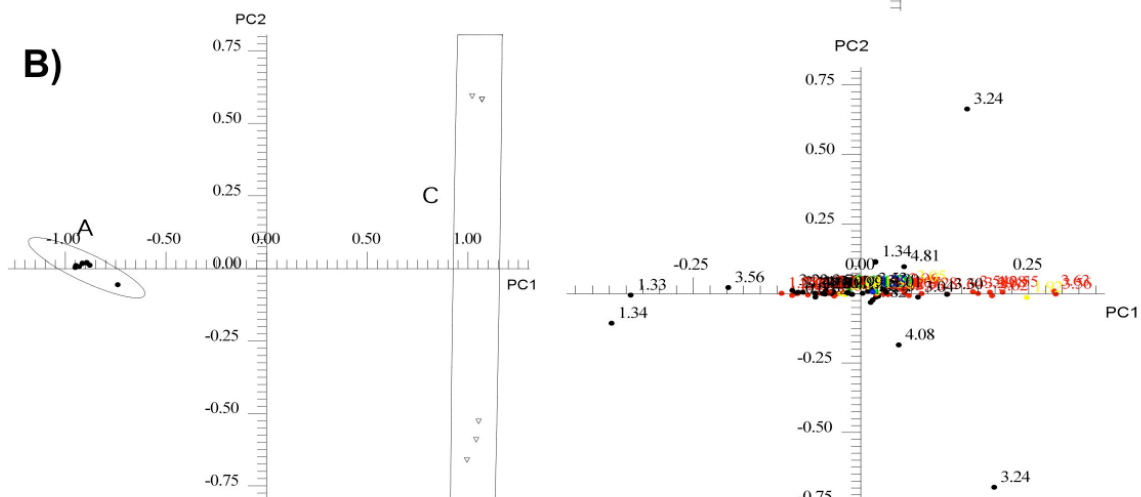
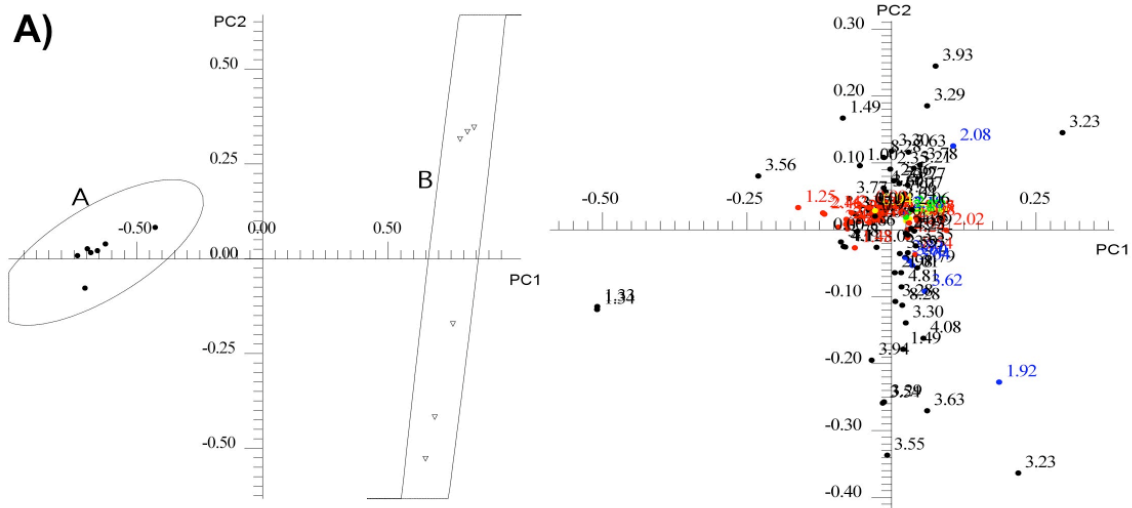
**Supplemental Figure 1.** (A) Two-dimensional PC1 versus PC2 loadings plot corresponding to the scores plot of hydrophilic cell extract data in Fig 3A. (B) Two-dimensional PC1 versus PC2 loadings plot corresponding to the scores plot of lipophilic cell extract data in Fig 3B.

**Supplemental Figure 2.** Two-dimensional PC1 versus PC2 scores plot and the loadings plot comparing hydrophilic extracts of A)H6C7 and Miapaca-2, B)H6C7 and Panc-1, C)H6C7 and AsPC-1, D)Miapaca-2 and Panc-1, E)Miapaca-2 and AsPC-1, F)Panc-1 and AsPC-1.

**Supplemental Figure 3.** Two-dimensional PC1 versus PC2 scores plot and the loadings plot comparing lipophilic extracts of A)H6C7 and Miapaca-2, B)H6C7 and Panc-1, C)H6C7 and AsPC-1, D)Miapaca-2 and Panc-1, E)Miapaca-2 and AsPC-1, F)Panc-1 and AsPC-1.

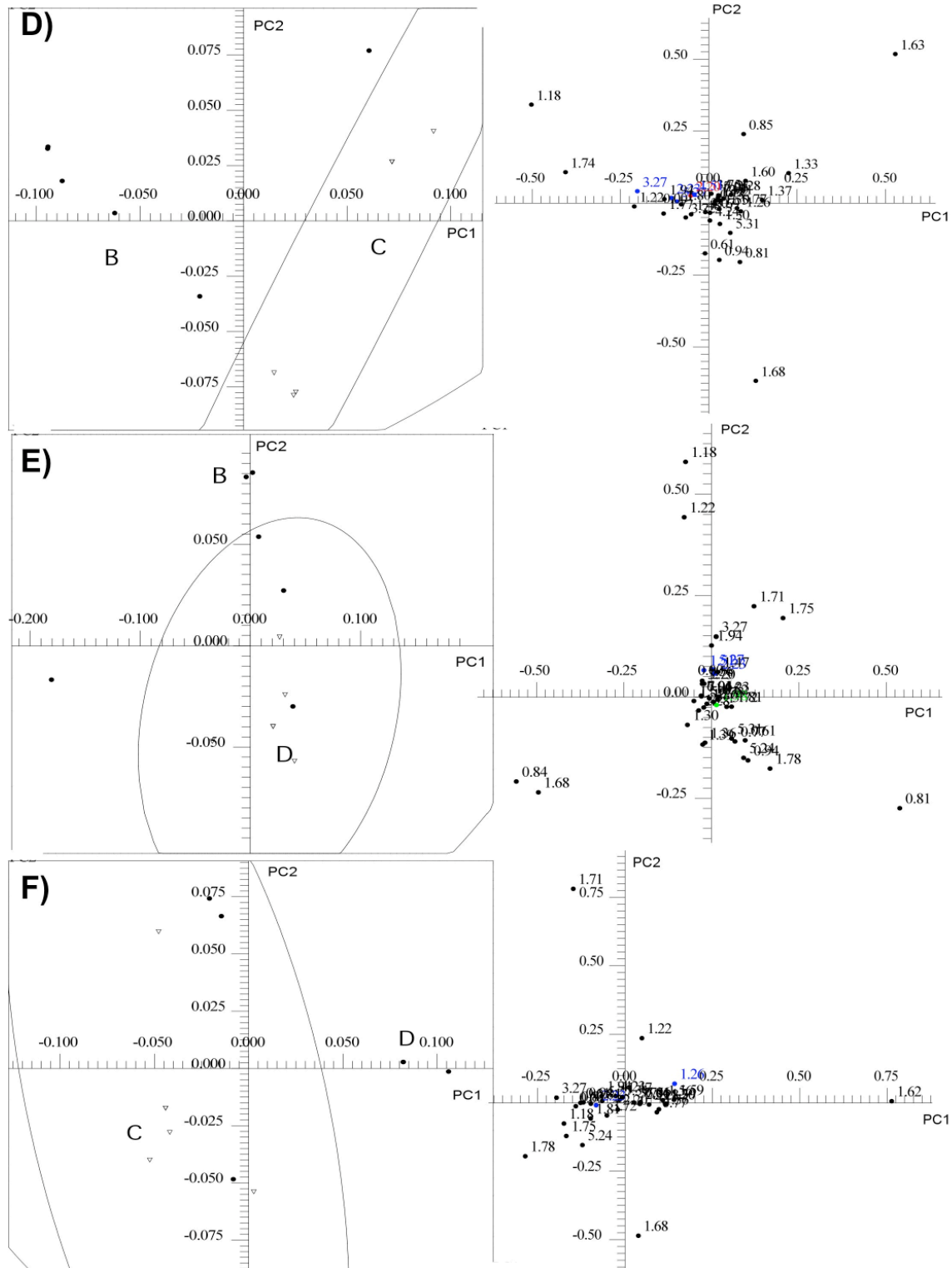


**Supplemental Figure 1.** (A) Two-dimensional PC1 versus PC2 loadings plot corresponding to the scores plot of hydrophilic cell extract data in Fig 3A. (B) Two-dimensional PC1 versus PC2 loadings plot corresponding to the scores plot of lipophilic cell extract data in Fig 3B.









**Supplemental Figure 3.** Two-dimensional PC1 versus PC2 scores plot and the loadings plot comparing lipophilic extracts of A)H6C7 and Miapaca-2, B)H6C7 and Panc-1, C)H6C7 and AsPC-1, D)Miapaca-2 and Panc-1, E)Miapaca-2 and AsPC-1, F)Panc-1 and AsPC-1. In the scores plot, the 95% confidence interval for the two clusters of data points were indicated with oval lines. The Bonferroni-corrected  $p$ -values from 0.03 ppm buckets for lipophilic cell extracts were determined for each comparison and listed in Table 2. The loading plots are color-coded according to bucket  $p$ -values: Black ( $>\alpha$ value), Blue ( $\alpha$ -value -  $10^{-5}$ ), Green ( $10^{-5}$  -  $10^{-6}$ ), Yellow ( $10^{-6}$  -  $10^{-7}$ ), Red ( $10^{-7}$  - 0).