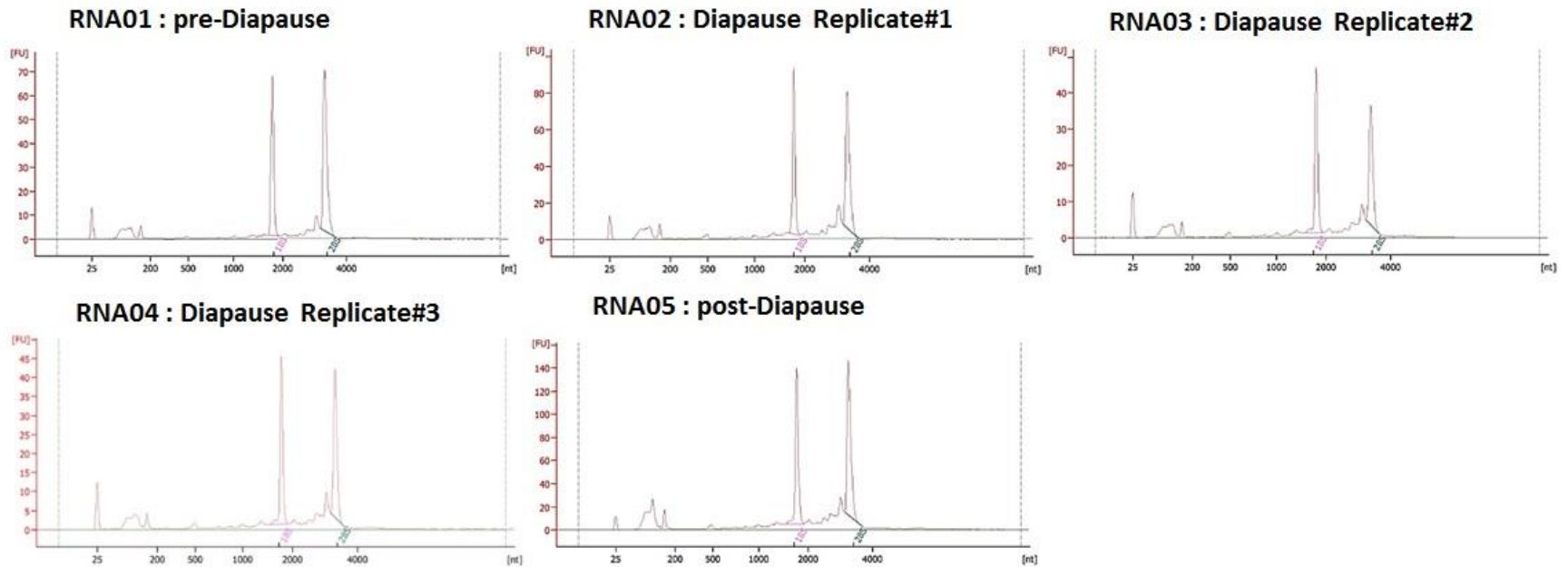


Supplementary Fig. S1.

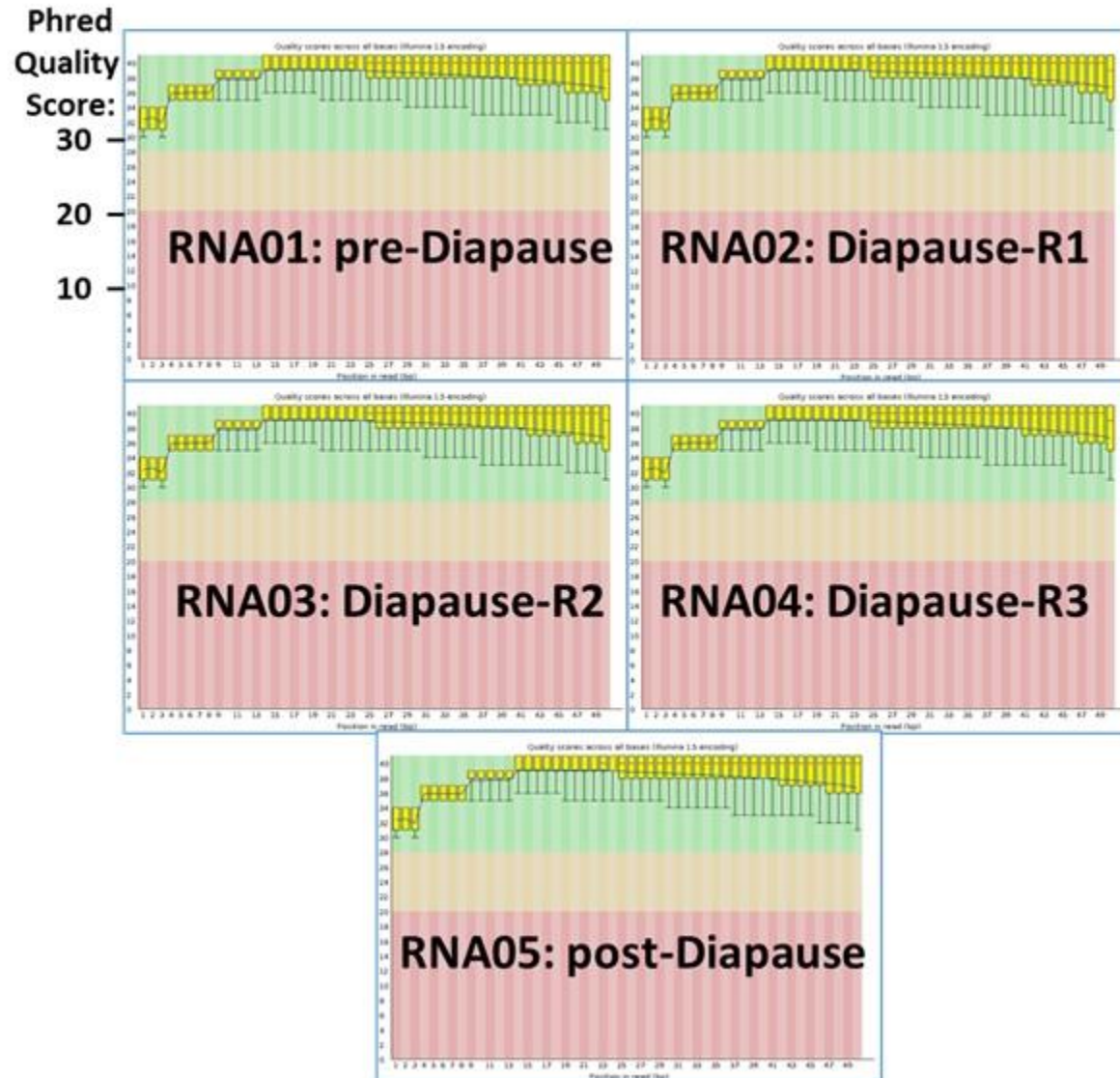
A.

RNA Sample	NanoDrop 8000		BGI - Agilent2100		
	Total Mass (μg)	$\text{OD}_{260/280}$	Total Mass (μg)	RIN	28S/18S
01	213.8	2.13	163.9	9.4	1.3
02	238.1	2.08	232.4	9.0	1.1
03	144.6	2.00	125.2	9.0	0.8
04	164.3	2.01	125.1	8.0	0.9
05	24.6	1.95	31.3	8.8	1.1

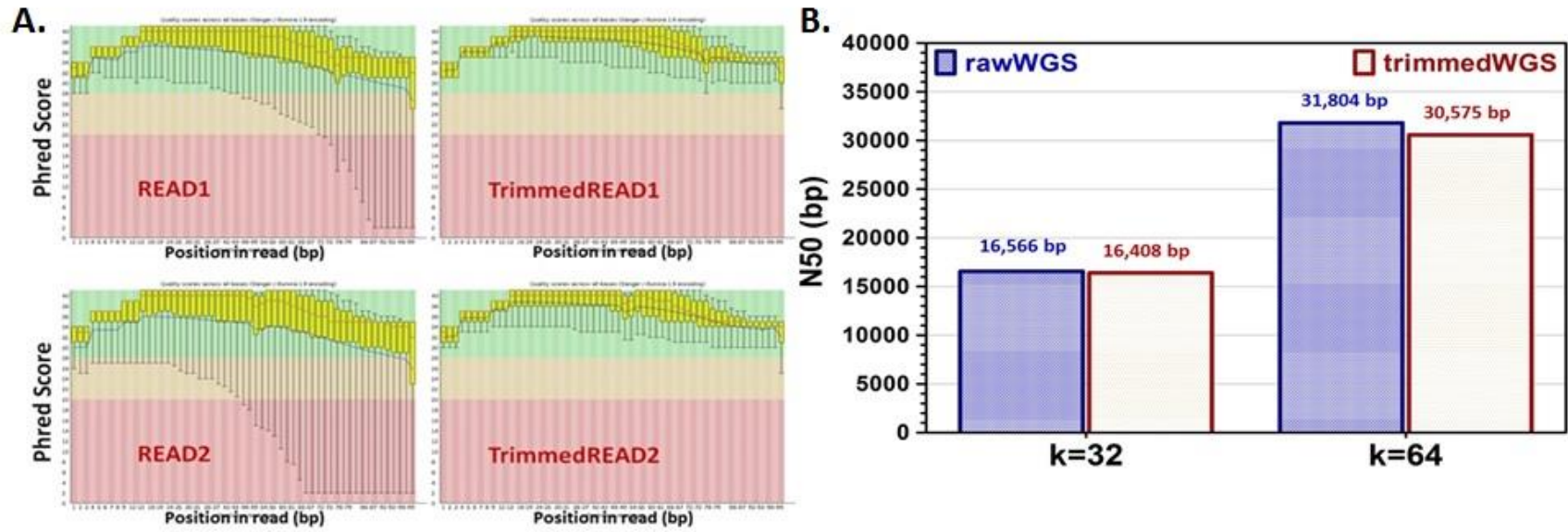
B.



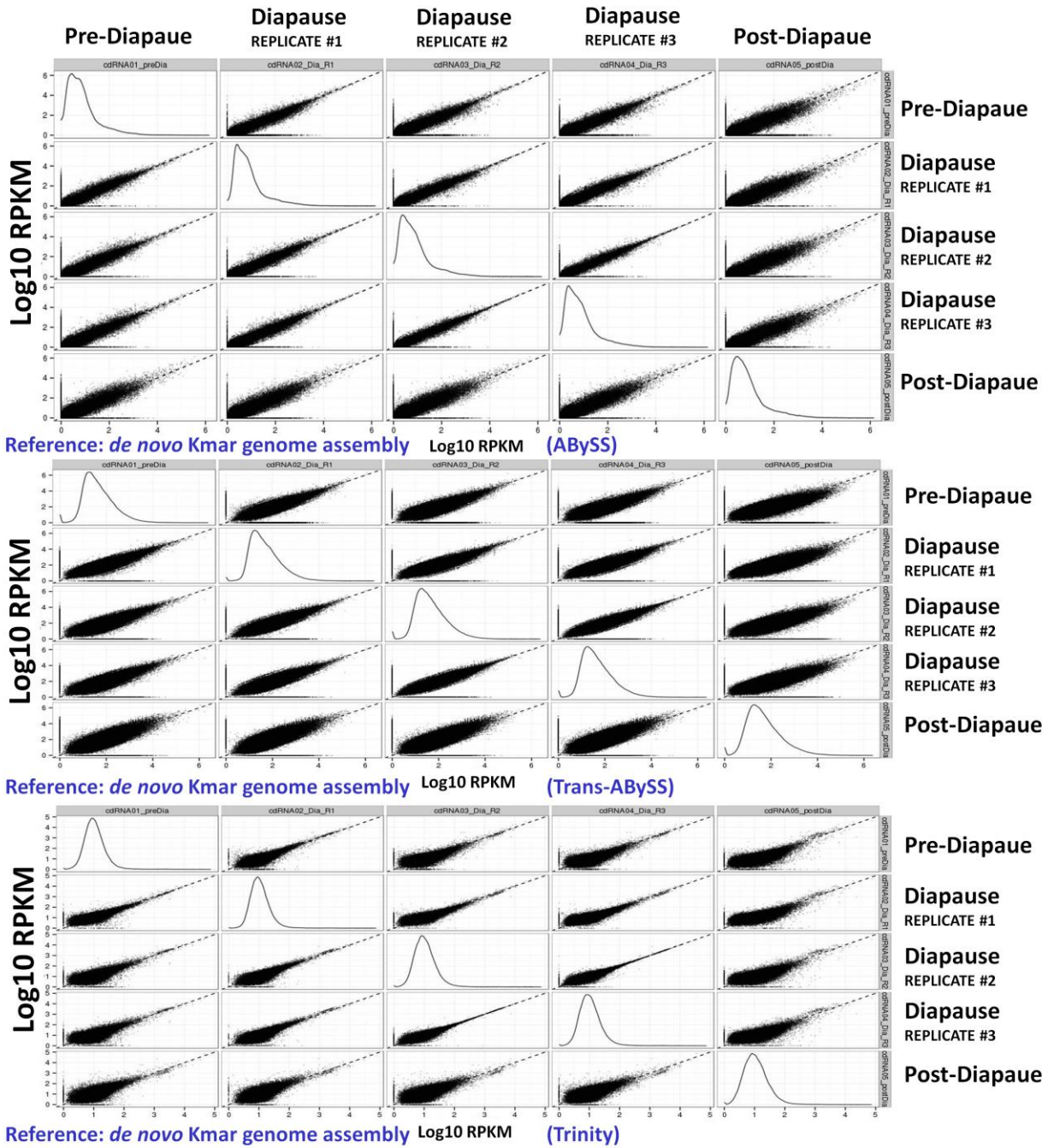
Supplementary Fig. S2.



Supplementary Fig. S3.



Supplementary Fig. S4.



Supplementary Fig. S5.

