



Published in final edited form as:

Mol Psychiatry. 2014 August ; 19(8): 853. doi:10.1038/mp.2014.85.

Extreme early-life anxiety is associated with an evolutionarily conserved reduction in the strength of intrinsic functional connectivity between the dorsolateral prefrontal cortex and the central nucleus of the amygdala

RM Birn^{1,2,3,4,5,12}, AJ Shackman^{6,7,8,12}, JA Oler^{2,3,4}, LE Williams^{2,3,4}, DR McFarlin^{2,3,4,5}, GM Rogers², SE Shelton², AL Alexander^{1,5}, DS Pine⁹, MJ Slattery², RJ Davidson^{2,3,5,10,11}, AS Fox^{2,3,4,5,10,11}, and NH Kalin^{2,3,4,5,10}

¹Department of Medical Physics, University of Wisconsin, Madison, WI, USA

²Department of Psychiatry, University of Wisconsin, Madison, WI, USA

³HealthEmotions Research Institute, University of Wisconsin, Madison, WI, USA

⁴Lane Neuroimaging Laboratory, University of Wisconsin, Madison, WI, USA

⁵Waisman Laboratory for Brain Imaging and Behavior, University Wisconsin, Madison, WI, USA

⁶Department of Psychology, University of Maryland, College Park, MD, USA

⁷Neuroscience and Cognitive Science Program, University of Maryland, College Park, MD, USA

⁸Maryland Neuroimaging Center, University of Maryland, College Park, MD, USA

⁹Section on Development and Affective Neuroscience, National Institute of Mental Health, Bethesda, MD, USA

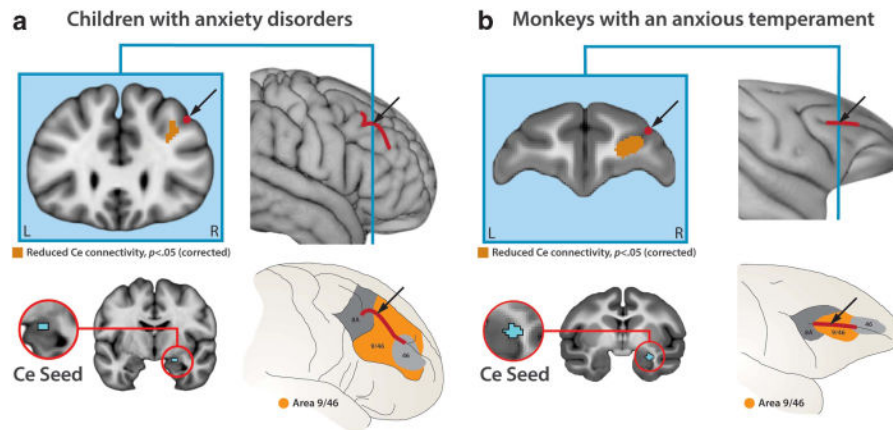
¹⁰Department of Psychology, University of Wisconsin, Madison, WI, USA

¹¹Center for Investigating Healthy Minds, University of Wisconsin, Madison, WI, USA

References

1. Badre D, D'Esposito M. Is the rostro-caudal axis of the frontal lobe hierarchical? *Nat Rev Neurosci*. 2009; 10:659–669. [PubMed: 19672274]

¹²These authors contributed equally to this work.



(a) Children with anxiety disorders. The bottom-left panel shows the Ce seed (cyan in red ring). The upper-left panel depicts a coronal slice through the human dIPFC cluster (dark orange). The bottom-right panel shows the location of the dIPFC cluster relative to the architectonic subdivisions of the human dIPFC. **(b)** Monkeys with a more anxious temperament. Conventions are similar to those in (a). The bottom-right panels were adapted with permission from Badre and D’Esposito.¹ For more information on this topic, please refer to the article by Birn et al. on pages 915–922.