

Table S1. Cerebellar regions of the default-mode network with increased network homogeneity in the patients and the siblings

Cluster location	Peak (MNI)			Number of voxels	<i>T</i> value
	x	y	z		
<i>Patients > Controls</i>					
Right Crus II	15	-84	-33	30	4.4486
<i>Siblings > Controls</i>					
Right Crus II	9	-57	-24	12	3.7543

MNI = Montreal Neurological Institute

Figure Legends



Figure S1. Brain regions having significant connectivity with the default-mode network seed in the patients/siblings/controls. Red denotes increased connectivity and the color bar indicates *T* values from voxel-based one-sample *t*-tests.

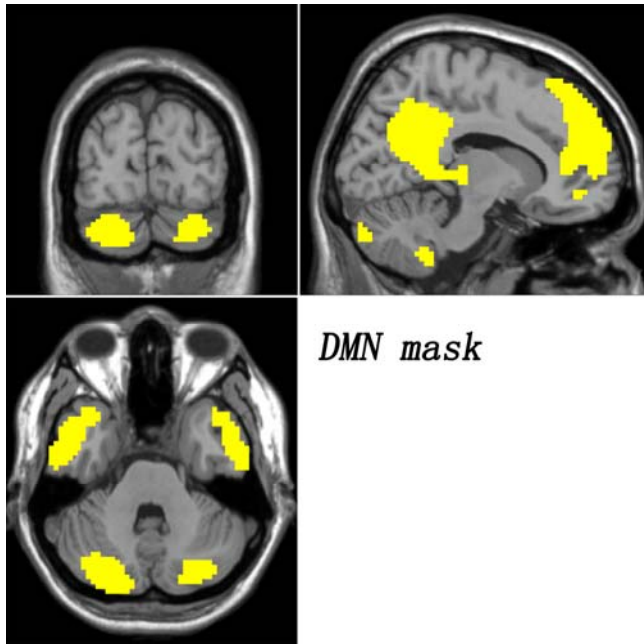


Figure S2. The default-mode network mask generated from the union of the results of one-sample t -tests from 3 groups.

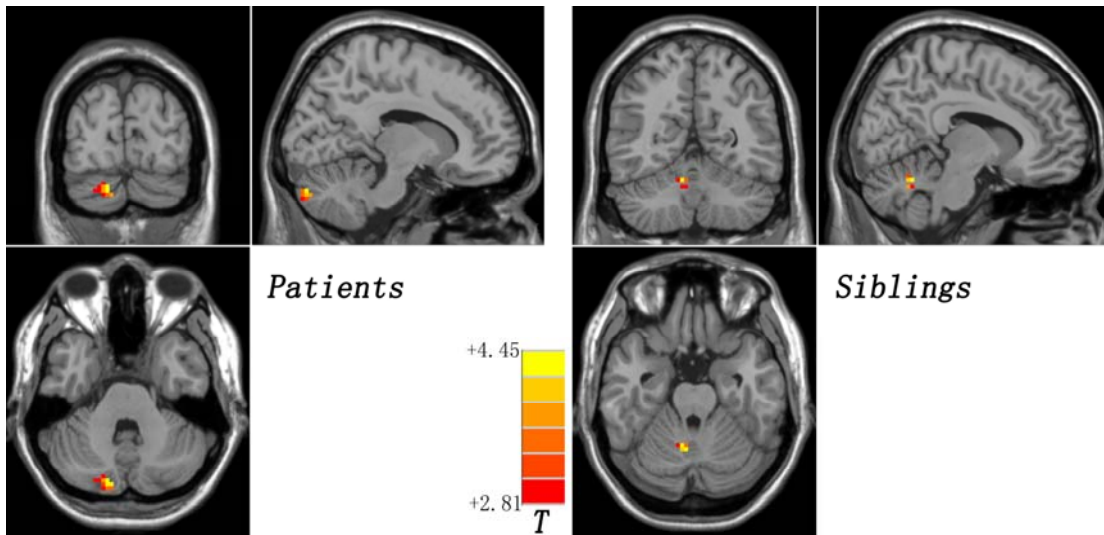


Figure S3. Increased network homogeneity in the right Crus II shared by the patients and the siblings. Red denotes increased connectivity in the patients/siblings relative to the controls and the color bar indicates T values from post hoc t -tests.