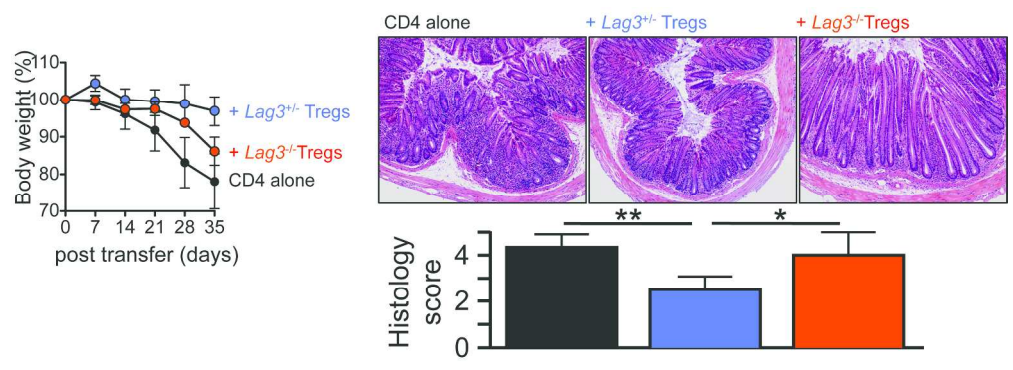


Supplementary Fig. S1. Phenotypes of WT and IL-27R α ^{-/-} Tregs.

(a) nTreg development was examined in WT Foxp3.GFP and IL-27R α ^{-/-} Foxp3.GFP mice. (b) Surface expression of the listed molecules was determined by flow analysis. Histograms shown are CD25⁺CD4⁺ gated cells. (c) Treg suppression was determined by in vitro suppression assay.

240x72mm (300 x 300 DPI)



Supplementary Fig. S2. *Lag3*^{-/-} Tregs express impaired suppressive function.
Groups of *Rag1*^{-/-} mice received naive CD4 T cells alone, together with *Lag3*^{+/-} or with *Lag3*^{-/-} Tregs. Body weight was weekly measured to monitor colitis development. Colonic inflammation was examined by H&E staining at 35 days post transfer.

231x108mm (300 x 300 DPI)