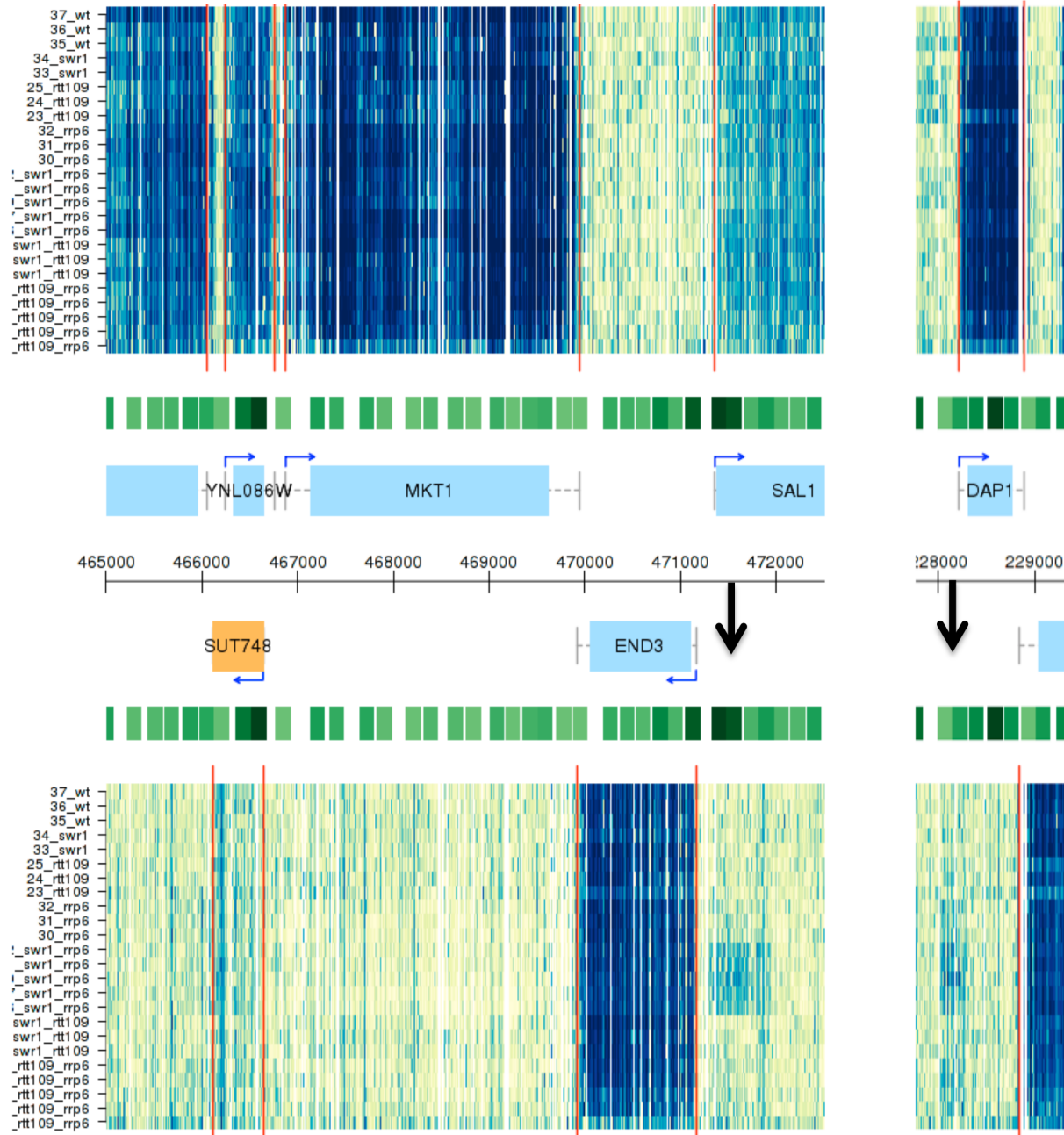
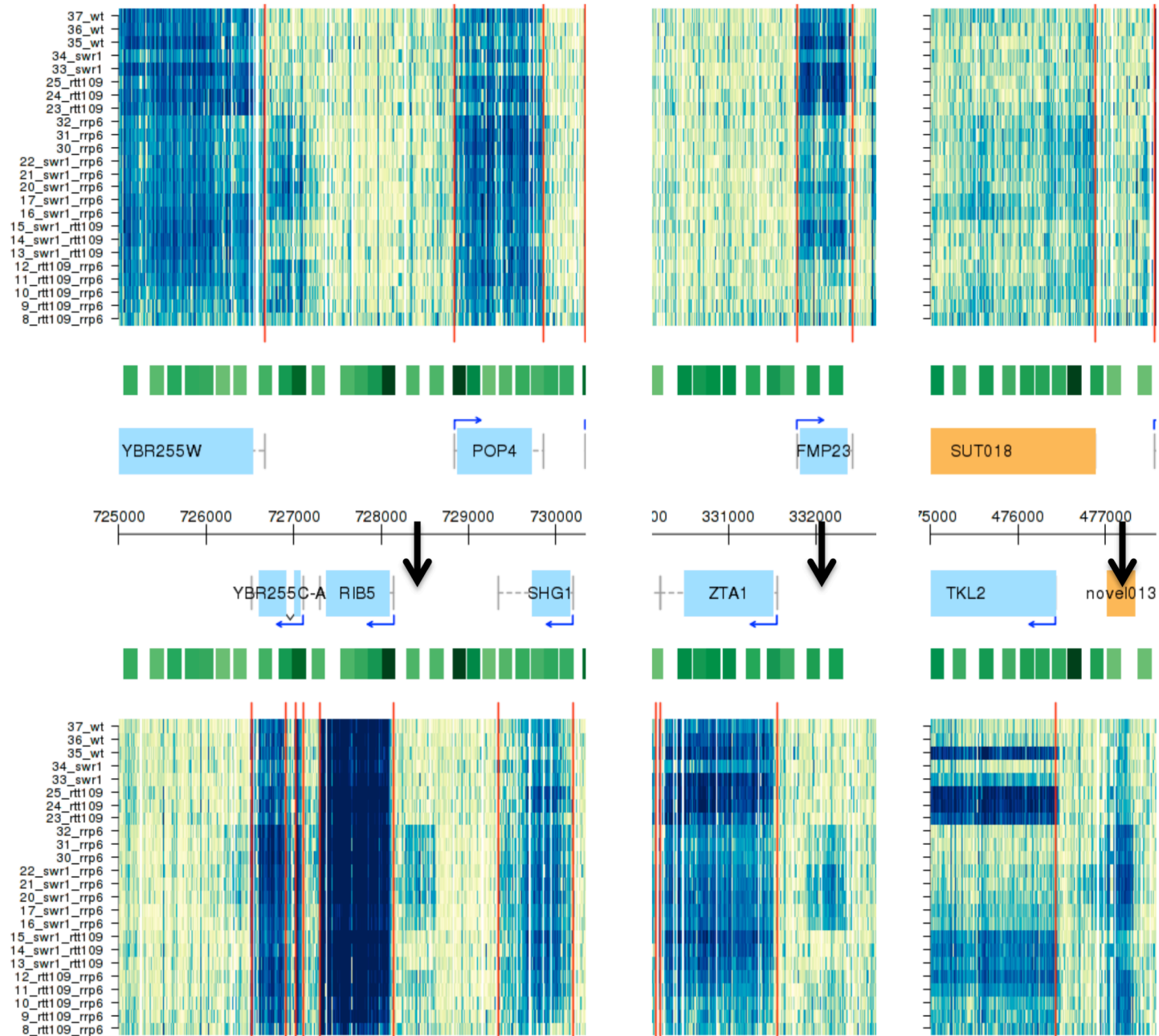


A)

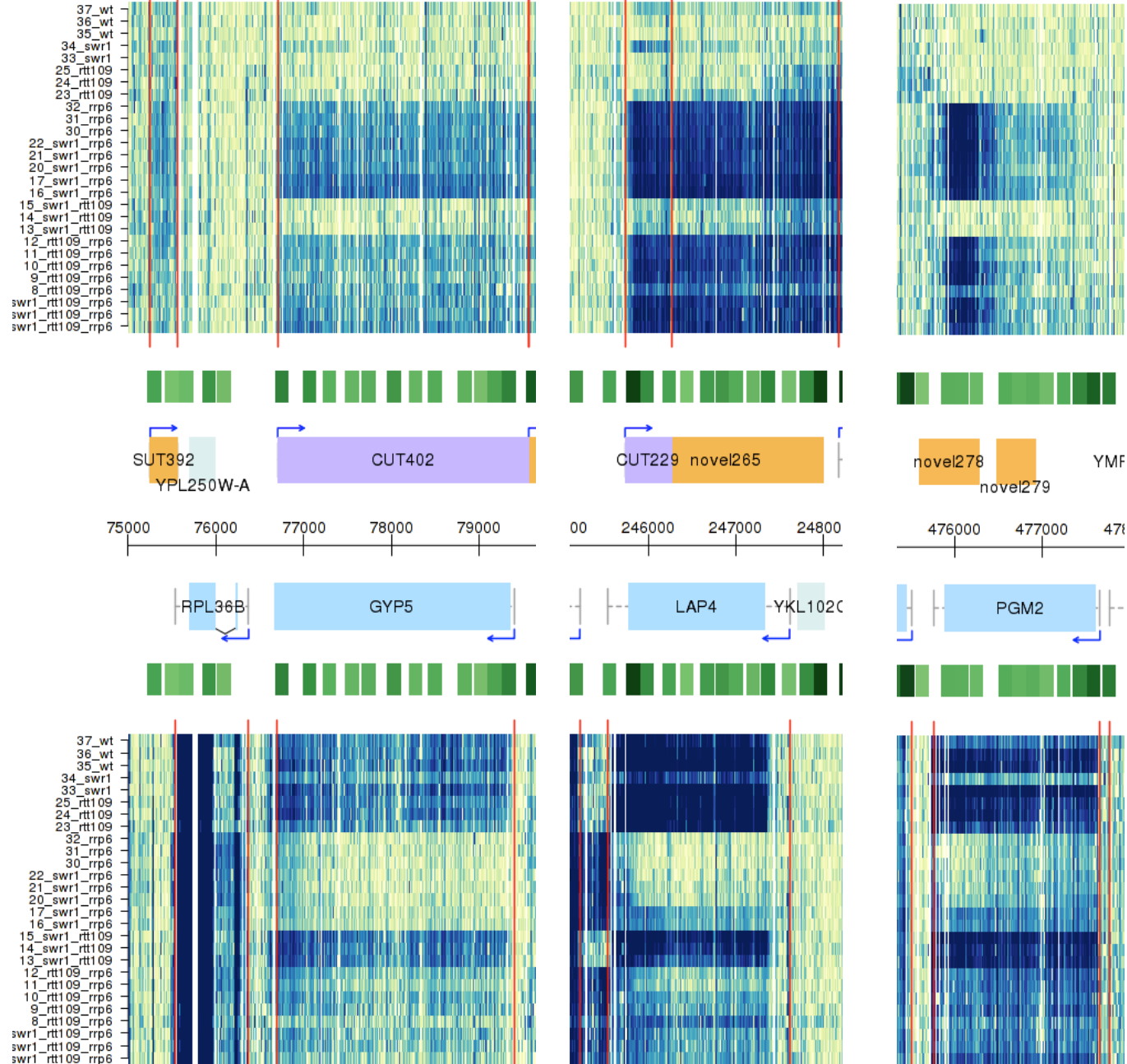
SRTs up in *swr1* $\Delta$  *rrp6* $\Delta$ 

B)

## SWR-C repressed transcripts



C)

Group B ORFs: Transcriptional interference examples in *rrp6* $\Delta$ 

**Supplemental Data S1: Tiling array screenshots of different types of transcripts observed.** A) SRTs enriched in the *swr1Δ rrp6Δ*; B) SWR-C repressed transcripts found in this study (see Figure 4) and C) Transcriptional interference examples from Group B ORFs (see Figure 2C).