

## Appendix A: Search Strategies

### PubMed

(["Prevalence"[mh] OR "Incidence"[mh] OR "Prevalence"[tiab] OR "Incidence"[tiab] OR "Risk"[ti])

AND

(Schizophrenia[mh] OR "Paranoid Disorders"[mh] OR "Psychotic Disorders"[mh] OR "Bipolar Disorder"[mh:noexp] OR "Depressive Disorder, Major"[mh] OR "Serious Mental Illness"[tiab] OR "Serious Mental Illnesses"[tiab] OR "Severe Mental Illness"[tiab] OR "Severe Mental Illnesses"[tiab] OR "Seriously Mentally Ill"[tiab] OR "Severely Mentally Ill"[tiab] OR "Serious Mental Disorder"[tiab] OR "Serious Mental Disorders"[tiab] OR "Severe Mental Disorder"[tiab] OR "Severe Mental Disorders[tiab]" OR Schizophrenia[tiab] OR "Paranoid Disorders"[tiab] OR "Psychotic Disorders"[tiab] OR "Bipolar Disorder"[tiab] OR "Depressive Disorder, Major"[tiab] OR Schizophrenias[tiab] OR "Schizophrenic Disorders"[tiab] OR "Schizophrenic Disorder"[tiab] OR "Dementia Praecox"[tiab] OR "Paranoid Disorder"[tiab] OR "Paranoid Psychoses"[tiab] OR "Psychotic Disorder"[tiab] OR "Psychosis"[tiab] OR "Psychoses"[tiab] OR "Schizoaffective Disorder"[tiab] OR "Schizoaffective Disorders"[tiab] OR "Schizophreniform Disorders"[tiab] OR "Schizophreniform Disorder"[tiab] OR "Brief Reactive Psychoses"[tiab] OR "Brief Reactive Psychosis"[tiab] OR "Bipolar Disorders"[tiab] OR "Manic-Depressive Psychosis"[tiab] OR "Manic Depressive Psychosis"[tiab] OR "Bipolar Affective Psychosis"[tiab] OR "Manic-Depressive Psychoses"[tiab] OR Mania[tiab] OR Manias[tiab] OR "Manic State"[tiab] OR "Manic States"[tiab] OR "Bipolar Depression"[tiab] OR "Manic Disorder"[tiab] OR "Manic Disorders"[tiab] OR "Major Depressive Disorders"[tiab] OR "Major Depressive Disorder"[tiab] OR "Involutional Psychoses"[tiab] OR "Involutional Psychosis"[tiab] OR "Involutional Depression"[tiab] OR "Involutional Melancholia"[tiab] OR "Major Mental Illness"[tiab] OR "Major Mental Illnesses"[tiab] OR "Major Psychiatric Disorder"[tiab] OR "Major Psychiatric Disorders"[tiab] OR "Serious Psychiatric Disorder"[tiab] OR "Serious Psychiatric Disorders"[tiab] OR "Severe Psychiatric Disorder"[tiab] OR "Severe Psychiatric Disorders"[tiab])

AND

(["Cardiovascular Diseases"[mh] OR Overweight[mh] OR Hypertension[mh] OR Hyperlipidemias[mh] OR Cholesterol[mh] OR "Diabetes Mellitus"[mh:noexp] OR "Diabetes Mellitus, Type 2"[mh] OR "Prediabetic State"[mh] OR "Blood Glucose"[mh] OR "Hemoglobin A, Glycosylated"[mh] OR Neoplasms[mh] OR HIV[mh] OR "Hepatitis B"[mh] OR "Hepatitis C"[mh] OR "Kidney Diseases"[mh] OR "Motor Activity"[mh] OR Diet[mh] OR "Nutritional Status"[mh] or Smoking[mh] OR "Sexual Behavior"[mh] OR "Pulmonary Disease, Chronic Obstructive"[mh] OR "Metabolic Syndrome X"[mh] OR "Weight Loss"[mh] OR "Body Mass Index"[mh] OR "Cardiovascular Diseases"[tiab] OR "Cardiovascular Disease"[tiab] OR "Stroke"[tiab] OR "Heart Disease"[tiab] OR "Cardiac Diseases"[tiab] OR "Vascular Disease"[tiab] OR "Overweight"[tiab] OR "Obese"[tiab] OR "Obesity"[tiab] OR "Hypertension"[tiab] OR "High Blood Pressure"[tiab] OR "High Blood Pressures"[tiab] OR hyperlipidemia[tiab] OR Hyperlipidemias[tiab] OR Hyperlipemia[tiab] OR Lipidemia[tiab] OR Lipidemias[tiab] OR Lipemia[tiab] OR Lipemias[tiab] OR "Cholesterol"[tiab] OR "Diabetes Mellitus"[tiab] OR "Diabetes Mellitus, Type 2"[tiab] OR "Prediabetic State"[tiab] OR "Ketosis-Resistant Diabetes Mellitus"[tiab] OR "Non-Insulin-Dependent Diabetes Mellitus"[tiab] OR "Type 2 Diabetes Mellitus"[tiab] OR "Slow-Onset Diabetes Mellitus"[tiab] OR "Stable Diabetes Mellitus"[tiab] OR "Maturity-Onset Diabetes Mellitus"[tiab] OR

“Maturity Onset Diabetes Mellitus”[tiab] OR “MODY”[tiab] OR “NIDDM”[tiab] OR “Adult-Onset Diabetes Mellitus”[tiab] OR “Blood Glucose”[tiab] OR “Blood Sugar”[tiab] OR “Hemoglobin”[tiab] OR Neoplasms[tiab] OR Neoplasm[tiab] OR Tumors[tiab] OR Tumor[tiab] OR Cancer[tiab] OR Cancers[tiab] OR HIV[tiab] OR “AIDS Virus”[tiab] OR “AIDS VIRUSES”[tiab] OR “HTLV-111”[tiab] OR “Human Immunodeficiency Virus”[tiab] OR “Human Immunodeficiency Viruses”[tiab] OR “Acquired Immune Deficiency Syndrome Virus”[tiab] OR “Acquired Immune Deficiency Syndrome Viruses”[tiab] OR “Hepatitis B”[tiab] OR “Hepatitis C”[tiab] OR “Kidney Diseases”[tiab] OR “Kidney Disease”[tiab] OR “Motor Activity”[tiab] OR “Motor Activities”[tiab] OR “Physical Activity”[tiab] OR “Physical Activities”[tiab] OR “Locomotor Activity”[tiab] OR “Locomotor Activities”[tiab] OR “Exercise”[tiab] OR “Exercises”[tiab] OR “Physical Exercise”[tiab] OR “Physical Exercises”[tiab] OR “Isometric Exercises”[tiab] OR “Aerobic Exercise”[tiab] OR “Aerobic Exercises”[tiab] OR Diet[tiab] OR Nutrition[tiab] OR Smoking[tiab] OR “Cigarette Smoking”[tiab] OR “Tobacco Smoking”[tiab] OR “Sexual Behavior”[tiab] OR “Sexual Activities”[tiab] OR “Sexual Activity”[tiab] OR “Sex Behavior”[tiab] OR “COPD”[tiab] OR “Chronic Obstructive Pulmonary Disease”[tiab] OR “COAD”[tiab] OR “Chronic Obstructive Airway Disease”[tiab] OR “Chronic Obstructive Lung Disease”[tiab] OR “Chronic Airflow Obstruction”[tiab] OR “Chronic Airflow Obstructions”[tiab] OR “Metabolic Syndrome”[tiab] OR “Metabolic Cardiovascular Syndrome”[tiab] OR “Weight Loss”[tiab] OR “Weight Losses”[tiab] OR “Weight Reduction”[tiab] OR “Weight Reductions”[tiab] OR “Body Mass Index”[tiab] OR “BMI”[tiab])

AND

(“United States”[mh] OR Alabama[mh] OR Alaska[mh] OR Arizona[mh] OR Arkansas[mh] OR California[mh] OR Colorado[mh] OR Connecticut[mh] OR Delaware[mh] OR Florida[mh] OR Georgia[mh] OR Hawaii[mh] OR Idaho[mh] OR Illinois[mh] OR Indiana[mh] OR Iowa[mh] OR Kansas[mh] OR Kentucky[mh] OR Louisiana[mh] OR Maine[mh] OR Maryland[mh] OR Massachusetts[mh] OR Michigan[mh] OR Minnesota[mh] OR Mississippi[mh] OR Missouri[mh] OR Montana[mh] OR Nebraska[mh] OR Nevada[mh] OR “New Hampshire”[mh] OR “New Jersey”[mh] OR “New Mexico”[mh] OR “New York”[mh] OR “North Carolina” [mh] OR “North Dakota”[mh] OR Ohio[mh] OR Oklahoma[mh] OR Oregon[mh] OR Pennsylvania[mh] OR “Rhode Island”[mh] OR “South Carolina”[mh] OR “South Dakota”[mh] OR Tennessee[mh] OR Texas[mh] OR Utah[mh] OR Vermont[mh] OR Virginia[mh] OR Washington[mh] OR “West Virginia”[mh] OR Wisconsin[mh] OR Wyoming[mh] OR Chicago[mh] OR “New York City”[mh] OR Baltimore[mh] OR Philadelphia[mh] OR Boston[mh] OR “Los Angeles”[mh] OR “San Francisco”[mh] OR “New Orleans”[mh] OR “United States” [tiab] OR “US”[tiab] OR “USA”[tiab] OR “United States of America”[tiab] OR Alabama[tiab] OR Alaska[tiab] OR Arizona[tiab] OR Arkansas[tiab] OR California[tiab] OR Colorado[tiab] OR Connecticut[tiab] OR Delaware[tiab] OR Florida[tiab] OR Georgia[tiab] OR Hawaii[tiab] OR Idaho[tiab] OR Illinois[tiab] OR Indiana[tiab] OR Iowa[tiab] OR Kansas[tiab] OR Kentucky[tiab] OR Louisiana[tiab] OR Maine[tiab] OR Maryland[tiab] OR Massachusetts[tiab] OR Michigan[tiab] OR Minnesota[tiab] OR Mississippi[tiab] OR Missouri[tiab] OR Montana[tiab] OR Nebraska[tiab] OR Nevada[tiab] OR “New Hampshire”[tiab] OR “New Jersey”[tiab] OR “New Mexico”[tiab] OR “New York”[tiab] OR “North Carolina” [tiab] OR “North Dakota”[tiab] OR Ohio[tiab] OR Oklahoma[tiab] OR Oregon[tiab] OR Pennsylvania[tiab] OR “Rhode Island”[tiab] OR “South Carolina”[tiab] OR “South Dakota”[tiab] OR Tennessee[tiab] OR Texas[tiab] OR Utah[tiab] OR Vermont[tiab] OR Virginia[tiab] OR Washington[tiab] OR “West Virginia”[tiab] OR Wisconsin[tiab] OR Wyoming[tiab] OR Chicago[tiab] OR “New York City” [ tiab] OR Baltimore[tiab] OR Philadelphia[tiab] OR Boston[tiab] OR “Los Angeles”[ tiab] OR “San Francisco”[ tiab] OR “New Orleans”[tiab] OR “United States” OR “US” OR “USA” OR “United States of America” OR Alabama OR Alaska OR Arizona OR Arkansas OR California OR Colorado OR Connecticut OR Delaware OR Florida OR Georgia OR Hawaii OR Idaho OR Illinois OR Indiana OR Iowa OR Kansas OR Kentucky OR Louisiana OR Maine OR Maryland OR

Massachusetts OR Michigan OR Minnesota OR Mississippi OR Missouri OR Montana OR Nebraska OR Nevada OR "New Hampshire" OR "New Jersey"[ OR "New Mexico" OR "New York" OR "North Carolina" OR "North Dakota" OR Ohio OR Oklahoma OR Oregon OR Pennsylvania OR "Rhode Island" OR "South Carolina" OR "South Dakota" OR Tennessee OR Texas OR Utah OR Vermont OR Virginia OR Washington OR "West Virginia" OR Wisconsin OR Wyoming)

AND

("2000"[dp]: "3000"[dp]))

### **PsycInfo**

(TI "Prevalence" OR TI "Incidence" OR AB "Prevalence" OR AB "Incidence" OR TI "Risk")

AND

(DE "Schizophrenia" OR DE "Acute Schizophrenia" OR DE "Catatonic Schizophrenia" OR DE "Paranoid Schizophrenia" OR DE "Process Schizophrenia" OR DE "Schizophrenia (Disorganized Type)" OR DE "Schizophreniform Disorder" OR DE "Schizoaffective Disorder" OR DE "Undifferentiated Schizophrenia" OR DE "Psychosis" OR DE "Bipolar Disorder" OR DE "Major Depression" OR DE "Neuroleptic Drugs" OR TI "Serious Mental Illness" OR TI "Serious Mental Illnesses" OR TI "Severe Mental Illness" OR TI "Severe Mental Illnesses" OR TI "Seriously Mentally Ill" OR TI "Severely Mentally Ill" OR TI "Serious Mental Disorder" OR TI "Serious Mental Disorders" OR TI "Severe Mental Disorder" OR TI "Severe Mental Disorders" OR TI "Schizophrenia" OR TI "Paranoid Disorders" OR TI "Psychotic Disorders" OR TI "Bipolar Disorder" OR TI "Major Depressive Disorder" OR TI "Schizophrenias" OR TI "Schizophrenic Disorders" OR TI "Schizophrenic Disorder" OR TI "Dementia Praecox" OR TI "Paranoid Disorder" OR TI "Paranoid Psychoses" OR TI "Psychotic Disorder" OR TI "Psychosis" OR TI "Psychoses" OR TI "Schizoaffective Disorder" OR TI "Schizoaffective Disorders" OR TI "Schizophreniform Disorders" OR TI "Schizophreniform Disorder" OR TI "Brief Reactive Psychoses" OR TI "Brief Reactive Psychosis" OR TI "Bipolar Disorders" OR TI "Manic-Depressive Psychosis" OR TI "Manic Depressive Psychosis" OR TI "Bipolar Affective Psychosis" OR TI "Manic-Depressive Psychoses" OR TI "Mania" OR TI "Manias" OR TI "Manic State" OR TI "Manic States" OR TI "Bipolar Depression" OR TI "Manic Disorder" OR TI "Manic Disorders" OR TI "Major Depressive Disorders" OR TI "Major Depressive Disorder" OR TI "Involutional Psychoses" OR TI "Involutional Psychosis" OR TI "Involutional Depression" OR TI "Involutional Melancholia" OR TI "Antipsychotic" OR TI "Antipsychotics" OR TI "Major Mental Illness" OR TI "Major Mental Illnesses" OR TI "Major Psychiatric Disorder" OR TI "Major Psychiatric Disorders" OR TI "Serious Psychiatric Disorder" OR TI "Serious Psychiatric Disorders" OR TI "Severe Psychiatric Disorder" OR TI "Severe Psychiatric Disorders")  
 OR AB "Serious Mental Illness" OR AB "Serious Mental Illnesses" OR AB "Severe Mental Illness" OR AB "Severe Mental Illnesses" OR AB "Seriously Mentally Ill" OR AB "Severely Mentally Ill" OR AB "Serious Mental Disorder" OR AB "Serious Mental Disorders" OR AB "Severe Mental Disorder" OR AB "Severe Mental Disorders" OR AB "Schizophrenia" OR AB "Paranoid Disorders" OR AB "Psychotic Disorders" OR AB "Bipolar Disorder" OR AB "Major Depressive Disorder" OR AB "Schizophrenias" OR AB "Schizophrenic Disorders" OR AB "Schizophrenic

Disorder" OR AB "Dementia Praecox" OR AB "Paranoid Disorder" OR AB "Paranoid Psychoses" OR AB "Psychotic Disorder" OR AB "Psychosis" OR AB "Psychoses" OR AB "Schizoaffective Disorder" OR AB "Schizoaffective Disorders" OR AB "Schizophreniform Disorders" OR AB "Schizophreniform Disorder" OR AB "Brief Reactive Psychoses" OR AB "Brief Reactive Psychosis" OR AB "Bipolar Disorders" OR AB "Manic-Depressive Psychosis" OR AB "Manic Depressive Psychosis" OR AB "Bipolar Affective Psychosis" OR AB "Manic-Depressive Psychoses" OR AB "Mania" OR AB "Manias" OR AB "Manic State" OR AB "Manic States" OR AB "Bipolar Depression" OR AB "Manic Disorder" OR AB "Manic Disorders" OR AB "Major Depressive Disorders" OR AB "Major Depressive Disorder" OR AB "Involutional Psychoses" OR AB "Involutional Psychosis" OR AB "Involutional Depression" OR AB "Involutional Melancholia" OR AB "Antipsychotic" OR AB "Antipsychotics" OR AB "Major Mental Illness" OR AB "Major Mental Illnesses" OR AB "Major Psychiatric Disorder" OR AB "Major Psychiatric Disorders" OR AB "Serious Psychiatric Disorder" OR AB "Serious Psychiatric Disorders" OR AB "Severe Psychiatric Disorder" OR AB "Severe Psychiatric Disorders")

AND

(DE "Cardiovascular Disorders" OR DE "Cerebrovascular Disorders" OR DE "Overweight" OR DE "Obesity" OR DE "Body Mass Index" OR DE "Weight Loss" OR DE "Weight Gain" OR DE "Weight Control" OR DE "Hypertension" OR DE "Cholesterol" OR DE "Lipids" OR DE "Diabetes Mellitus" OR DE "Blood Sugar" OR DE "Hemoglobin" OR DE "Neoplasms" OR DE "Hepatitis" OR DE "Kidney Diseases" OR DE "Physical Activity" OR DE "Exercise" OR DE "Diets" OR DE "Eating Behavior" OR DE "Nutrition" OR DE "Tobacco Smoking" OR DE "Smoking Cessation" OR DE "Psychosexual Behavior" OR DE "Chronic Obstructive Pulmonary Disease" OR DE "Metabolic Syndrome" OR DE "HIV" OR TI "Cardiovascular Diseases" OR TI "Cardiovascular Disease" OR TI "Stroke" OR TI "Heart Disease" OR TI "Cardiac Diseases" OR TI "Vascular Disease" OR TI "Overweight" OR TI "Obese" OR TI "Obesity" OR TI "Hypertension" OR TI "High Blood Pressure" OR TI "High Blood Pressures" OR TI "Hyperlipidemia" OR TI "Hyperlipidemias" OR TI "Hyperlipemia" OR TI "Lipidemia" OR TI "Lipidemias" OR TI "Lipemia" OR TI "Lipemias" OR TI "Cholesterol" OR TI "Diabetes Mellitus" OR TI "Diabetes Mellitus, Type 2" OR TI "Prediabetic State" OR TI "Ketosis-Resistant Diabetes Mellitus" OR TI "Non-Insulin-Dependent Diabetes Mellitus" OR TI "Type 2 Diabetes Mellitus" OR TI "Slow-Onset Diabetes Mellitus" OR TI "Stable Diabetes Mellitus" OR TI "Maturity-Onset Diabetes Mellitus" OR TI "Maturity Onset Diabetes Mellitus" OR TI "MODY" OR TI "NIDDM" OR TI "Adult-Onset Diabetes Mellitus" OR TI "Blood Glucose" OR TI "Blood Sugar" OR TI "Hemoglobin" OR TI "Neoplasms" OR TI "Neoplasm" OR TI "Tumors" OR TI "Tumor" OR TI "Cancer" OR TI "Cancers" OR TI "HIV" OR TI "AIDS Virus" OR TI "AIDS VIRUSES" OR TI "HTLV-111" OR TI "Human Immunodeficiency Virus" OR TI "Human Immunodeficiency Viruses" OR TI "Acquired Immune Deficiency Syndrome Virus" OR TI "Acquired Immune Deficiency Syndrome Viruses" OR TI "Hepatitis B" OR TI "Hepatitis C" OR TI "Kidney Diseases" OR TI "Kidney Disease" OR TI "Motor Activity" OR TI "Motor Activities" OR TI "Physical Activity" OR TI "Physical Activities" OR TI "Locomotor Activity" OR TI "Locomotor Activities" OR TI "Exercise" OR TI "Exercises" OR TI "Physical Exercise" OR TI "Physical Exercises" OR TI "Isometric Exercises" OR TI "Aerobic Exercise" OR TI "Aerobic Exercises" OR TI "Diet" OR TI "Nutrition" OR TI "Smoking" OR TI "Cigarette Smoking" OR TI "Tobacco Smoking" OR TI "Sexual Behavior" OR TI "Sexual Activities" OR TI "Sexual Activity" OR TI "Sex Behavior" OR TI "COPD" OR TI "Chronic Obstructive Pulmonary Disease" OR TI "COAD" OR TI "Chronic Obstructive Airway Disease" OR TI "Chronic Obstructive Lung Disease" OR TI "Chronic Airflow Obstruction" OR TI "Chronic Airflow Obstructions" OR TI "Metabolic Syndrome" OR TI "Metabolic Cardiovascular Syndrome" OR TI "Weight Loss" OR TI "Weight Losses" OR TI "Weight Reduction" OR TI "Weight Reductions" OR

TI "Body Mass Index" OR TI "BMI" OR AB "Cardiovascular Diseases" OR AB "Cardiovascular Disease" OR AB "Stroke" OR AB "Heart Disease" OR AB "Cardiac Diseases" OR AB "Vascular Disease" OR AB "Overweight" OR AB "Obese" OR AB "Obesity" OR AB "Hypertension" OR AB "High Blood Pressure" OR AB "High Blood Pressures" OR AB "Hyperlipidemia" OR AB "Hyperlipidemias" OR AB "Hyperlipemia" OR AB "Lipidemia" OR AB "Lipidemias" OR AB "Lipemia" OR AB "Lipemias" OR AB "Cholesterol" OR AB "Diabetes Mellitus" OR AB "Diabetes Mellitus, Type 2" OR AB "Prediabetic State" OR AB "Ketosis-Resistant Diabetes Mellitus" OR AB "Non-Insulin-Dependent Diabetes Mellitus" OR AB "Type 2 Diabetes Mellitus" OR AB "Slow-Onset Diabetes Mellitus" OR AB "Stable Diabetes Mellitus" OR AB "Maturity-Onset Diabetes Mellitus" OR AB "Maturity Onset Diabetes Mellitus" OR AB "MODY" OR AB "NIDDM" OR AB "Adult-Onset Diabetes Mellitus" OR AB "Blood Glucose" OR AB "Blood Sugar" OR AB "Hemoglobin" OR AB "Neoplasms" OR AB "Neoplasm" OR AB "Tumors" OR AB "Tumor" OR AB "Cancer" OR AB "Cancers" OR AB "HIV" OR AB "AIDS Virus" OR AB "AIDS VIRUSES" OR AB "HTLV-111" OR AB "Human Immunodeficiency Virus" OR AB "Human Immunodeficiency Viruses" OR AB "Acquired Immune Deficiency Syndrome Virus" OR AB "Acquired Immune Deficiency Syndrome Viruses" OR AB "Hepatitis B" OR AB "Hepatitis C" OR AB "Kidney Diseases" OR AB "Kidney Disease" OR AB "Motor Activity" OR AB "Motor Activities" OR AB "Physical Activity" OR AB "Physical Activities" OR AB "Locomotor Activity" OR AB "Locomotor Activities" OR AB "Exercise" OR AB "Exercises" OR AB "Physical Exercise" OR AB "Physical Exercises" OR AB "Isometric Exercises" OR AB "Aerobic Exercise" OR AB "Aerobic Exercises" OR AB "Diet" OR AB "Nutrition" OR AB "Smoking" OR AB "Cigarette Smoking" OR AB "Tobacco Smoking" OR AB "Sexual Behavior" OR AB "Sexual Activities" OR AB "Sexual Activity" OR AB "Sex Behavior" OR AB "COPD" OR AB "Chronic Obstructive Pulmonary Disease" OR AB "COAD" OR AB "Chronic Obstructive Airway Disease" OR AB "Chronic Obstructive Lung Disease" OR AB "Chronic Airflow Obstruction" OR AB "Chronic Airflow Obstructions" OR AB "Metabolic Syndrome" OR AB "Metabolic Cardiovascular Syndrome" OR AB "Weight Loss" OR AB "Weight Losses" OR AB "Weight Reduction" OR AB "Weight Reductions" OR AB "Body Mass Index" OR AB "BMI")

AND

[Point and click 'PL' population location

("United States" OR "US" OR "USA" OR "United States of America" OR Alabama OR Alaska OR Arizona OR Arkansas OR California OR Colorado OR Connecticut OR Delaware OR Florida OR Georgia OR Hawaii OR Idaho OR Illinois OR Indiana OR Iowa OR Kansas OR Kentucky OR Louisiana OR Maine OR Maryland OR Massachusetts OR Michigan OR Minnesota OR Mississippi OR Missouri OR Montana OR Nebraska OR Nevada OR "New Hampshire" OR "New Jersey" OR "New Mexico" OR "New York" OR "North Carolina" OR "North Dakota" OR Ohio OR Oklahoma OR Oregon OR Pennsylvania OR "Rhode Island" OR "South Carolina" OR "South Dakota" OR Tennessee OR Texas OR Utah OR Vermont OR Virginia OR Washington OR "West Virginia" OR Wisconsin OR Wyoming)

## SCOPUS

(TITLE-ABS-KEY ("Prevalence" OR "Incidence" OR "Risk")

AND

TITLE-ABS-KEY ("Schizophrenia" OR "Acute Schizophrenia" OR "Catatonic Schizophrenia" OR "Paranoid Schizophrenia" OR "Process Schizophrenia" OR "Schizophreniform Disorder" OR "Schizoaffective Disorder" OR "Undifferentiated Schizophrenia" OR "Psychosis" OR "Bipolar Disorder" OR "Major Depression" OR "Neuroleptic Drugs" OR "Serious Mental Illness" OR "Serious Mental Illnesses" OR "Severe Mental Illness" OR "Severe Mental Illnesses" OR "Seriously Mentally Ill" OR "Severely Mentally Ill" OR "Serious Mental Disorder" OR "Serious Mental Disorders" OR "Severe Mental Disorder" OR "Severe Mental Disorders" OR "Paranoid Disorders" OR "Psychotic Disorders" OR "Bipolar Disorder" OR "Major Depressive Disorder" OR "Schizophrenias" OR "Schizophrenic Disorders" OR "Schizophrenic Disorder" OR "Dementia Praecox" OR "Paranoid Disorder" OR "Paranoid Psychoses" OR "Psychotic Disorder" OR "Psychosis" OR "Psychoses" OR "Schizoaffective Disorder" OR "Schizoaffective Disorders" OR "Schizophreniform Disorders" OR "Schizophreniform Disorder" OR "Brief Reactive Psychoses" OR "Brief Reactive Psychosis" OR "Bipolar Disorders" OR "Manic-Depressive Psychosis" OR "Manic Depressive Psychosis" OR "Bipolar Affective Psychosis" OR "Manic-Depressive Psychoses" OR "Mania" OR "Manias" OR "Manic State" OR "Manic States" OR "Bipolar Depression" OR "Manic Disorder" OR "Manic Disorders" OR "Major Depressive Disorders" OR "Major Depressive Disorder" OR "Involutional Psychoses" OR "Involutional Psychosis" OR "Involutional Depression" OR "Involutional Melancholia" OR "Antipsychotic" OR "Antipsychotics" OR "Major Mental Illness" OR "Major Mental Illnesses" OR "Major Psychiatric Disorder" OR "Major Psychiatric Disorders" OR "Serious Psychiatric Disorder" OR "Serious Psychiatric Disorders" OR "Severe Psychiatric Disorder" OR "Severe Psychiatric Disorders")

AND

TITLE-ABS-KEY ("Cardiovascular Disorders" OR "Cerebrovascular Disorders" OR "Overweight" OR "Obesity" OR "Body Mass Index" OR "Weight Loss" OR "Weight Gain" OR "Weight Control" OR "Hypertension" OR "Cholesterol" OR "Lipids" OR "Diabetes Mellitus" OR "Blood Sugar" OR "Hemoglobin" OR "Neoplasms" OR "Hepatitis" OR "Kidney Diseases" OR "Physical Activity" OR "Exercise" OR "Diets" OR "Eating Behavior" OR "Nutrition" OR "Tobacco Smoking" OR "Smoking Cessation" OR "Psychosexual Behavior" OR "Chronic Obstructive Pulmonary Disease" OR "Metabolic Syndrome" OR "Cardiovascular Diseases" OR "Cardiovascular Disease" OR "Stroke" OR "Heart Disease" OR "Cardiac Diseases" OR "Vascular Disease" OR "Overweight" OR "Obese" OR "Obesity" OR "Hypertension" OR "High Blood Pressure" OR "High Blood Pressures" OR "Hyperlipidemia" OR "Hyperlipidemias" OR "Hyperlipemia" OR "Lipidemia" OR "Lipidemias" OR "Lipemia" OR "Lipemias" OR "Cholesterol" OR "Diabetes Mellitus" OR "Diabetes Mellitus, Type 2" OR "Prediabetic State" OR "Ketosis-Resistant Diabetes Mellitus" OR "Non-Insulin-Dependent Diabetes Mellitus" OR "Type 2 Diabetes Mellitus" OR "Slow-Onset Diabetes Mellitus" OR "Stable Diabetes Mellitus" OR "Maturity-Onset Diabetes Mellitus" OR "Maturity Onset Diabetes Mellitus" OR "MODY" OR "NIDDM" OR "Adult-Onset Diabetes Mellitus" OR "Blood Glucose" OR "Blood Sugar" OR "Hemoglobin" OR "Neoplasms" OR "Neoplasm" OR "Tumors" OR "Tumor" OR "Cancer" OR "Cancers" OR "HIV" OR "AIDS Virus" OR "AIDS VIRUSES" OR "HTLV-111" OR "Human Immunodeficiency Virus" OR "Human Immunodeficiency Viruses" OR "Acquired Immune Deficiency Syndrome Virus" OR "Acquired Immune Deficiency Syndrome Viruses" OR "Hepatitis B" OR "Hepatitis C" OR "Kidney Diseases" OR "Kidney Disease" OR "Motor Activity" OR "Motor Activities" OR "Physical Activity" OR "Physical Activities" OR "Locomotor Activity" OR "Locomotor Activities" OR "Exercise" OR "Exercises" OR "Physical Exercise" OR "Physical Exercises" OR "Isometric Exercises" OR "Aerobic Exercise" OR "Aerobic Exercises" OR "Diet" OR "Nutrition" OR "Smoking" OR "Cigarette Smoking" OR "Tobacco Smoking" OR "Sexual Behavior" OR "Sexual Activities" OR "Sexual Activity" OR "Sex Behavior" OR "COPD" OR "Chronic Obstructive Pulmonary Disease" OR "COAD" OR "Chronic Obstructive Airway Disease" OR "Chronic Obstructive Lung Disease" OR "Chronic Airflow

Obstruction" OR "Chronic Airflow Obstructions" OR "Metabolic Syndrome" OR "Metabolic Cardiovascular Syndrome" OR "Weight Loss" OR "Weight Losses" OR "Weight Reduction" OR "Weight Reductions" OR "Body Mass Index" OR "BMI")

AND

TITLE-ABS-KEY ("United States" OR "US" OR "USA" OR "United States of America" OR Alabama OR Alaska OR Arizona OR Arkansas OR California OR Colorado OR Connecticut OR Delaware OR Florida OR Georgia OR Hawaii OR Idaho OR Illinois OR Indiana OR Iowa OR Kansas OR Kentucky OR Louisiana OR Maine OR Maryland OR Massachusetts OR Michigan OR Minnesota OR Mississippi OR Missouri OR Montana OR Nebraska OR Nevada OR "New Hampshire" OR "New Jersey" OR "New Mexico" OR "New York" OR "North Carolina" OR "North Dakota" OR Ohio OR Oklahoma OR Oregon OR Pennsylvania OR "Rhode Island" OR "South Carolina" OR "South Dakota" OR Tennessee OR Texas OR Utah OR Vermont OR Virginia OR Washington OR "West Virginia" OR Wisconsin OR Wyoming)

#### **EMBASE**

((('prevalence':ti,ab OR 'incidence':ti,ab OR 'risk':ti,ab ) AND ('Serious Mental Illness':ti,ab OR 'Serious Mental Illnesses':ti,ab OR 'Severe Mental Illness':ti,ab OR 'Severe Mental Illnesses':ti,ab OR 'Seriously Mentally Ill':ti,ab OR 'Severely Mentally Ill':ti,ab OR 'Serious Mental Disorder':ti,ab OR 'Serious Mental Disorders':ti,ab OR 'Severe Mental Disorder':ti,ab OR 'Severe Mental Disorders':ti,ab OR 'Schizophrenia':ti,ab OR 'Paranoid Disorders':ti,ab OR 'Psychotic Disorders':ti,ab OR 'Bipolar Disorder':ti,ab OR 'Major Depressive Disorder':ti,ab OR 'Schizophrenias':ti,ab OR 'Schizophrenic Disorders':ti,ab OR 'Schizophrenic Disorder':ti,ab OR 'Dementia Praecox':ti,ab OR 'Paranoid Disorder':ti,ab OR 'Paranoid Psychoses':ti,ab OR 'Psychotic Disorder':ti,ab OR 'Psychosis':ti,ab OR 'Psychoses':ti,ab OR 'Schizoaffective Disorder':ti,ab OR 'Schizoaffective Disorders':ti,ab OR 'Schizophreniform Disorders':ti,ab OR 'Schizophreniform Disorder':ti,ab OR 'Brief Reactive Psychoses':ti,ab OR 'Brief Reactive Psychosis':ti,ab OR 'Bipolar Disorders':ti,ab OR 'Manic-Depressive Psychosis':ti,ab OR 'Manic Depressive Psychosis':ti,ab OR 'Bipolar Affective Psychosis':ti,ab OR 'Manic-Depressive Psychoses':ti,ab OR 'Mania':ti,ab OR 'Manias':ti,ab OR 'Manic State':ti,ab OR 'Manic States':ti,ab OR 'Bipolar Depression':ti,ab OR 'Manic Disorder':ti,ab OR 'Manic Disorders':ti,ab OR 'Major Depressive Disorders':ti,ab OR 'Major Depressive Disorder':ti,ab OR 'Involutional Psychoses':ti,ab OR 'Involutional Psychosis':ti,ab OR 'Involutional Depression':ti,ab OR 'Involutional Melancholia':ti,ab OR 'Antipsychotic':ti,ab OR 'Antipsychotics':ti,ab OR 'Major Mental Illness':ti,ab OR 'Major Mental Illnesses':ti,ab OR 'Major Psychiatric Disorder':ti,ab OR 'Major Psychiatric Disorders':ti,ab OR 'Serious Psychiatric Disorder':ti,ab OR 'Serious Psychiatric Disorders':ti,ab OR 'Severe Psychiatric Disorder':ti,ab OR 'Severe Psychiatric Disorders':ti,ab) AND ('heart disease'/de OR 'cerebrovascular disease'/de OR 'obesity'/de OR 'body mass'/de OR 'weight reduction'/de OR 'weight gain'/de OR 'weight control'/de OR 'hypertension'/de OR 'hyperlipidemia'/de OR 'diabetes mellitus'/de OR 'neoplasm'/de OR 'hepatitis B'/de OR 'hepatitis C'/de OR 'kidney disease'/de OR 'exercise'/de OR 'diet'/de OR 'nutrition'/de OR 'eating habit'/de OR 'smoking'/de OR 'smoking cessation'/de OR 'sexual behavior'/de OR 'chronic obstructive lung disease'/de OR 'metabolic syndrome X'/de OR 'human immunodeficiency virus'/de OR 'Cardiovascular Diseases':ti,ab OR 'Cardiovascular Disease':ti,ab OR 'Stroke':ti,ab OR 'Heart Disease':ti,ab OR 'Cardiac Diseases':ti,ab OR 'Vascular Disease':ti,ab OR 'Overweight':ti,ab OR 'Obese':ti,ab OR 'Obesity':ti,ab OR 'Hypertension':ti,ab OR 'High Blood Pressure':ti,ab OR 'High Blood Pressures':ti,ab OR 'Hyperlipidemia':ti,ab OR 'Hyperlipidemias':ti,ab OR

'Hyperlipemia':ti,ab OR 'Lipidemia':ti,ab OR 'Lipidemias':ti,ab OR 'Lipemia':ti,ab OR 'Lipemias':ti,ab OR 'Cholesterol':ti,ab OR 'Diabetes Mellitus':ti,ab OR 'Diabetes Mellitus, Type 2':ti,ab OR 'Prediabetic State':ti,ab OR 'Ketosis-Resistant Diabetes Mellitus':ti,ab OR 'Non-Insulin-Dependent Diabetes Mellitus':ti,ab OR 'Type 2 Diabetes Mellitus':ti,ab OR 'Slow-Onset Diabetes Mellitus':ti,ab OR 'Stable Diabetes Mellitus':ti,ab OR 'Maturity-Onset Diabetes Mellitus':ti,ab OR 'Maturity Onset Diabetes Mellitus':ti,ab OR 'MODY':ti,ab OR 'NIDDM':ti,ab OR 'Adult-Onset Diabetes Mellitus':ti,ab OR 'Blood Glucose':ti,ab OR 'Blood Sugar':ti,ab OR 'Hemoglobin':ti,ab OR 'Neoplasms':ti,ab OR 'Neoplasm':ti,ab OR 'Tumors':ti,ab OR 'Tumor':ti,ab OR 'Cancer':ti,ab OR 'Cancers':ti,ab OR 'HIV':ti,ab OR 'AIDS Virus':ti,ab OR 'AIDS VIRUSES':ti,ab OR 'HTLV-111':ti,ab OR 'Human Immunodeficiency Virus':ti,ab OR 'Human Immunodeficiency Viruses':ti,ab OR 'Acquired Immune Deficiency Syndrome Virus':ti,ab OR 'Acquired Immune Deficiency Syndrome Viruses':ti,ab OR 'Hepatitis B':ti,ab OR 'Hepatitis C':ti,ab OR 'Kidney Diseases':ti,ab OR 'Kidney Disease':ti,ab OR 'Motor Activity':ti,ab OR 'Motor Activities':ti,ab OR 'Physical Activity':ti,ab OR 'Physical Activities':ti,ab OR 'Locomotor Activity':ti,ab OR 'Locomotor Activities':ti,ab OR 'Exercise':ti,ab OR 'Exercises':ti,ab OR 'Physical Exercise':ti,ab OR 'Physical Exercises':ti,ab OR 'Isometric Exercises':ti,ab OR 'Aerobic Exercise':ti,ab OR 'Aerobic Exercises':ti,ab OR 'Diet':ti,ab OR 'Nutrition':ti,ab OR 'Smoking':ti,ab OR 'Cigarette Smoking':ti,ab OR 'Tobacco Smoking':ti,ab OR 'Sexual Behavior':ti,ab OR 'Sexual Activities':ti,ab OR 'Sexual Activity':ti,ab OR 'Sex Behavior':ti,ab OR 'COPD':ti,ab OR 'Chronic Obstructive Pulmonary Disease':ti,ab OR 'COAD':ti,ab OR 'Chronic Obstructive Airway Disease':ti,ab OR 'Chronic Obstructive Lung Disease':ti,ab OR 'Chronic Airflow Obstruction':ti,ab OR 'Chronic Airflow Obstructions':ti,ab OR 'Metabolic Syndrome':ti,ab OR 'Metabolic Cardiovascular Syndrome':ti,ab OR 'Weight Loss':ti,ab OR 'Weight Losses':ti,ab OR 'Weight Reduction':ti,ab OR 'Weight Reductions':ti,ab OR 'Body Mass Index':ti,ab OR 'BMI':ti,ab) AND ('United States':ti,ab OR 'US' OR 'USA' OR 'United States of America' OR Alabama OR Alaska OR Arizona OR Arkansas OR 'California':ti,ab OR 'Colorado':ti,ab OR 'Connecticut':ti,ab OR 'Delaware':ti,ab OR 'Florida':ti,ab OR 'Georgia':ti,ab OR 'Hawaii':ti,ab OR 'Idaho':ti,ab OR 'Illinois':ti,ab OR 'Indiana':ti,ab OR 'Iowa':ti,ab OR 'Kansas':ti,ab OR 'Kentucky':ti,ab OR 'Louisiana':ti,ab OR 'Maine':ti,ab OR 'Maryland':ti,ab OR 'Massachusetts':ti,ab OR 'Michigan':ti,ab OR 'Minnesota':ti,ab OR 'Mississippi':ti,ab OR 'Missouri':ti,ab OR 'Montana':ti,ab OR 'Nebraska':ti,ab OR 'Nevada':ti,ab OR 'New Hampshire':ti,ab OR 'New Jersey':ti,ab OR 'New Mexico':ti,ab OR 'New York':ti,ab OR 'North Carolina':ti,ab OR 'North Dakota':ti,ab OR 'Ohio':ti,ab OR 'Oklahoma':ti,ab OR 'Oregon':ti,ab OR 'Pennsylvania':ti,ab OR 'Rhode Island':ti,ab OR 'South Carolina':ti,ab OR 'South Dakota':ti,ab OR 'Tennessee':ti,ab OR 'Texas':ti,ab OR 'Utah':ti,ab OR 'Vermont':ti,ab OR 'Virginia':ti,ab OR 'Washington':ti,ab OR 'West Virginia':ti,ab OR 'Wisconsin':ti,ab OR 'Wyoming':ti,ab))

### **Web of Science**

((“Prevalence” OR “Incidence” OR “Risk”)

AND

(“Schizophrenia” OR “Acute Schizophrenia” OR “Catatonic Schizophrenia” OR “Paranoid Schizophrenia” OR “Process Schizophrenia” OR “Schizophreniform Disorder” OR “Schizoaffective Disorder” OR “Undifferentiated Schizophrenia” OR “Psychosis” OR “Bipolar Disorder” OR “Major Depression” OR “Neuroleptic Drugs” OR “Serious Mental Illness” OR “Serious Mental Illnesses” OR “Severe Mental Illness” OR “Severe Mental Illnesses” OR “Seriously Mentally Ill” OR “Severely Mentally Ill” OR “Serious Mental Disorder” OR “Serious Mental Disorders” OR “Severe Mental Disorder” OR “Severe Mental Disorders” OR “Paranoid Disorders” OR “Psychotic Disorders” OR “Bipolar Disorder” OR “Major



Depressive Disorder" OR "Schizophrenias" OR "Schizophrenic Disorders" OR "Schizophrenic Disorder" OR "Dementia Praecox" OR "Paranoid Disorder" OR "Paranoid Psychoses" OR "Psychotic Disorder" OR "Psychosis" OR "Psychoses" OR "Schizoaffective Disorder" OR "Schizoaffective Disorders" OR "Schizophreniform Disorders" OR "Schizophreniform Disorder" OR "Brief Reactive Psychoses" OR "Brief Reactive Psychosis" OR "Bipolar Disorders" OR "Manic-Depressive Psychosis" OR "Manic Depressive Psychosis" OR "Bipolar Affective Psychosis" OR "Manic-Depressive Psychoses" OR "Mania" OR "Manias" OR "Manic State" OR "Manic States" OR "Bipolar Depression" OR "Manic Disorder" OR "Manic Disorders" OR "Major Depressive Disorders" OR "Major Depressive Disorder" OR "Involutional Psychoses" OR "Involutional Psychosis" OR "Involutional Depression" OR "Involutional Melancholia" OR "Antipsychotic" OR "Antipsychotics" OR "Major Mental Illness" OR "Major Mental Illnesses" OR "Major Psychiatric Disorder" OR "Major Psychiatric Disorders" OR "Serious Psychiatric Disorder" OR "Serious Psychiatric Disorders" OR "Severe Psychiatric Disorder" OR "Severe Psychiatric Disorders")

AND

("Cardiovascular Disorders" OR "Cerebrovascular Disorders" OR "Overweight" OR "Obesity" OR "Body Mass Index" OR "Weight Loss" OR "Weight Gain" OR "Weight Control" OR "Hypertension" OR "Cholesterol" OR "Lipids" OR "Diabetes Mellitus" OR "Blood Sugar" OR "Hemoglobin" OR "Neoplasms" OR "Hepatitis" OR "Kidney Diseases" OR "Physical Activity" OR "Exercise" OR "Diets" OR "Eating Behavior" OR "Nutrition" OR "Tobacco Smoking" OR "Smoking Cessation" OR "Psychosexual Behavior" OR "Chronic Obstructive Pulmonary Disease" OR "Metabolic Syndrome" OR "Cardiovascular Diseases" OR "Cardiovascular Disease" OR "Stroke" OR "Heart Disease" OR "Cardiac Diseases" OR "Vascular Disease" OR "Overweight" OR "Obese" OR "Obesity" OR "Hypertension" OR "High Blood Pressure" OR "High Blood Pressures" OR "Hyperlipidemia" OR "Hyperlipidemias" OR "Hyperlipemia" OR "Lipidemia" OR "Lipidemias" OR "Lipemia" OR "Lipemias" OR "Cholesterol" OR "Diabetes Mellitus" OR "Diabetes Mellitus, Type 2" OR "Prediabetic State" OR "Ketosis-Resistant Diabetes Mellitus" OR "Non-Insulin-Dependent Diabetes Mellitus" OR "Type 2 Diabetes Mellitus" OR "Slow-Onset Diabetes Mellitus" OR "Stable Diabetes Mellitus" OR "Maturity-Onset Diabetes Mellitus" OR "Maturity Onset Diabetes Mellitus" OR "MODY" OR "NIDDM" OR "Adult-Onset Diabetes Mellitus" OR "Blood Glucose" OR "Blood Sugar" OR "Hemoglobin" OR "Neoplasms" OR "Neoplasm" OR "Tumors" OR "Tumor" OR "Cancer" OR "Cancers" OR "HIV" OR "AIDS Virus" OR "AIDS VIRUSES" OR "HTLV-111" OR "Human Immunodeficiency Virus" OR "Human Immunodeficiency Viruses" OR "Acquired Immune Deficiency Syndrome Virus" OR "Acquired Immune Deficiency Syndrome Viruses" OR "Hepatitis B" OR "Hepatitis C" OR "Kidney Diseases" OR "Kidney Disease" OR "Motor Activity" OR "Motor Activities" OR "Physical Activity" OR "Physical Activities" OR "Locomotor Activity" OR "Locomotor Activities" OR "Exercise" OR "Exercises" OR "Physical Exercise" OR "Physical Exercises" OR "Isometric Exercises" OR "Aerobic Exercise" OR "Aerobic Exercises" OR "Diet" OR "Nutrition" OR "Smoking" OR "Cigarette Smoking" OR "Tobacco Smoking" OR "Sexual Behavior" OR "Sexual Activities" OR "Sexual Activity" OR "Sex Behavior" OR "COPD" OR "Chronic Obstructive Pulmonary Disease" OR "COAD" OR "Chronic Obstructive Airway Disease" OR "Chronic Obstructive Lung Disease" OR "Chronic Airflow Obstruction" OR "Chronic Airflow Obstructions" OR "Metabolic Syndrome" OR "Metabolic Cardiovascular Syndrome" OR "Weight Loss" OR "Weight Losses" OR "Weight Reduction" OR "Weight Reductions" OR "Body Mass Index" OR "BMI")

AND

("United States" OR "US" OR "USA" OR "United States of America" OR Alabama OR Alaska OR Arizona OR Arkansas OR California OR Colorado OR Connecticut OR Delaware OR Florida OR Georgia OR Hawaii OR Idaho OR Illinois OR Indiana OR Iowa OR Kansas OR Kentucky OR Louisiana OR Maine OR Maryland OR Massachusetts OR Michigan OR Minnesota OR Mississippi OR Missouri OR Montana OR Nebraska OR Nevada OR "New Hampshire" OR "New Jersey" OR "New Mexico" OR "New York" OR "North Carolina" OR "North Dakota" OR Ohio OR Oklahoma OR Oregon OR Pennsylvania OR "Rhode Island" OR "South Carolina" OR "South Dakota" OR Tennessee OR Texas OR Utah OR Vermont OR Virginia OR Washington OR "West Virginia" OR Wisconsin OR Wyoming)

**Appendix B: Abstraction Form**

## Standard Abstraction Form

<b>Study ID</b>	<b>Study Year</b>	<b>Outcome 1</b>	<b>Year of Outcome 1 Measurement</b>	<b>Outcome 1 Measurement</b>	<b>Outcome 1 Prevalence</b>	<b>Study Population SMI Diagnoses</b>	<b>N</b>	<b>Setting</b>	<b>Type of Measurement</b>
Sample 1	2002	Diabetes	1998	High blood glucose, defined as >7 mmol/L	14%	Bipolar disorder	215	Inpatient	Clinical
Sample 2	2011	COPD	2006	Pulmonary embolism, identified by ICD-9 codes 415.11 and 415.19	0.83%	Schizophrenia and bipolar disorder	45095 1	Inpatient & Outpatient	Claims

Notes: Reviewers abstracted data into a standardized spreadsheet developed by the study PI (Dr. Daumit). An example, for one outcome, is above. In many cases, studies assessed multiple outcomes of interest. The instructions the reviewers followed when abstracting information are included on the following page.

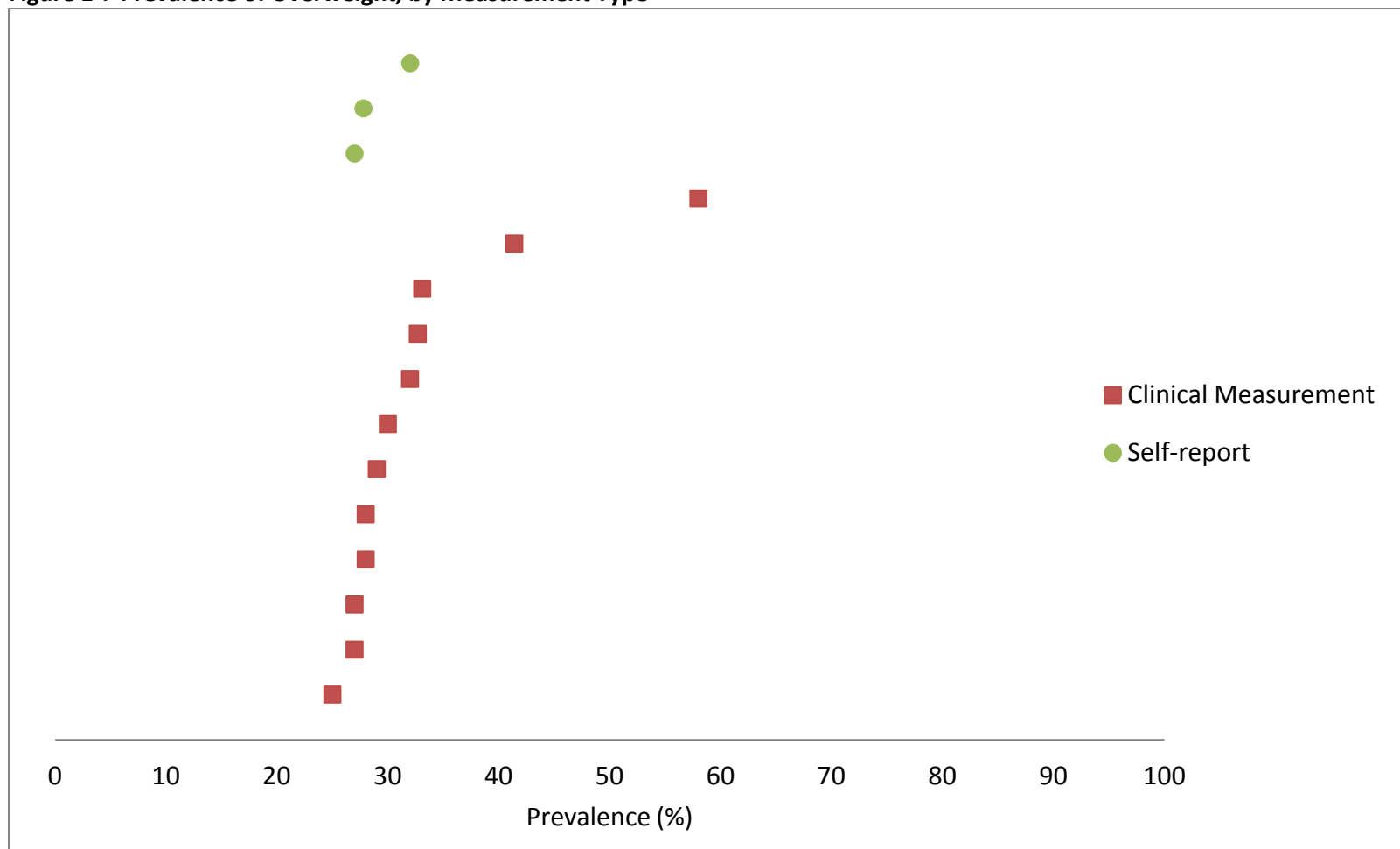
## Data abstraction instructions

For each included manuscript, abstract the following information and include it in the spreadsheet:

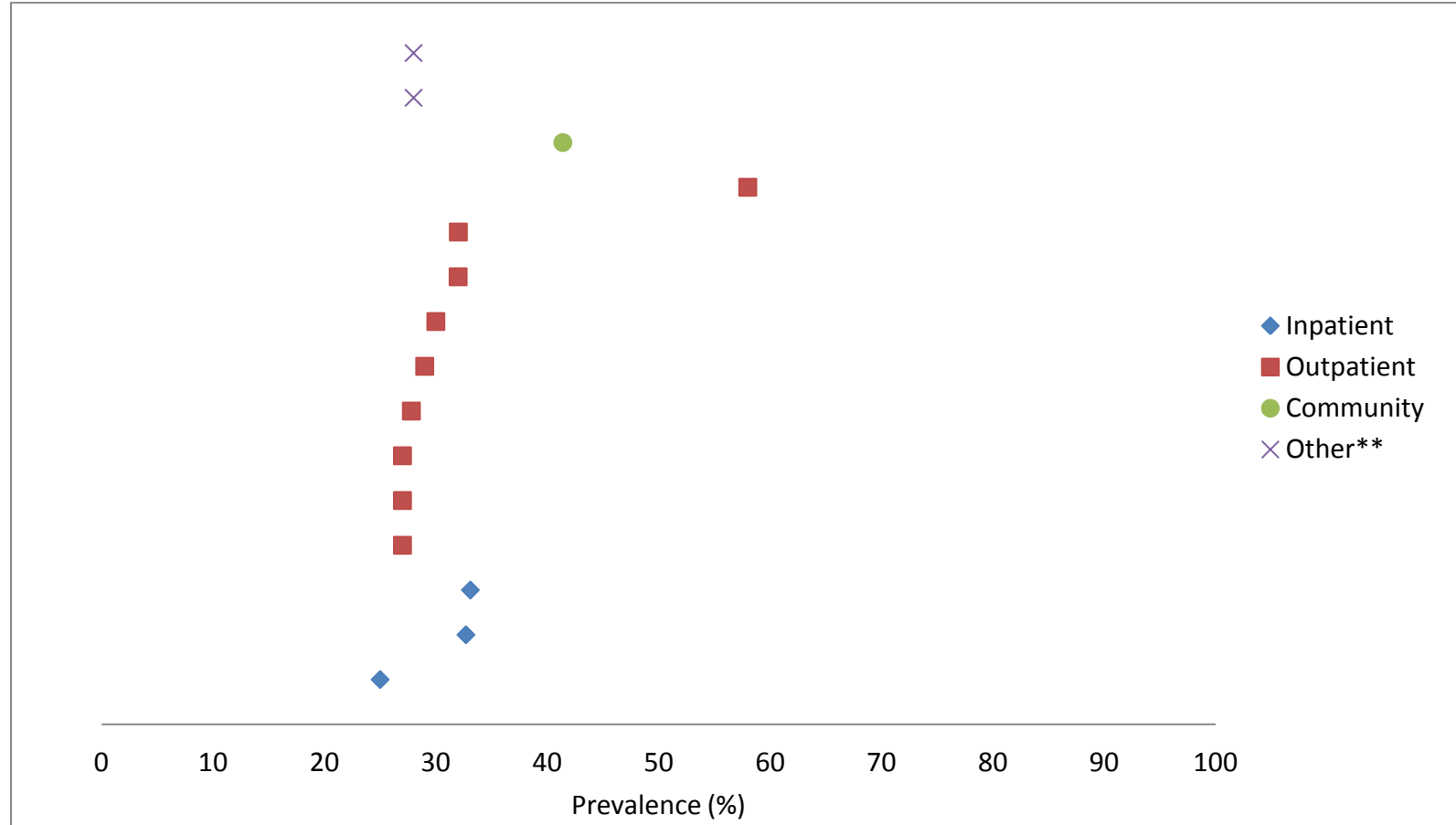
1. Study id: the number assigned to each manuscript
2. Reviewer id: your initials
3. Study author: write last name of first author
4. Study title: write title exactly as published
5. Study year: year study was published
6. Outcome 1: Choose outcome from dropdown. These are the only outcomes we're interested in; if study measures other outcomes not on this list, ignore them.
7. Outcome 1 year: Year(s) outcome 1 was measured
8. Outcome 1 measurement, include units: Describe how the measure was defined, e.g. healthy diet was defined as at least 5 servings of fruits and vegetables per day, with a serving defined as one handful. If the data was self-reported, please type "self-report" at the end of your description.
9. Outcome 1 prevalence: write the prevalence as a percent.
10. Outcome 1 SMI diagnoses: List all mental illness diagnoses present in the study sample.
11. Outcome 1 Population N: size of the sample, e.g. 400. Make sure this is the size of the sample from which the prevalence was calculated (e.g. some studies might have a comparison group without serious mental illness. In that case, the N should be only for the group with serious mental illness – NOT the entire study sample)
12. Setting: choose the appropriate setting from the dropdown (inpatient, outpatient, community, other)
13. Measurement type: choose the appropriate measurement methodology from the dropdown (claims data, clinical, self-report, other).
14. Repeat above steps for additional measures of interest included in the same paper.

## Appendix C: Figures

Figure 1<sup>1</sup>: Prevalence of Overweight, by Measurement Type<sup>1-12</sup>



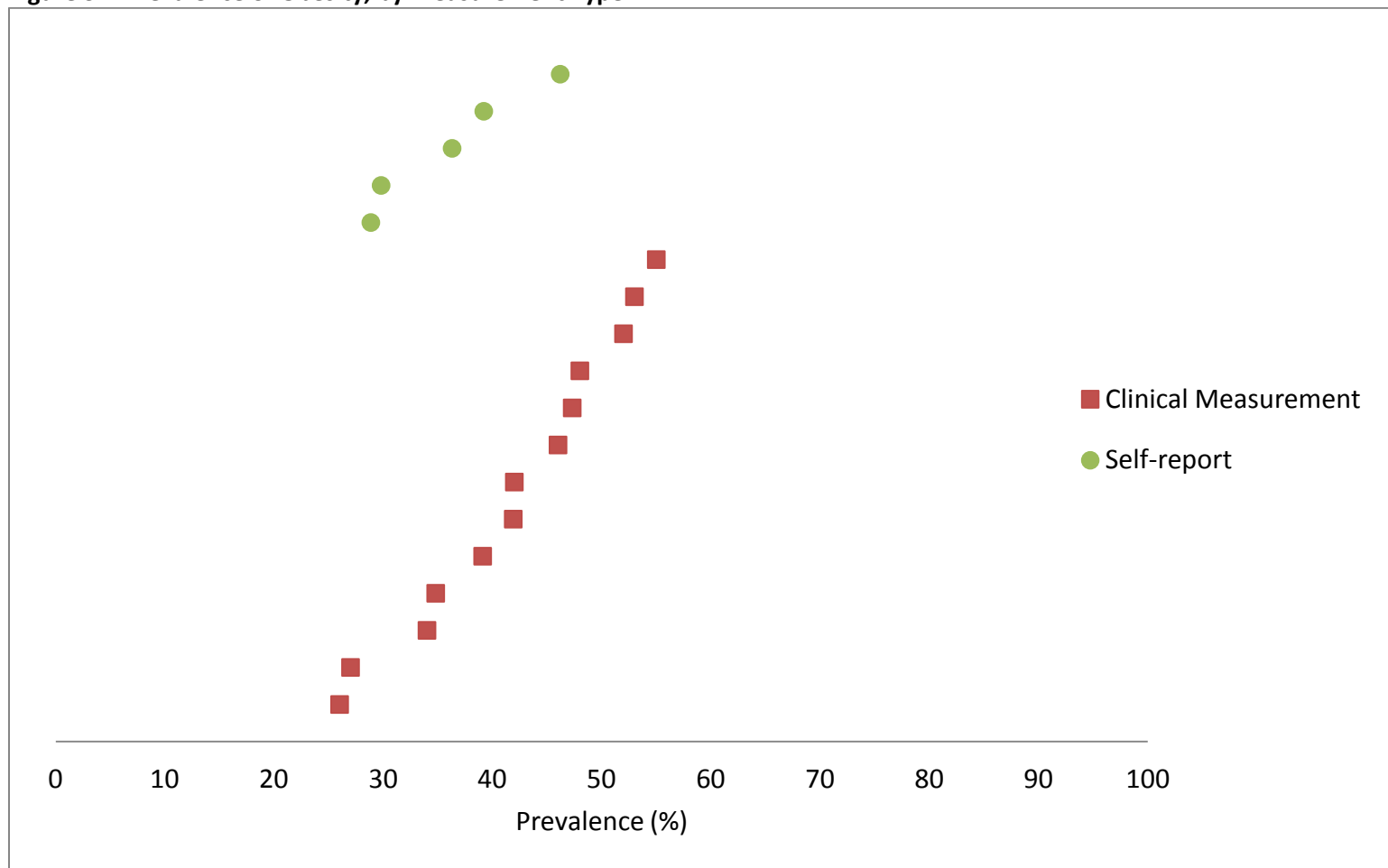
<sup>1</sup>Each study may be represented by more than one prevalence estimate

**Figure 2<sup>1</sup>: Prevalence of Overweight, by Study Population<sup>1-12</sup>**

<sup>1</sup>Each study may be represented by more than one prevalence estimate

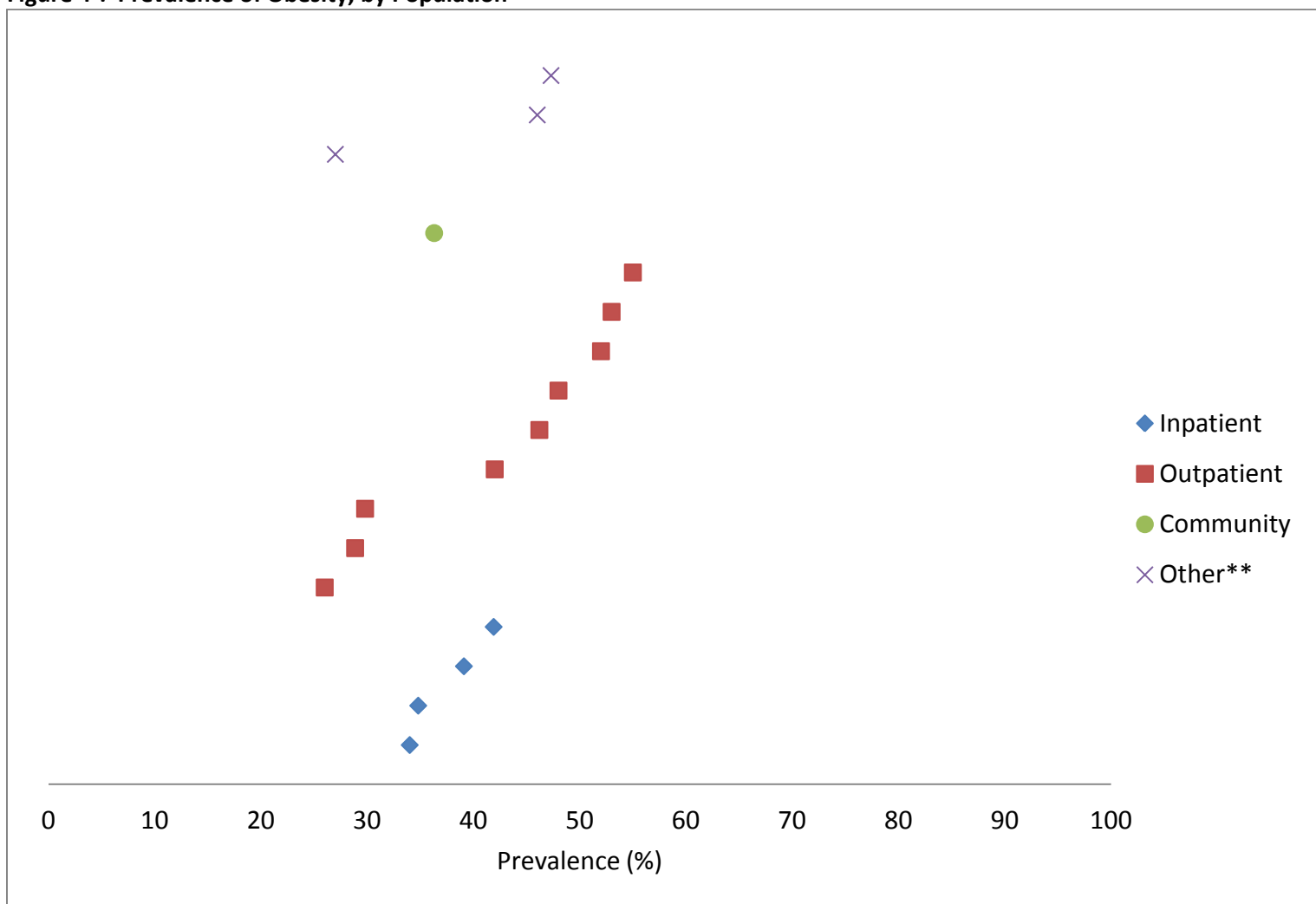
\*\* Other is defined as a mix of categorical populations, e.g. a combination of inpatient and outpatients

Figure 3<sup>1</sup>: Prevalence of Obesity, by Measurement Type<sup>1,2,4-8,10-16</sup>



<sup>1</sup>Each study may be represented by more than one prevalence estimate

Figure 4<sup>1</sup>: Prevalence of Obesity, by Population<sup>1,2,4-8,10-16</sup>

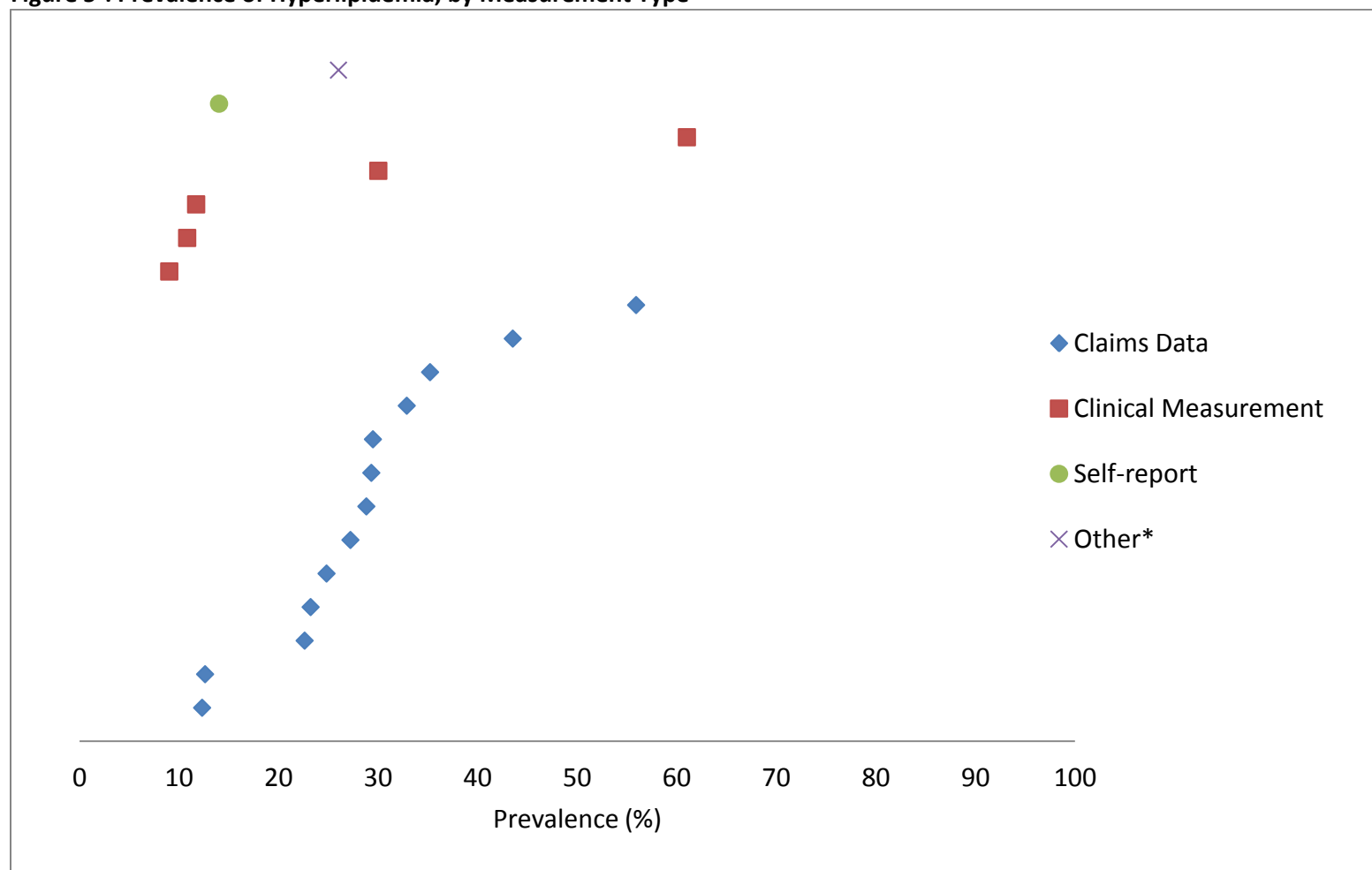


\*\* Other is defined as a mix of categorical populations, e.g. a combination of inpatient and outpatients

<sup>1</sup>Each study may be represented by more than one prevalence estimate



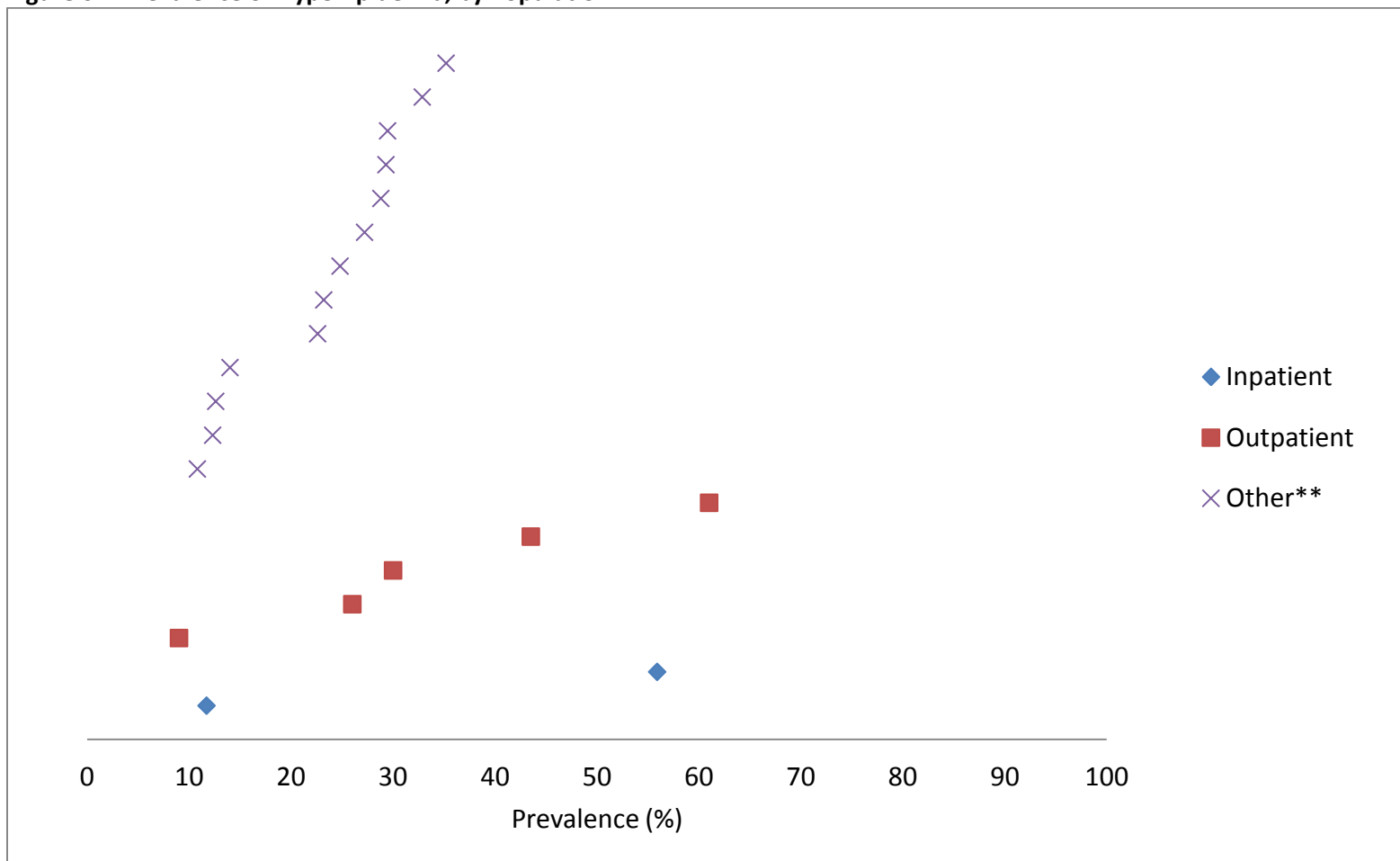
Figure 5<sup>1</sup>: Prevalence of Hyperlipidemia, by Measurement Type<sup>1,13,17-28</sup>



<sup>1</sup>Each study may be represented by more than one prevalence estimate

\*Other is defined as a mix of categorical measure types, e.g. a combination of clinical and claims

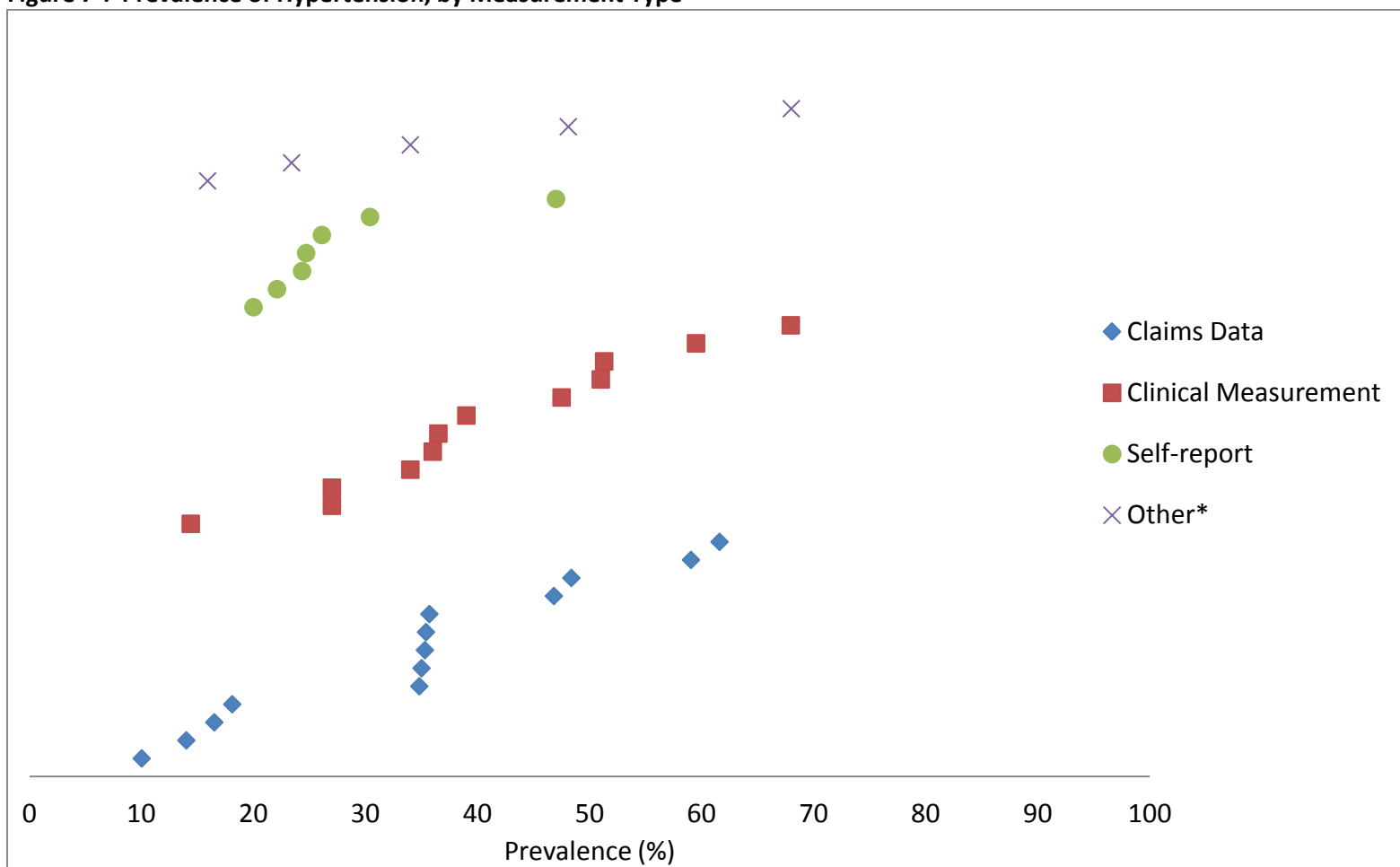
Figure 6<sup>1</sup>: Prevalence of Hyperlipidemia, by Population<sup>1,13,17-28</sup>



<sup>1</sup>Each study may be represented by more than one prevalence estimate

\*\* Other is defined as a mix of categorical populations, e.g. a combination of inpatient and outpatients

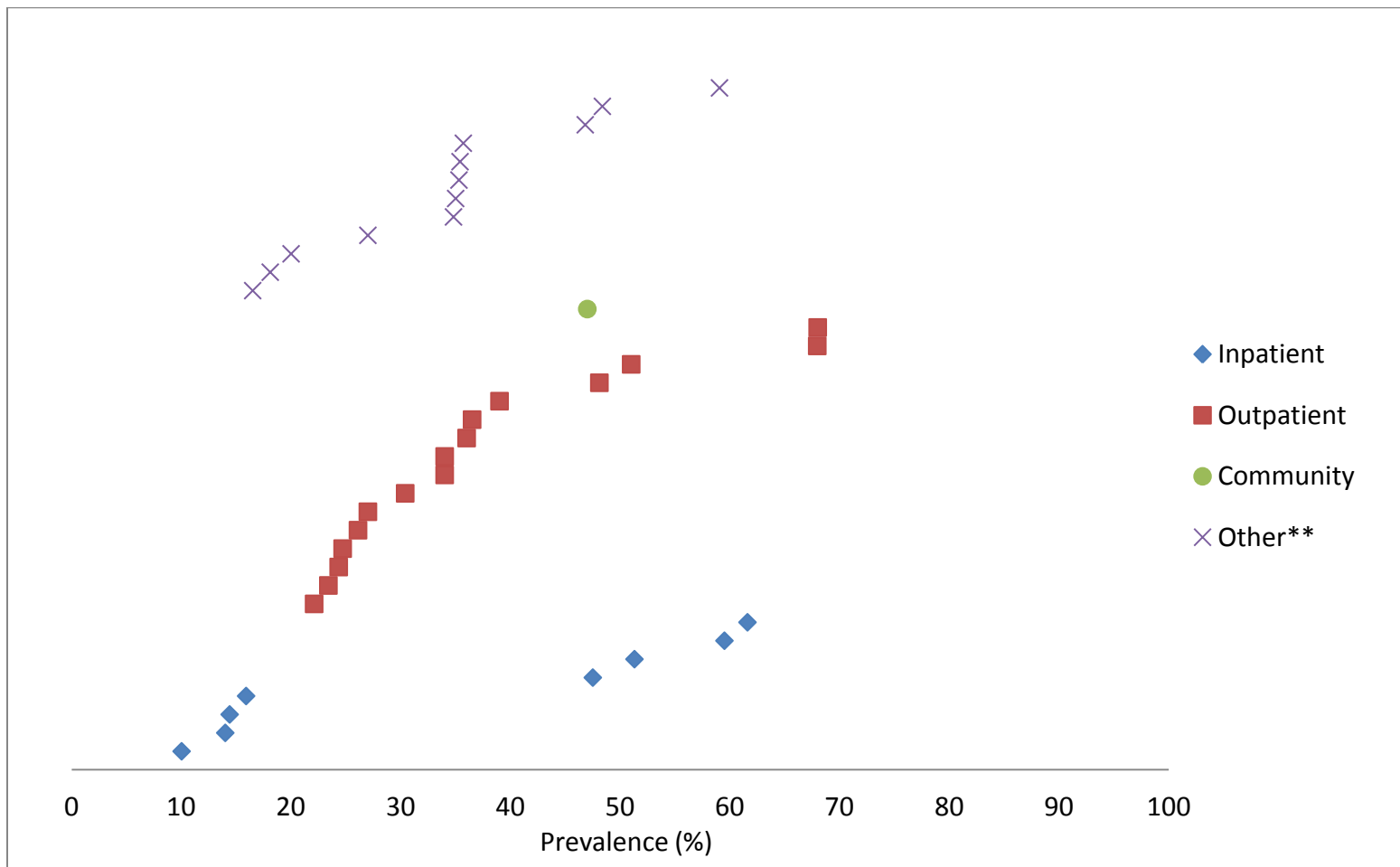
Figure 7<sup>1</sup>: Prevalence of Hypertension, by Measurement Type<sup>1,4,5,8,11,13,16-25,27-39</sup>



<sup>1</sup>Each study may be represented by more than one prevalence estimate

\* Other is defined as a mix of categorical measure types, e.g. a combination of clinical and claims data

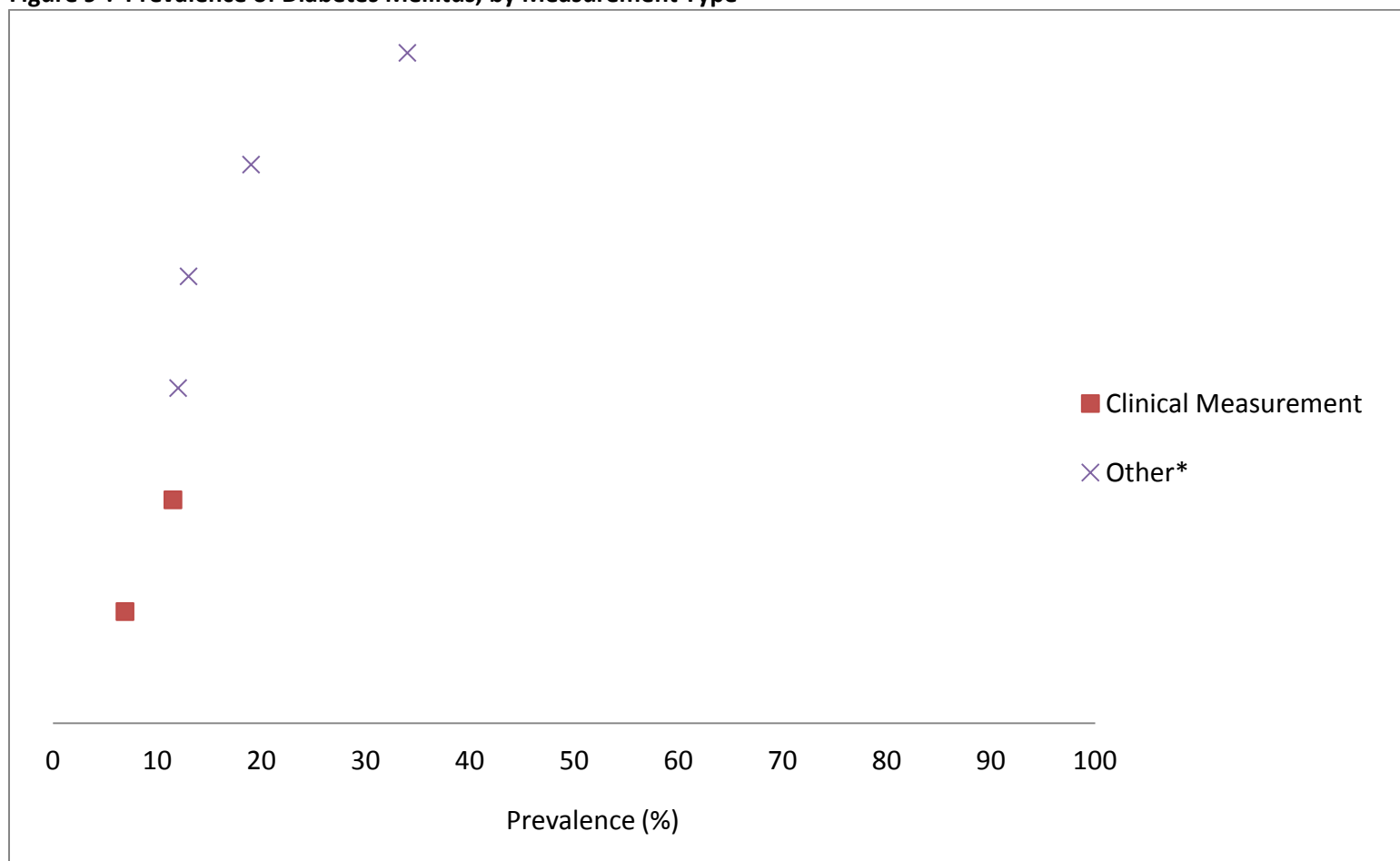
Figure 8<sup>1</sup>: Prevalence of Hypertension, by Population<sup>1,4,5,8,11,13,16-25,27-39</sup>



<sup>1</sup>Each study may be represented by more than one prevalence estimate

\*\* Other is defined as a mix of categorical populations, e.g. a combination of inpatient and outpatients

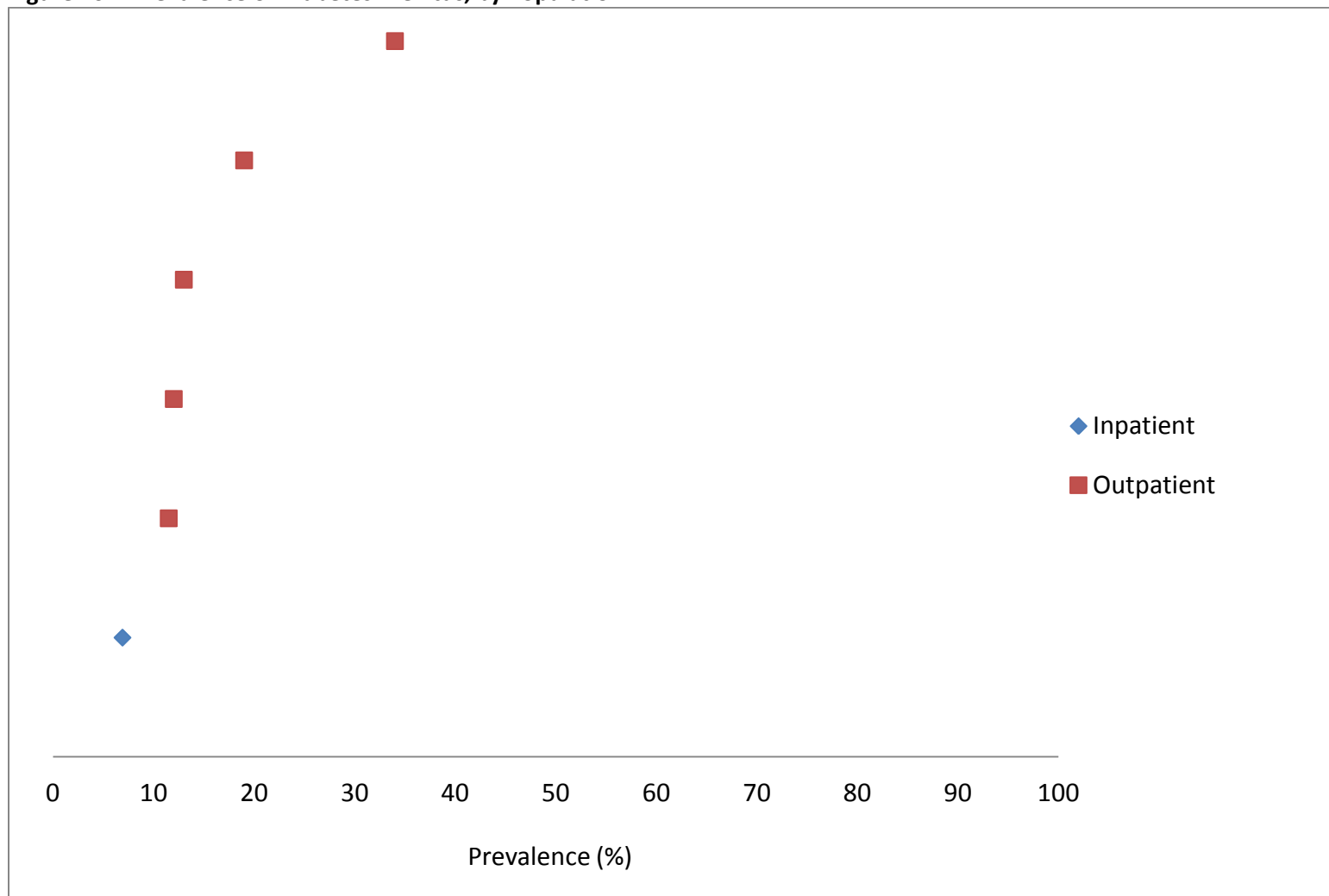
Figure 9<sup>1</sup>: Prevalence of Diabetes Mellitus, by Measurement Type<sup>1,23,28,34,35,40</sup>



<sup>1</sup>Each study may be represented by more than one prevalence estimate

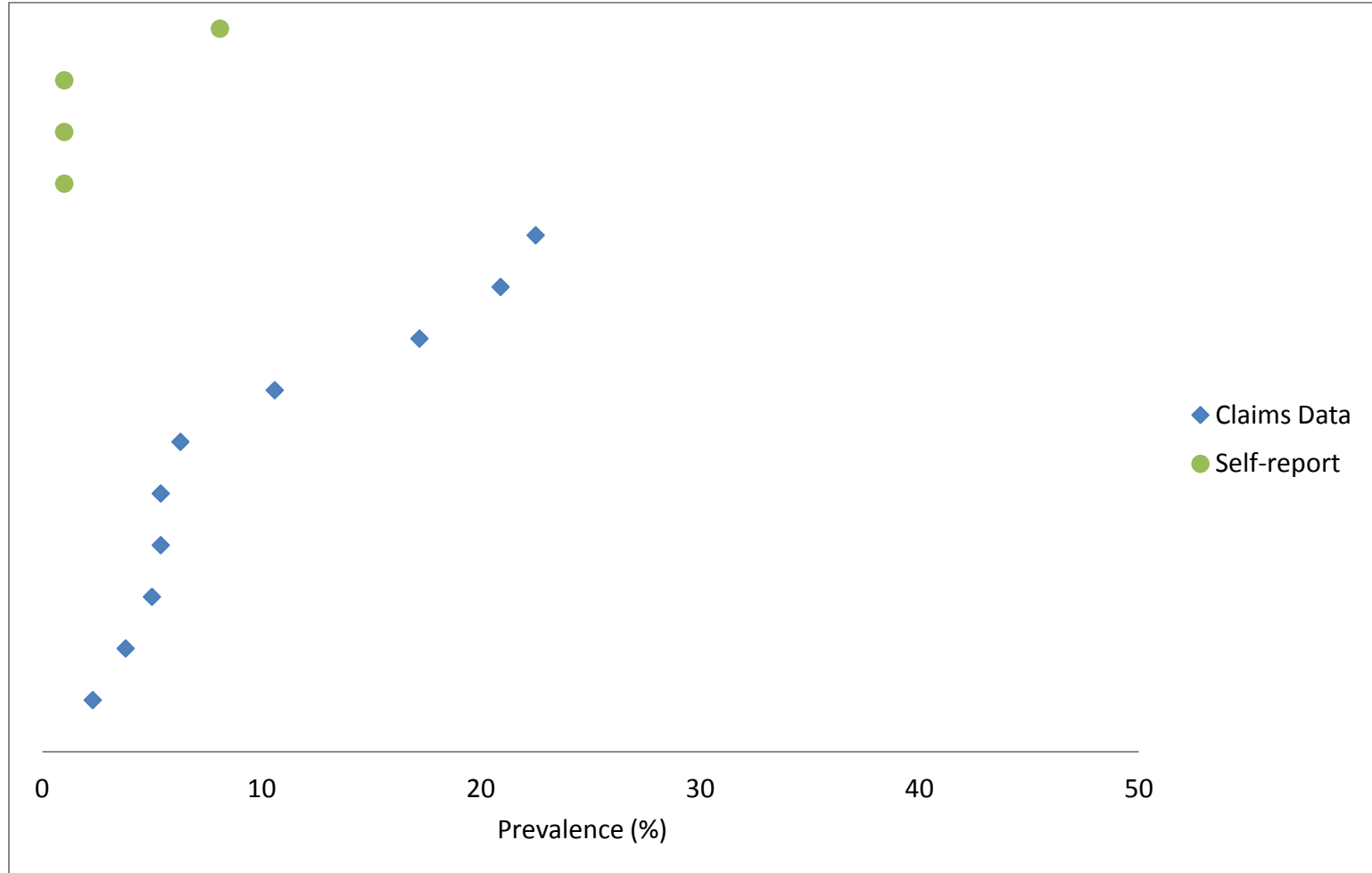
\* Other is defined as a mix of categorical populations, e.g. a combination of inpatient and outpatients

Figure 10<sup>1</sup>: Prevalence of Diabetes Mellitus, by Population<sup>1,23,28,34,35,40</sup>



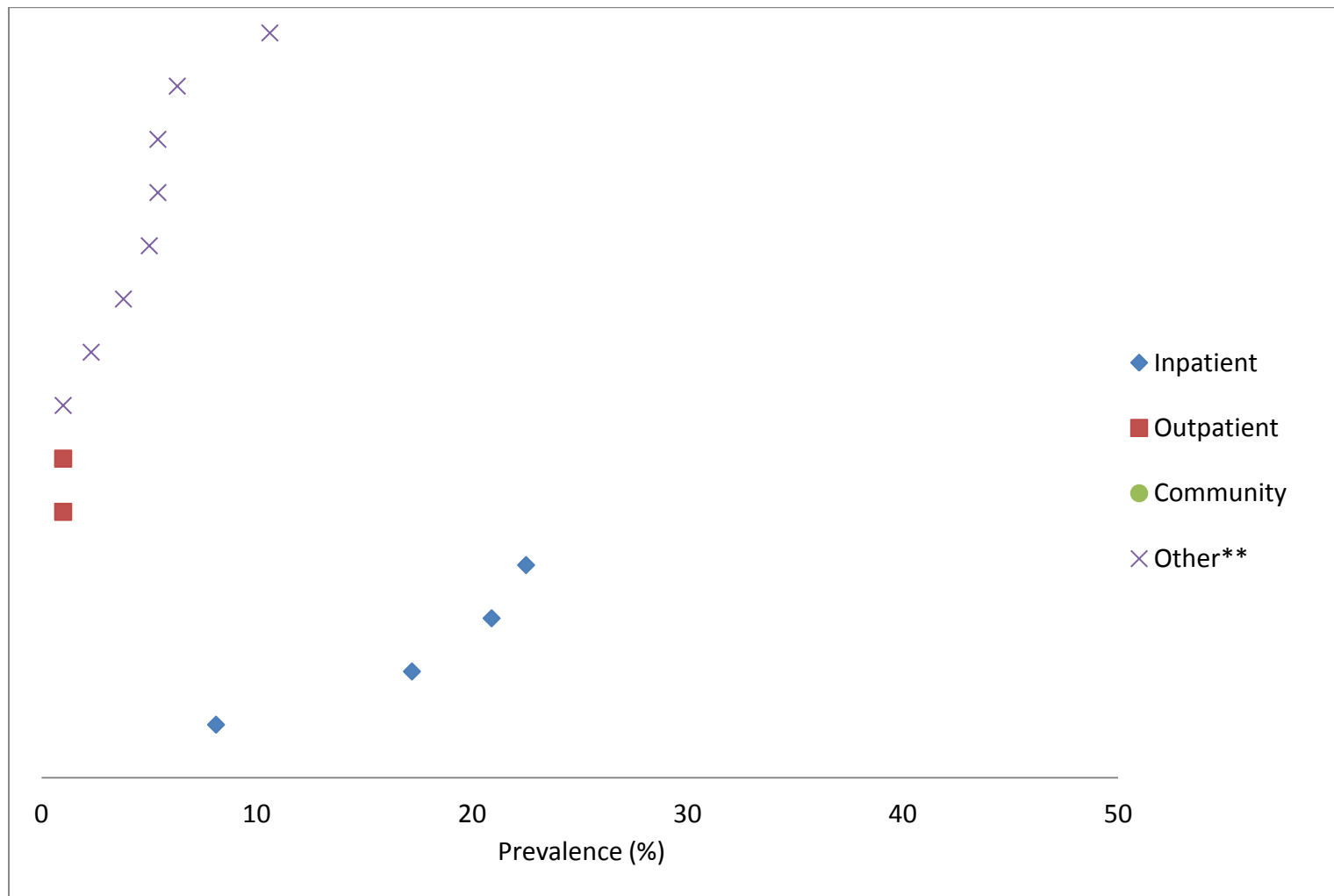
<sup>1</sup>Each study may be represented by more than one prevalence estimate

Figure 11<sup>1</sup>: Prevalence of Coronary Heart Disease, Coronary Artery Disease, and Ischemic Heart Disease, by Measurement Type<sup>13,17-20,27,33,41</sup>



<sup>1</sup>Each study may be represented by more than one prevalence estimate

Figure 12<sup>1</sup>: Prevalence of Coronary Heart Disease, Coronary Artery Disease, and Ischemic Heart Disease, by Population<sup>13,17-20,27,33,41</sup>

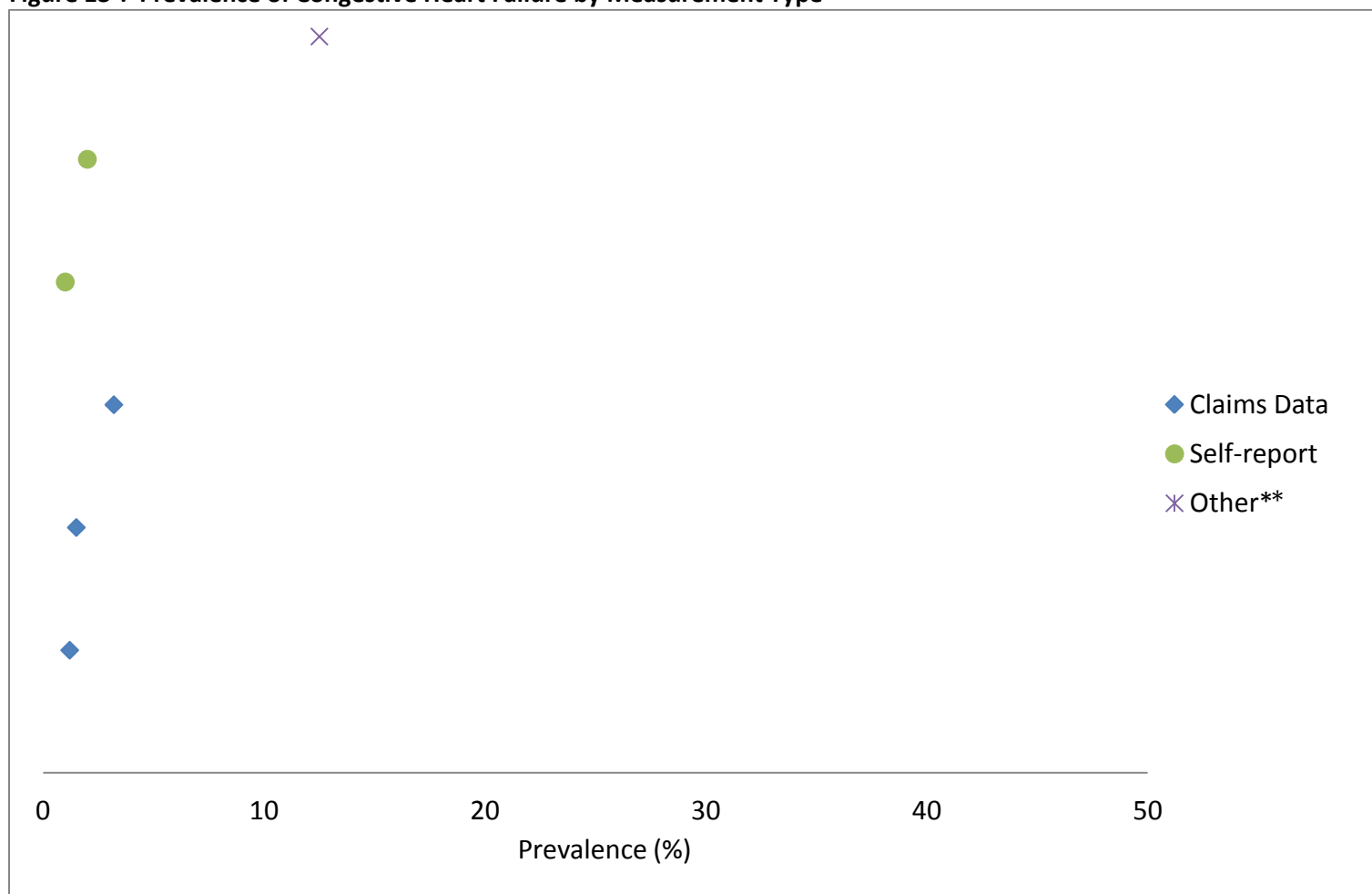


<sup>1</sup>Each study may be represented by more than one prevalence estimate

\*\* Other is defined as a mix of categorical populations, e.g. a combination of inpatient and outpatients



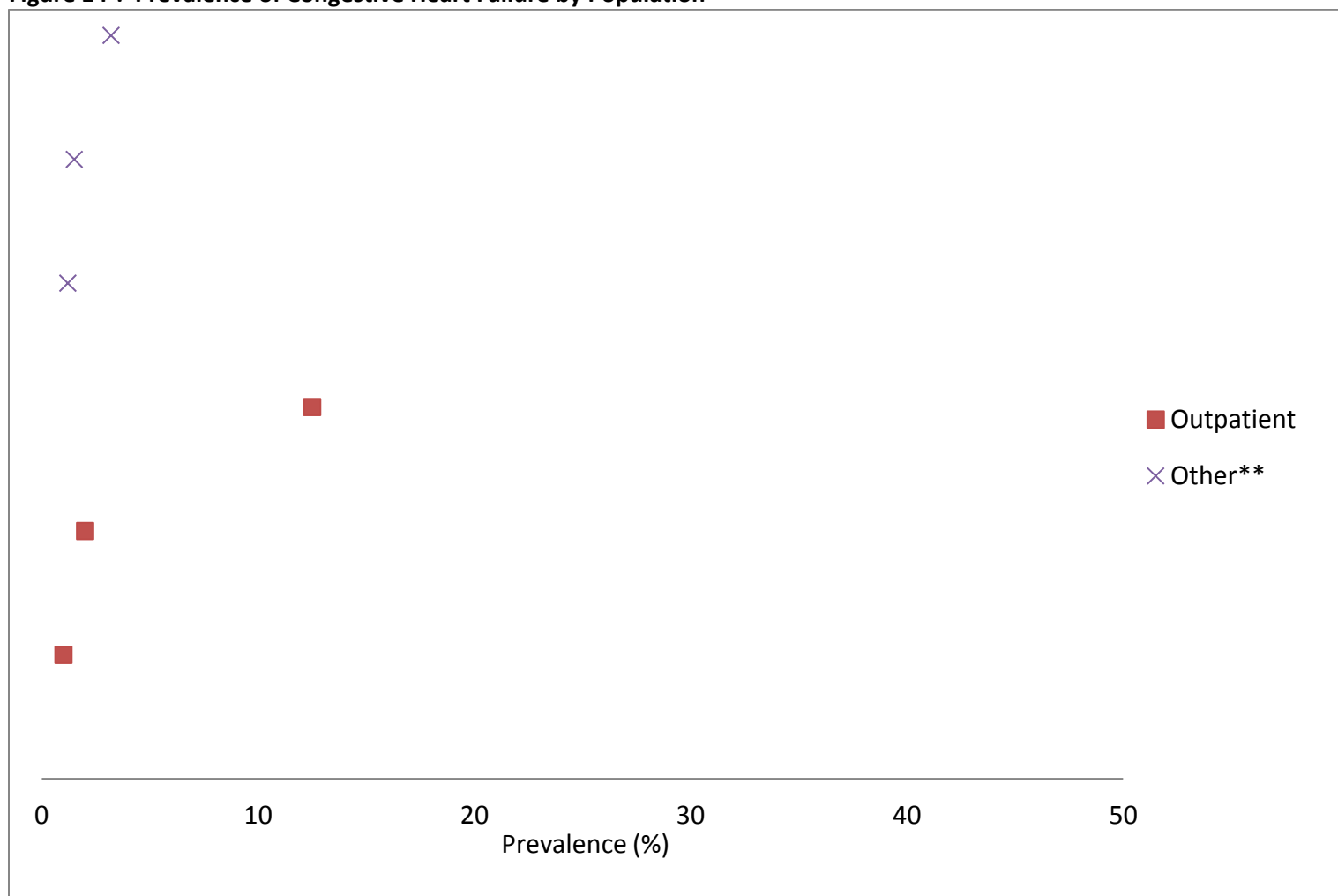
Figure 13<sup>1</sup>: Prevalence of Congestive Heart Failure by Measurement Type<sup>18-20,33,42</sup>



<sup>1</sup>Each study may be represented by more than one prevalence estimate

\*\*Other is defined as a mix of categorical measure types, e.g. a combination of clinical and claims data

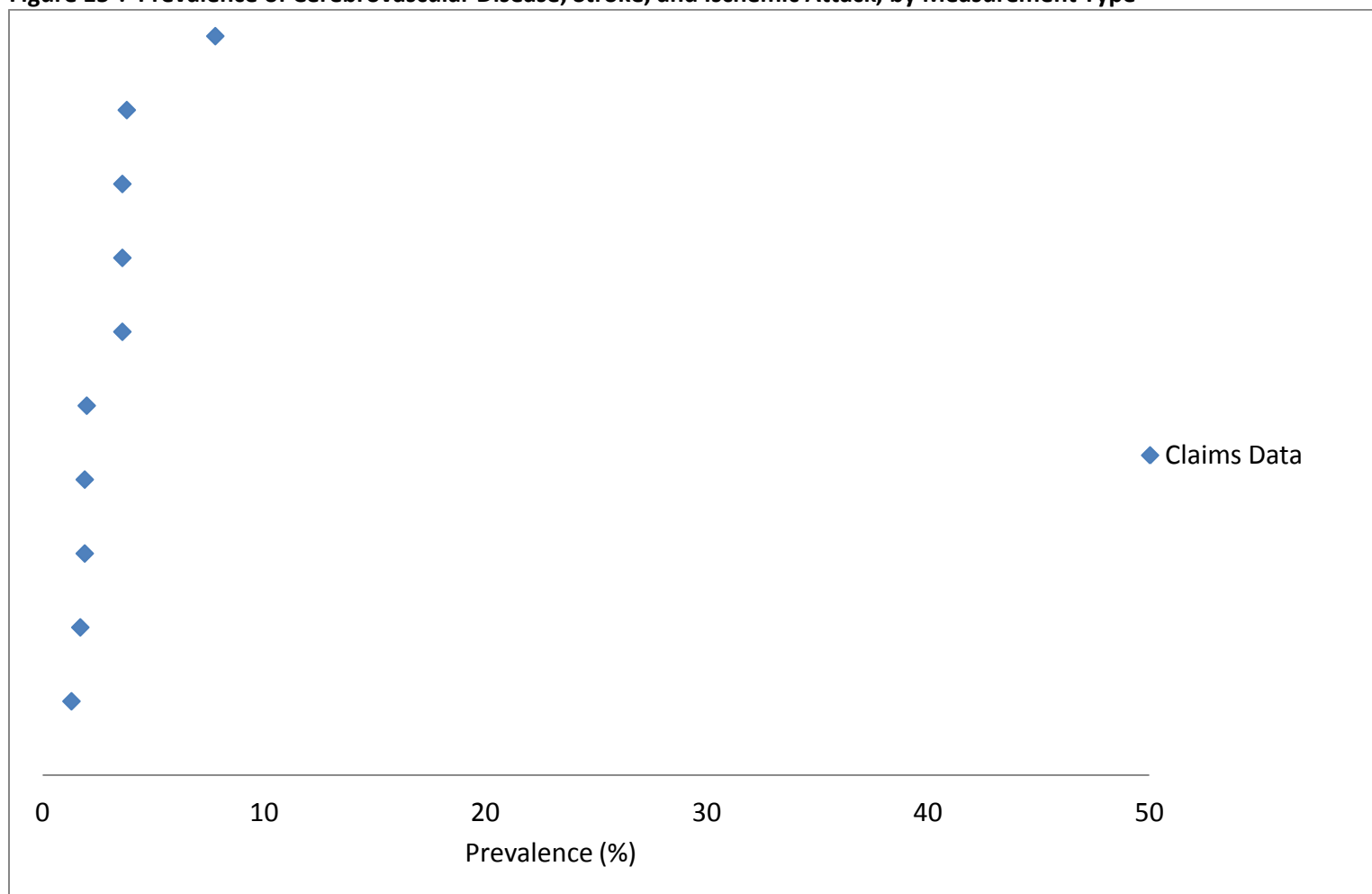
Figure 14<sup>1</sup>: Prevalence of Congestive Heart Failure by Population<sup>18-20,33,42</sup>



<sup>1</sup>Each study may be represented by more than one prevalence estimate

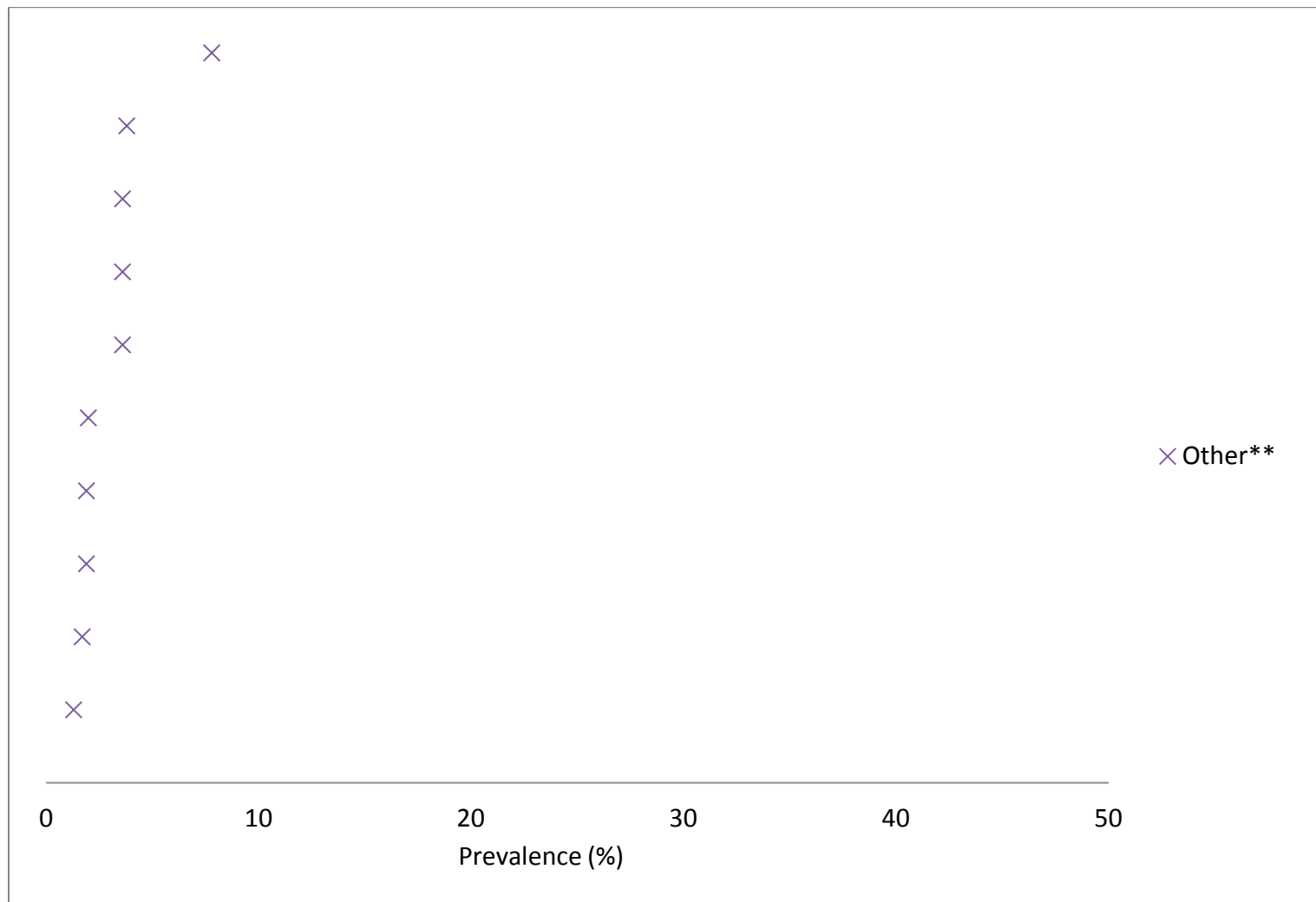
\*\* Other is defined as a mix of categorical populations, e.g. a combination of inpatient and outpatients

Figure 15<sup>1</sup>: Prevalence of Cerebrovascular Disease, Stroke, and Ischemic Attack, by Measurement Type<sup>17-21</sup>



<sup>1</sup>Each study may be represented by more than one prevalence estimate

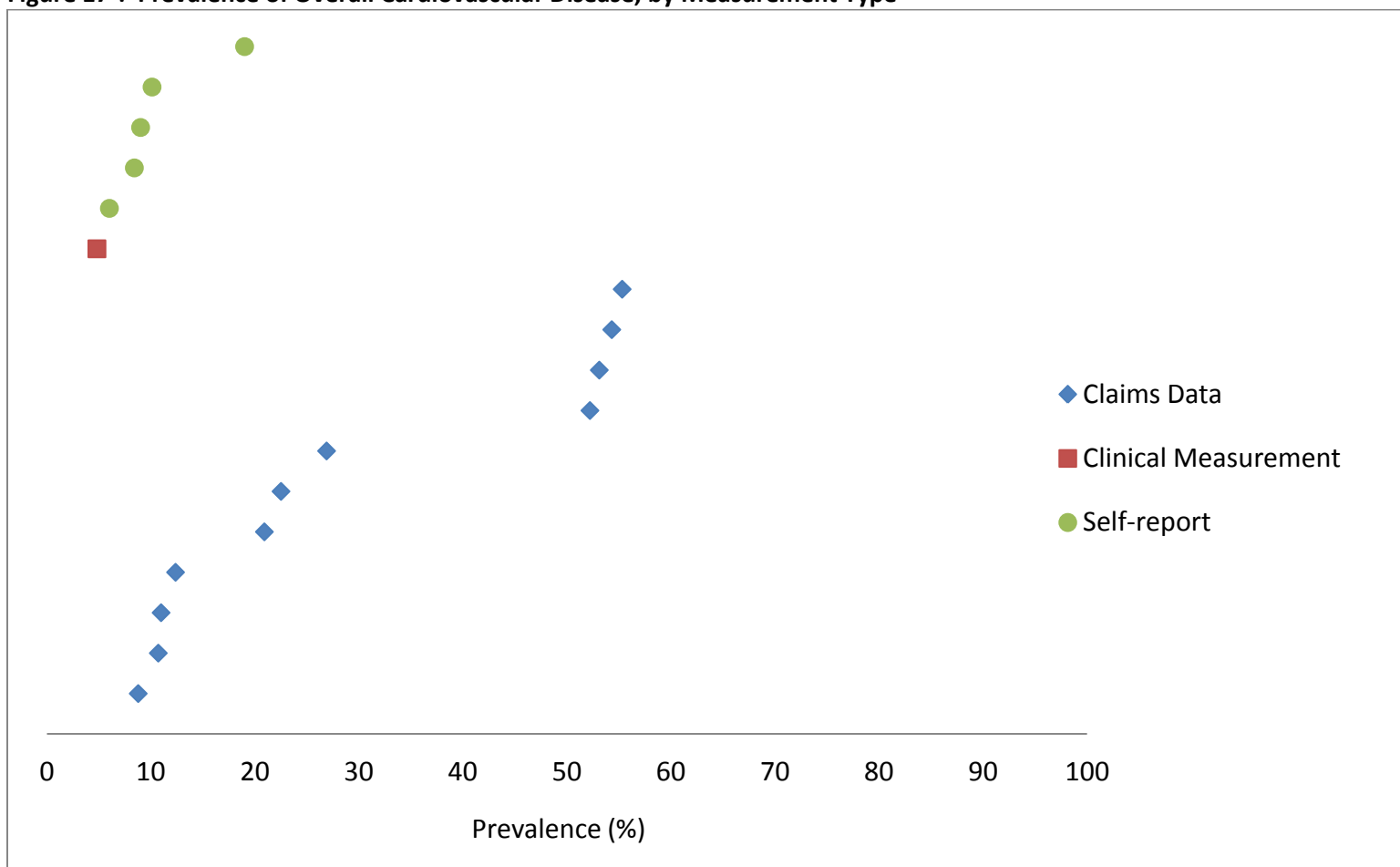
Figure 16<sup>1</sup>: Prevalence of Cerebrovascular Disease, Stroke, and Ischemic Attack, by Population<sup>17-21</sup>



<sup>1</sup>Each study may be represented by more than one prevalence estimate

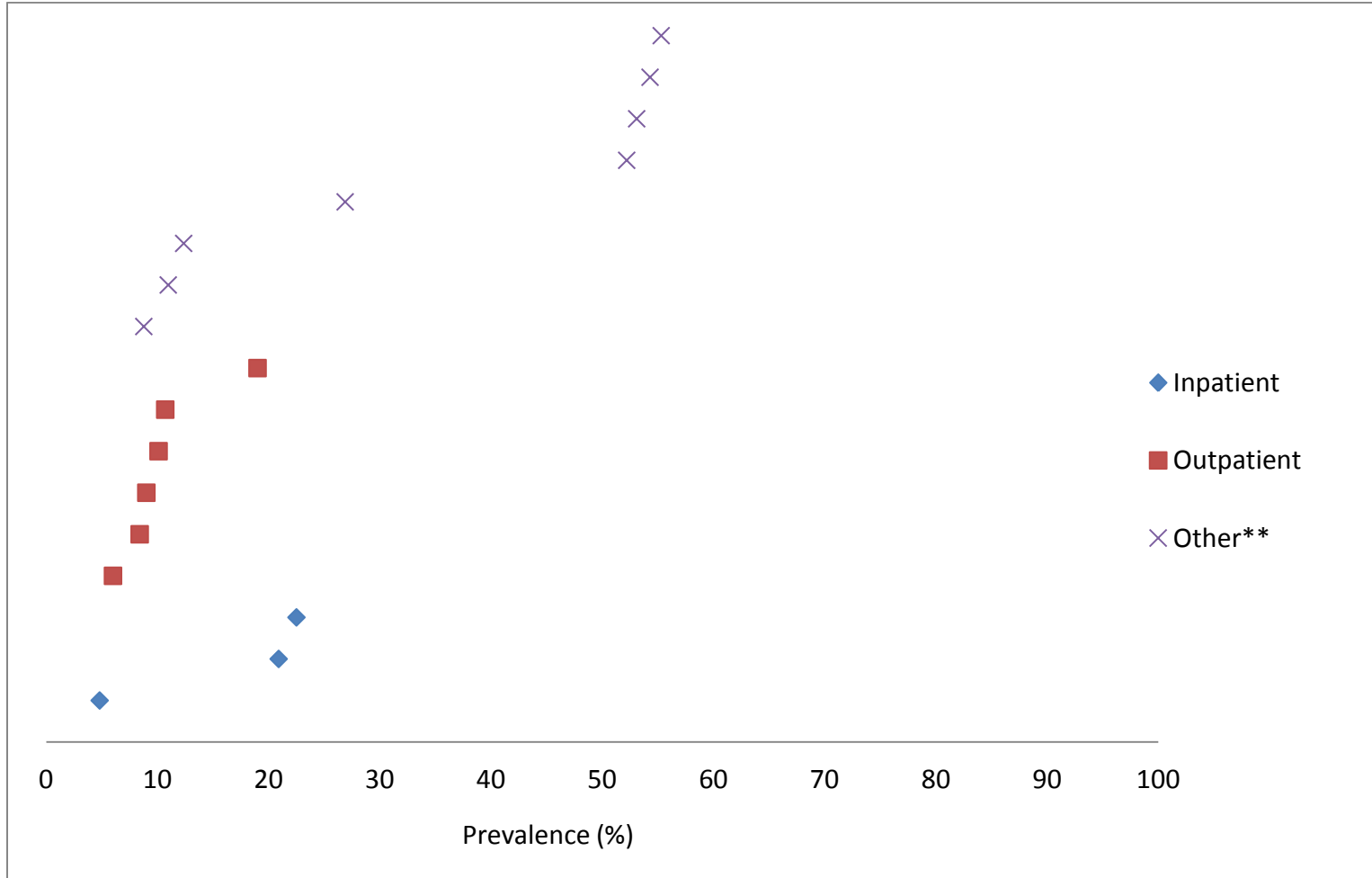
\*\* Other is defined as a mix of categorical populations, e.g. a combination of inpatient and outpatients

## OVERALL CARDIOVASCULAR DISEASE

Figure 17<sup>1</sup>: Prevalence of Overall Cardiovascular Disease, by Measurement Type<sup>13,16,17,21,23,29,33,38,39,43</sup>

<sup>1</sup>Each study may be represented by more than one prevalence estimate

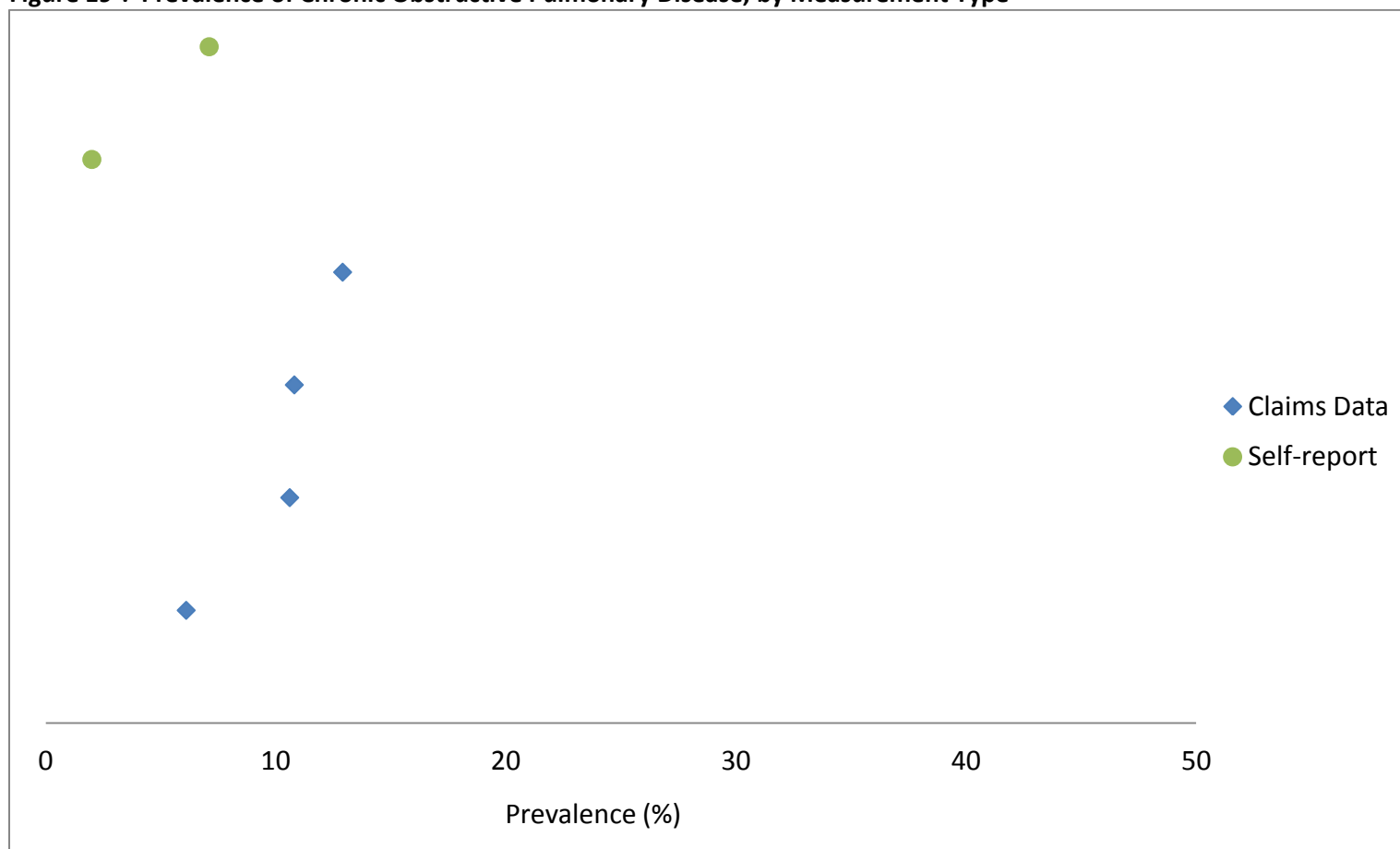
Figure 18<sup>1</sup>: Prevalence of Overall Cardiovascular Disease, by Population<sup>13,16,17,21,23,29,33,38,39,43</sup>



<sup>1</sup>Each study may be represented by more than one prevalence estimate

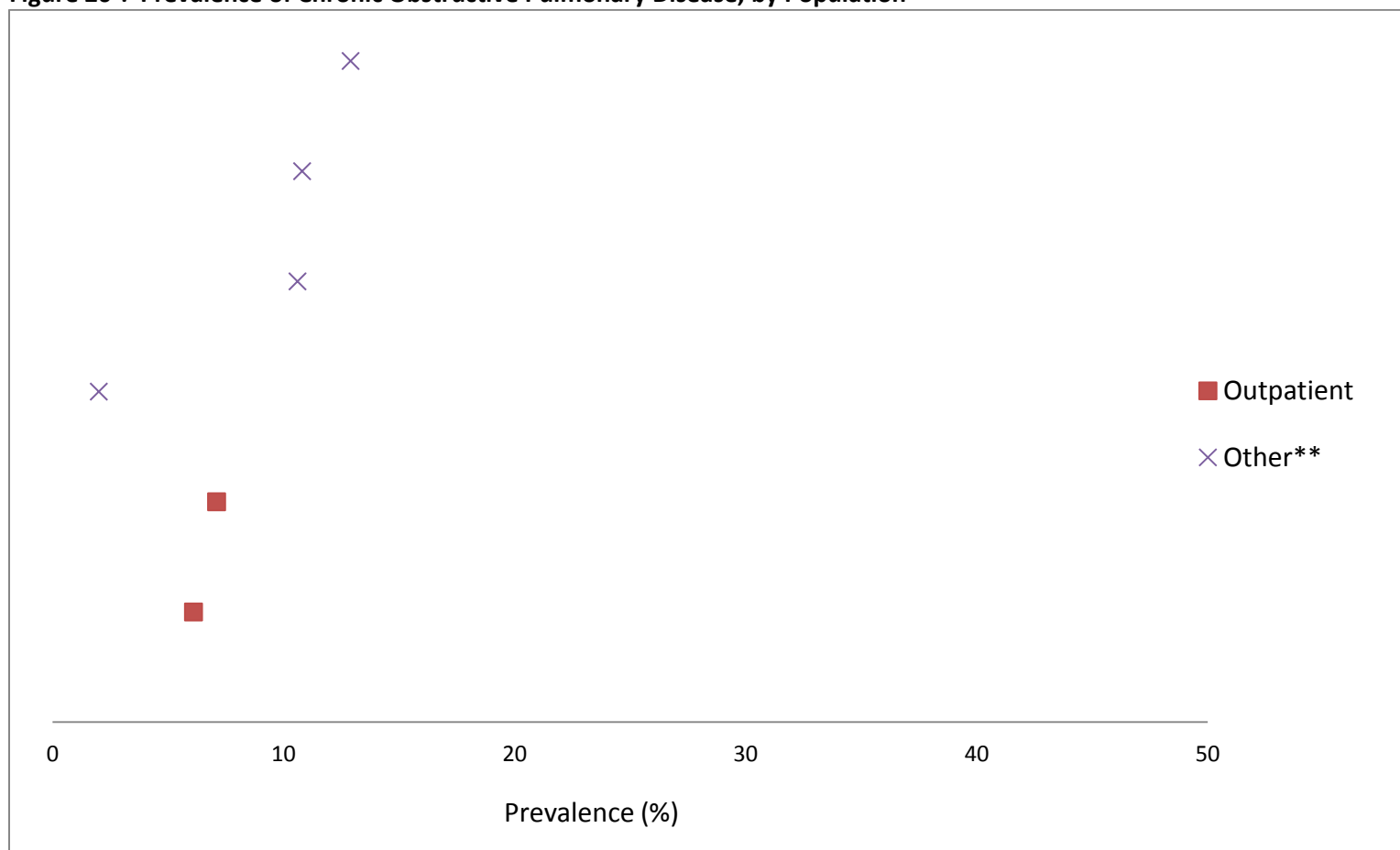
\*\* Other is defined as a mix of categorical populations, e.g. a combination of inpatient and outpatients

Figure 19<sup>1</sup>: Prevalence of Chronic Obstructive Pulmonary Disease, by Measurement Type<sup>18-20,27,38,43</sup>



<sup>1</sup>Each study may be represented by more than one prevalence estimate

Figure 20<sup>1</sup>: Prevalence of Chronic Obstructive Pulmonary Disease, by Population<sup>18-20,27,38,43</sup>

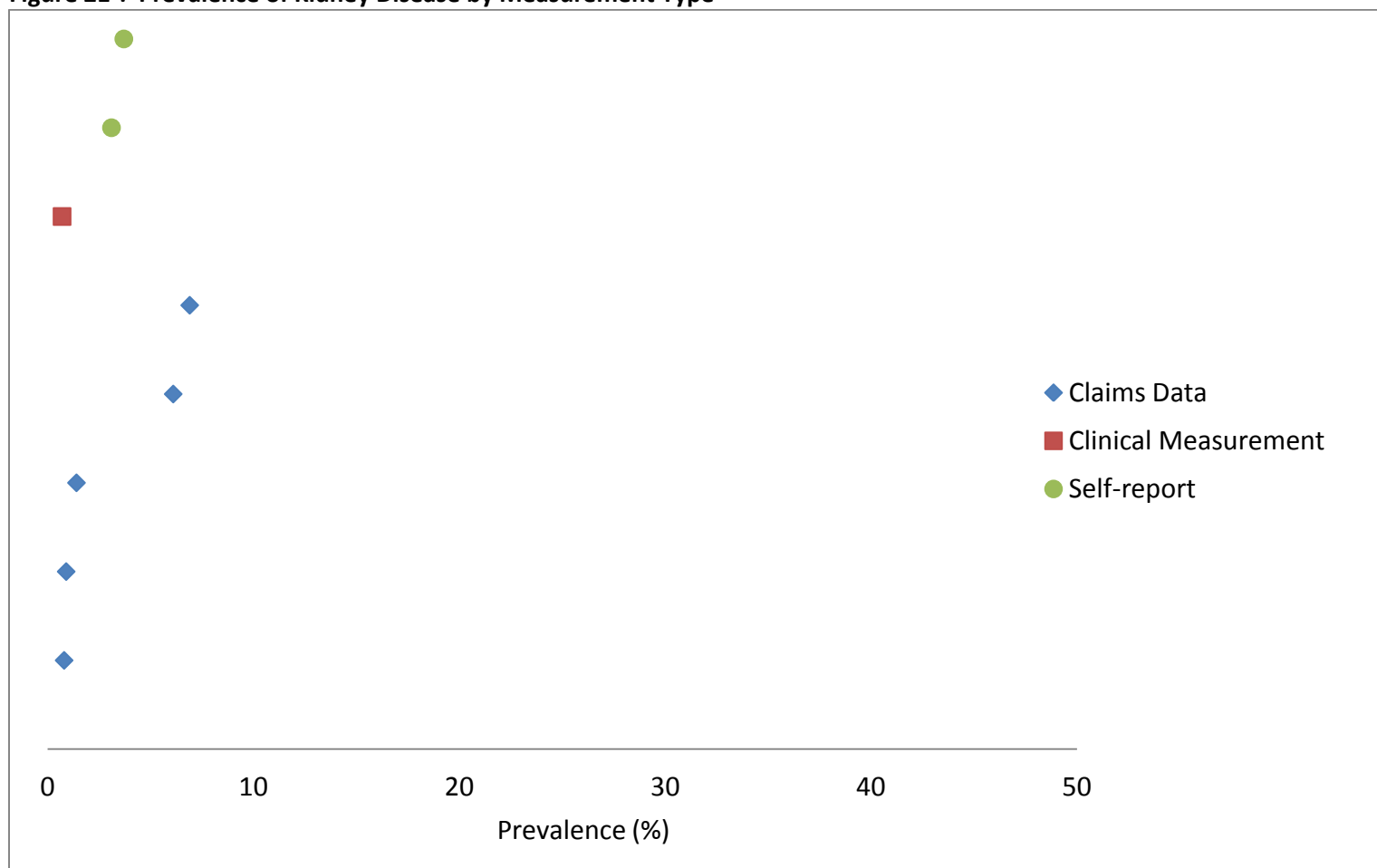


<sup>1</sup>Each study may be represented by more than one prevalence estimate

\*\* Other is defined as a mix of categorical populations, e.g. a combination of inpatient and outpatients<sup>18-20,27</sup>

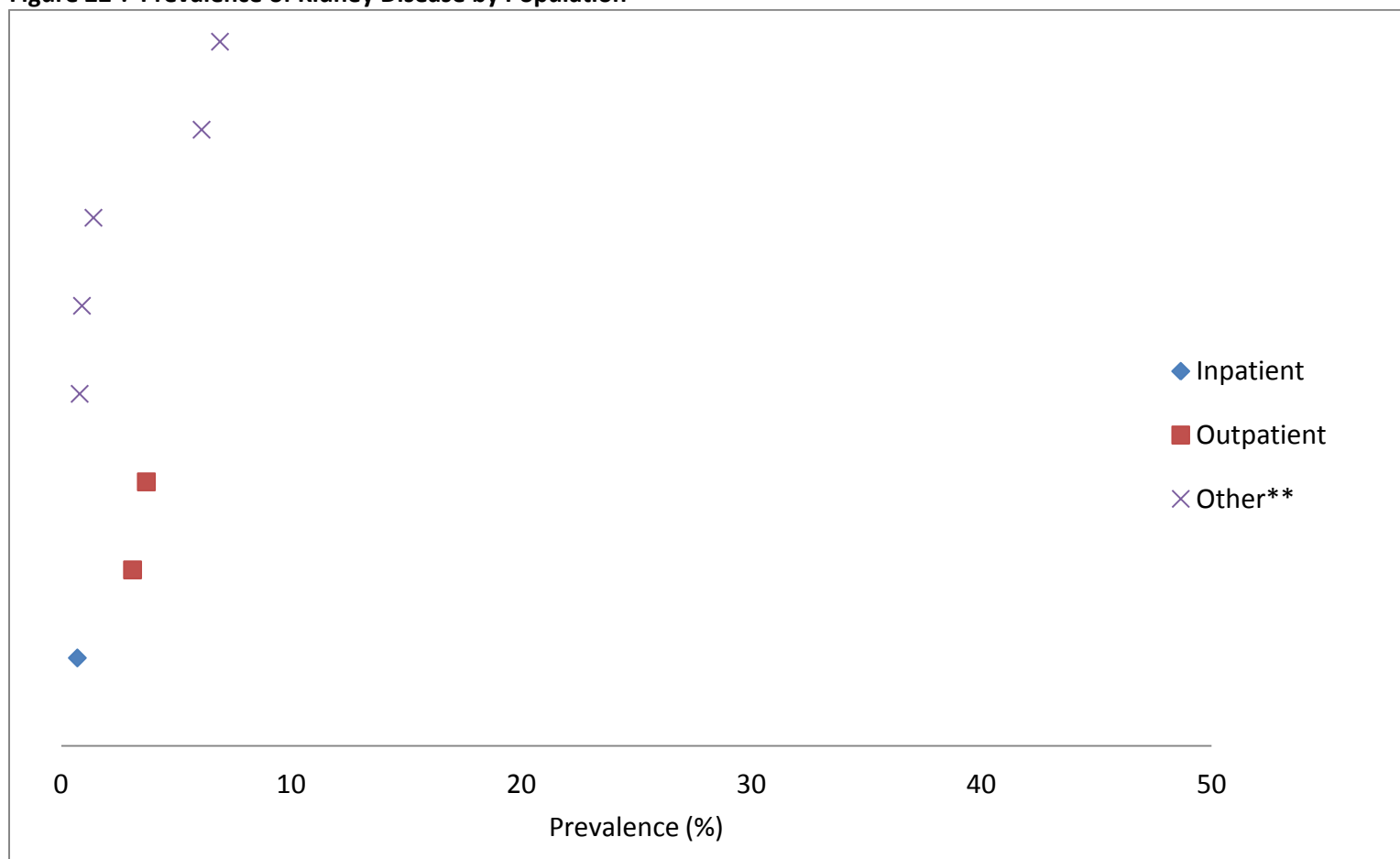


Figure 21<sup>1</sup>: Prevalence of Kidney Disease by Measurement Type<sup>18-20,31,33</sup>



<sup>1</sup>Each study may be represented by more than one prevalence estimate

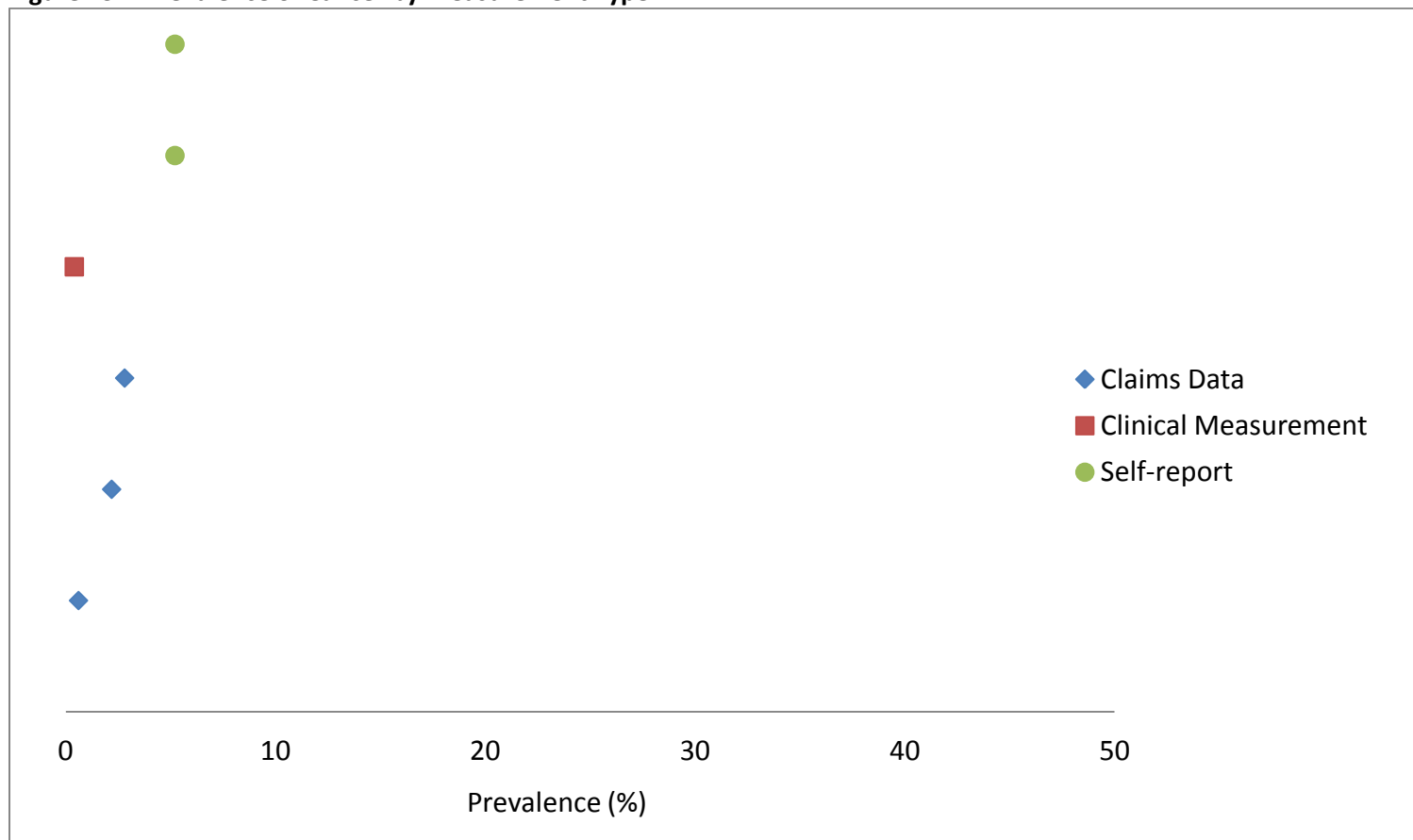
Figure 22<sup>1</sup>: Prevalence of Kidney Disease by Population<sup>18-20,31,33</sup>



<sup>1</sup>Each study may be represented by more than one prevalence estimate

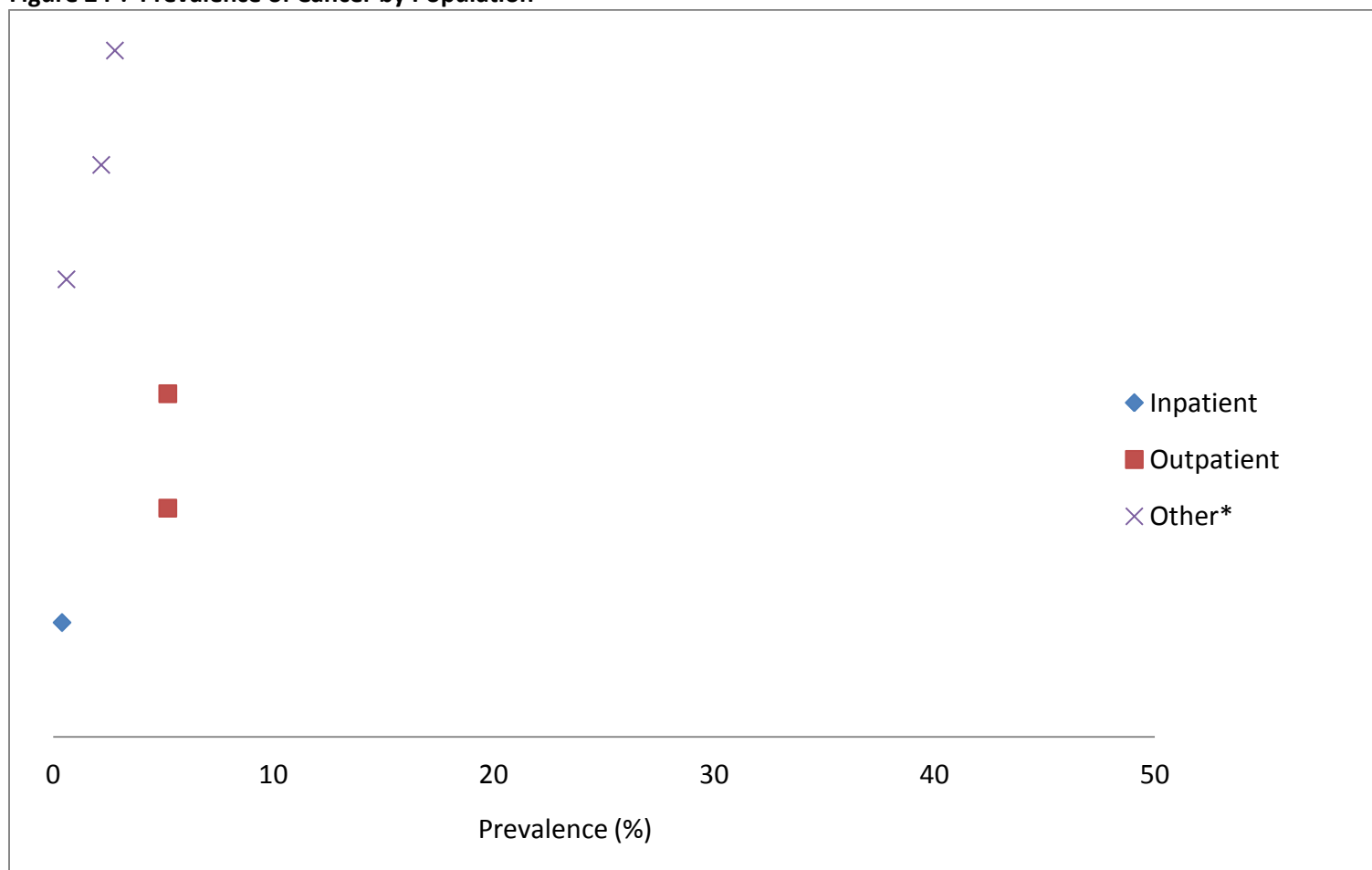
\*\* Other is defined as a mix of categorical populations, e.g. a combination of inpatient and outpatients

Figure 23<sup>1</sup>: Prevalence of Cancer by Measurement Type<sup>18,29,31,33</sup>



<sup>1</sup>Each study may be represented by more than one prevalence estimate

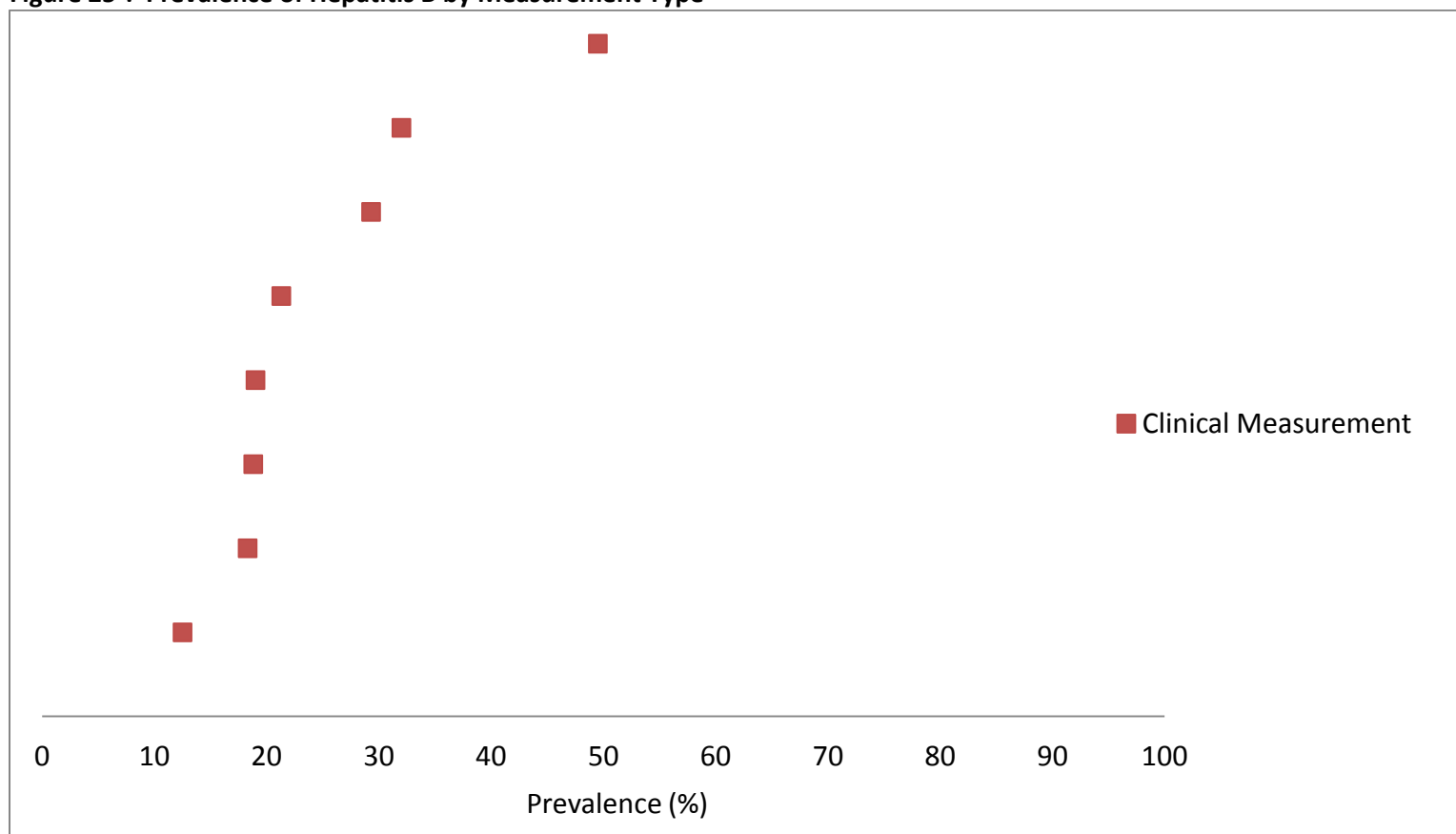
Figure 24<sup>1</sup>: Prevalence of Cancer by Population<sup>18,29,31,33</sup>



<sup>1</sup>Each study may be represented by more than one prevalence estimate

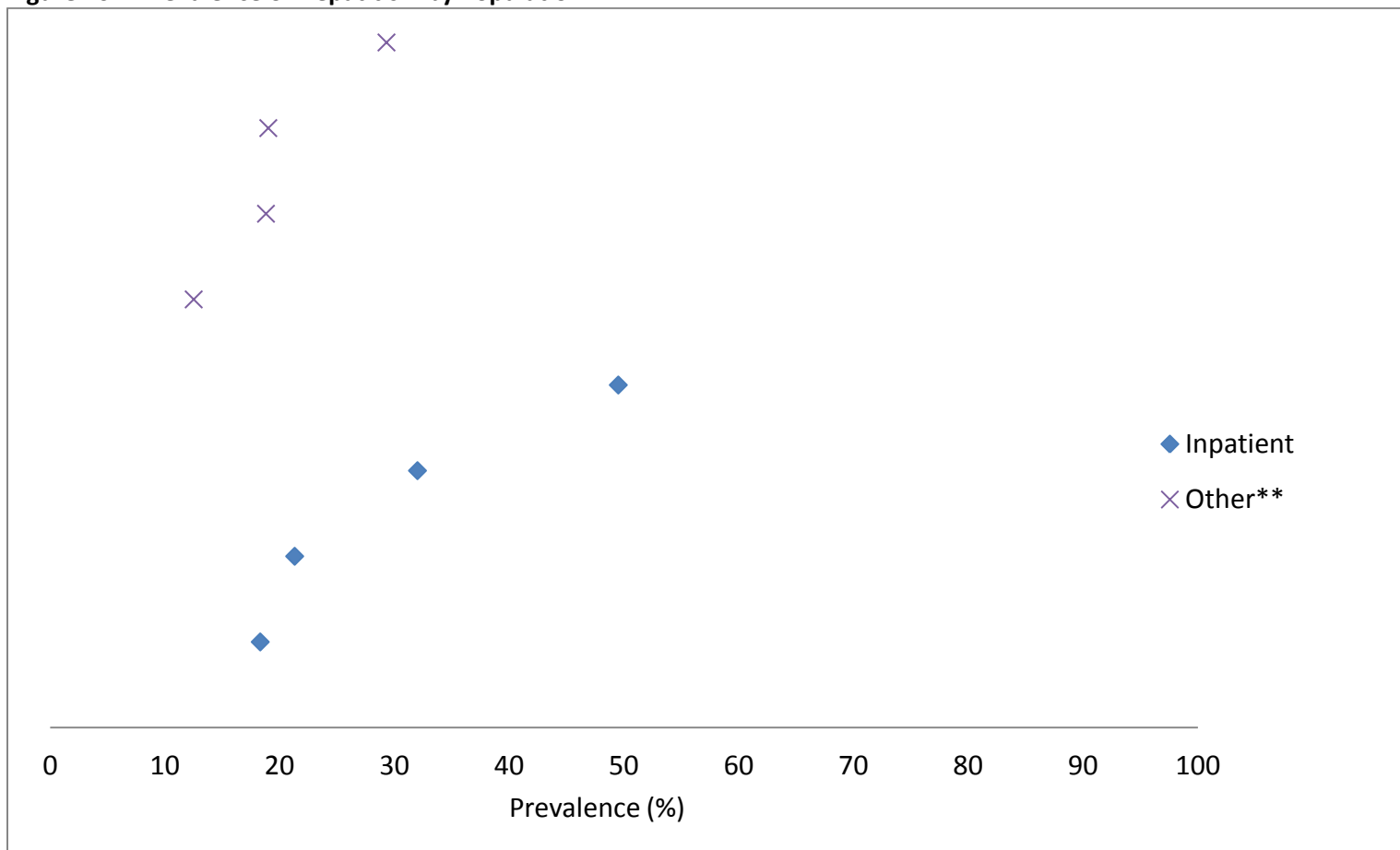
\*\* Other is defined as a mix of categorical populations, e.g. a combination of inpatient and outpatients

Figure 25<sup>1</sup>: Prevalence of Hepatitis B by Measurement Type<sup>7,44-47</sup>



<sup>1</sup>Each study may be represented by more than one prevalence estimate

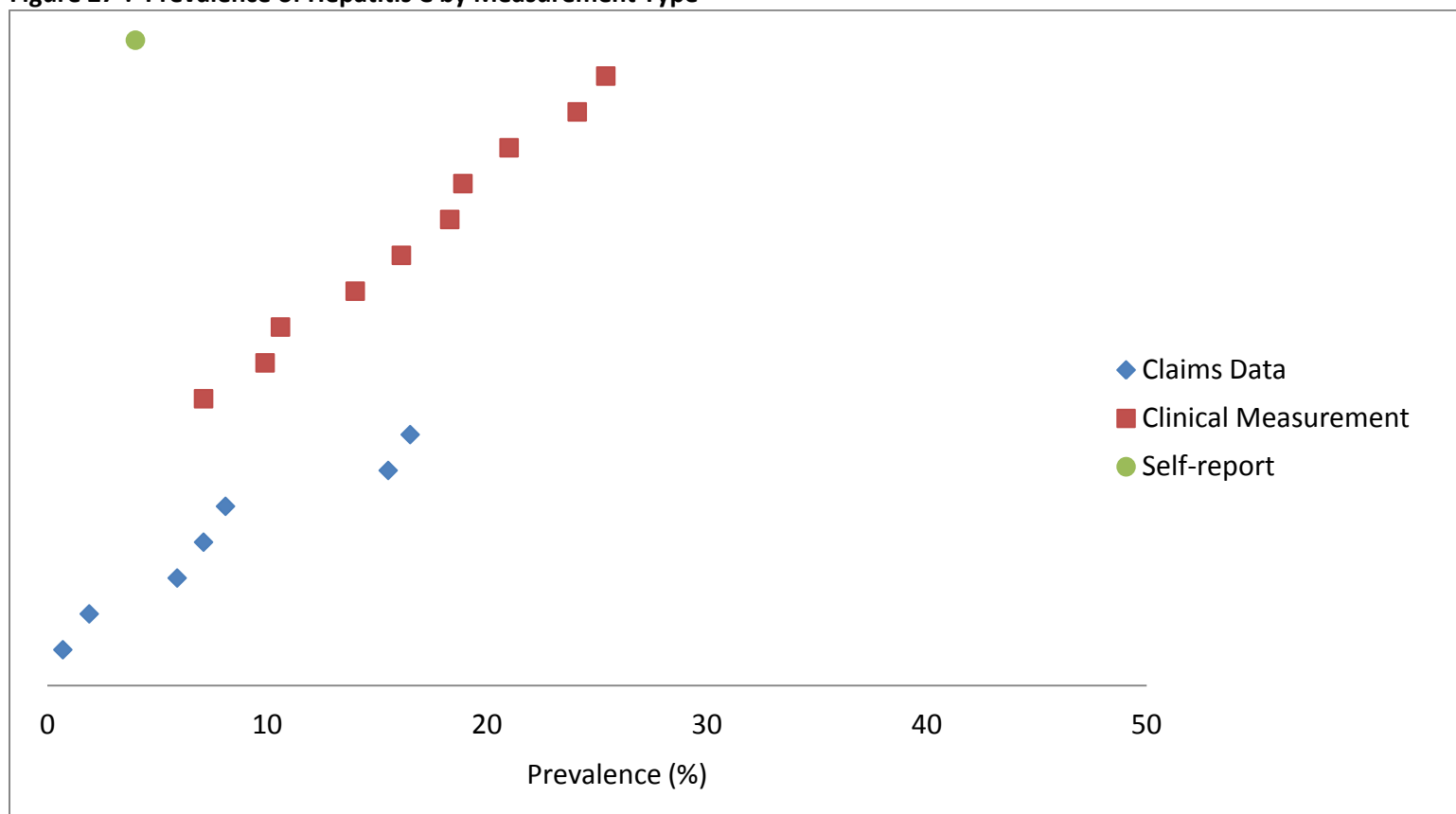
Figure 26<sup>1</sup>: Prevalence of Hepatitis B by Population<sup>7,44-47</sup>



<sup>1</sup>Each study may be represented by more than one prevalence estimate

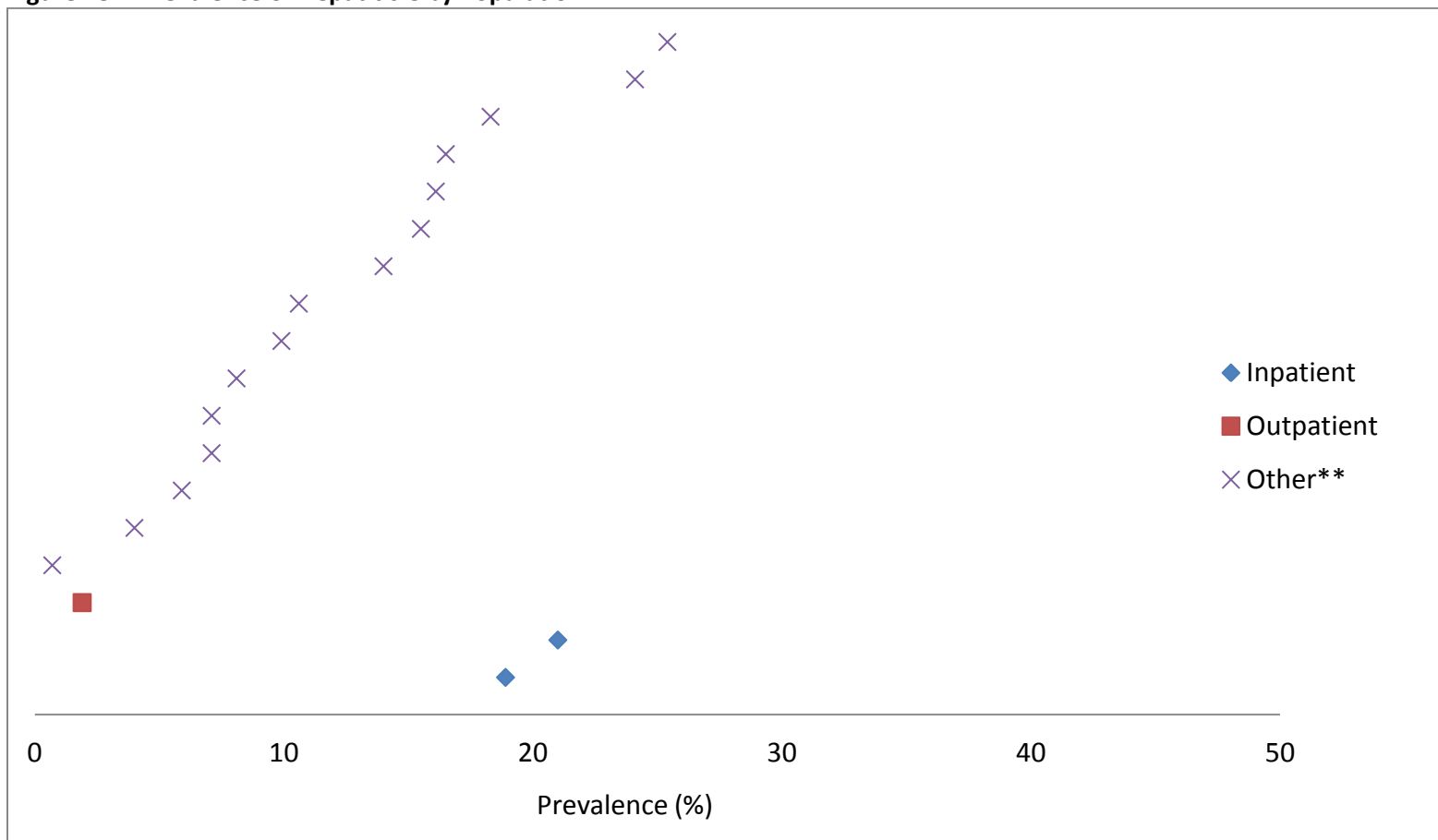
\*\* Other is defined as a mix of categorical populations, e.g. a combination of inpatient and outpatients

Figure 27<sup>1</sup>: Prevalence of Hepatitis C by Measurement Type<sup>7,18,20,27,43,44,46-53</sup>



<sup>1</sup>Each study may be represented by more than one prevalence estimate

Figure 28<sup>1</sup>: Prevalence of Hepatitis C by Population<sup>7,18,20,27,43,44,46-53</sup>

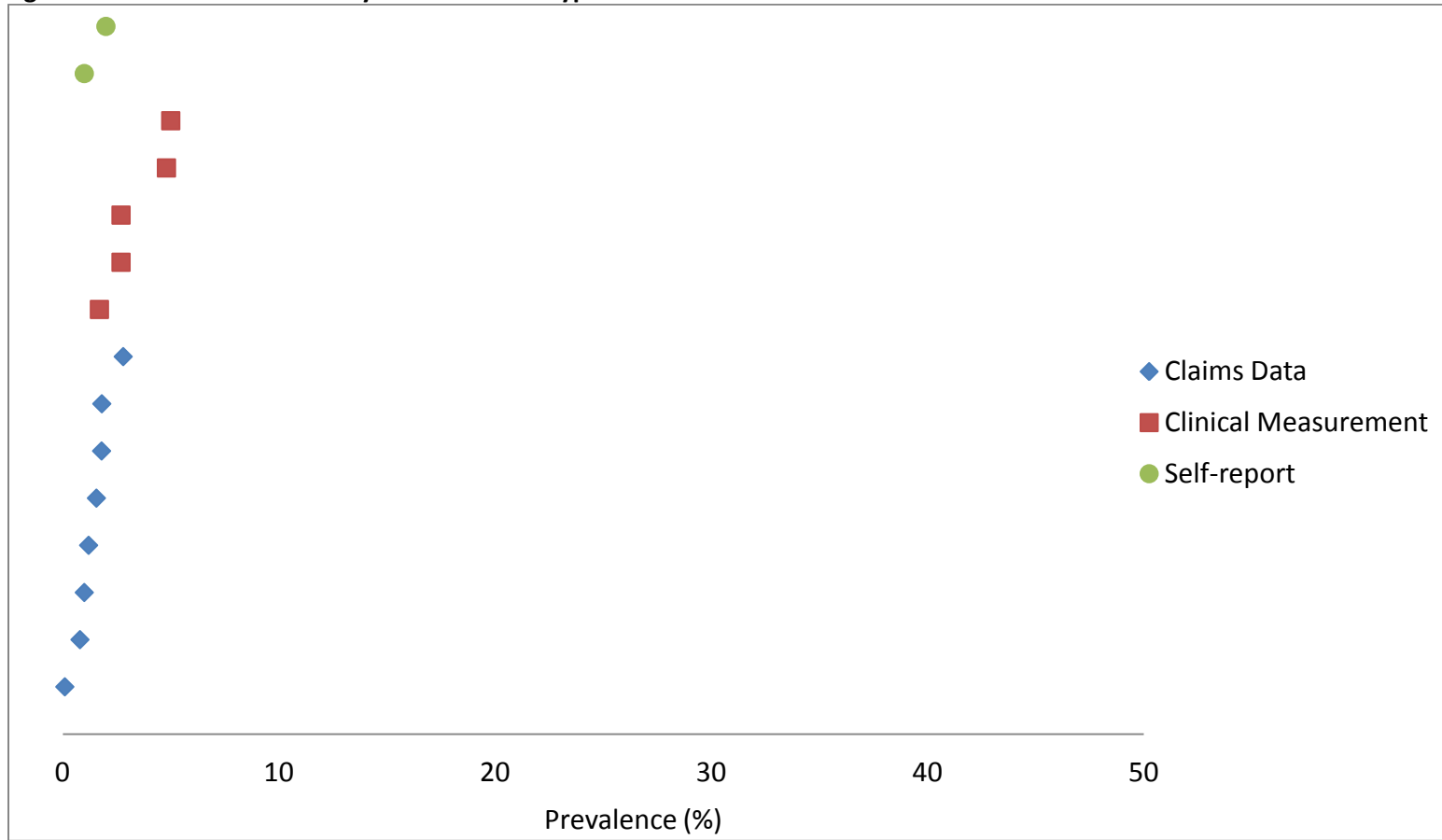


<sup>1</sup>Each study may be represented by more than one prevalence estimate

\*\* Other is defined as a mix of categorical populations, e.g. a combination of inpatient and outpatients

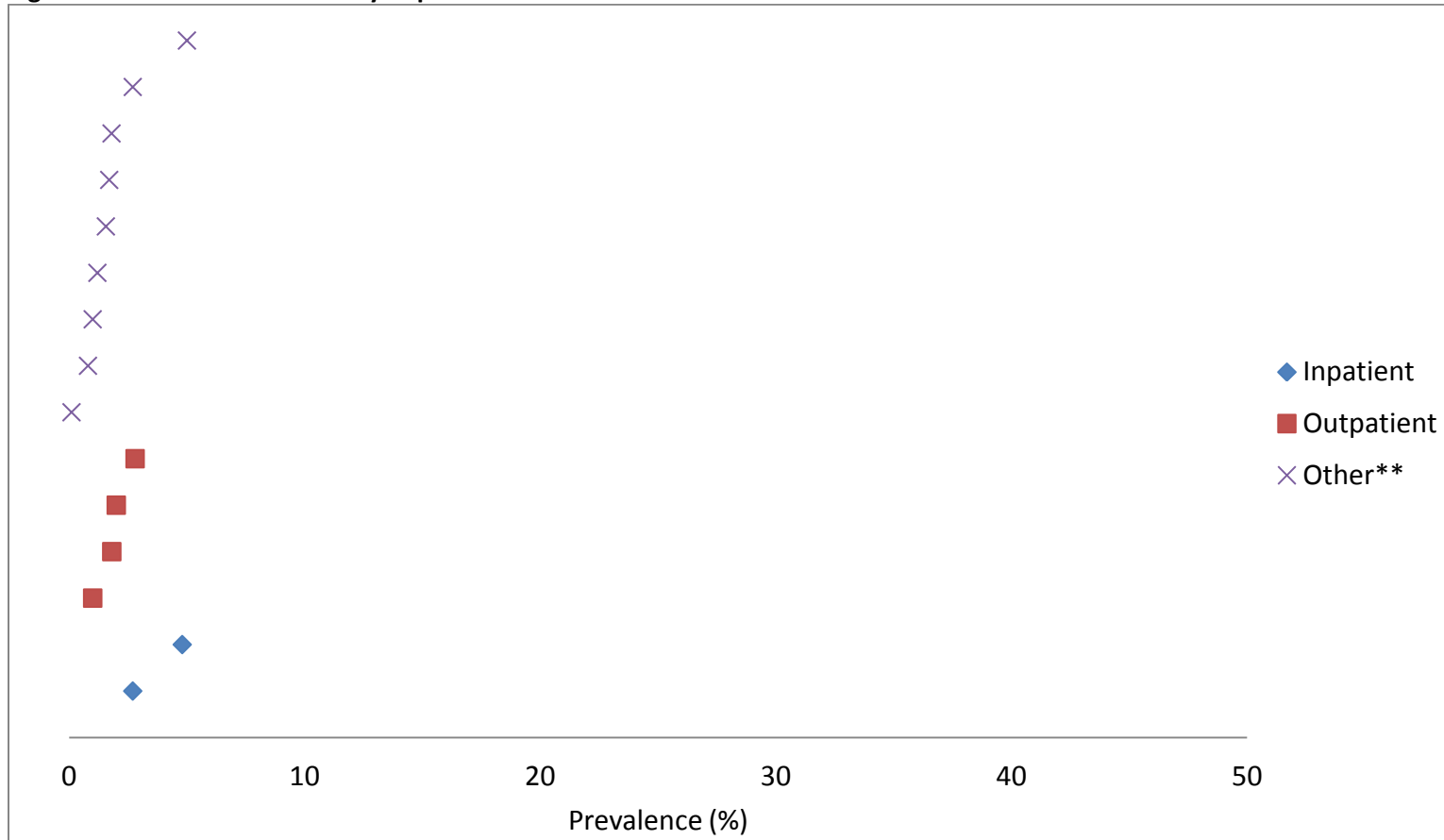


Figure 29<sup>1</sup>: Prevalence of HIV by Measurement Type<sup>18,20,27,31,43,45,46,52,54-57</sup>



<sup>1</sup>Each study may be represented by more than one prevalence estimate

Figure 30<sup>1</sup>: Prevalence of HIV by Population <sup>18,20,27,31,43,45,46,52,54-57</sup>



<sup>1</sup>Each study may be represented by more than one prevalence estimate

\*\*Other is defined as a mix of categorical populations, e.g. a combination of inpatient and outpatients

**Appendix C, cont.: Figure References**

1. Bell RC, Farmer S, Ries R, Srebnik D. Metabolic risk factors among medicaid outpatients with schizophrenia receiving second-generation antipsychotics. *Psychiatric services (Washington, D.C.)*. Dec 2009;60(12):1686-1689.
2. Chwastiak LA, Rosenheck RA, McEvoy M, et al. The impact of obesity on health care costs among persons with schizophrenia. *General Hospital Psychiatry*. Jan-Feb 2009;31(1):1-7.
3. Conley RR, Shim J-C, Kelly DL, Feldman S, Yu Y, McMahon RP. Cardiovascular disease in relation to weight in deceased persons with schizophrenia. *Comprehensive Psychiatry*. 2005;46(6):460-467.
4. Correll CU, Druss BG, Lombardo I, et al. Findings of a U.S. national cardiometabolic screening program among 10,084 psychiatric outpatients. *Psychiatric services (Washington, D.C.)*. Sep 2010;61(9):892-898.
5. Correll CU, Frederickson AM, Kane JM, Manu P. Equally increased risk for metabolic syndrome in patients with bipolar disorder and schizophrenia treated with second-generation antipsychotics. *Bipolar disorders*. Nov 2008;10(7):788-797.
6. McElroy SL, Frye MA, Suppes T, et al. Correlates of overweight and obesity in 644 patients with bipolar disorder. *Journal of Clinical Psychiatry*. // 2002;63(3):207-213.
7. Rothbard AB, Blank MB, Staab JP, et al. Previously undetected metabolic syndromes and infectious diseases among psychiatric inpatients. *Psychiatric services (Washington, D.C.)*. Apr 2009;60(4):534-537.
8. Susce MT, Villanueva N, Diaz FJ, de Leon J. Obesity and associated complications in patients with severe mental illnesses: a cross-sectional survey. *The Journal of clinical psychiatry*. Feb 2005;66(2):167-173.
9. Wang PW, Sachs GS, Zarate CA, et al. Overweight and obesity in bipolar disorders. *Journal of psychiatric research*. Dec 2006;40(8):762-764.
10. Daumit GL, Goldberg RW, Anthony C, et al. Physical activity patterns in adults with severe mental illness. *The Journal of nervous and mental disease*. Oct 2005;193(10):641-646.
11. Fiedorowicz JG, Palagummi NM, Forman-Hoffman VL, Miller DD, Haynes WG. Elevated prevalence of obesity, metabolic syndrome, and cardiovascular risk factors in bipolar disorder. *Annals of clinical psychiatry : official journal of the American Academy of Clinical Psychiatrists*. Jul-Sep 2008;20(3):131-137.
12. Goldstein BI, Liu SM, Zivkovic N, Schaffer A, Chien LC, Blanco C. The burden of obesity among adults with bipolar disorder in the United States. *Bipolar disorders*. Jun 2011;13(4):387-395.
13. Morden NE, Lai Z, Goodrich DE, et al. Eight-year trends of cardiometabolic morbidity and mortality in patients with schizophrenia. *Gen Hosp Psychiatry*. Jul-Aug 2012;34(4):368-379.

14. Regenold WT, Thapar RK, Marano C, Gavirneni S, Kondapavuluru PV. Increased prevalence of type 2 diabetes mellitus among psychiatric inpatients with bipolar I affective and schizoaffective disorders independent of psychotropic drug use. *Journal of affective disorders*. Jun 2002;70(1):19-26.
15. Chwastiak LA, H MP, Rosenheck RA, Kazis LE, D S. Association of psychiatric illness and obesity, physical inactivity, and smoking among a national sample of veterans. *Psychosomatics: Journal of Consultation Liaison Psychiatry*. 2011;52(3):230-236.
16. Goldstein BI, Fagiolini A, Houck P, Kupfer DJ. Cardiovascular disease and hypertension among adults with bipolar I disorder in the United States. *Bipolar disorders*. Sep 2009;11(6):657-662.
17. Kilbourne AM, Brar JS, Drayer RA, Xu X, Post EP. Cardiovascular disease and metabolic risk factors in male patients with schizophrenia, schizoaffective disorder, and bipolar disorder. *Psychosomatics*. Sep-Oct 2007;48(5):412-417.
18. Carney CP, Jones LE. Medical comorbidity in women and men with bipolar disorders: a population-based controlled study. *Psychosomatic medicine*. Sep-Oct 2006;68(5):684-691.
19. Carney CP, Jones L, Woolson RF. Medical comorbidity in women and men with schizophrenia: a population-based controlled study. *Journal of general internal medicine*. Nov 2006;21(11):1133-1137.
20. Kilbourne AM, Cornelius JR, Han X, et al. Burden of general medical conditions among individuals with bipolar disorder. *Bipolar disorders*. Oct 2004;6(5):368-373.
21. Kilbourne AM, Morden NE, Austin K, et al. Excess heart-disease-related mortality in a national study of patients with mental disorders: identifying modifiable risk factors. *Gen Hosp Psychiatry*. Nov-Dec 2009;31(6):555-563.
22. Duncan E, Dunlop BW, Boshoven W, Woolson SL, Hamer RM, Phillips LS. Relative risk of glucose elevation during antipsychotic exposure in a Veterans Administration population. *International Clinical Psychopharmacology*. // 2007;22(1):1-11.
23. Levine J, Chengappa KN, Patel A, et al. Obesity and medical illnesses in psychiatric patients admitted to a long-term psychiatric facility. *Journal of psychiatric practice*. Nov 2001;7(6):432-439.
24. Duncan EJ, Woolson SL, Hamer RM, Dunlop BW. Risk of lipid abnormality with haloperidol, olanzapine, quetiapine, and risperidone in a veterans affairs population. *International Clinical Psychopharmacology*. // 2009;24(4):204-213.
25. Barner JC, Worchel J, Yang M. Frequency of new-onset diabetes mellitus and use of antipsychotic drugs among Central Texas veterans. *Pharmacotherapy*. // 2004;24(11):1529-1538.
26. de Leon J, Susce MT, Johnson M, et al. A clinical study of the association of antipsychotics with hyperlipidemia. *Schizophrenia Research*. 2007;92(1-3):95-102.
27. Chwastiak LA, Rosenheck RA, McEvoy JP, Keefe RS, Swartz MS, Lieberman JA. Interrelationships of psychiatric symptom severity, medical comorbidity, and functioning in schizophrenia. *Psychiatric Services*. Aug 2006;57(8):1102-1109.

28. Argo T, Carnahan R, Barnett M, Holman TL, Perry PJ. Diabetes prevalence estimates in schizophrenia and risk factor assessment. *Annals of clinical psychiatry : official journal of the American Academy of Clinical Psychiatrists*. May 2011;23(2):117-124.
29. Dickey B, Normand SLT, Weiss RD, Drake RE, Azeni H. Medical morbidity, mental illness, and substance use disorders. *Psychiatric Services*. Jul 2002;53(7):861-867.
30. Weber NS, Cowan DN, Millikan AM, Niebuhr DW. Psychiatric and general medical conditions comorbid with schizophrenia in the National Hospital Discharge Survey. *Psychiatric services (Washington, D.C.)*. Aug 2009;60(8):1059-1067.
31. Chafetz L, White MC, Collins-Bride G, Nickens J. The poor general health of the severely mentally ill: Impact of schizophrenic diagnosis. *Community Mental Health Journal*. // 2005;41(2):169-184.
32. Correll CU, Frederickson AM, Kane JM, Manu P. Does antipsychotic polypharmacy increase the risk for metabolic syndrome? *Schizophr Res*. Jan 2007;89(1-3):91-100.
33. Sokal J, Messias E, Dickerson FB, et al. Comorbidity of medical illnesses among adults with serious mental illness who are receiving community psychiatric services. *The Journal of nervous and mental disease*. Jun 2004;192(6):421-427.
34. Goff DC, Sullivan LM, McEvoy JP, et al. A comparison of ten-year cardiac risk estimates in schizophrenia patients from the CATIE study and matched controls. *Schizophr Res*. Dec 1 2005;80(1):45-53.
35. Daumit GL, Goff DC, Meyer JM, et al. Antipsychotic effects on estimated 10-year coronary heart disease risk in the CATIE schizophrenia study. *Schizophr Res*. Oct 2008;105(1-3):175-187.
36. McEvoy JP, Meyer JM, Goff DC, et al. Prevalence of the metabolic syndrome in patients with schizophrenia: Baseline results from the Clinical Antipsychotic Trials of Intervention Effectiveness (CATIE) Schizophrenia Trial and comparison with national estimates from NHANES III. *Schizophrenia Research*. Dec 2005;80(1):19-32.
37. Perron BE, Howard MO, Nienhuis JK, Bauer MS, Woodward AT, Kilbourne AM. Prevalence and Burden of General Medical Conditions Among Adults With Bipolar I Disorder: Results From the National Epidemiologic Survey on Alcohol and Related Conditions. *Journal of Clinical Psychiatry*. Oct 2009;70(10):1407-1415.
38. Dixon L, Medoff DR, Wohlheiter K, et al. Correlates of severity of smoking among persons with severe mental illness. *The American journal on addictions / American Academy of Psychiatrists in Alcoholism and Addictions*. Mar-Apr 2007;16(2):101-110.
39. Atlantis E, Shi Z, Penninx BJWH, Wittert GA, Taylor A, Almeida OP. Chronic medical conditions mediate the association between depression and cardiovascular disease mortality. *Social Psychiatry and Psychiatric Epidemiology*. 2012;47(4):615-625.
40. Lambert MT, Copeland LA, Sampson N, Duffy SA. New-onset type-2 diabetes associated with atypical antipsychotic medications. *Progress in neuro-psychopharmacology & biological psychiatry*. Jul 2006;30(5):919-923.

41. Correll CU, Kane JM, Manu P. Identification of high-risk coronary heart disease patients receiving atypical antipsychotics: single low-density lipoprotein cholesterol threshold or complex national standard? *The Journal of clinical psychiatry*. Apr 2008;69(4):578-583.
42. McDermott S, Moran R, Platt T, Isaac T, Wood H, Dasari S. Heart disease, schizophrenia, and affective psychoses: epidemiology of risk in primary care. *Community Ment Health J*. Dec 2005;41(6):747-755.
43. Beyer J, Kuchibhatla M, Gersing K, Krishnan KRR. Medical Comorbidity in a Bipolar Outpatient Clinical Population. *Neuropsychopharmacology*. 2005;30(2):401-404.
44. Butterfield MI, Bosworth HB, Stechuchak KM, et al. Racial differences in hepatitis B and hepatitis C and associated risk behaviors in veterans with severe mental illness. *Journal of the National Medical Association*. Jan 2004;96(1):43-52.
45. Meyer JM. Prevalence of hepatitis A, hepatitis B, and HIV among hepatitis C-seropositive state hospital patients: results from Oregon State Hospital. *The Journal of clinical psychiatry*. May 2003;64(5):540-545.
46. Rosenberg SD, Goodman LA, Osher FC, et al. Prevalence of HIV, hepatitis B, and hepatitis C in people with severe mental illness. *American journal of public health*. Jan 2001;91(1):31-37.
47. Rosenberg SD, Drake RE, Brunette MF, Wolford GL, Marsh BJ. Hepatitis C virus and HIV co-infection in people with severe mental illness and substance use disorders. *AIDS (London, England)*. Oct 2005;19 Suppl 3:S26-33.
48. Butterfield MI, Bosworth HB, Meador KG, et al. Gender Differences in Hepatitis C Infection and Risks Among Persons With Severe Mental Illness. *Psychiatric Services*. 2003;54(6):848-853.
49. Osher FC, Goldberg RW, McNary SW, et al. Substance Abuse and the Transmission of Hepatitis C Among Persons With Severe Mental Illness. *Psychiatric Services*. 2003;54(6):842-847.
50. Matthews AM, Huckans MS, Blackwell AD, Hauser P. Hepatitis C testing and infection rates in bipolar patients with and without comorbid substance use disorders. *Bipolar disorders*. Mar 2008;10(2):266-270.
51. Huckans MS, Blackwell AD, Harms TA, Hauser P. Management of Hepatitis C Disease Among VA Patients With Schizophrenia and Substance Use Disorders. *Psychiatric Services*. 2006;57(3):403-406.
52. Himelhoch S, McCarthy JF, Ganoczy D, Medoff D, Dixon LB, Blow FCB. Understanding associations between serious mental illness and HIV among patients in the VA health system. *Psychiatric Services*. 2007;58(9):1165-1172.
53. Fuller BE, Rodriguez VL, Linke A, Sikirica M, Dirani R, Hauser P. Prevalence of liver disease in veterans with bipolar disorder or schizophrenia. *Gen Hosp Psychiatry*. May-Jun 2011;33(3):232-237.
54. Carey MP, Carey KB, Maisto SA, Schroder KE, Venable PA, Gordon CM. HIV risk behavior among psychiatric outpatients: association with psychiatric disorder, substance use disorder, and gender. *The Journal of nervous and mental disease*. Apr 2004;192(4):289-296.
55. Walkup JT, Akincigil A, Amin S, Hoover D, Siegel M, Crystal S. Prevalence of diagnosed HIV disease among medicaid beneficiaries with schizophrenia in U.S. metropolitan areas. *The Journal of nervous and mental disease*. Sep 2010;198(9):682-686.

56. Walkup J, Akincigil A, Hoover DR, Siegel MJ, Amin S, Crystal S. Use of Medicaid data to explore community characteristics associated with HIV prevalence among beneficiaries with schizophrenia. *Public health reports (Washington, D.C. : 1974)*. Sep-Oct 2011;126 Suppl 3:89-101.
57. Blank MB, Mandell DS, Aiken L, Hadley TR. Co-occurrence of HIV and serious mental illness among Medicaid recipients. *Psychiatric services (Washington, D.C.)*. Jul 2002;53(7):868-873.