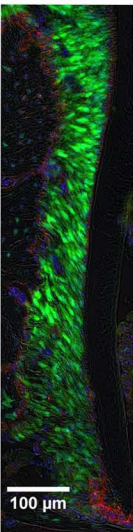


3 Weeks

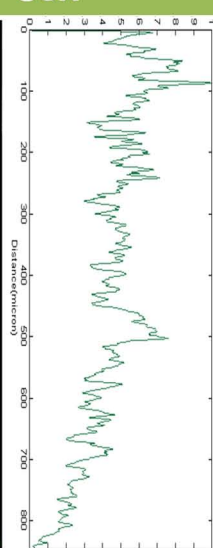
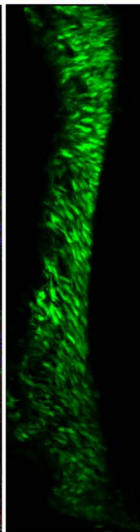
Coronal

Apical

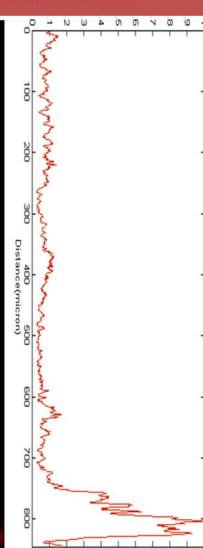
SCX/NG2/DAPI



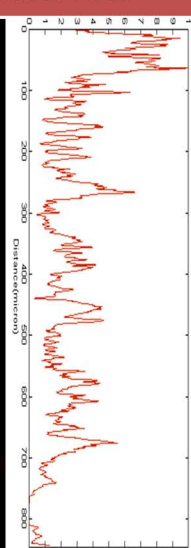
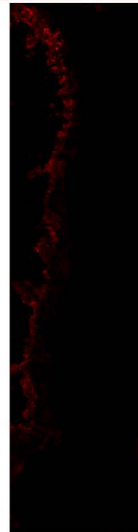
SCX



NG2 at C-PDL



NG2 at B-PDL

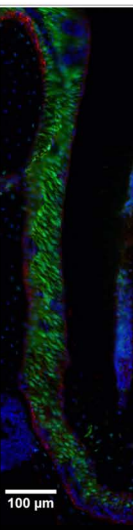


3 Months

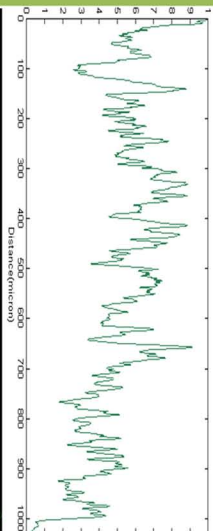
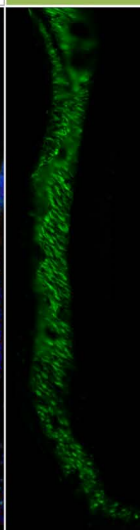
Coronal

Apical

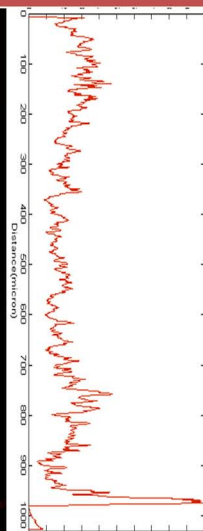
SCX/NG2/DAPI



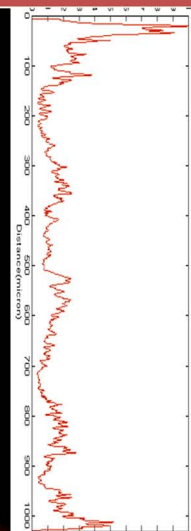
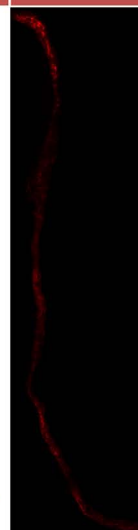
SCX

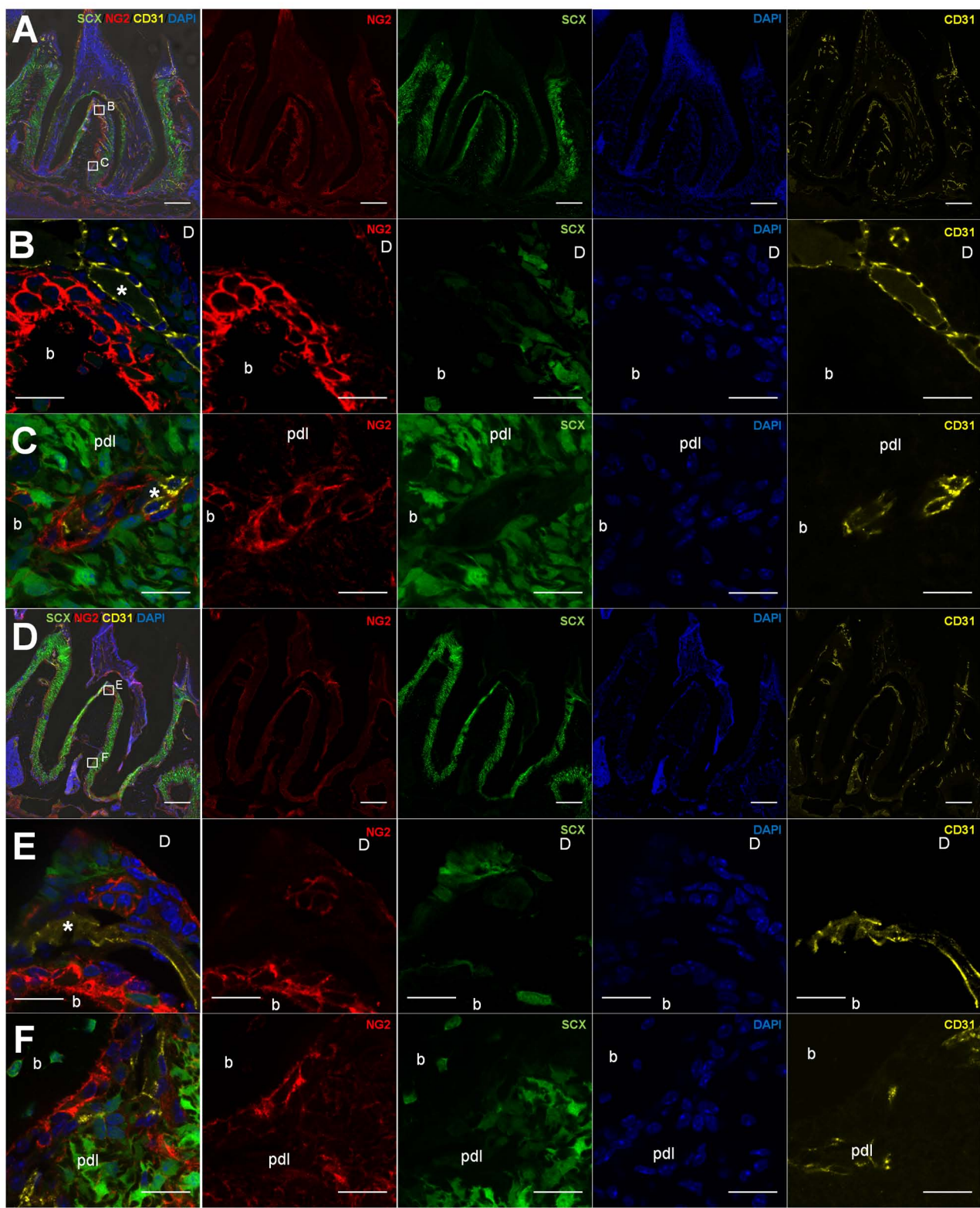


NG2 at C-PDL

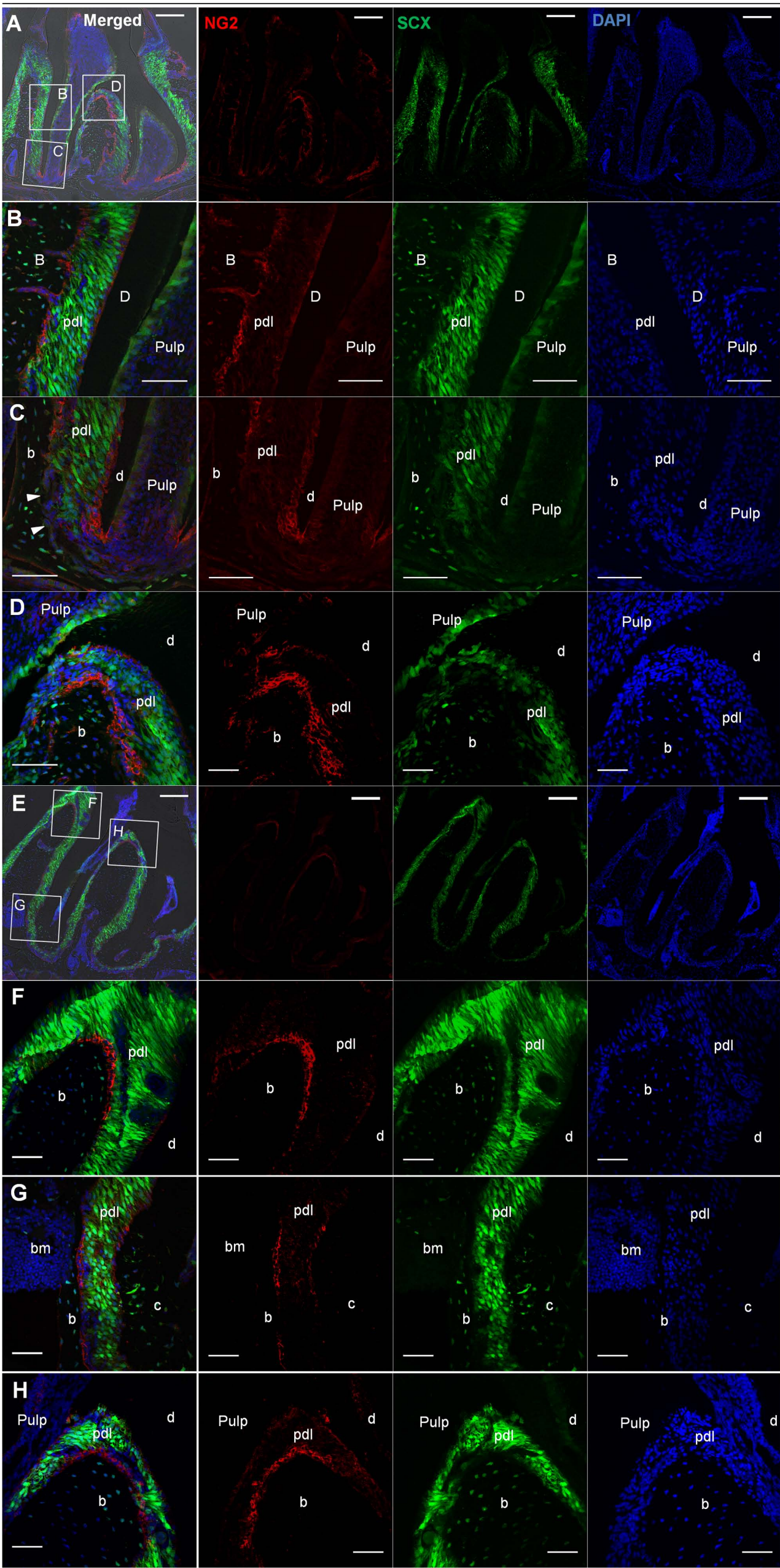


NG2 at B-PDL

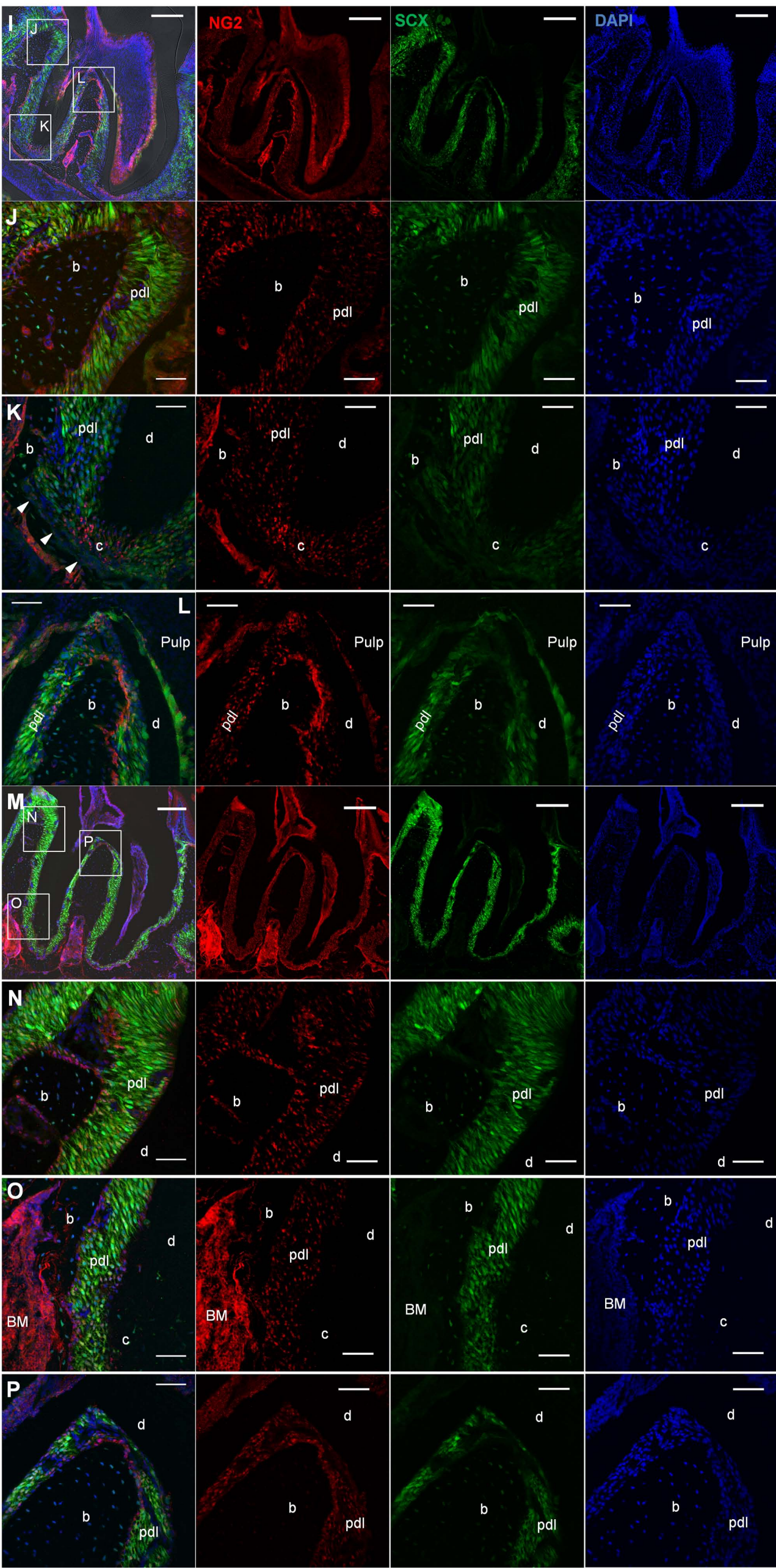


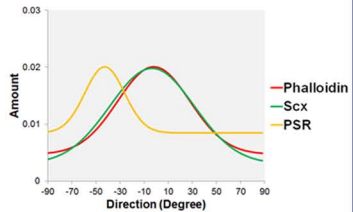
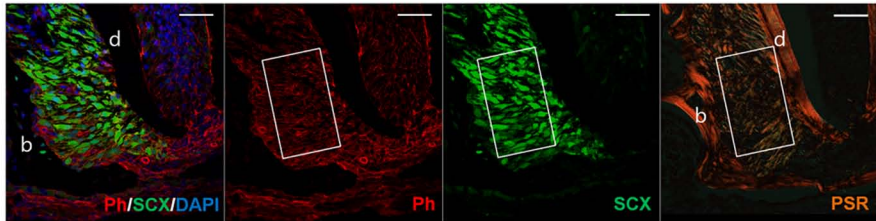
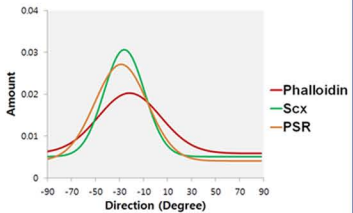
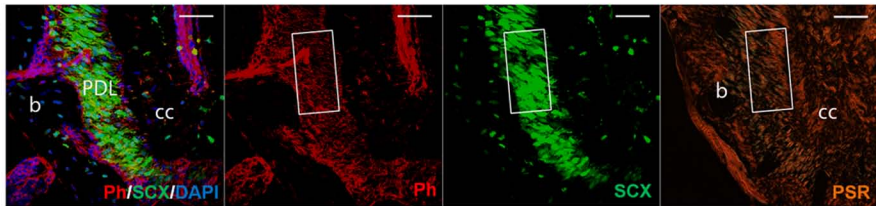


NG2/SCX/DAPI

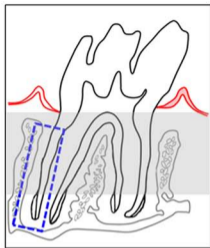


OSX/SCX/DAPI

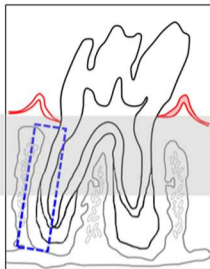


A**B**

3 Weeks



3 Months



↑ Coronal (C)
↓ Apical (A)

B-PDL		C-PDL	
C	A	C	A
+	-	+	+
+	-	+	+
+	-	+	-
+	+	+	-
+	-	+	-

NG2

Osx

Scx

BSP

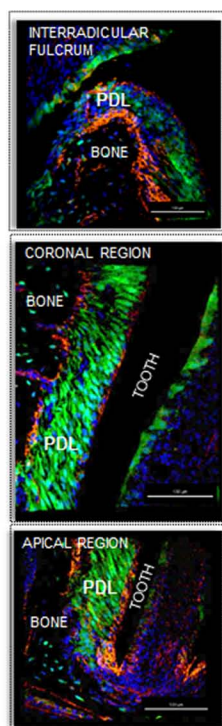
PSR

B-PDL		C-PDL	
C	A	C	A
+	+	+	+
+	+	+	-
+	+	+	+
+	-	+	-
+	+	+	+

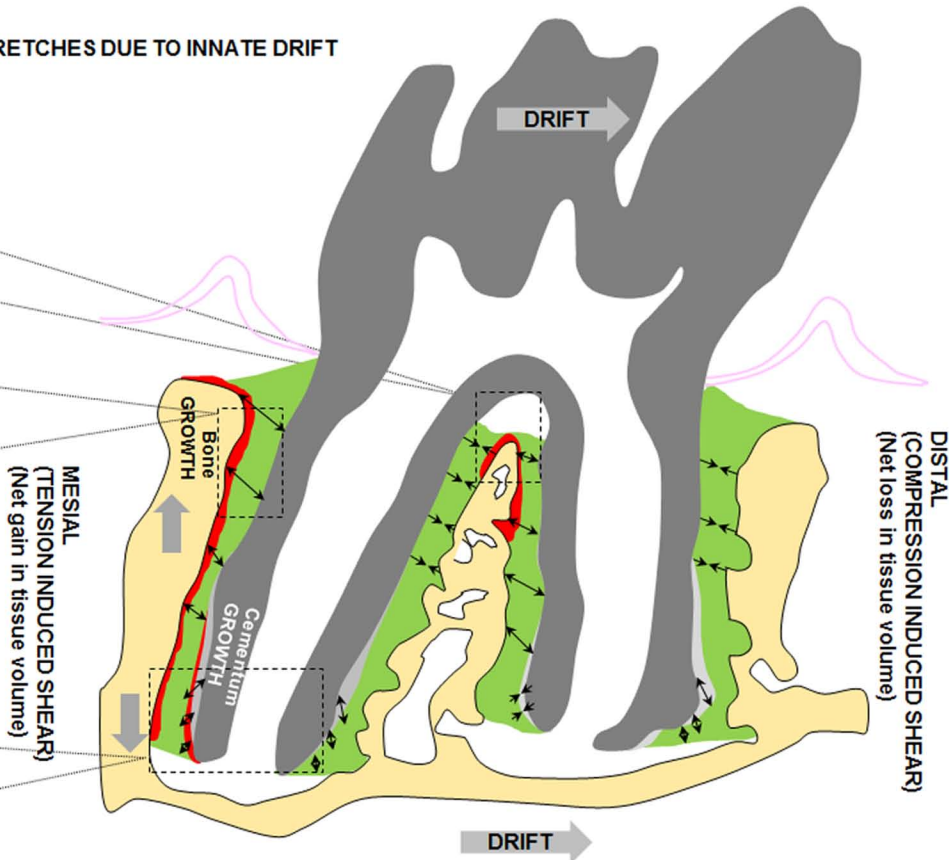
B-PDL: Bone to PDL enthesis, C-PDL: Cementum to PDL enthesis

3 WEEK OLD

DOMINANT PASSIVE STRETCHES DUE TO INNATE DRIFT

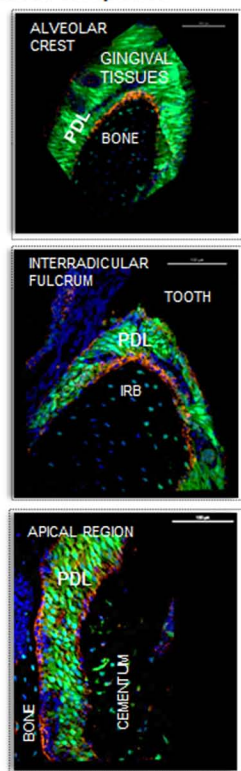


Scale bar: 50 μ m



3 MONTH OLD

ACTIVE STRETCHES: Function-mediated moment at the interradicular bone accentuates stretches in the mesial and distal complexes



Scale bar: 50 μ m

