

# **NES1/KLK10 gene represses proliferation, enhances apoptosis and down-regulates glucose metabolism of PC3 prostate cancer cells**

Running Title: NES1/KLK10 suppress PC3

Jiajia Hu<sup>1</sup>, Hu Lei<sup>2</sup>, Xiaochun Fei<sup>3</sup>, Sheng Liang<sup>4</sup>, Hanzhang Xu<sup>2</sup>, Dongjun Qin<sup>2</sup>, Yue Wang<sup>1</sup>, Yingli Wu<sup>2\*</sup>, and Biao Li<sup>1\*</sup>

## **Supplemental figure legends:**

### **Supplemental figure 1**

(A: I-IV) Bax protein expression in PC3-KLK10 and PC3-Vector xenograft tissues measured by immunohistochemistry was similar. (B and C) WB showed that the cleaved Caspase-3 and PARP proteins in PC3-KLK10 cell line were not detected. (D: I-II) Plots and data of flow cytometry in PC3-KLK10 and PC3-Vector cell lines for Figure 4-A.

### **Supplemental figure 2**

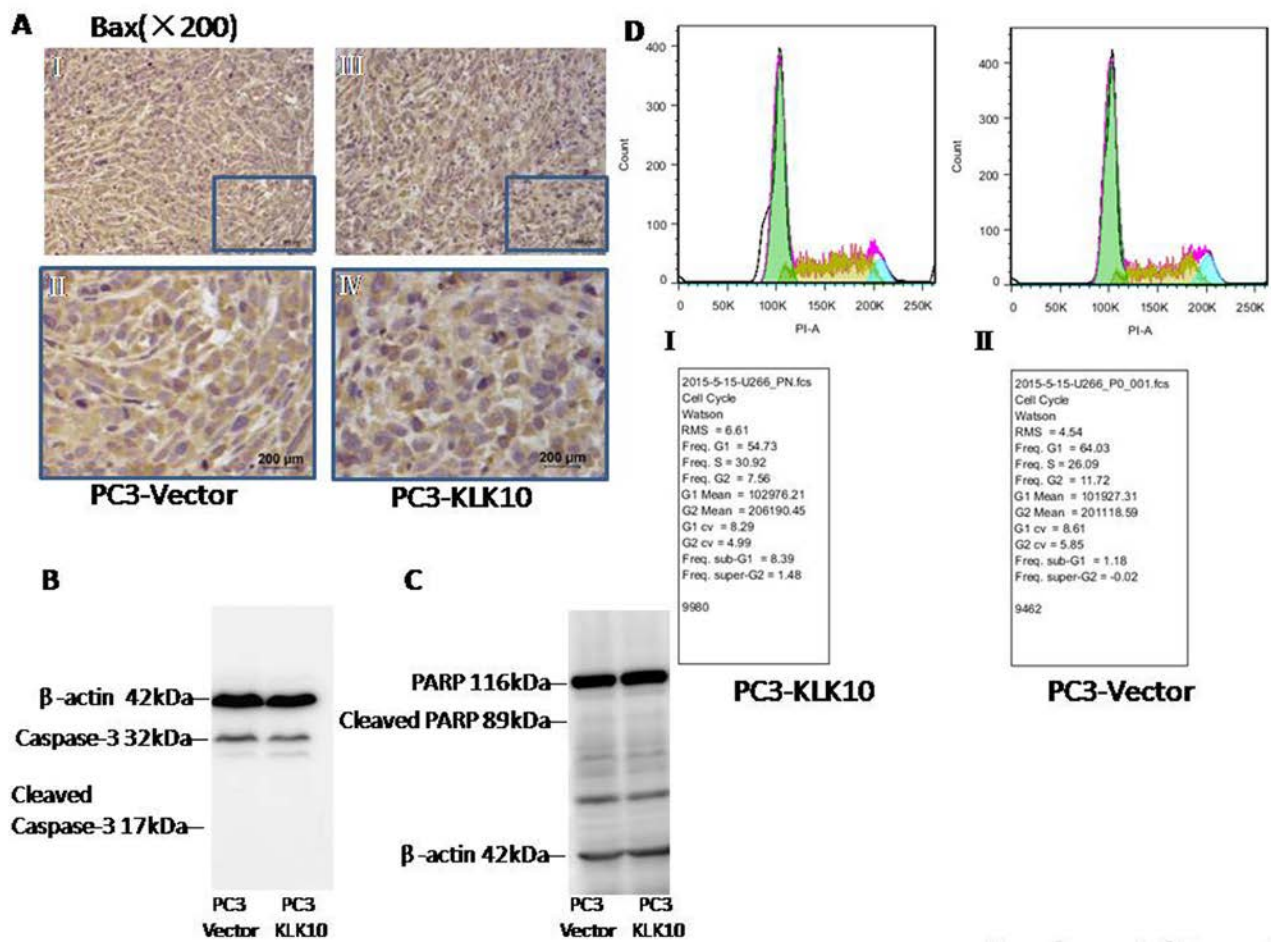
(A) Marker of western blotting. (B) Full-length blots of KLK10 protein in RWPE-1, PC3, DU145, LNCaP clone FGC for Figure 1-C; full-length blots of KLK10 protein in PC3, PC3-Vector and PC3-KLK10 for Figure 2-B. (C) Full-length blots of Bcl-2 protein in PC3, PC3-Vector and PC3-KLK10 for Figure 4-D. (D) Full-length blots of Bax protein in PC3-Vector and PC3-KLK10 for Figure 4-D. (E) Full-length blots of HK-2 protein in PC3-Vector and PC3-KLK10 for Figure 5-D. The  $\beta$ -actin protein is as same as one in (D).

### **Supplemental figure 3**

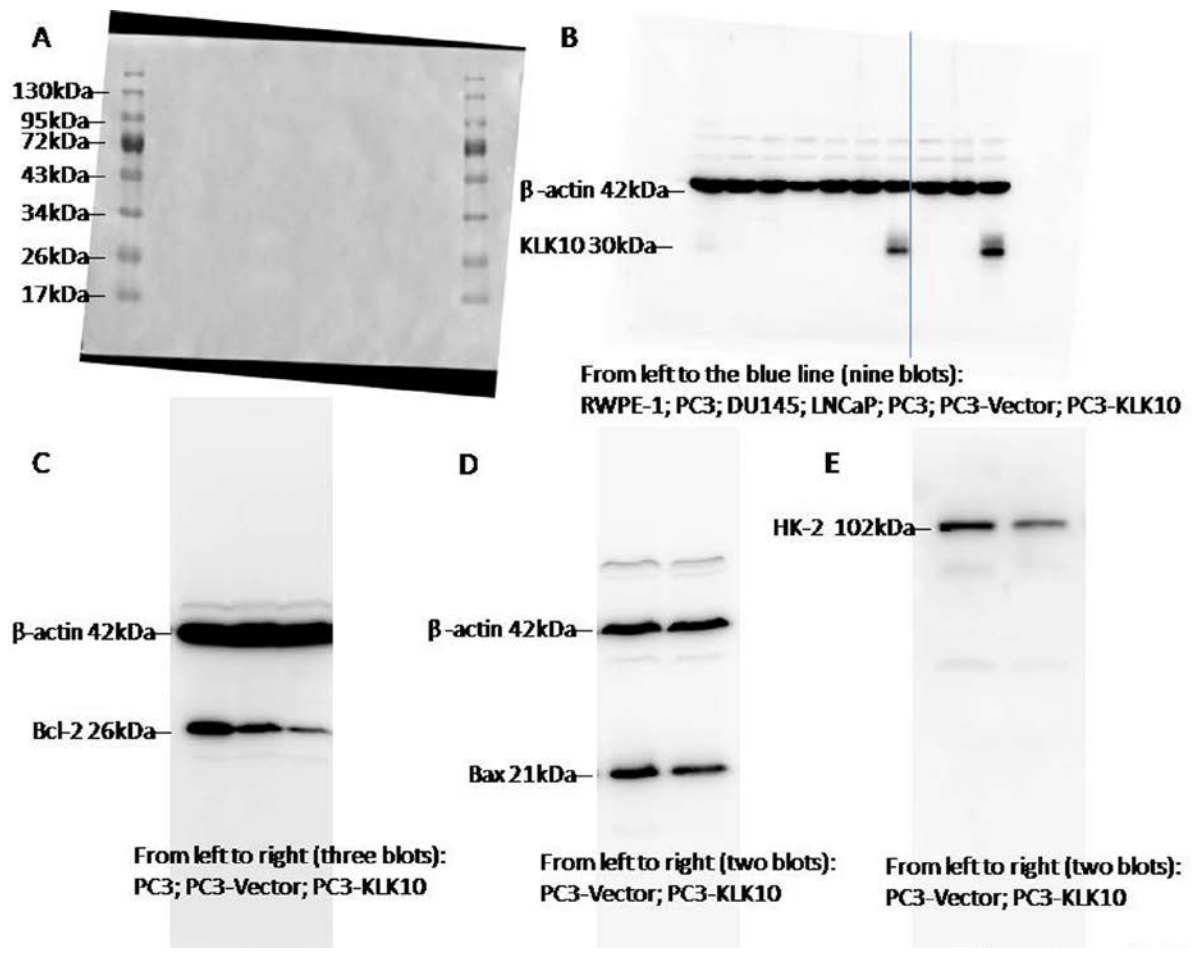
(A) Full-length blots of total and cleaved Caspase-3 protein in PC3-Vector and

PC3-KLK10. The cleaved Caspase-3 protein in PC3-KLK10 was not detected. (B) Full-length blots of total and cleaved PARP protein in PC3-Vector and PC3-KLK10. The cleaved PARP protein in PC3-KLK10 was not detected. (C) Full-length blots of HK-2 protein in PC3-KLK10+HK-2 and PC3-KLK10+Vector for Figure 6-C. (D) Full-length blots of KLK10 protein in PC3-KLK10+HK-2 and PC3-KLK10+Vector for Figure 6-C. (E) Full-length blots of Bcl-2 protein in PC3-KLK10+HK-2 and PC3-KLK10+Vector for Figure 6-C. (F) Full-length blots of Bcl-2 protein in PC3-KLK10+Vector and PC3-KLK10+Bcl-2 for Figure 6-B. (F) Full-length blots of HK-2 protein in PC3-KLK10+Vector and PC3-KLK10+Bcl-2 for Figure 6-B. (G) Full-length blots of KLK10 protein in PC3-KLK10+Vector and PC3-KLK10+Bcl-2 for Figure 6-B.

Supplemental figure 1:



## Supplemental figure 2



### Supplemental figure 3

