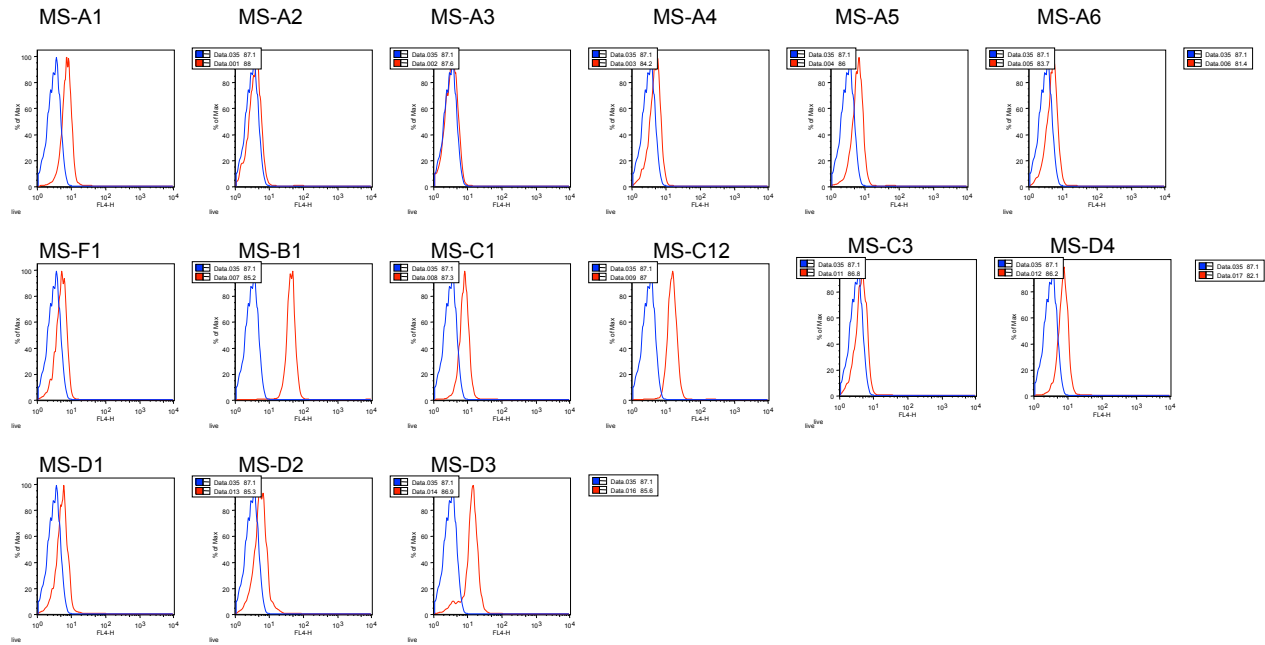


Supplementary Figure 3. MS and control-derived rIgG binding to permeabilized a human oligodendrocyte cells. Binding of MS (A) or control-derived (B) rIgG to a human oligodendrocyte cell line (HOG) to evaluate intracellular binding. The blue histograms show secondary antibody alone and the red show rIgG with the addition of the secondary antibody.

A.



B.

