

Figures and Tables to Accompany "How Complete Are Our Clerkings? A clinical audit at a district general hospital in Kent."

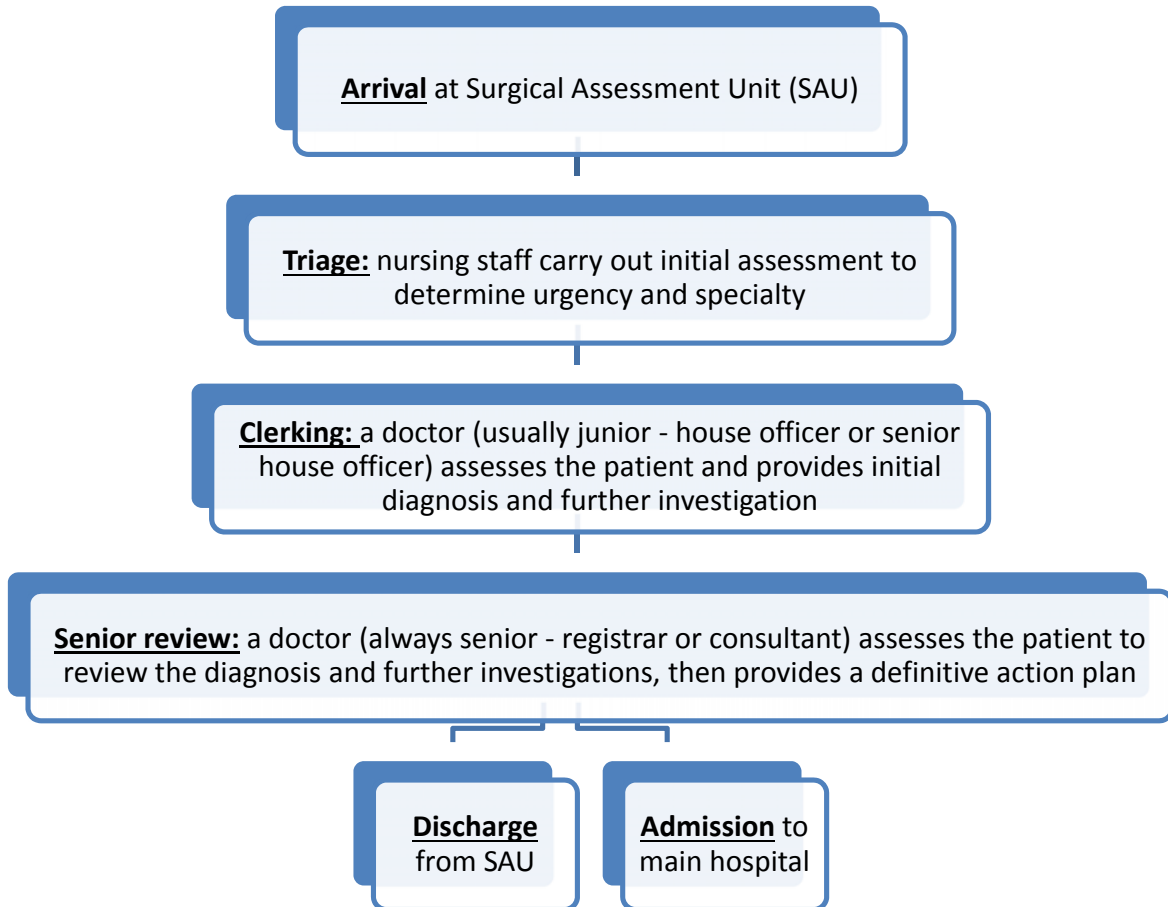


Figure 1: An example patient pathway through the surgical assessment unit

Table 1: Proportions of data recorded between cycles 1 and 2

	cycle	N	Mean
Allergy	First cycle	170	.74
	Second cycle	150	.69
Drug	First cycle	170	.76
	Second cycle	150	.88
Doses	First cycle	170	.49
	Second cycle	150	.70
Social	First cycle	170	.46
	Second cycle	150	.71
NBM	First cycle	170	.58
	Second cycle	150	.74

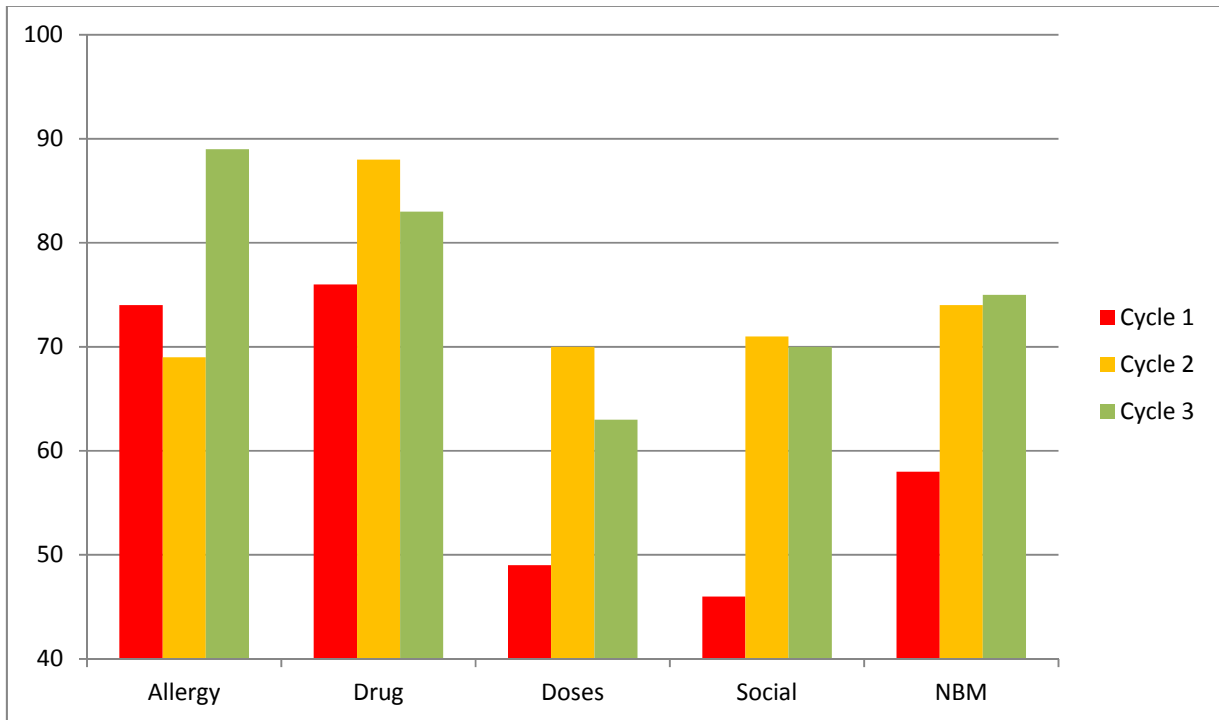


Figure 2: Proportions of data recorded during all cycles in graphical form

Table 2: Statistical significance of the differences in Table 1

Cycle 1 to 2		Independent Samples Test									
		Allergy		Drug		Doses		Social		NBM	
		Equal variances assumed	Equal variances not assumed	Equal variances assumed	Equal variances not assumed	Equal variances assumed	Equal variances not assumed	Equal variances assumed	Equal variances not assumed	Equal variances assumed	Equal variances not assumed
t		1.077	1.073	-2.694	-2.738	-3.919	-3.941	-4.634	-4.662	-2.995	-3.017
df		318	307.693	318	312.049	318	317.516	318	317.752	318	317.976
t-test for	Sig. (2-tailed)	.282	.284	.007	.007	.000	.000	.000	.000	.003	.003
Equality of Means	Mean Difference	.055	.055	-.115	-.115	-.212	-.212	-.249	-.249	-.158	-.158
	Std. Error Difference	.051	.051	.043	.042	.054	.054	.054	.053	.053	.052
	95% Confidence Interval Lower of the Difference	-.045	-.045	-.200	-.198	-.318	-.317	-.354	-.354	-.261	-.260
	Upper	.154	.154	-.031	-.032	-.105	-.106	-.143	-.144	-.054	-.055

Table 3: Percentage of data recorded by grade of doctor in cycle 2

Grade of doctor	Percentage items recorded (number of clerkings)
House officer	82.0% (48)
Senior house officer	78.6% (83)
Registrar	36.8% (19)

Table 4: Proportions of data recorded between cycles 2 and 3

	cycle	N	Mean
Allergy	Second cycle	150	.69
	Third cycle	174	.89
Drug	Second cycle	150	.88
	Third cycle	174	.83
Doses	Second cycle	150	.70
	Third cycle	174	.63
Social	Second cycle	150	.71
	Third cycle	174	.70
NBM	Second cycle	150	.74
	Third cycle	174	.75

Table 5: Statistical significance of the differences in Table 3

Cycle 2 to 3		Independent Samples Test									
		Allergy		Drug		Doses		Social		NBM	
		Equal variances assumed	Equal variances not assumed	Equal variances assumed	Equal variances not assumed	Equal variances assumed	Equal variances not assumed	Equal variances assumed	Equal variances not assumed	Equal variances assumed	Equal variances not assumed
t		-4.520	-4.401	1.324	1.338	1.394	1.400	.351	.352	-.146	-.146
df		322	258.187	322	322.000	322	319.100	322	316.493	322	314.103
t-test for	Sig. (2-tailed)	.000	.000	.187	.182	.164	.163	.725	.725	.884	.884
Equality of Means	Mean Difference	-.198	-.198	.052	.052	.074	.074	.018	.018	-.007	-.007
	Std. Error Difference	.044	.045	.040	.039	.053	.053	.051	.051	.049	.049
	95% Confidence Interval of the Difference	Lower	Upper	Lower	Upper	Lower	Upper	Lower	Upper	Lower	Upper
		-.285	-.287	-.025	-.025	-.030	-.030	-.082	-.082	-.103	-.103
		-.112	-.110	.130	.129	.177	.177	.118	.118	.089	.089