

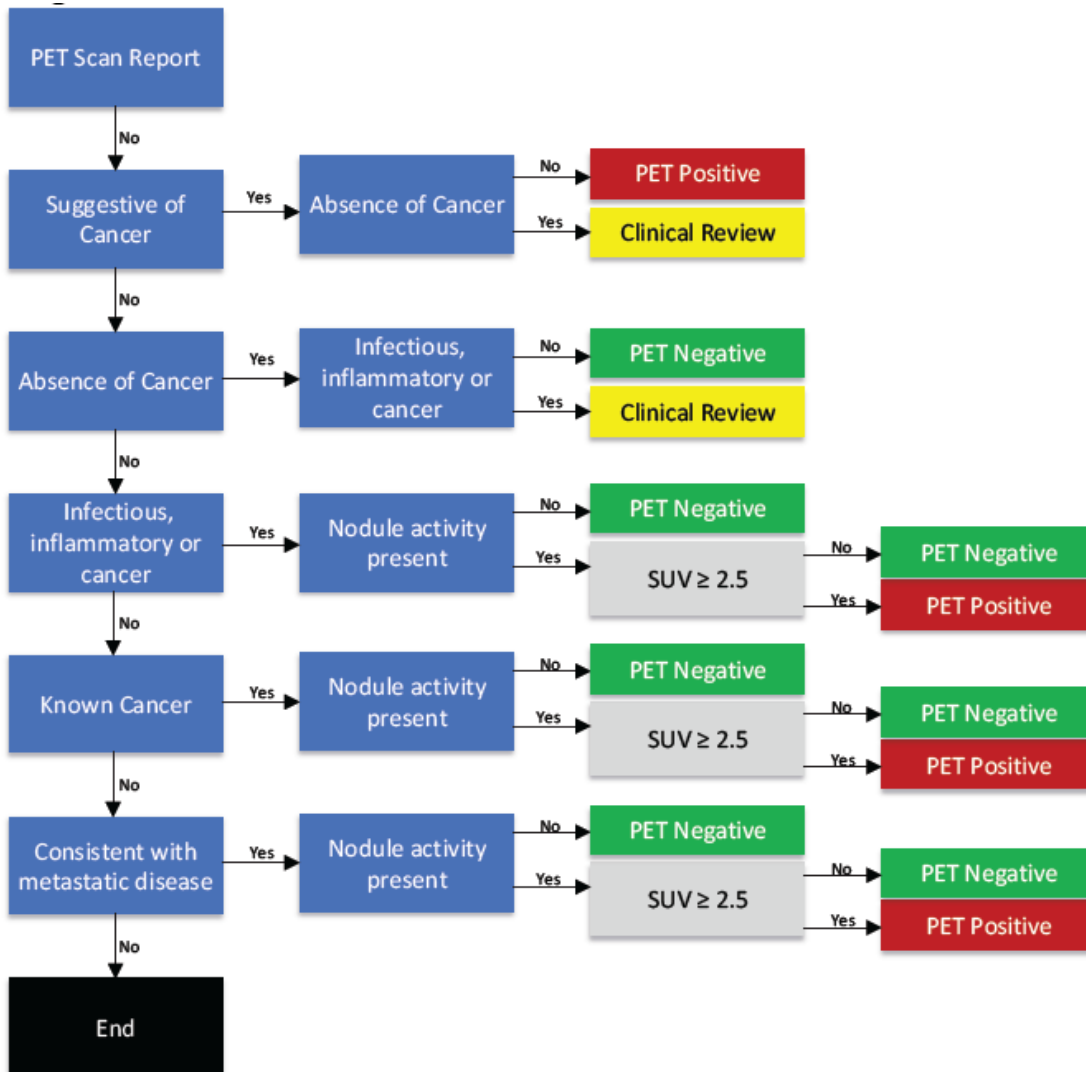
Management of Pulmonary Nodules by Community Pulmonologists

A Multicenter Observational Study

Nichole T. Tanner, MD, MSCR; Jyoti Aggarwal, MHS; Michael K. Gould, MD; Paul Kearney, PhD; Gregory Diette, MD, MHS; Anil Vachani, MD; Kenneth C. Fang, MD; and Gerard A. Silvestri, MD

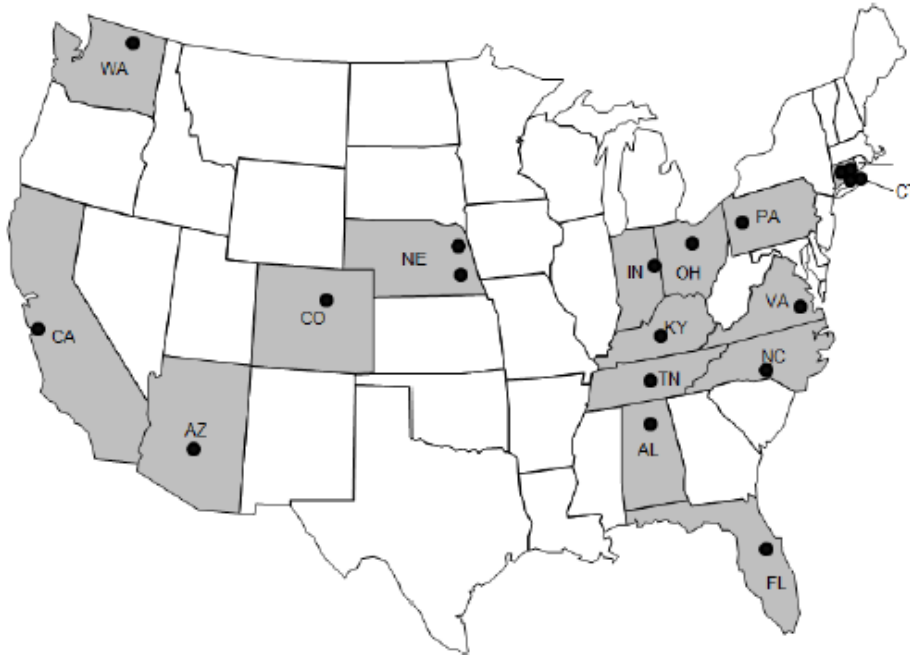
CHEST 2015; 148(6):1405–1414

e-Figure 1: PET Interpretation Algorithm

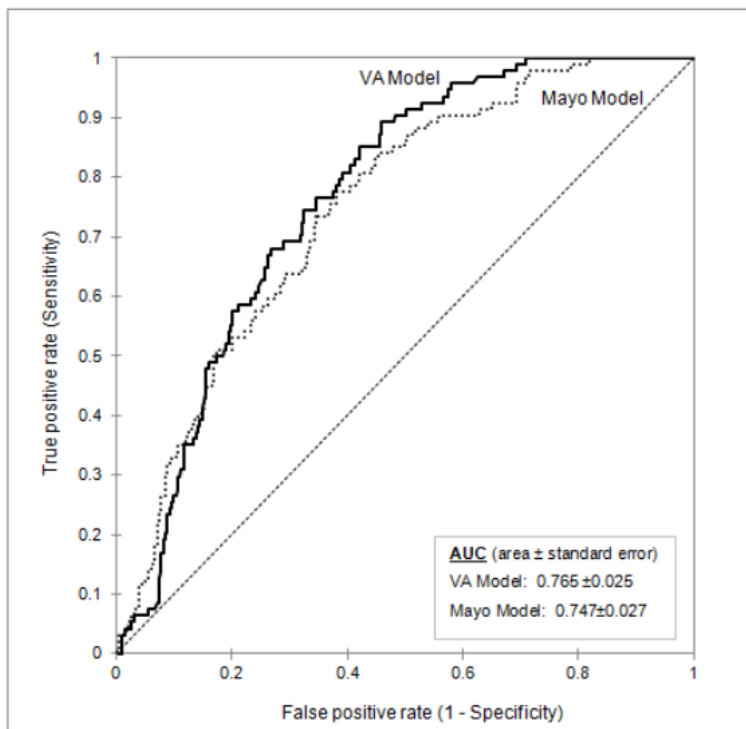


Online supplements are not copyedited prior to posting.

e-Figure 2: Geographic Distribution of Participating Pulmonary Clinics



e-Figure 3: Model Receiver Operating Characteristic Curve Accuracy



Online supplements are not copyedited prior to posting.

e-Table 1: Proportion of total screened patients excluded due to missing data by site

| Site # | Total Patients Screened | N (%) Charts Included | N (%) with Missing Data | N (%) with Insufficient Follow-up |
|--------|-------------------------|-----------------------|-------------------------|-----------------------------------|
| 1 | 90 | 42 (46.67%) | 0 (0%) | 0 (0%) |
| 2 | 16 | 2 (12.50%) | 10 (62.50%) | 8 (50.00%) |
| 3 | 163 | 6 (3.68%) | 7 (4.29%) | 7 (4.29%) |
| 4 | 35 | 4 (11.43%) | 5 (14.29%) | 2 (5.71%) |
| 5 | 179 | 33 (18.44%) | 27 (15.08%) | 25 (13.97%) |
| 6 | 47 | 10 (21.28%) | 12 (25.53%) | 12 (25.53%) |
| 7 | 137 | 58 (42.34%) | 13 (9.49%) | 13 (9.49%) |
| 8 | 338 | 60 (17.75%) | 74 (21.89%) | 10 (2.96%) |
| 9 | 40 | 19 (47.50%) | 10 (25.00%) | 9 (22.50%) |
| 10 | 75 | 11 (14.67%) | 16 (21.33%) | 7 (9.33%) |
| 11 | 151 | 12 (7.95%) | 18 (11.92%) | 18 (11.92%) |
| 12 | 260 | 39 (15.00%) | 46 (17.69%) | 44 (16.92%) |
| 13 | 64 | 17 (26.56%) | 7 (10.94%) | 6 (9.38%) |
| 14 | 382 | 27 (7.07%) | 53 (13.87%) | 53 (13.87%) |
| 15 | 47 | 7 (14.89%) | 4 (8.51%) | 0 (0%) |
| 16 | 116 | 15 (12.93%) | 9 (7.76%) | 8 (6.90%) |
| 17 | 20 | 8 (40.00%) | 4 (20.00%) | 4 (20.00%) |
| 18 | 419 | 7 (1.67%) | 109 (26.01%) | 77 (18.38%) |

e-Table 2: Proportion of total screened patients excluded due to missing data by region

| Region | Total Patients Screened | N (%) Charts Included | N (%) with Missing Data | N (%) with Insufficient Follow-up |
|-----------|-------------------------|-----------------------|-------------------------|-----------------------------------|
| Midwest | 693 | 118 (17.03%) | 140 (20.20%) | 65 (9.38%) |
| Northeast | 411 | 88 (21.41%) | 31 (7.54%) | 26 (6.33%) |
| South | 810 | 88 (10.86%) | 125 (15.43%) | 118 (14.57%) |
| West | 665 | 83 (12.48%) | 128 (19.25%) | 94 (14.14%) |

Online supplements are not copyedited prior to posting.

e-Table 3: Calculated Pre-Test Probability and Procedure Utilization (Mayo Model)

| | < 0.05 n=32 | 0.05 to < 0.65 n=316 | ≥ 0.65 n=29 | p-value |
|---------------------------------|----------------|-------------------------|----------------|---------|
| Mayo Model pCA | 0.03 ± 0.010 | 0.26 ± 0.161 | 0.76 ± 0.073 | |
| Outcome | | | | |
| Benign (n,%) | 32 , 100% | 235 , 74% | 16 , 55% | 0.0002 |
| Malignant (n,%) | 0 , 0% | 81 , 26% | 13 , 45% | 0.0002 |
| Age (mean ± SD) | 52.3 ± 8.04 | 64.8 ± 10.41 | 73.8 ± 8.32 | <0.0001 |
| Smoking Status | | | | |
| Ever (n,%) | 6 , 19% | 241 , 76% | 28 , 97% | <0.0001 |
| Never (n,%) | 26 , 81% | 75 , 24% | 1 , 3% | <0.0001 |
| Years Quit (mean ± SD) | 0.3 ± 1.94 | 9.5 ± 19.00 | 15.3 ± 21.38 | 0.0050 |
| Pack-Years | 6.2 ± 13.75 | 33.2 ± 31.36 | 45.1 ± 33.14 | <0.0001 |
| Nodule Size (mean ± SD) | 9.1 ± 1.66 | 12.8 ± 3.54 | 16.9 ± 3.60 | <0.0001 |
| History of Cancer (n,%) | 0 , 0% | 40 , 13% | 11 , 38% | <0.0001 |
| Spiculated (n,%) | 0 , 0% | 92 , 29% | 26 , 90% | <0.0001 |
| Upper Lobe (n,%) | 2 , 6% | 148 , 47% | 29 , 100% | <0.0001 |
| Procedure Utilization | | | | |
| Surgery (n,%) | 2 , 6% | 68 , 22% | 7 , 24% | 0.1089 |
| Biopsy (n,%) | 9 , 28% | 118 , 37% | 17 , 59% | 0.0369 |
| Surgery or Biopsy (n,%) | 11 , 34% | 170 , 54% | 21 , 72% | 0.0118 |
| PET (n,%) | 7 , 22% | 122 , 39% | 12 , 41% | 0.1582 |
| CT/X-Ray Only (n,%) | 17 , 53% | 109 , 34% | 7 , 24% | 0.0468 |
| Procedure Utilization Category* | | | | |
| Most Invasive = Surgery (n,%) | 2 , 6% | 68 , 22% | 7 , 24% | 0.1089 |
| Most Invasive = Biopsy (n,%) | 9 , 28% | 102 , 32% | 14 , 48% | 0.1767 |
| Surveillance (n,%) | 21 , 66% | 146 , 46% | 8 , 28% | 0.0118 |

Online supplements are not copyedited prior to posting.