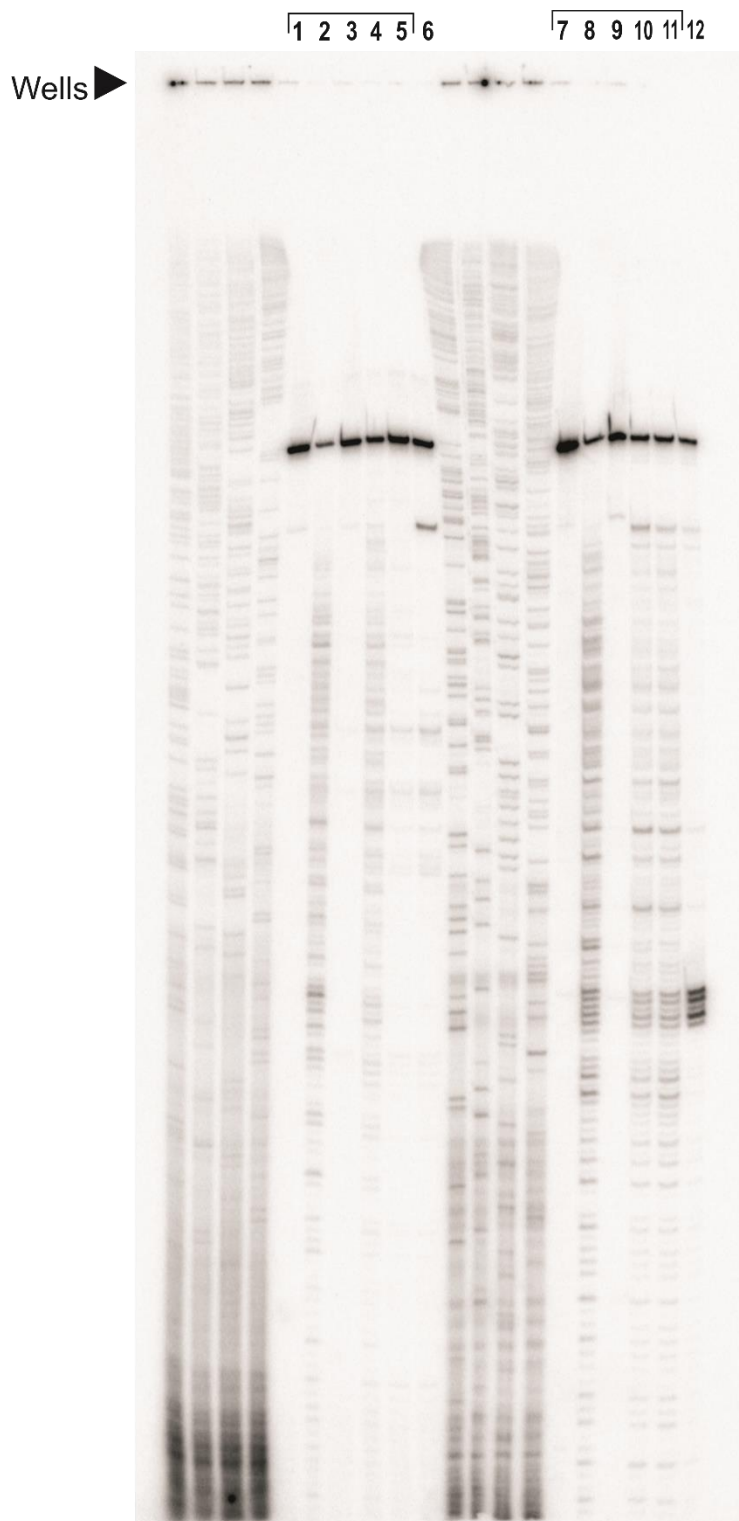


Supplementary Information to

**The nuclease domains of Type ISP restriction enzymes are indirectly activated
at-a-distance by strain produced by motor activity**

Kara van Aelst¹, Kayarat Saikrishnan² and Mark D. Szczelkun¹

¹DNA-Protein Interactions Unit, School of Biochemistry, University of Bristol, Bristol, BS8
1TD, UK, and ²Division of Biology, Indian Institute of Science Education and Research, Pune,
411008, India



Supplementary Figure S1. Complete denaturing polyacrylamide gels used in Figure 5. Lanes 1-5 were deleted from the image for clarity. Lanes 6 (“bottom” strand) and 12 (“top” strand) are the samples lanes shown.