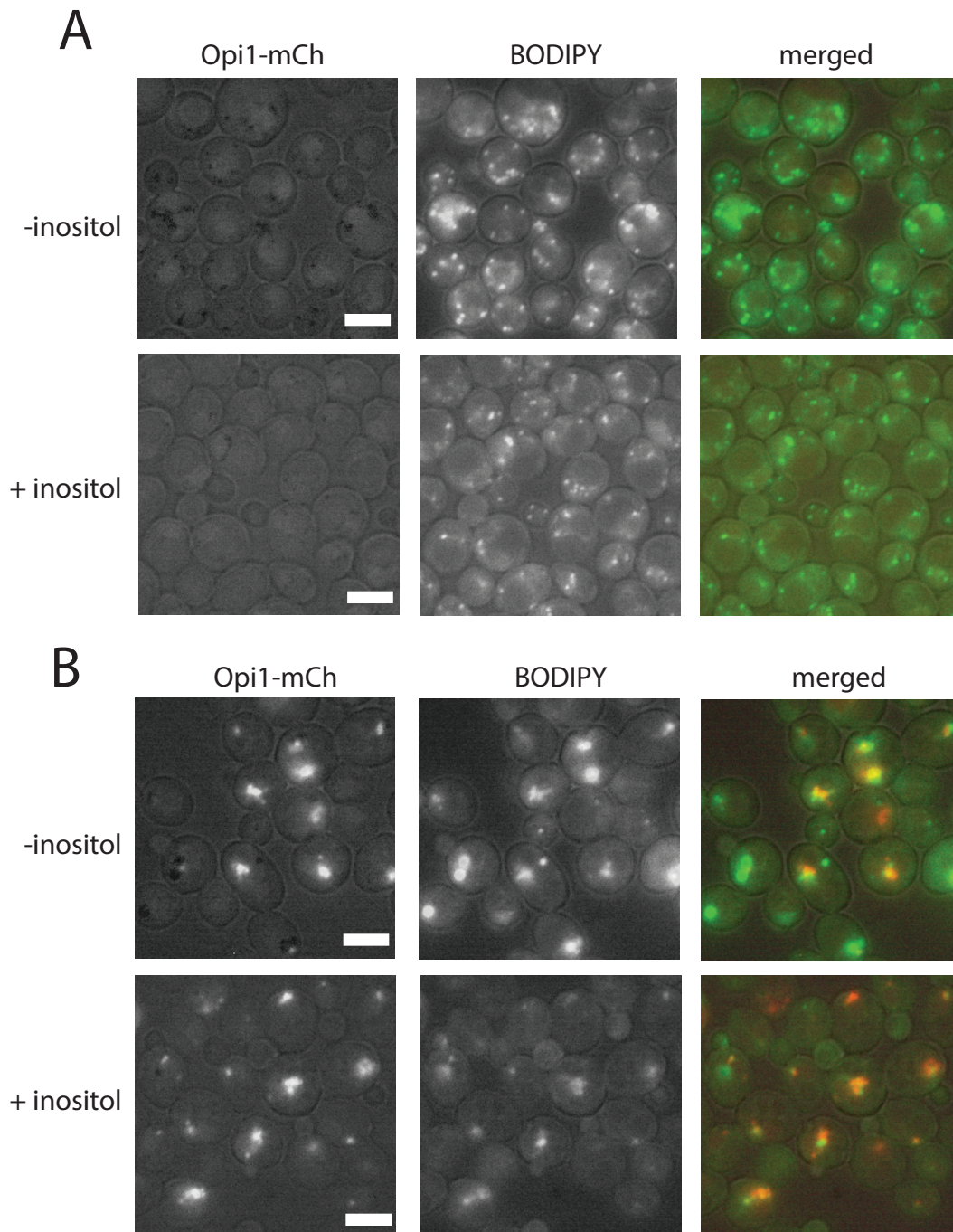


**Supplemental Figure S1. Scs2p-GFP can form strong puncta in *sei1*Δ cells.** Shown are GFP fluorescence images in log or stationary phase cells. Scale bar, 5 μm.



**Supplemental Figure S2. Suppressing supersized droplets with inositol does not inhibit PA puncta formation.** (A) WT or (B) *sei1* $\Delta$  cells (both expressing Opi1-mCherry) were grown in SCD  $\pm$  75  $\mu$ M inositol for 6 h. The added inositol suppressed supersized droplets in *sei1* $\Delta$  but not PA puncta. Scale bars, 5  $\mu$ m.