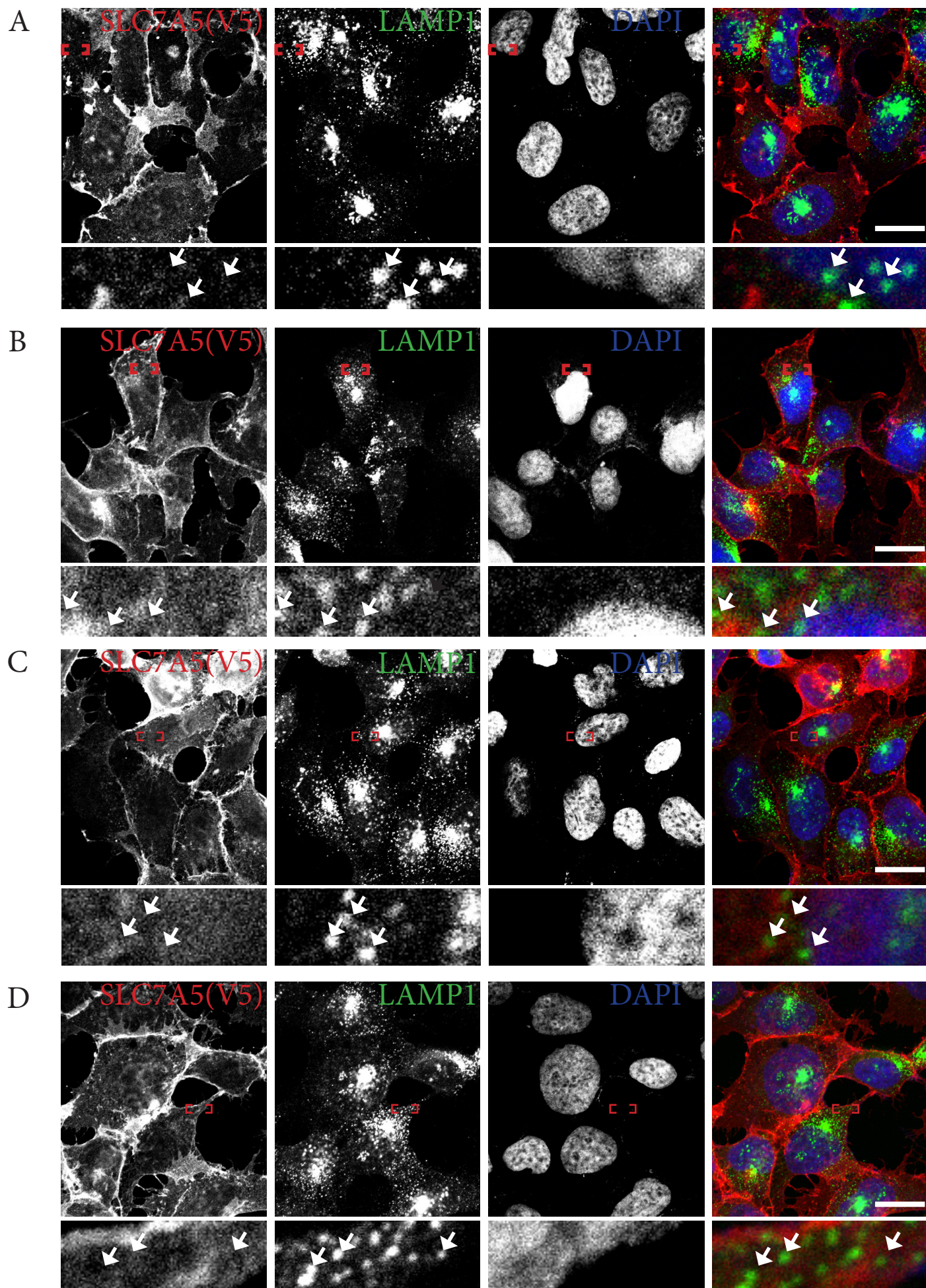


Sup figure 2



Supplementary information, Figure S2 SLC7A5 is predominantly localized to the plasma membrane. Representative images of 293A cells expressing V5 tagged SLC7A5. In **A-D**, red insert depicts region that are enlarged. Arrow heads depict LAMP1 positive lysosomal regions devoid of V5 signal. Scale bars are 10 μ m. **(A)** Cells were AA starved for 6 h, fixed and labeled for the lysosomal marker LAMP1 and V5 for epitope tagged SLC7A5. **(B)** Cells were changed into fresh full medium with amino acids and 10% dialysed FBS and processed as in **A**. **(C)** Cells were AA starved followed by Gln stimulation for 30 min and processed as in **A**. **(D)** Cells were AA starved followed by Gln prestimulation for 30 min followed by .1 \times Leu stimulation and processed as in **A**.